

Integration

INTEGRATION...



...unlocks inspiration.

SECOA[®]

Theatre Equipment | Systems | Integration

SECOA MAKES IDEAS REALITY



MacPhail Center for Music, Minneapolis, MN

We're experts in creating performing arts spaces.

A national integrator of theatre equipment and systems with nearly a century of experience, SECOA both manufactures components and provides services ranging from budgeting and engineering to project management and installation.

Our equipment lines include rigging, orchestra shells, pits and lifts, drapery, lighting and seating—all engineered and installed to work together seamlessly. As integrators, rather than dealers or just suppliers, our expertise goes beyond the parts and pieces. We understand the entire performing arts space and how the myriad of specialized components and systems, including those of other trades, are interconnected.

Proper integration of theatre equipment presents another challenge. These systems are installed during the final time-constrained phases of construction, when budgets, deadlines and physics can conspire to rein in the original vision for the project. Unintended and unwanted compromises can result.

While SECOA can step into the process at any time, our value to you is greatest at the outset. In the early phases of planning and design, we can spot and maneuver through the plot twists—minimizing project risk and keeping the inspiration intact.

We've seen it all. We've done it all. We know our lines. So let's raise the curtain. The clock is ticking.

SECOA MAKES THE SYSTEMS THAT MAKE THE MAGIC.

SECOA is the comprehensive solution.



- Our estimates, built by costing and design experts who understand the entire project, are more reliable.
- Our in-house manufacturing allows us to manage schedules with flexibility.
- Our quality control program includes a field audit department that monitors onsite activities and keeps coordination and communication lines fluid.
- Our national market reach allows us to mobilize resources more efficiently.
- Our technical theatre expertise coupled with our construction know-how allow us to cover a larger scope of work.

An integrated approach means two things. On the front end, risk is reduced. On the back end, budgets and schedules are preserved.



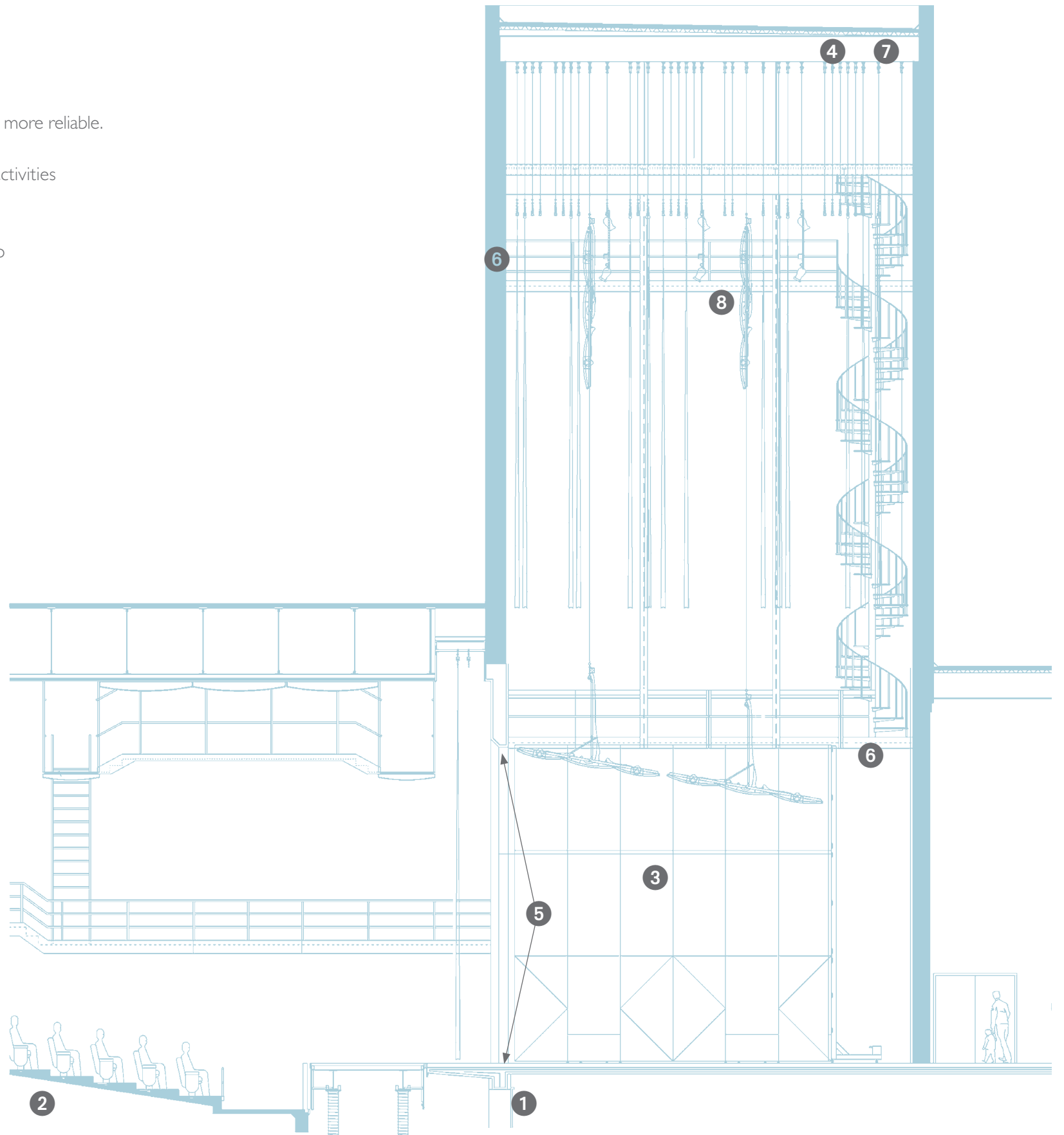
SECOA excels in workflow management to keep you on schedule.

Our standard workflow process includes specialized preconstruction and coordination meetings. Our vertically integrated manufacturing coupled with advanced scheduling tools give us the ability to shift production, shipping and installation dates to meet your timetable.

Unlike our competitors, we always have options.

“Secoa’s engineering ability and ingenuity were key... Their ability to think outside the box along with incorporating their broad theatre equipment knowledge base were paramount to the completion of such a difficult project...”

Matt McMullan, Assistant Superintendent
McCarthy Building Companies, Inc.



Innovative problem solving from the foundation up.



At all stages of a project, new constraints can arise and budgets can change. SECOA brings expertise to the entire design/build process. The sooner we take the stage, the sooner we can navigate common pitfalls.

- 1 Foundation**
SECOA confers with the concrete and electrical contractors on the critical placement of equipment for lifts and back boxes. Hot topics include installation of guide chases, wire size and type and conduit requirements.
- 2 Seating Risers**
Working closely with the concrete, electrical, HVAC and Miscellaneous Metals subcontractors, SECOA specifies locations for a multitude of components.
- 3 T-Wall for Linesets**
By coordinating with trades, reviewing submittals and conducting field checks at the right time, SECOA ensures that this critical wall remains entirely free of sprinklers, HVAC, structural steel and wiring.
- 4 Automated Rigging**
Special attention must be paid to the location of and supporting infrastructure for these suspended machines. Access loading requirements, conduit size, runs and locations, and control panel location require experienced evaluation.
- 5 Back Wall of the Proscenium-Firewall**
Prior to construction, SECOA will help determine imbeds and blocking or backing to properly accommodate the firewall.
- 6 Catwalks and Loading Bridges**
For safety reasons, these areas must be located to align precisely to the arbor. By conducting preconstruction and coordination meetings, SECOA helps guarantee a proper match.
- 7 Structural Steel Beams-Headblocks and Loftblocks**
SECOA prevents obstructions in grid channels often created by other subs by reviewing the drawings early in the process.
- 8 Lighting and Dimming**
During its scope review, SECOA will help clarify troublesome gray areas in the bidding documents.

SECOA keeps budget risk under control.

The sooner SECOA gets involved, the more money we can save. Our integrated estimating, engineering and project management competencies help us tailor best-fit systems as well as foresee costly obstructions or other incompatibilities.

Change can be difficult. But in the right hands, change provides opportunity.



At SECOA, we know that the better we understand your needs, the better partner we will be.

Give us a call. Fill us in on the projects in your pursuit and we will schedule a meeting geared to that portfolio. If performing arts spaces are a new area of interest, consider our offer to present an overview of theatre systems integration at your offices. Our experts will deliver a tutorial that will get you started on the right foot.

When time is running short, include SECOA on your invitation to bid list. We will harness our resources to provide an integrated bid package that gives you the best value with the least amount of risk.

Call 800.328.5519 or visit www.secoa.com



STAGE DRAPERY

Stage drapes always have played an important role in the theatre, from scene-setting to stage masking. The latest designs also feature acoustic properties to help control sound in the audience chamber, helping you sustain the magic from opening act through final curtain.



ORCHESTRA LIFT

Make all the world a stage. Whether you want to add seats for a sold-out show or bring the actors into the audience, pit lifts give you unmatched versatility—at the flip of a switch—no crew required.



RIGGING

The heart of the performance space, rigging brings order to backstage chaos. Scenery, lighting and curtains fly in or out of view in an instant. Options include brilliantly engineered manual rigging or sophisticated automated systems for uncompromising accuracy and safety.



LIGHTING

Lights down; the players take the stage. Theatre lighting today is a synchronized performance in and of itself. Multi-faceted systems integrate stage lighting, house lights and special effects from a single position—enhancing the drama at every turn.



ORCHESTRA SHELL

Sound is integral to a rich theatrical experience. Our acoustic shell systems utilize custom geometry to enhance and optimize virtually any performance, from Oklahoma! to a poetry slam to Beethoven's Ninth.



SEATING

Take your seats, please. From fixed to temporary seating, our solutions allow conversions of a rehearsal space into a black box or a proscenium stage into an intimate performance space. We'll make sure your audience is ready to be dazzled.



PIT FILLERS

Stage a lecture in the morning and Fiddler on the Roof the same evening. A pit filler is strong enough to walk, dance and jump on, while bringing the front row face to face with the performers. Later, stagehands will appreciate just how easy it is to disassemble and stow away.

Ideas made real: Recent projects.

From high schools to high-profile concert halls, we know how to make performing arts spaces that captivate.

Aladdin Hotel - Planet Hollywood • Las Vegas, NV
Air Force Academy • Colorado Springs, CO
Alma High School • Alma, AR
Auditorium Theatre • Chicago, IL
Aycock Auditorium - UNC • Greensboro, NC
Bayfront Center Auditorium • St. Petersburg, FL
Baltimore Hippodrome • Baltimore, MD
Ben Davis High School • Indianapolis, IN
Bob Carr Performing Arts Center • Orlando, FL
Boston Opera • Boston, MA
Boynton Beach High School • Boynton Beach, FL
Brigham Young University - Dejong Hall • Provo, UT
Burt Reynolds Dinner Theatre • Jupiter, FL
Caesar's Palace • Las Vegas, NV
California State University Performing Arts Center • Northridge, CA
Cervantes National Theatre • Buenos Aires, Argentina
Children's Theatre Company • Minneapolis, MN
Chicago Music & Dance Theatre • Chicago, IL
Circus Circus Casino • Las Vegas, NV
College Conservatory of Music • Cincinnati, OH
Condado Convention Center Complex • San Juan, Puerto Rico
Cooperative Arts & Humanities High School • New Haven, CT
Comerstone Arts Center - Colorado College • Colorado Springs, CO
Curran Theatre • San Francisco, CA
Decatur Central High School • Indianapolis, IN
Dee and Charles Wyly Theatre • Dallas, TX
DeKalb County Performing Arts & Community Center • Decatur, GA
Denver Center for the Arts • Denver, CO
Disneyland Animation/ABC Live • Anaheim, CA
Disneyland Hyperion Theatre • Anaheim, CA
Dodge City High School Facility • Dodge City, KS
Donald Reynolds Performance Hall • Conway, AR
Duke University - Baldwin Auditorium • Durham, NC
Duluth Superior Symphony Hall • Duluth, MN
Emerson College - Paramount Center • Boston, MA
Ferguson Center - Christopher Newport University • Newport News, VA
Epic Auditorium • Verona, WI
Fair Park Music Hall • Dallas, TX
Guthrie Theater • Minneapolis, MN
Hard Rock Cafe/Live • Orlando, FL
Harvard Westlake Middle School • Los Angeles, CA
ICC Performing Arts Center • Spindale, NC
Jackson Hole Center for the Arts • Jackson, WY
Juilliard School of Music • New York, NY
Lincoln NE & SE High School • Lincoln, NE
Margot and Jim Winspear Opera House • Dallas, TX
Millennium Park Pavilion • Chicago, IL
Minneapolis Convention Center • Minneapolis, MN
Morris Performing Arts Center • South Bend, IN
Napa College Performing Arts Center • Napa, CA
Navy Pier Entertainment Facility • Chicago, IL
North Charleston Convention Center • N. Charleston, SC
North Port High School • North Port, FL
Northwestern University Speech and Block Building • Evanston, IL
Opryland USA • Nashville, TN
Ordway Center for the Performing Arts • St. Paul, MN
Orpheum Theatre • Minneapolis, MN
Oriental Theatre • Chicago, IL
Overture Center • Madison, WI
Palace Theatre • Chicago, IL
Papermill Playhouse • Millburn, NJ
Peoria Center for the Performing Arts • Peoria, AZ
Peoria Civic Center • Peoria, IL
Plainfield High School • Plainfield, IN
Plaza Theatre and Performing Arts Center • El Paso, TX
Purdue University - Fowler Hall • West Lafayette, IN
River Campus - SE Missouri State University • Cape Girardeau, MO
Schuster Performing Arts Center • Portsmouth, OH
Seton Hill University Center for the Arts • Greensburg, PA
Shawnee State University • Portsmouth, OH
Sheboygan Theatre • Sheboygan, WI
Sir Run Run Shaw Chinese University • Hong Kong
South Florida Community College Auditorium • Avon Park, FL
Symphony Center • Chicago, IL
Times Union Performing Arts Center • Jacksonville, FL
Turning Stone Casino Resort • Verona, NY
U.S.S.R. Embassy • Washington, DC
University of Hawaii - John F. Kennedy Theatre • Honolulu, HI
Van Wezel Performing Arts Center • Sarasota, FL
Venetian Casino Resort - Jersey Boys Theatre • Las Vegas, NV
Venetian Casino Resort - Phantom Theater • Las Vegas, NV
Virginia Beach Arts and Conference Center • Virginia Beach, VA
WK Kellogg Auditorium • Battle Creek, MI