

JAMIESON
FENCE SUPPLY

800.527.6464



XLG SERIES 8600 LARGE OPENING SWING GATES

Jamieson's XLG Series 8600 gates are custom manufactured swing gates for large openings. These gates are suited for industrial, commercial, governmental or other security sensitive applications. All gates are fully welded under factory controlled conditions, ship ready for immediate installation and include all hardware for manual operation. Where gate size exceeds shipping limits, it is shipped in sections with splice provisions and hardware for simple re-assembly at the job site.



XLG GATE SERIES	MAJOR FRAME SIZE	MAX SINGLE DRIVE GATE OPENING	MAX DOUBLE DRIVE GATE OPENING
Series 8630	3" square frame, 2" x 3" internal vertical members	30'	60'
Series 8650	2" x 5" frame, 4 1/2" x 3" I-Beam vertical members	60'	120'

BUILT TO LAST

Series 8600 gate frame materials are made from durable structural aluminum and fabricated by AWS certified welders and welding procedures. Each gate is custom fabricated to Jamieson's exacting standards and braced with solid gusset plates to maintain squareness and rigidity. Stainless steel aircraft truss cable assemblies with adjustable turnbuckles are installed throughout the entire gate length to provide both significant and fine tuning adjustments. Hinge vertical members are from heavy wall tubing, predrilled and sleeved for the mating hinge. In chain link applications, both end vertical members are reinforced with horizontal bracing and an additional vertical support member for greater chain link tension. Internal primary and intermediate vertical members are sized to the application to provide superior stability and sway resistance.

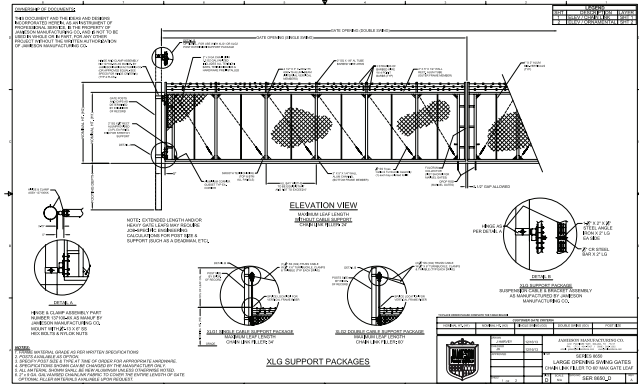
HINGES AND THE XLG SUPPORT PACKAGE

Jamieson has a full line of hinge assemblies for Series 8600 gates that range up to a 3,000 lb. capacity per hinge. Our engineering team is very experienced at adapting or creating new designs for unique applications. We look forward to providing the solution to your challenge. The Series 8600 XLG Support Package is used to support and control gate elevation. This package consists of an upper truss cable assembly (either one or two depending on panel length), a hinge-end vertical member extension, an extended gate post, brackets and an upper hinge. Using the XLG Package extends the vertical hinge member to add an additional hinge above the gate. Opposite this hinge is a mounting bracket that swings with the gate and has a stainless steel aircraft truss cable attached. This cable extends approximately 2/3 of the gate length, which is then attached to a turnbuckle and bracket welded to the top horizontal member. The turnbuckle can then adjust the gate to the correct elevation.

NOTE TO ARCHITECTS AND ENGINEERS

Post and footing sizes and specifications are functions of state and local specifications and regulations, soil conditions, wind load, size and weight of the gate, wind blockage of the infill and potentially other job-specific conditions. As such, Jamieson does not provide these details generically. Actual design and specifications must be determined specifically for the project by Jamieson, the Architect, Engineer of Record or other technically capable resources.

Submittal drawings provided by Jamieson. Job Specific drawings available on request.



ORNAMENTAL DESIGNS

Whether you require security, aesthetics or both, our engineering team and custom fabrication shop stands ready to provide design support, develop 3-part specs and manufacture the gate to meet your requirements.

SAFETY FIRST

Jamieson follows the standards developed by Underwriter's Laboratory (UL 325) and ASTM F2200 as developed by ASTM International for all Series 8600 gates, regardless of manual or automated applications.

WARRANTY

Jamieson provides a limited 3-year limited warranty on Series 8600 swing gates.

TECHNICAL SERVICES



JAMIESON FENCE SUPPLY
TECHNICAL SALES DEPARTMENT
PHONE: 888-286-3362
FAX: 281-879-5558
WWW.JAMIESONFENCE.COM