



[GLASS AND GLASS]

INNOVATIVE
ARCHITECTURAL
GLASS
AND
DESIGN



[WELCOME]

Welcome to Glass and Glass.

We design, engineer and fabricate a large high quality variety of Glass and Stainless Steel Products.

With our unique Flextech Frameless Brackets you can go from Straight to Curved glass without any additional support. They can be used for glass railings, glass furniture – including displays for the wine, jewelry, and any other industry - and it is flexible enough to be used as an attachment for architectural glass products that are straight and/or curved, and need a frameless floating look, while challenging even the tightest radius. All our Railing Systems are suitable for Commercial and Residential use for Exterior and Interior conditions, and are engineered and tested complying with FBC requirements.

Through learning and applying the newest and best technology on glass and stainless steel fabrication, Glass and Glass has always been a market leader in developing new and innovative products, offering traditional, modern and contemporary styles.

Glass and Glass' focus is in manufacturing in USA with the European style and design, while following and exceeding the strictest building codes.

[CONTENT]

| | |
|---|-----|
| OUR HISTORY | 5 |
| FLEXTECH FRAMELESS GLASS RAILING | 7 |
| FLEXTECH INTERIOR BASE SHOE SYSTEM | 43 |
| FLEXTECH INTERIOR FREE STANDING BASE SHOE SYSTEM | 49 |
| FLEXTECH POST 4 HEADS AND "FIN" POST 3 HEADS SYSTEM | 55 |
| MECANO RAILING SYSTEM | 63 |
| FLEXTECH EXTERIOR BASE SHOE SYSTEMS | 65 |
| THE GLASS COLLECTION | 69 |
| ARCHITECTURAL GLASS | 89 |
| INTERIOR GLASS DOORS | 117 |
| GLASS FURNITURE | 149 |
| OUR CLIENTS | 161 |



[OUR HISTORY]

Glass and Glass is synonymous of style, which quality creates a feeling of sophistication, not only in terms of design, but also regarding materials and production techniques.

Our vision is to revive and renew residential and commercial properties globally, by committing ourselves to properly manufacture safe and unique glass and stainless steel products.

Since the beginning, we have always been listening to our customer's needs. In their homes as well as in their place of work - colors, textures, glass and stainless steel have been throughout our history, our best partners.

Glass and Glass' founder, Rolando Serra, started working with glass back in 1984, when he combined his engineer and architect background together with his inherited passion for glass. After several years of training in Europe and by learning all the different techniques from the Old School of Austria, He applied that knowledge in developing new glass products with the help of the latest technology and machinery, as well as creating unique hardware to support glass safely.

From laminating glass with resin since 1985 manufacturing custom made architectural glass, to inventing a patent pending Flextech Hardware to be used as a glass support system, and now to designing and engineering a fully automatic hydraulic lift glass window, Glass and Glass give the architects and designers wings to fly with their imagination, knowing that they are backed up by our engineering knowledge to transform their vision into a reality.

It is Glass and Glass commitment to ensure that the quality of life for generations to come is improved. We are conscience of the importance of conserving and recycling our Earth's resources. That is why our commitment with creating a green environment is pushing us to utilize in our factory all our waste material to create products and new samples for different uses, making our products environmental friendly, like our patent pending 100% recycled Geoglass, which has been developed with these principles in mind.

For our future, we are taking responsibility from what we have learned on the past, use what works on all our glass and systems, and combines our products and technology to guarantee that they have a long lasting safe and secure life span.

Glass and Glass would like to thank its customers. You are the motivation and reason for our success throughout the years.



[FLEXTECH FRAMELESS
GLASS RAILING SYSTEM]



[PRIVATE RESIDENCE]

FLEXTECH FRAMELESS GLASS RAILING

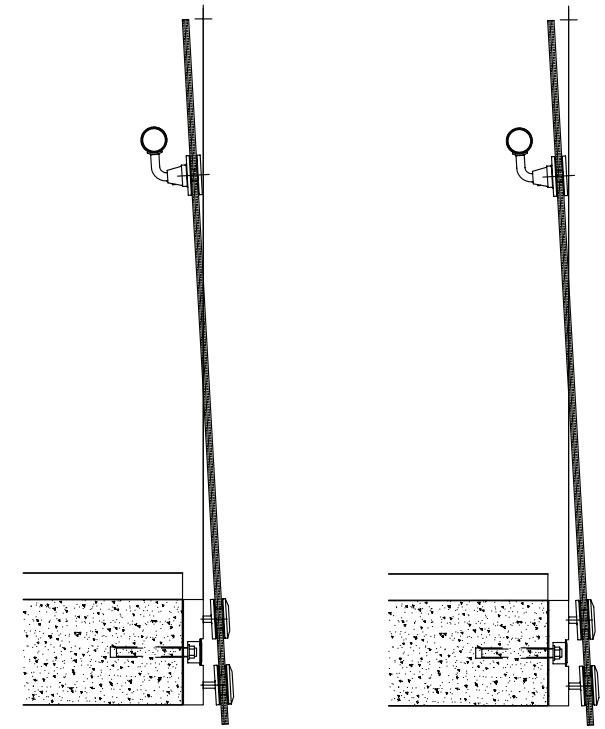
The Flextech Frameless Bracket System connects PH area to Terrace. These stairs are made out of concrete, and concrete was formed prior to do shop drawings. The brackets used are 10", made out of 316 marine grade brushed stainless steel, applied with 1/2" fully tempered clear glass, and all exposed edges are high polished. Our pat pend brackets hold up to 1" glass thickness. The architect used 1" black granite to cover entire face of the stringer, and also used same stone to cover steps.

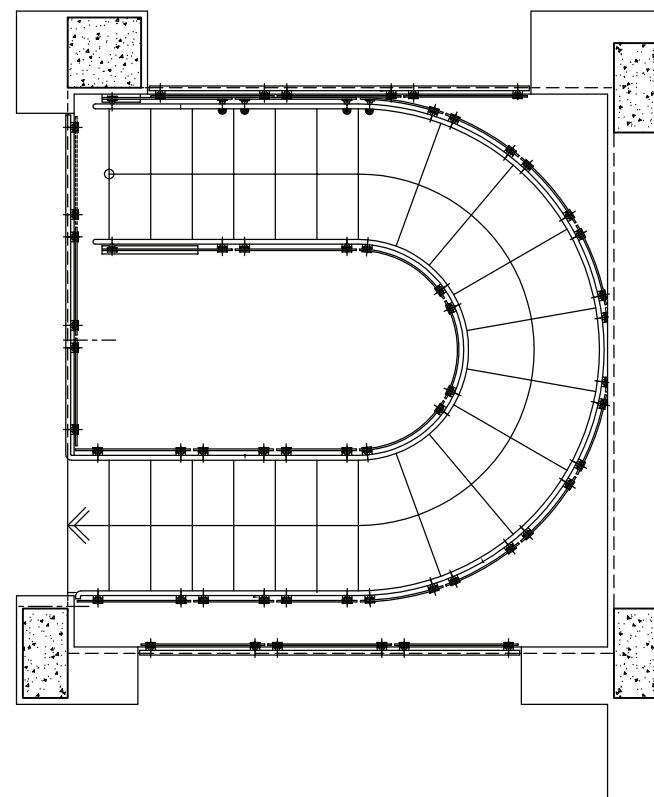
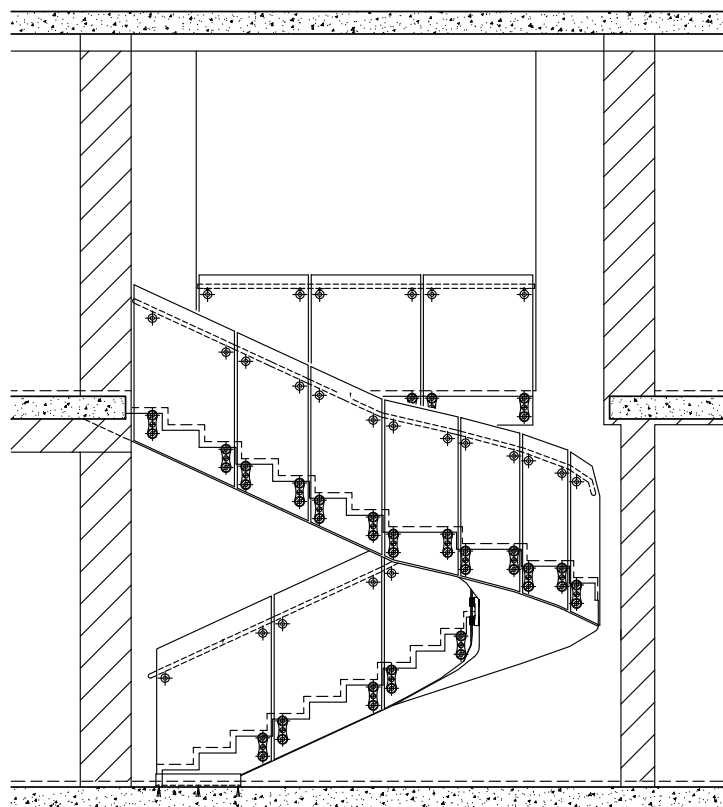
The radius of this main stairs was extremely tight [3 feet]. They used the brackets and our Flextech Head brackets work perfectly because of the ability of the need to fit into a very tight radius, something that can only be accomplished by Glass and Glass pat pend Flextech Frameless System.

Glass and Glass Flextech System is flexible enough to be adapted to a glass that has an allowance inward or outward up to 2 1/4" for alignment purposes with extreme damaged conditions in any jobsite.

We provide shop drawings for permit purposes, as well as design, engineer and installation to give architect, general contractor and owner more time to take care of other important construction tasks.

The Flextech System meets FBC requirements.







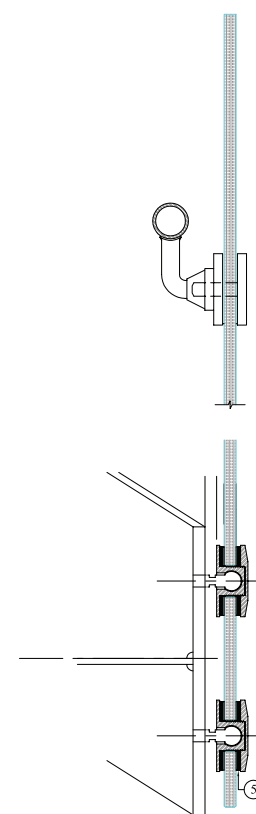
[PRIVATE RESIDENCE]

COMPLETE SPIRAL STAIRS

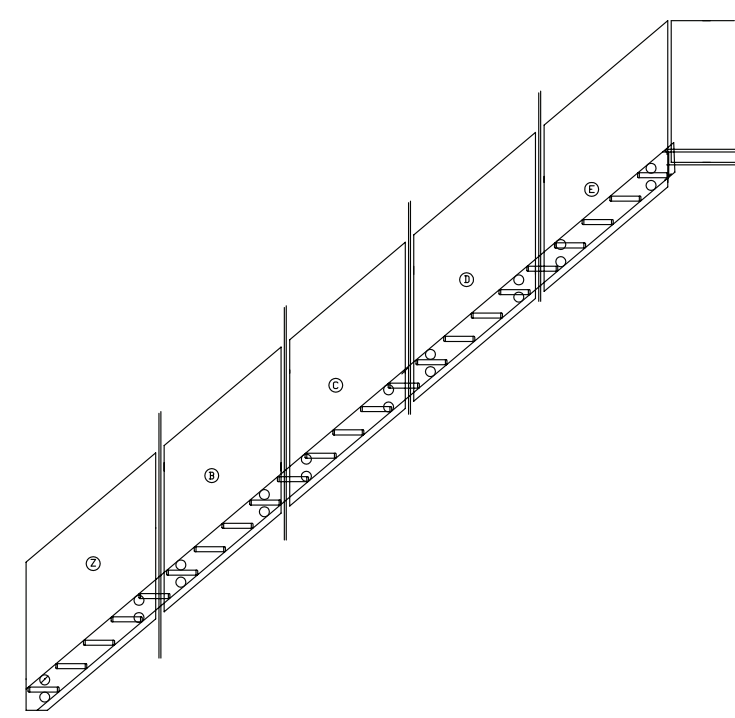
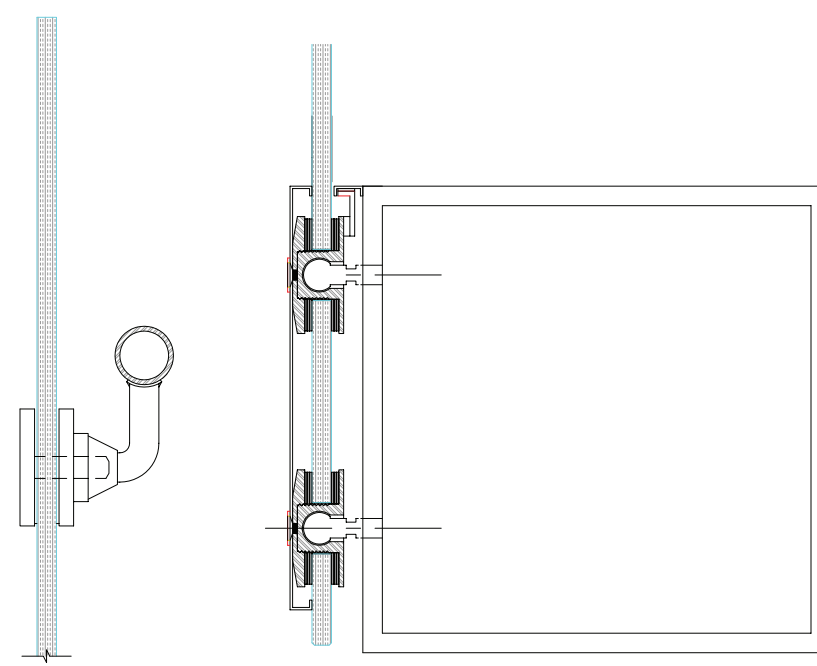
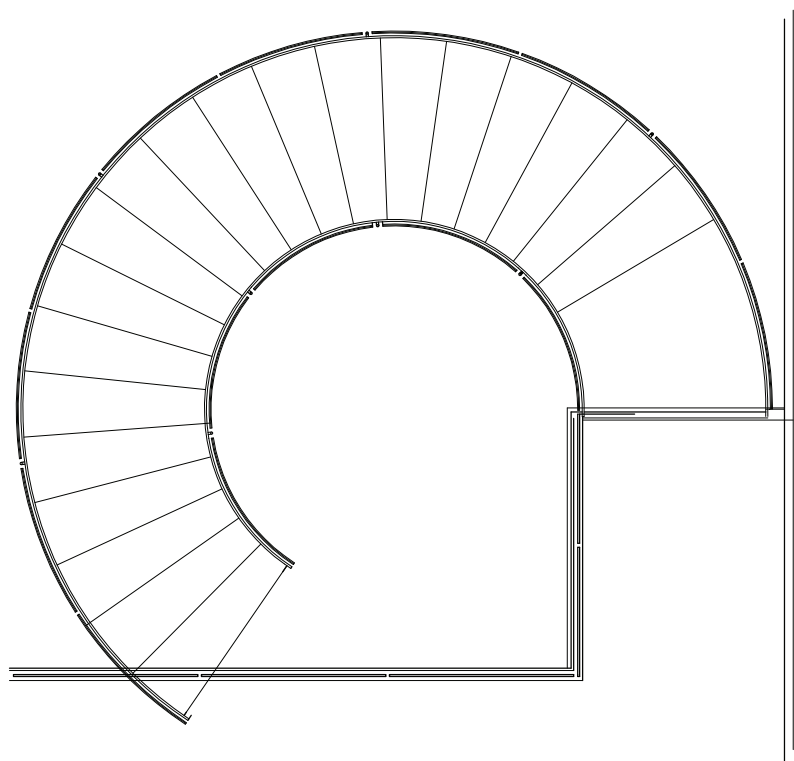
Glass and Glass pat pend Flextech head Brackets are the only one in the market that work perfect with curved conditions. Stair is Approxs 18 feet in diameter, about 98" to the bottom of the slab, and about 120" to the top of the slab. The stair is supported by cables, and we attached our flextech head brackets directly to a stainless steel stringer which we twisted to create a spiral. The painting on the metal was dry powder coating silver finish. Side mounted handrail was powder coated as well. Glass thickness 1/2" fully tempered, extra-clear. All exposed edges are high polished, hand buffed for extra clear finish on the edges.

GLASS FLOOR

Made with 2"thick extra-clear glass, all our glass floors are made with our proprietary systems.



[HEAD FOR HELL STRINGER BRACKET





[PRIVATE RESIDENCE]

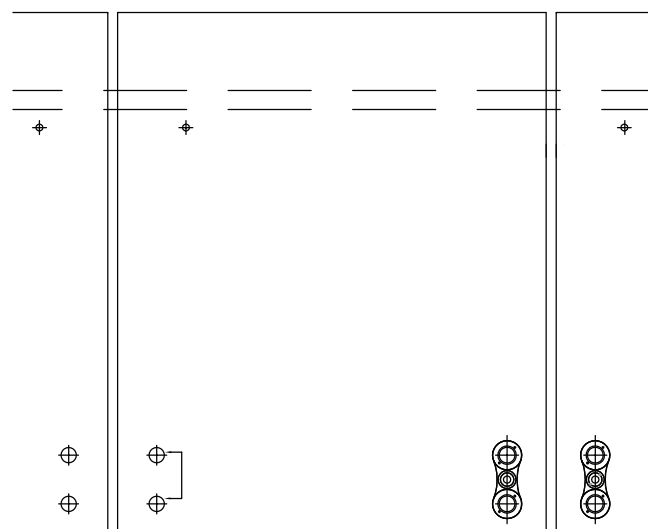
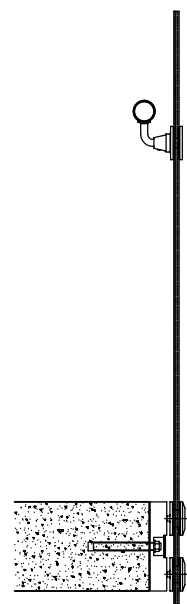
FLEXTECH GLASS RAILING SYSTEM

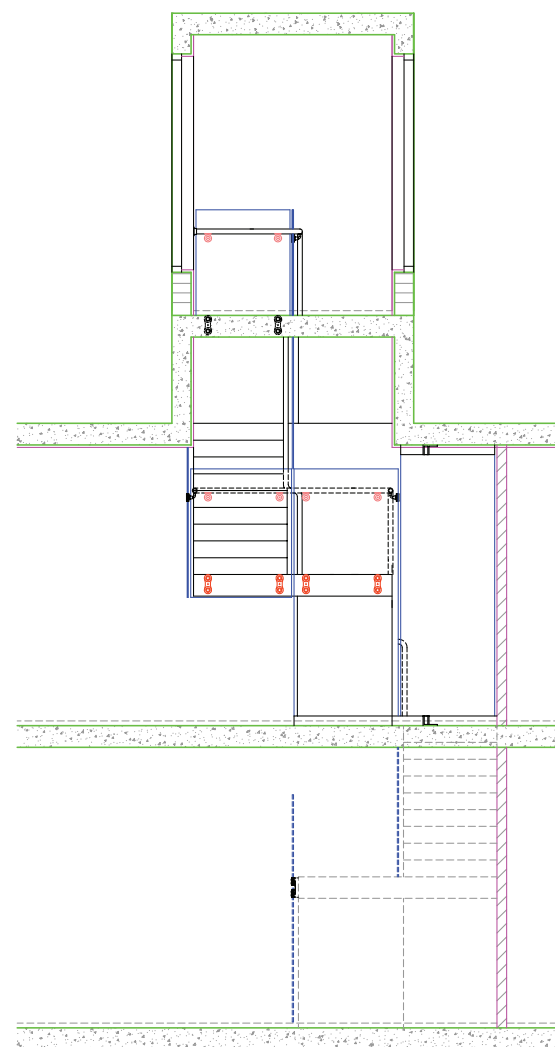
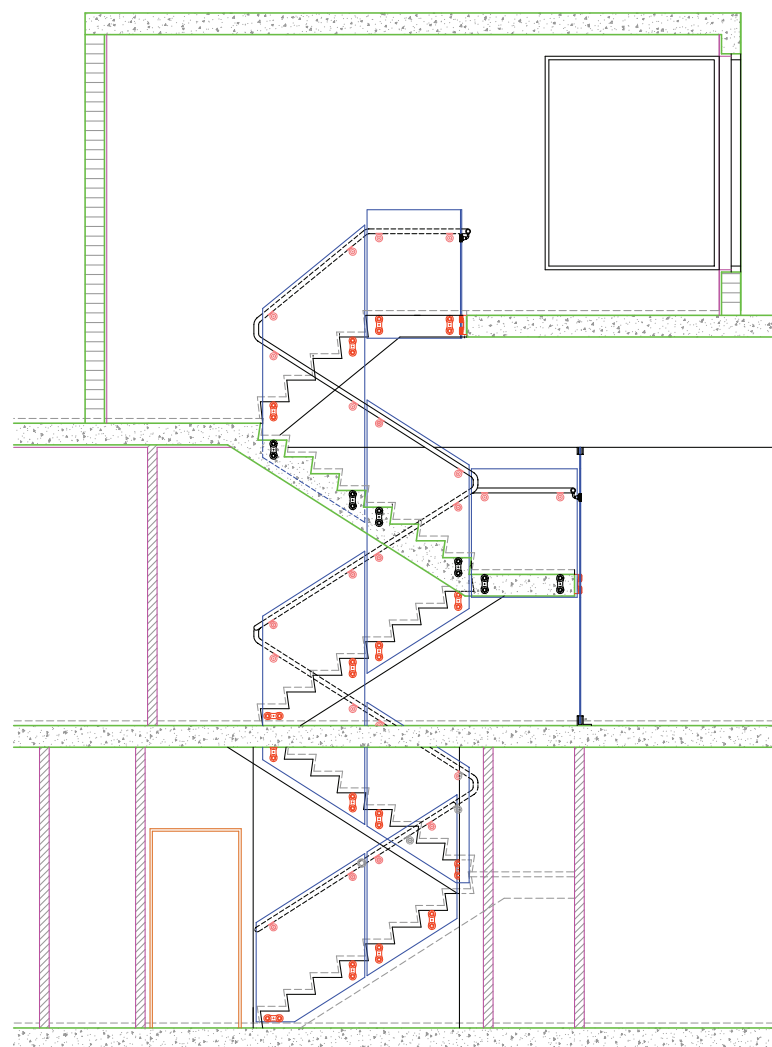
Glass and Glass Flextech Frameless Bracket System is attached to concrete with no additional support needed. The Frameless Glass railing using only the Flextech brackets going from the first floor to the third floor. Flextech System can be used for Residential and Commercial applications, in interior and exterior conditions, and is in NOA process, you can also use any of our Systems and we can apply our one time product control approval at the customer jobsite.

GLASS PARTITION ATTACHED TO GLASS RAILING USING FLEXTECH BRACKETS

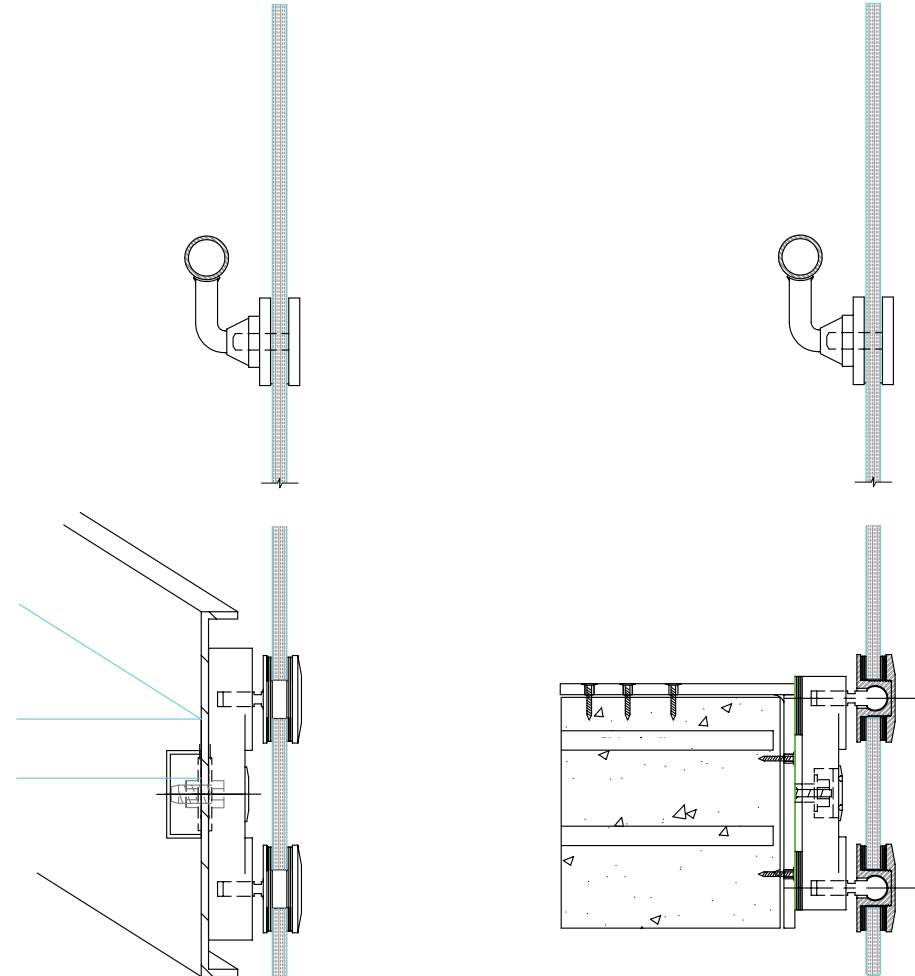
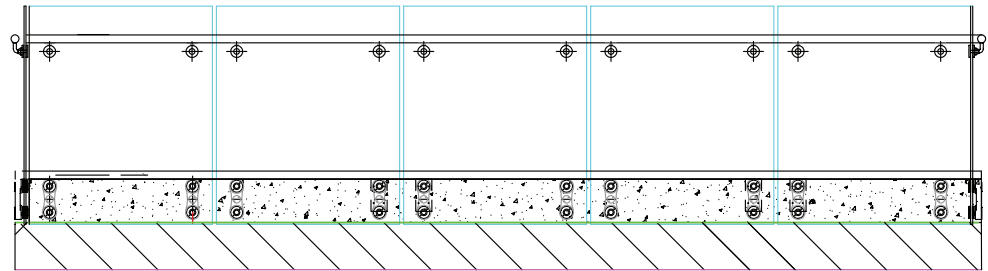
Glass partition made using our Flextech System and that is attached to glass railing with our pat pend Flextech Brackets, bringing the glass from top stairs to bottom of the floor, creating an architectural visual partition that provides privacy to the dining room area. Any of our hundreds of textrued designs can be applied onto the glass to create pieces of functional artwork.













[MODEL UNIT FOR PRIVATE RESIDENCE]

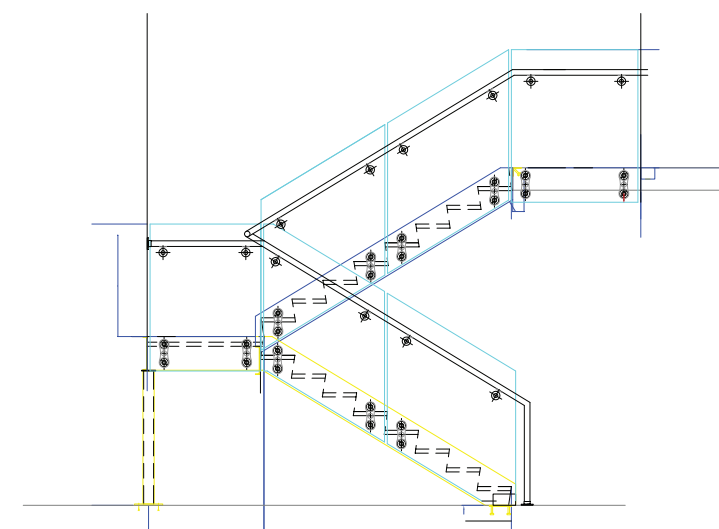
FLEXTECH SYSTEM ATTACHED TO CONCRETE AND TO PICKET STAIR

Our Flextech System works perfectly for existing conditions. If you see on the picture, the steel pan picket stairs which is very common, can be transformed and at the same time applied with FBC to accomplish an amazing clean elegant look as well as increase the perceive value. The picket stair is made out of steel and the Flextech Frameless brackets is attached to existing stringer and using a frameless glass following 2007 Florida Building Code.

Two brackets for the mezzanine guardrail hold 5 feet of glass. Glass thickness from 3/8" up to 1". This project used mechanical joints for the pipe rail. Weld tick pipe rail is also offered by Glass and Glass.

This System was not only tested in-house as well as in a Dade County Lab Test, but was also tested on job site and approved by City of Miami Beach.

Glass and Glass Flextech System works very well when encountering tension cables in concrete slabs.



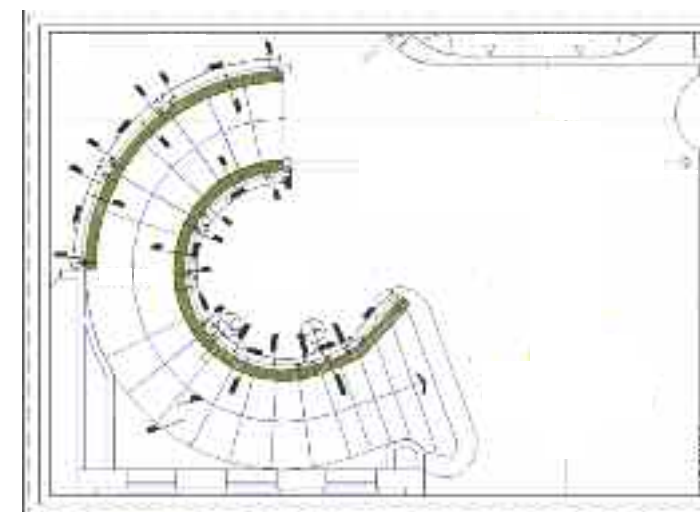


[PRIVATE RESIDENCE]

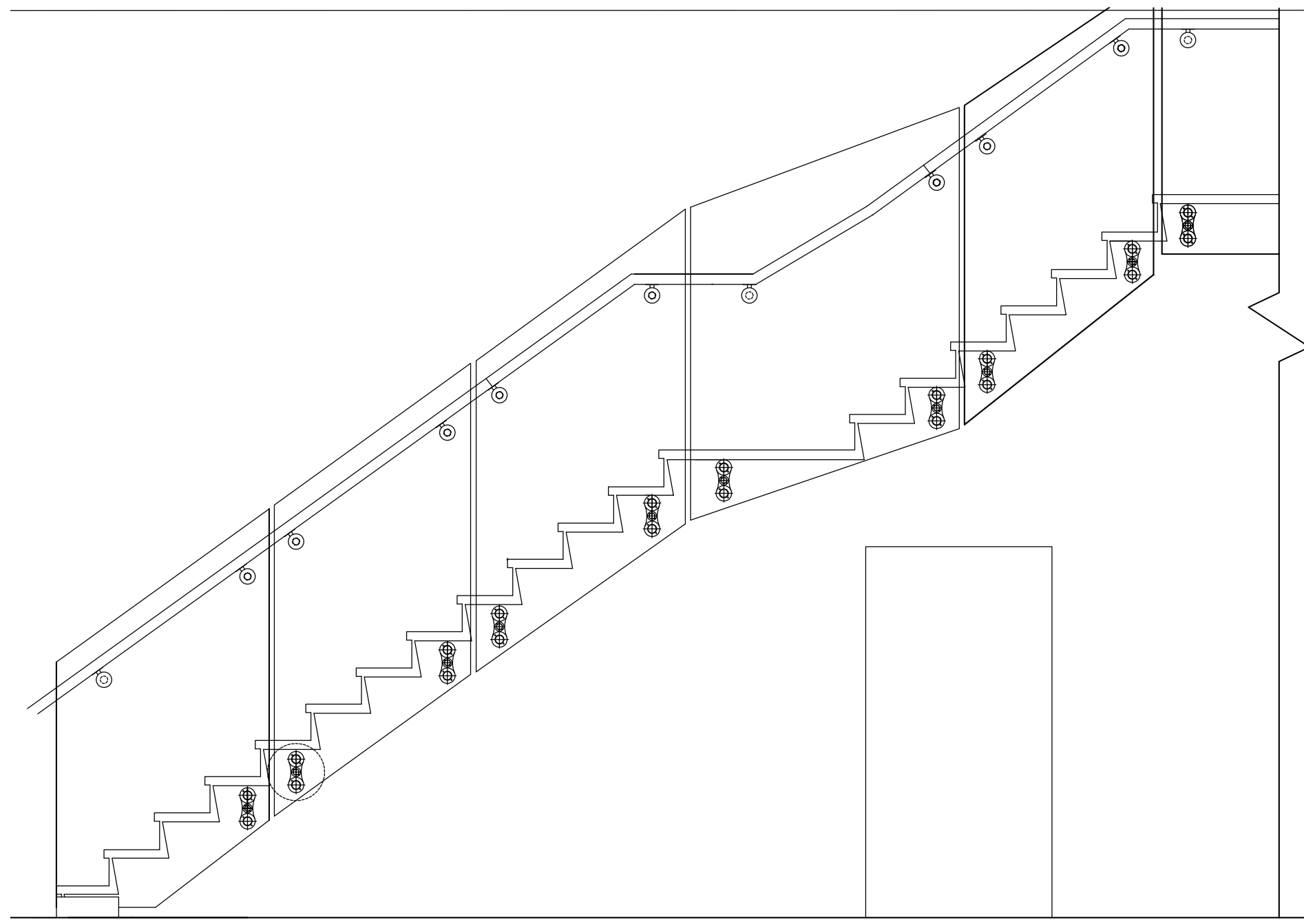
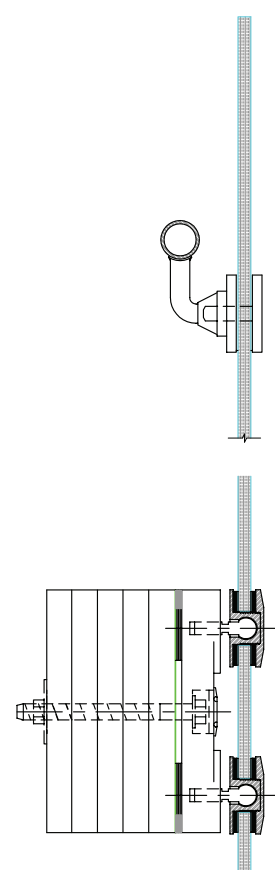
FLEXTECH FRAMELESS CURVED RAILING SYSTEM

Main stairs with very complex radius with a landing in the middle due to the length of the floor. Height of about 12 feet to the top of the slab. The radius is about 6 feet in diameter, making it very easy for Flextech to work.

The stringer is made out of 4 layers of plywood, formed and bended at the job site. Stringer was then covered by false stone finish, and top of steps covered by marble. Side mounted pipe rail was bent into different shapes, tick welded and polished at the jobsite. Glass and Glass joints for pipe rail can be mechanical or tick welded, depending on customer's budget.



[UPPER FLOOR PLAN

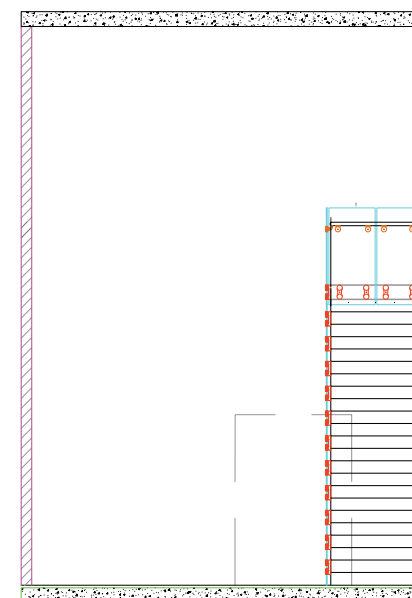


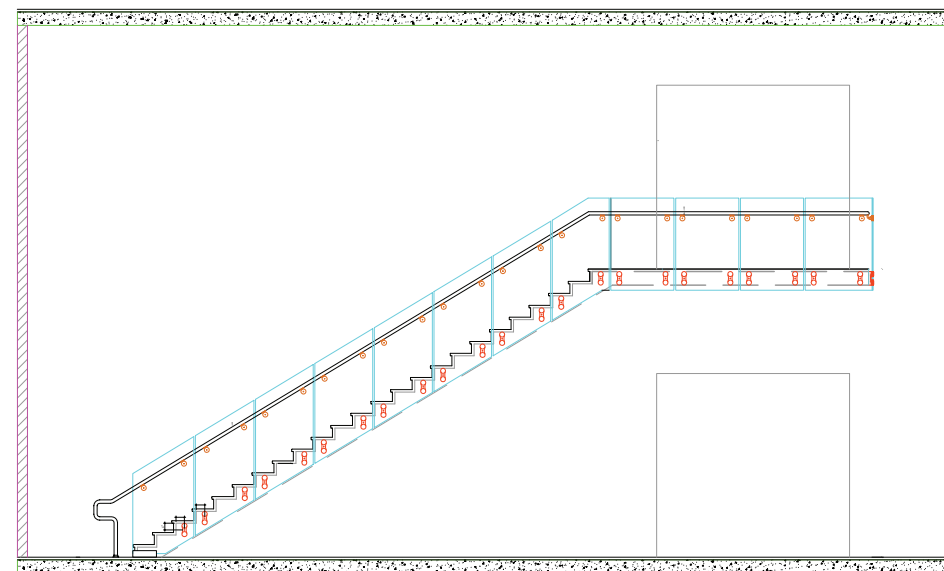


[COMMERCIAL APPLICATION]

FLEXTECH STAIRS BRACKET SYSTEM

Glass and Glass patent pending Flextech System complies with Commercial safety standards. In the picture shown, there are handrails on both sides, to comply with requirements. Also, all our Systems exceeds 2007 Florida Building Code and our FLExtech Systems are in the NOA process. One time product control approval is also offered at job site. To be used for interior and exterior applications, straight and any radius conditions.





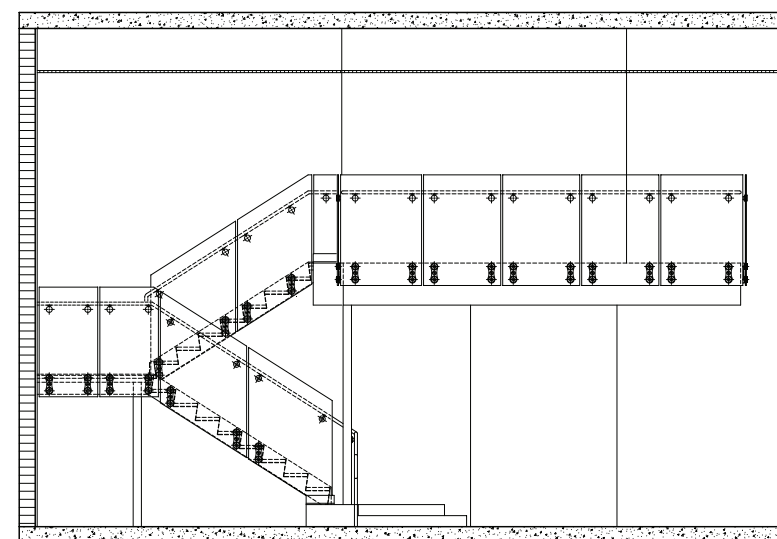
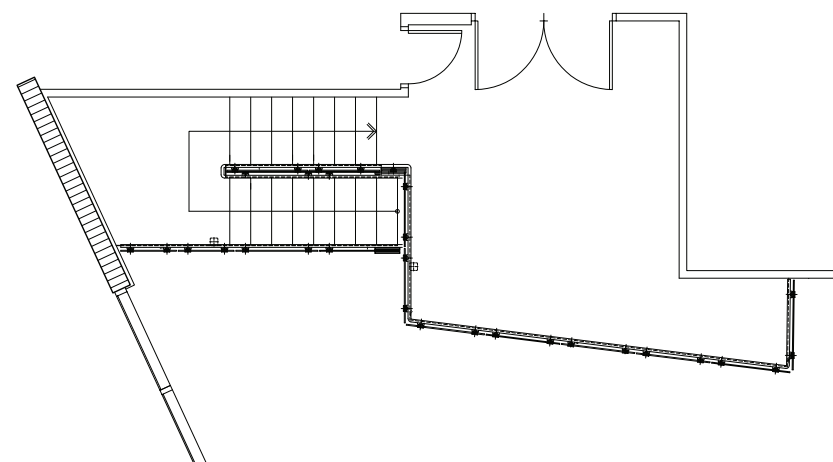


[COMMERCIAL APPLICATION]

FLEXTECH FRAMELESS SYSTEM WITH MAIN BRACKET HIDDEN

Glass and Glass transformed the regular main pan stair into a work of art, by cladding all the exposed stringer and columns with brushed stainless steel. The main part of the bracket is covered by cladding, creating a more frameless effect; it gives the illusion that the heads are the only components holding the heavy glass. All side mounted handrail was tick welded and brushed on site for better fitting.







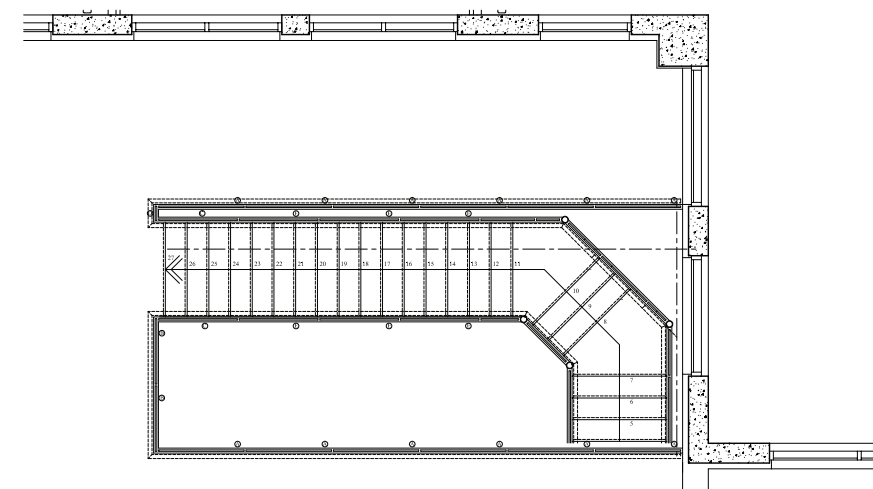
[FLEXTECH INTERIOR
BASE SHOE SYSTEM]

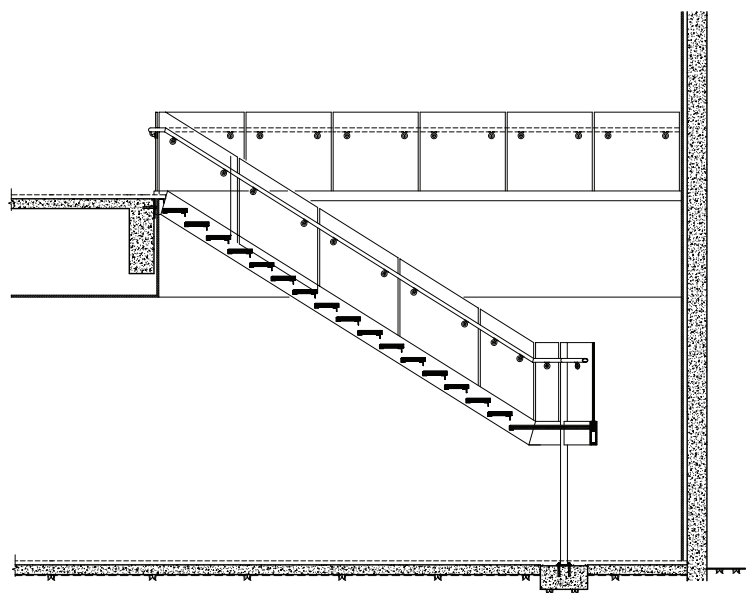
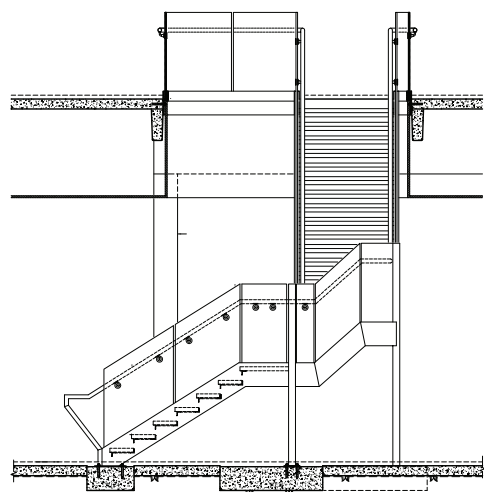


[COMMERCIAL APPLICATION]

FLEXTECH INTERIOR BASE SHOE SYSTEM

In order to comply with the shearing factor for FBC compliance (Florida Building Code), we use different textures on top of our glass landings and glass steps. Glass and Glass also make custom texture lines or any design. We also apply clear coating that is used in the marble industry and can be applied after the finish, just like the marble used in a pool area to prevent people to slip. This special coating must be reapplied accordingly to the use.

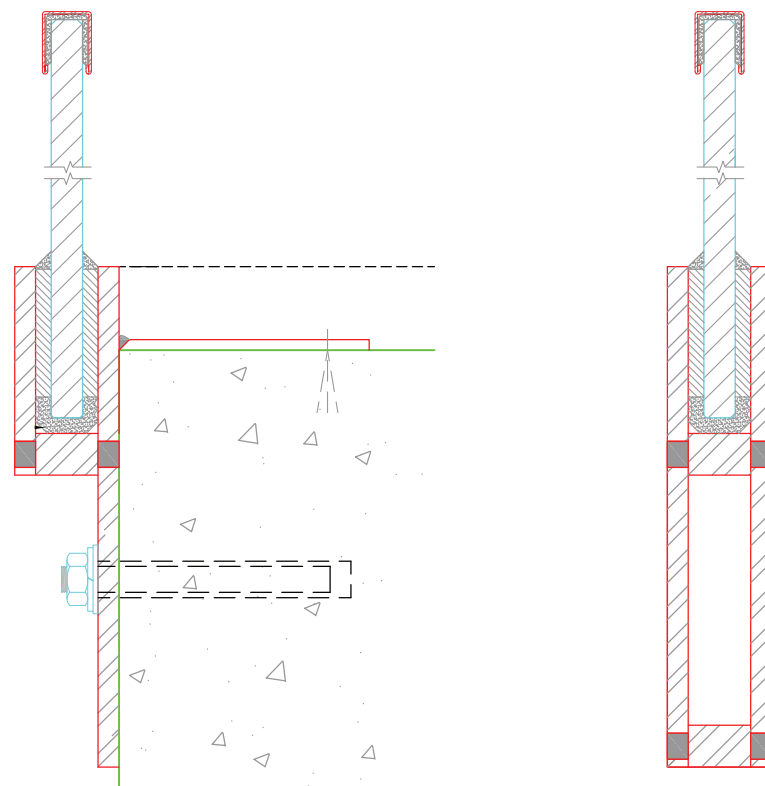






[FLEXTECH INTERIOR
FREE STANDING
BASE SHOE SYSTEM]





[PRIVATE RESIDENCE]

FLEXTECH INTERIOR FREE STANDING BASE SHOE SYSTEM

This is the first free standing Flextech Base Shoe Rail glass stair with glass landing and glass steps ever approved by the City of Coral Gables, Florida, after three months of design and engineering, collaborating with the engineering department of the City. We were able to make a safety conversational piece of artwork in a \$15,000,000.00 Private residence, which is the focal point of the Penthouse. All glass is 3/4" extra-clear tempered, high polished edges and hand polished glass finish to increase glass brightness. The square cap rail is made out of brushed stainless steel, tick welded and brushed at job site. Steps are made of 4 layers of 3/8" laminated satin with Italian technology. Metal is covered with dry powder coating.

This System is very cost effective since it is top mounted and/or side mounted for same price and it save labor time at time of installation.





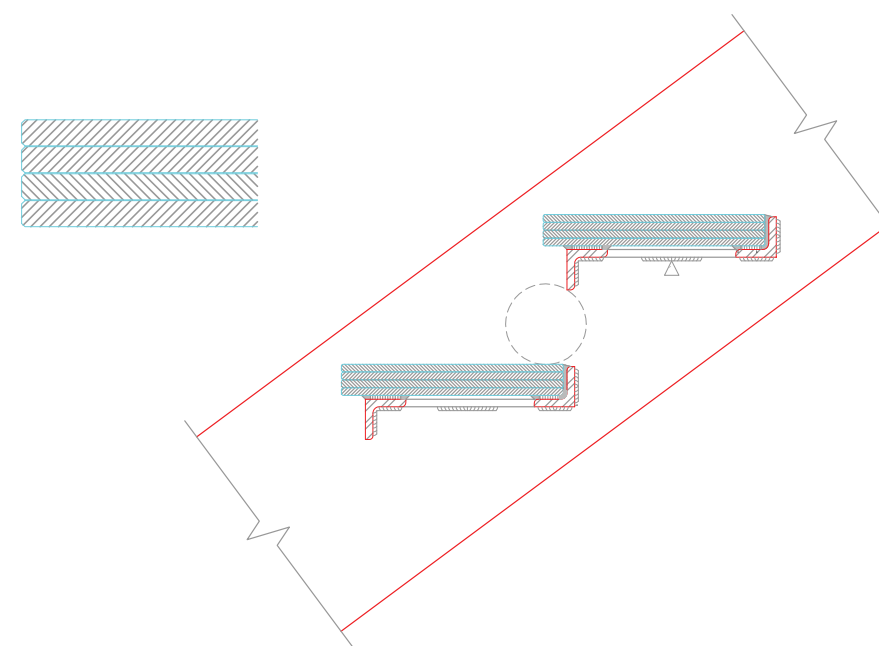
[PRIVATE RESIDENCE]

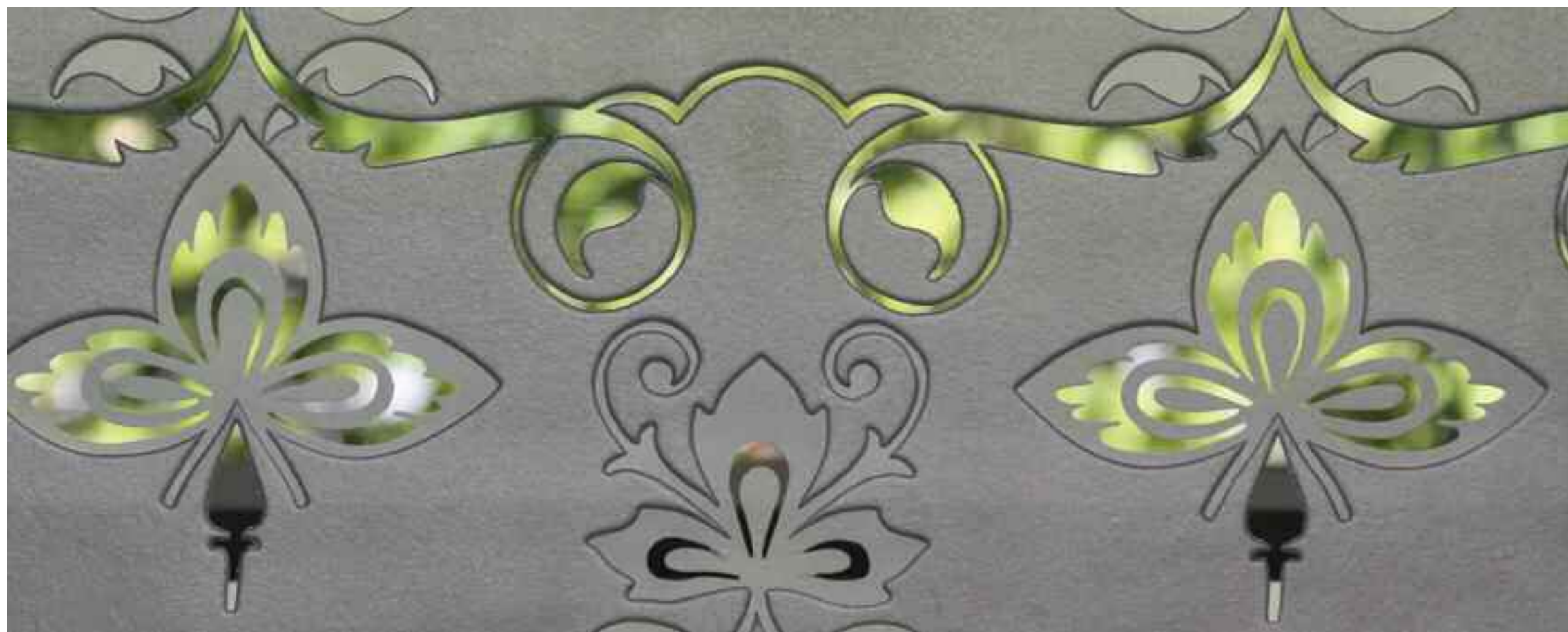
FLEXTECH INTERIOR FREE STANDING SHOE SYSTEM

The Flextech Interior Base Shoe Rail on the mezzanine level is covered to give a feeling that glass is coming out of marble and floating.

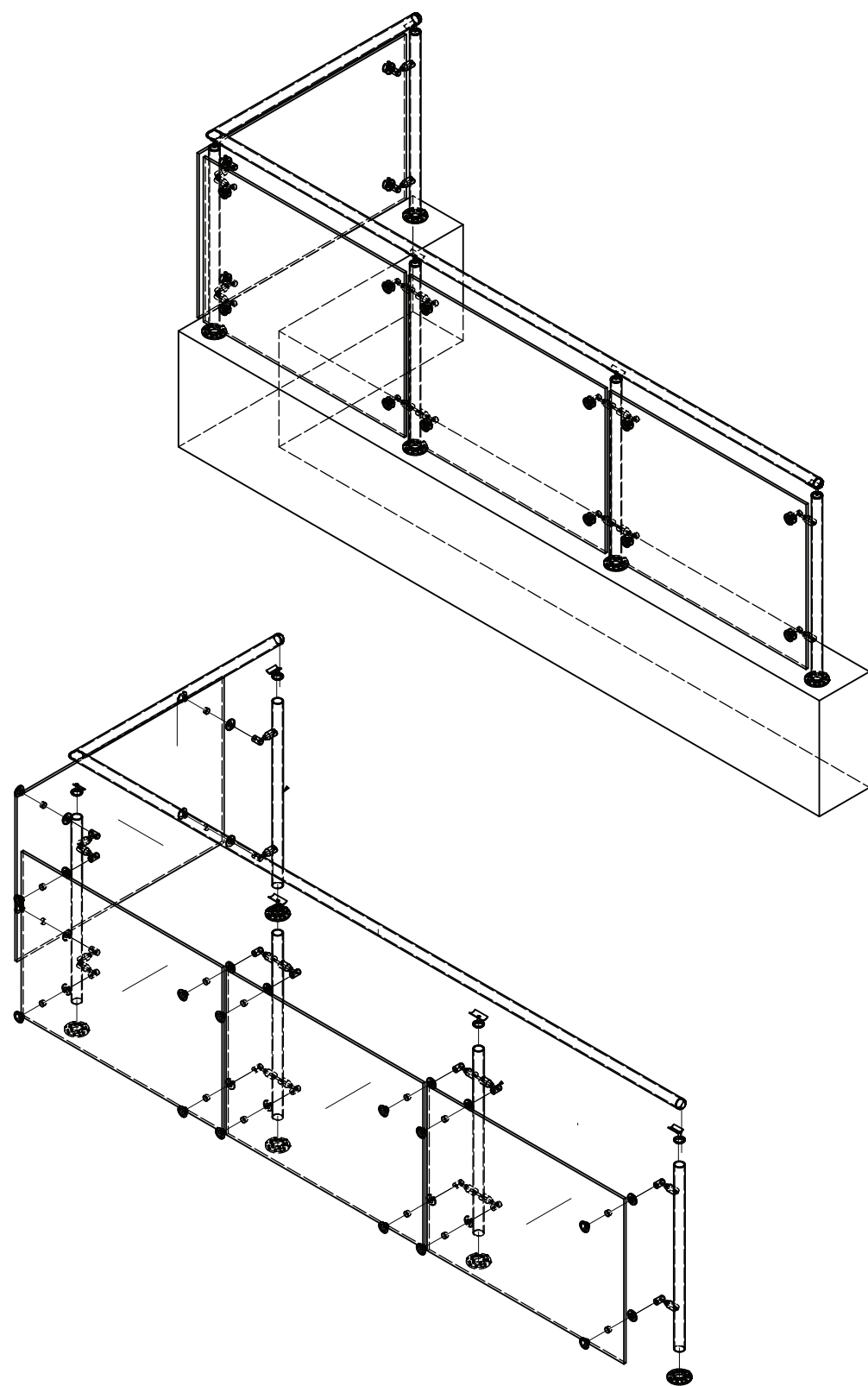
Glass and Glass unique Base Shoe support system need less holes to be attached to the concrete, and requires less installation labor time than others in the market. Flextech Base Shoe Rail can work from 1/2" up to 1" glass thickness.

STEPS: Glass and Glass was able to simulate open risers with steel meeting building codes compliance. The steps can be lighted up at night with a LED system to give different ambiances to the room.





[FLEXTECH POST FOUR HEAD
AND "FINS" POST
THREE HEAD SYSTEMS]

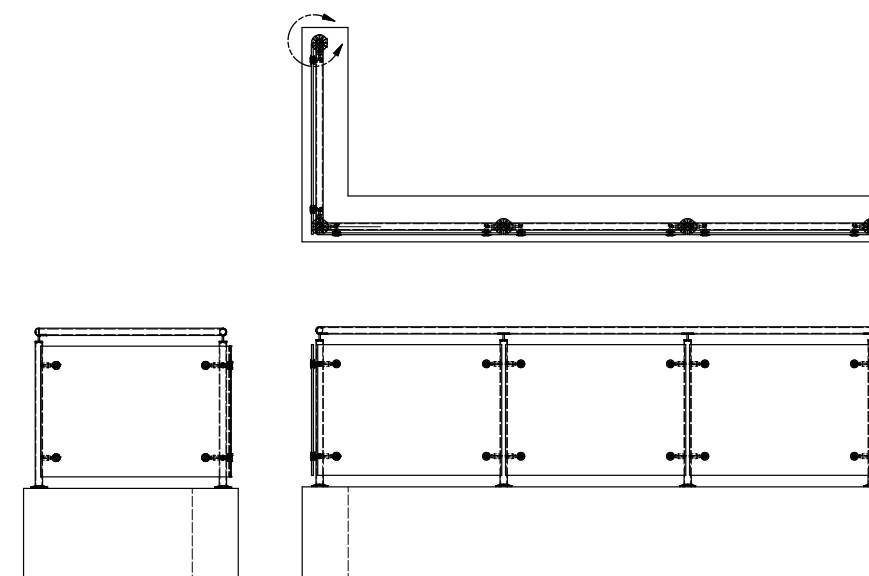


[FLEXTECH POST FOUR HEADS SYSTEM
FOR STRAIGHT AND CURVED GLASS]

This is the Only Post System with patent pending movable Flextech heads, that allows to comfortably adjust to radius glass with proper support.

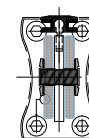
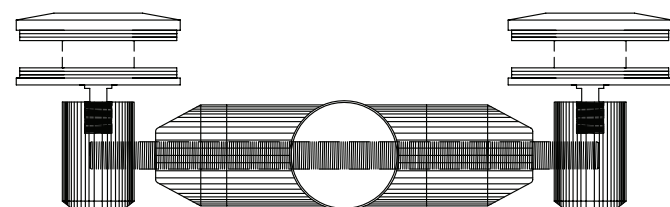
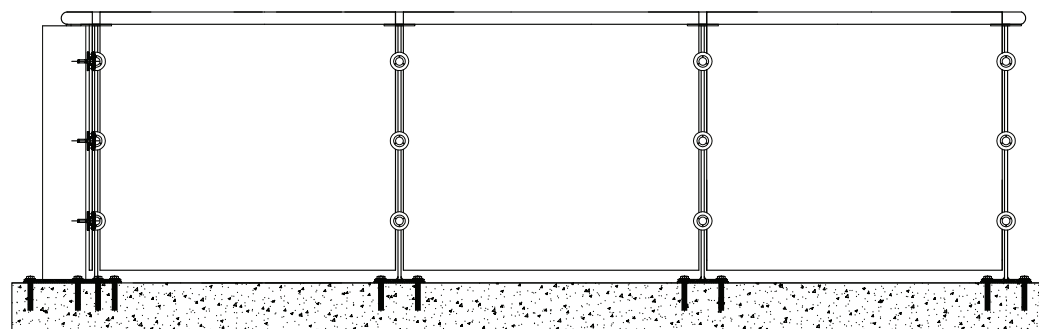
Shown in straight conditions, can also be perfectly used for curved conditions with curved glass with same 3 feet radius advantage. This Flextech Post 4 heads System can be used for interior and exterior applications. Glass thickness can go from 3/8" up to 3/4" Laminated Glass.

Our Flextech Post 4 Heads System can be top mounted and side mounted. It meets 2007 FBC and pass impact test. It withholds 400 pounds test, as well as deflection test for 2007 Florida Building Code. The installation is faster for being mechanical.

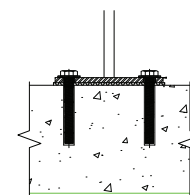


[FLEXTECH "FIN" POST WITH THREE HEADS SYSTEM]

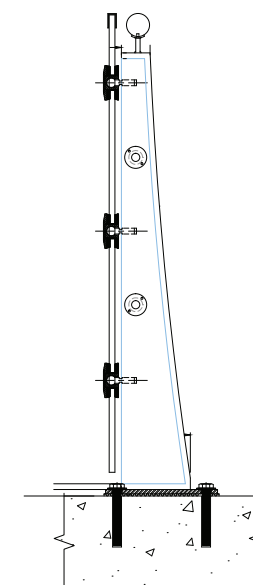
This Cost effective system, cost less per Linear Foot because every 4 feet requires only 3 Flextech Heads. The aerodynamic Fin takes 50% of the load, and it has laminated glass features between the stainless steel as part of the post, making this Flextech FIN POST safety, unique and futuristic. It is ready to be used for Interior and Exterior applications. All our Flextech System comes with a non-tamper hardware that makes it safety from unauthorized user which could jeopardize the safeness and compliance with building codes.



BASE PLATE DETAIL [PLAIN VIEW]



BASE PLATE DETAIL [SIDE VIEW]



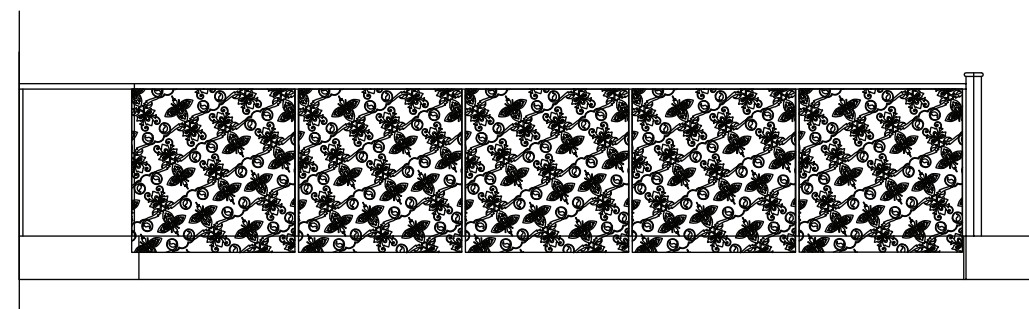


[ARTISTIC GLASS RAILING]

This custom made design was applied into the 3/4" extra -clear starphire glass, giving the glass railing a unique and stylish look.

In any of our systems, we can convert a clear glass panel into a piece of functional art, by utilizing any of our decorative design glass patterns. To be used with any of our Flextech Railing Hardware Systems.

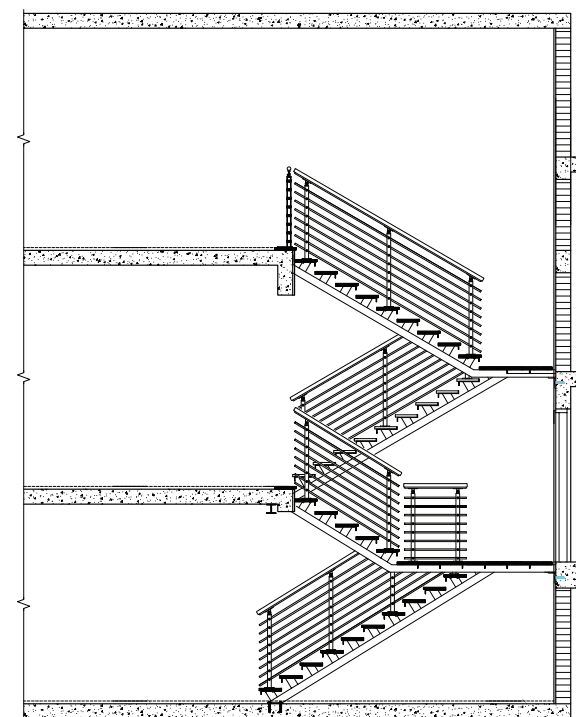
We have over 350 different patterns and textures that can be adapted and laminated, etched inside the glass as inner layers, or simply an outside etched design on one side or both sides of the glass, creating an extremely and unique tri-dimensional look. We can apply any of our hundreds designs, or we can make any custom design as per customer's request.





[ARTISTIC GLASS RAILING]

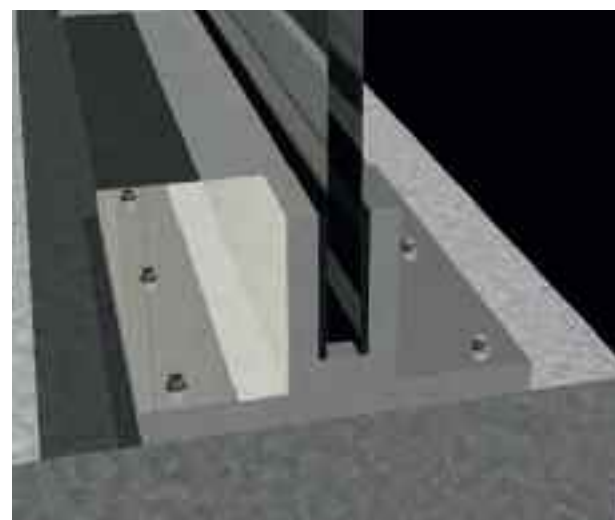
Our Mecano System is made with latest 2007 building code compliance (400 pounds drop test). It can be easily attached to any step, steel or concrete, in existing or brand new stairs. Glass and Glass Mecano System comes with solid 1" satin brushed stainless steel post and rods, and customer can combine it with stainless steel pipe or wood, as well as pipe covered with wood. We design, engineer and install the steel structure and steel railings. Shop drawings signed and sealed for permitting are also offered.



[MECANO STAIR ELEVATION

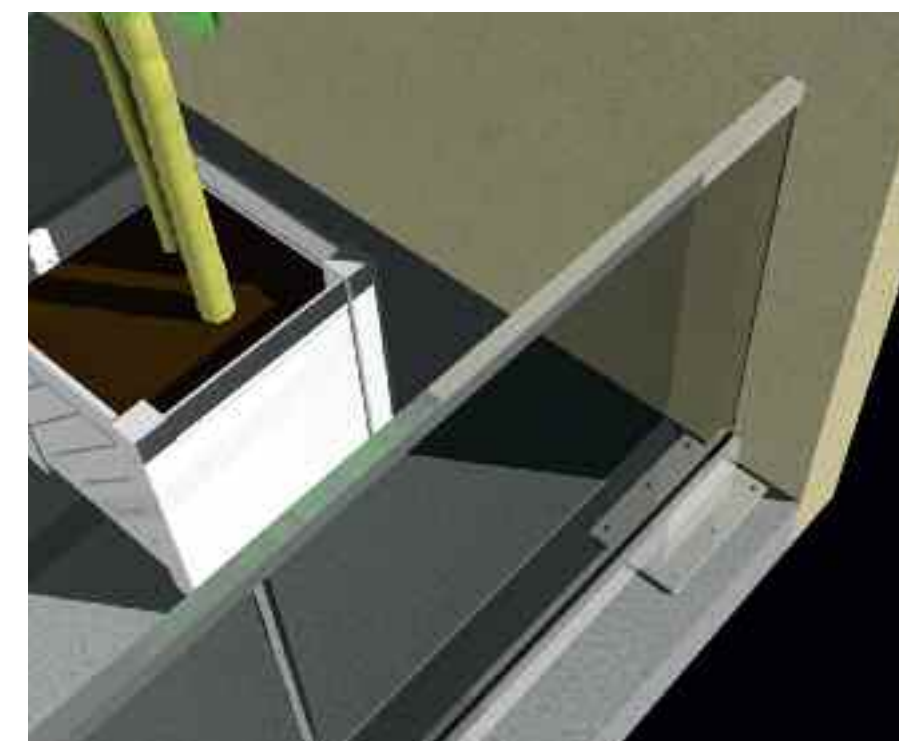


[FLEXTECH EXTERIOR
BASE SHOE SYSTEMS]



[FLEXTECH EXTERIOR BASE SHOE SYSTEM WITH LAMINATED IMPACT GLASS]

This is the only Exterior System engineered for 2007 FBC. This system was created due to the customer wanting to have a shoe rail to be 6" or 7" on top and inside the slab. This can be used in a regular slab condition without damaging the structural part of the concrete. It allows also the water to go under for easy drainage. Our System is engineered following 2007 FBC requirements. All hardware is made out of brushed stainless steel, and is used with 3/4" impact safety laminated glass and brushed stainless steel caprail. Very easy to install, our Flextech Exterior Base Shoe System is the simplest and fastest installed system on the market.





[THE GLASS COLLECTION]

[ARCHITECTURAL ARTISTIC LAMINATED GLASS]

Safety laminated annealed or tempered glass using different materials. Other colors available.

Type of Glass: Clear and Extra-Clear

Thickness: 1/2" up to 2"

Size: Up to 36" x 96"

Applications: Partitions, Wall coverings, Countertops, Table Tops, Glass furniture

GL-841 LIB
GL-VEIL



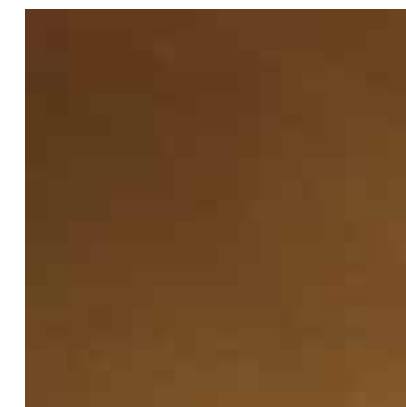
GL-SAND
GL-824



GL-593
GL-7



GL-843 LI
GL-BUBBLE



GL-814
GL-SATIN COLOR



GL-669
GL-801

[ARCHITECTURAL TEXTURED LAMINATED GLASS]

Fully Tempered and Safety Laminated glass with a texture on one side.

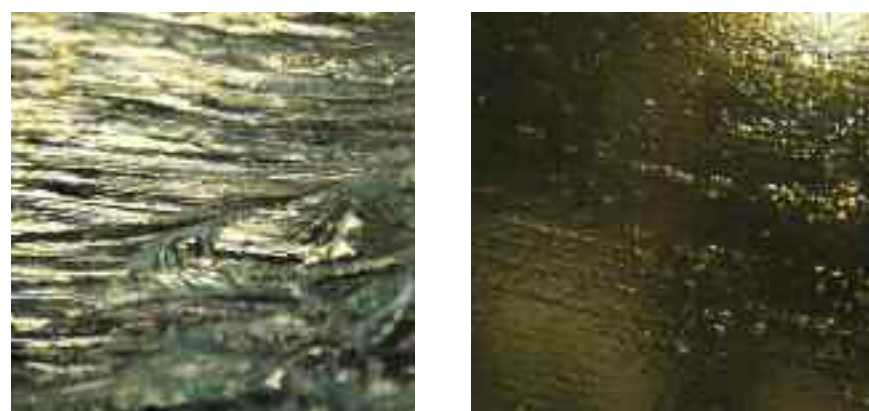
Type of Glass: Clear and Extra-Clear

Thickness: 1/2", 3/4", 1"

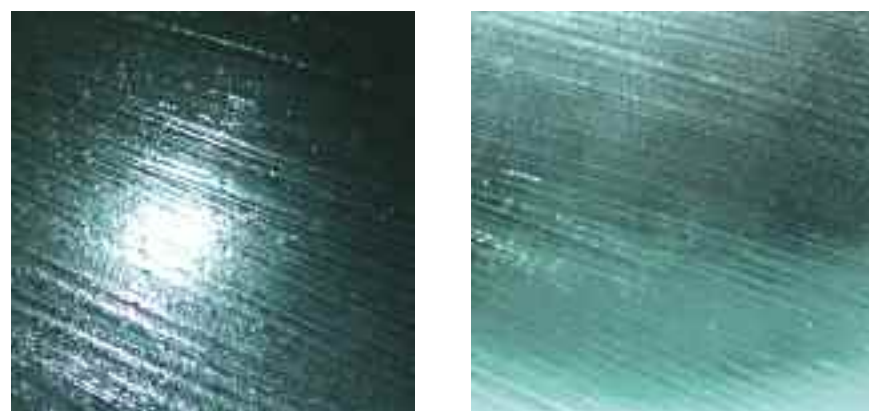
Size: Up to 36" x 96"

Applications: Doors, Partitions, Wall coverings, Countertops, Table Tops, Glass furniture, Lighting

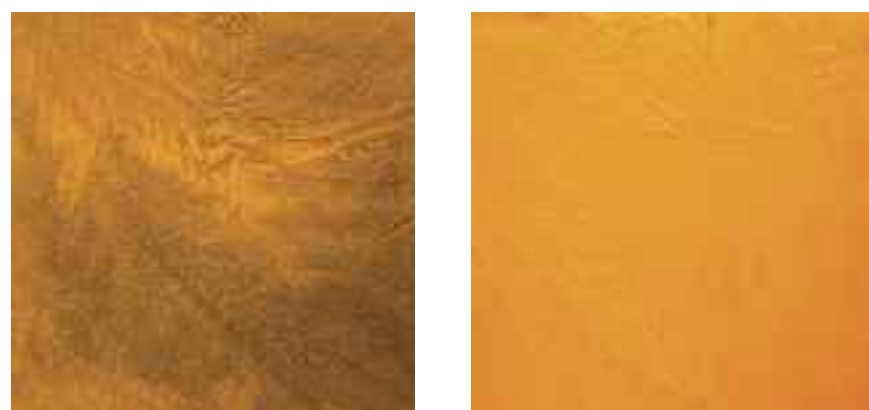
GL-105
GL-596



GL-595 DARK
GL-595 LIGHT



GL-MYSTICAL YELLOW SHADOW
GL-MYSTICAL YELLOW LIGHT

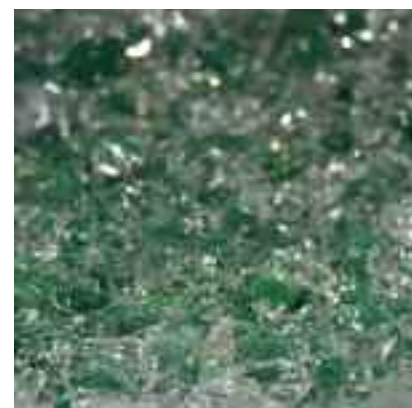


GL-SQUARES
GL-3GG



GL-3GB

GL-GOLDEN GOD
GL-101 GREEN



GL-101 YELLOW
GL-700



GL-CAST PALM
GL-700 WGC



[CAST GLASS]

Special glass that can be made with or without lamination. Custom design and custom colors available.

Type of Glass: Clear and Extra-Clear

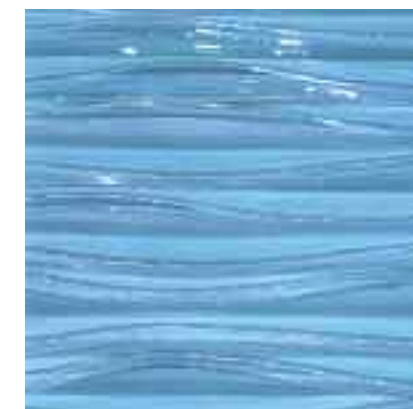
Thickness: 1/2", 3/4", 1"

Size: Up to 36" x 72"

Applications: Partitions, Wall coverings, Countertops, Table Tops, Glass furniture, Glass features



GL-700 CLBM
GL-700 CLM



GL-700 GS
GL-WAVES-BLUE



GL-WAVES-BRONZE
GL-WAVES-BUBBLE

[ARCHITECTURAL CARVED GLASS]

Annealed or Tempered glass with Carving on one side or as a inner layer. Can be laminated or non-laminated. More design and colors available.

Type of Glass: Clear and Extra-Clear

Thickness: 1/2", 3/4", 1" up to 2"

Size: Up to 36" x 96"

Applications: Overlays, Partitions, Wall coverings, Countertops, Table Tops, Glass furniture

GL-WAVES
GL-LABYRINTH



GL-CB 30
GL-CB 34



GL-521G
GL-832

[ARCHITECTURAL CARVED GLASS]

Annealed or Tempered glass with Carving on one side or as a inner layer. Can be laminated or non-laminated. More design and colors available.

Type of Glass: Clear and Extra-Clear

Thickness: 1/2", 3/4", 1" up to 2"

Size: Up to 36" x 96"

Applications: Overlays, Partitions, Wall coverings, Countertops, Table Tops, Glass furniture

GL-902
GL-902 B



GL-903
GL-DECO



GL-MODERN PALM
GL-SATIN MODERN PALM



GL-FB 36
GL-GRAPES

GL-GRATEFUL ROSE BLACK



[ETCHED PATTERN GLASS]

Annealed or Tempered glass with over 350 designs to choose from, can be etched on one or both sides. Custom design available upon request.

Type of Glass: Clear and Extra-Clear

Thickness: 3/8", 1/2", 3/4"

Size: Up to 52" x 120"

Applications: Glass railings, Doors, Partitions, Wall coverings, Countertops, Table Tops, Glass furniture

GL-ORGANIC
GL-643



GL-CARLOS
GL-GRATEFUL ROSE

[45 DEGREE ANGLE POLISHED GLASS EDGE
AND MULTIPLE LAVISHED COLOR LAYERS]

Glass and Glass unique Italian process of 45 degree angle glass edge that is applied to a laminated glass, creating a unique look. Can be satin finish.

Type of Glass: All types and all colors

Thickness: All thickness

Size: All sizes

Applications: Countertops, Table Tops, Glass furniture

GL-10
GL-10 M



GL-2003
GL-2004

[GEOGLASS]

Pat. pend. 95% recycled glass. The formula and process we developed utilizes both regular and tempered glass scraps. Each 24" x 24" tile recycles 21 pounds of glass that would otherwise add to the already overflowing landfills across the country. Geoglass is available plain, with color accents, and laminated to any color, as per customer request.

Type of Glass: Clear and Extra-Clear

Thickness: 3/4", 1"

Size: Up to 36" x 36"

Applications: Wall coverings, Countertops, Table Tops, Tiles

GL-GEO CR
GL-GEO PLAIN



GL-GEO SB
GL-GEO CB

[ARCHITECTURAL DECORATIVE LAMINATED GLASS]

Safety laminated annealed or tempered glass with an inner layer design.

Type of Glass: Clear and Extra-Clear

Thickness: 1/2", 3/4", 1" up to 2"

Size: Up to 36" x 96"

Applications: Doors, Partitions, Wall coverings, Countertops, Table Tops, Glass furniture, Lighting

GL-RITZ
GL-629 A



GL-652
GL-653



GL-GRATEFUL ROSE FRONT
GL-GRATEFUL ROSE BACK

GL-802
GL-RSJ



GL-654





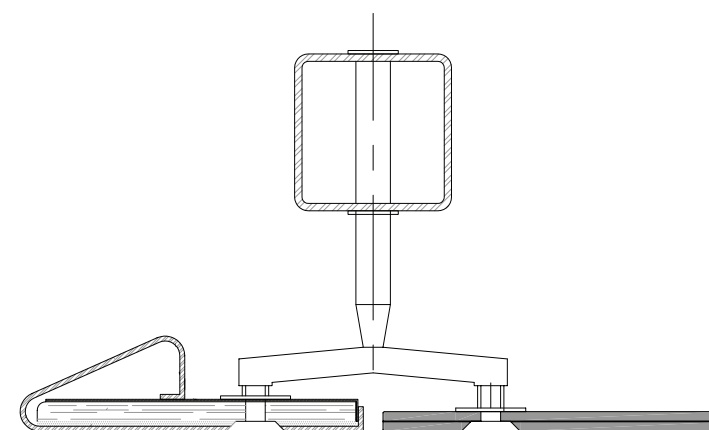
[ARCHITECTURAL GLASS]

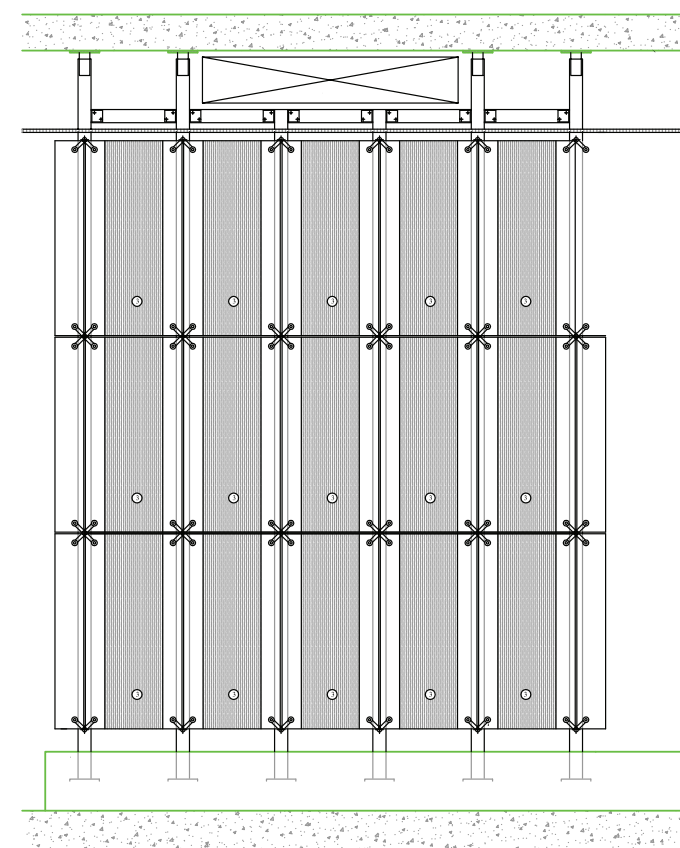
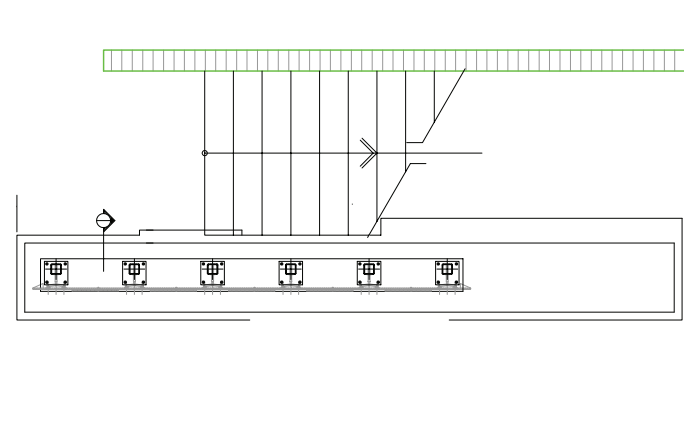
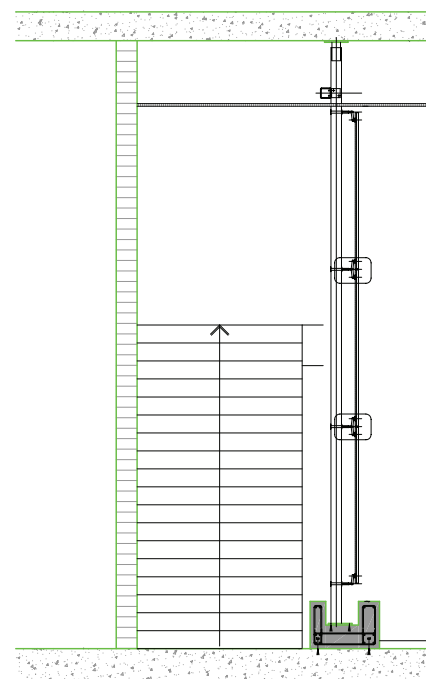


[COMMERCIAL APPLICATION]

GLASS FEATURE

Glass and Glass' creation of a custom made frameless laminated cast glass and stainless steel sculpture, where over 20,000 pounds of glass were suspended. The architect's concept was to create a frameless glass waterfall, without the maintenance of the water. These glass panels needed to be installed all at the same level. The key element was transparency and the support for these massive glass walls. Our technical team invested many hours developing and properly testing the system to use for this application. Each cast glass panel size is 32" x 62", and a total of 3 panels stacked on top of each other. All stainless steel was designed, engineered and manufactured by Glass and Glass. For the glass we used our GL-700, 1" thick cast glass laminated to a 1/2" laminated tempered glass, suspended with the spider system.



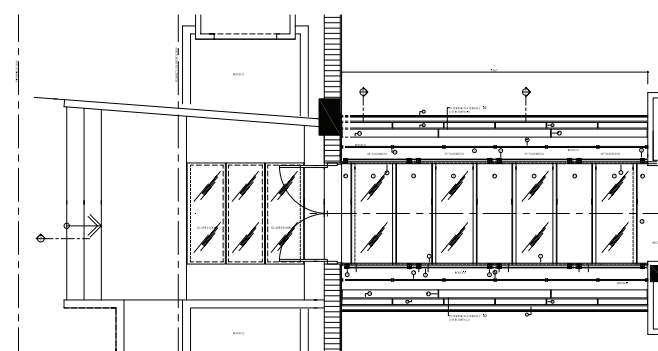




[COMMERCIAL APPLICATION]

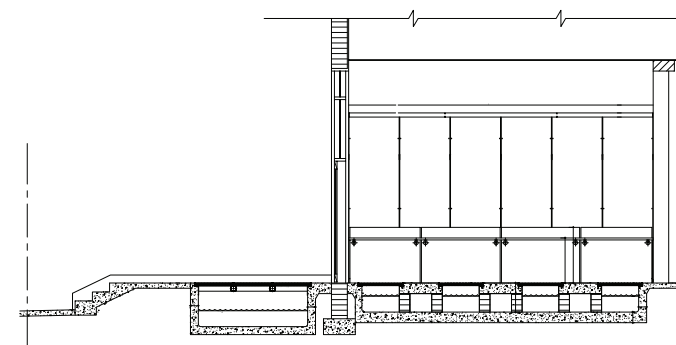
GLASS FLOOR

Large laminated panels of over 2" thick. Glass and Glass provided design, engineering and special testing for this floor. The glass floor has anti-slippery coating that needs to be maintained every year for proper qualification. This glass floor was made using Glass and Glass lamination process.



GLASS RAILING BRIDGE

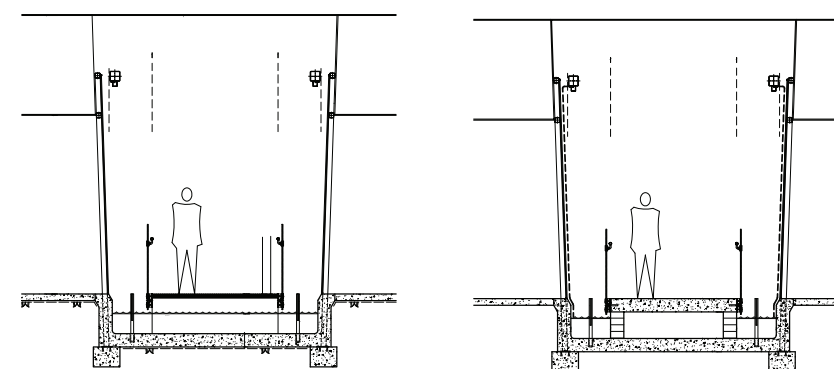
Glass and Glass' Flextech Brackets System safely attaches the heavy glass to a glass bridge. All our Flextech Brackets are solid 316 marine grade stainless steel.





[COMMERCIAL APPLICATION]

Glass sculpture using Glass and Glass laminated artistic glass and engineering. This glass sculpture is on the exterior part of the restaurant and is used as a focal point of attraction. Glass used is carved and laminated with GL-waves, in a color requested by architect. Glass panels are about 28" x 80" each. Steel structure was designed, engineered and installed by Glass and Glass.





[COMMERCIAL APPLICATION]

GLASS WATERFALL

Exterior Glass Waterfall made out of 1 ½” thick satin glass with frame all around and in between, using structural silicone joints. Glass and Glass designed and engineered glass water fall to be installed straight, and it was installed on an angle following specific customer’s request.





[PRIVATE RESIDENCE]

FRAMELESS GLASS CEILING

Pat pend Flextech Head Brackets were used for glass ceiling application. Our flextech brackets hold our frameless glass panels onto the ceiling, with no additional support. Glass is made out of $\frac{3}{4}$ " laminated satin glass, in sizes of 32" x 72", with LED lights between glass and ceiling, to be optionally lighted to create different ambiances. All exposed glass edges are high polished, and there is about 1" space between each glass panel.



[PRIVATE RESIDENCE]

GLASS FIRE PLACE

Glass and Glass designed and engineered a glass box made with a unique laminated glass, Inside the glass box there is a LED lighting with a control system computerized. Overall size for the glass is 8' in length x 7' in height. The architectural glass is laminated and has a custom made design.



LAMINATED SATIN PARTIAL GLASS WALL

Glass panel attached to wall laminated with satin lines design and different percentages of satin. You can get 100% aluminum oxide finish on glass and by creating satin from 0% to 100%, you can control the degrees of transparency of the glass. The effect shown on picture is created by applying different levels of satin from 30% to 80%, using Italian technology. The stainless steel glass support was designed and engineered by Glass and Glass.





[PRIVATE RESIDENCE]

RED TEXTURE GLASS WALL

Custom made Red glass tiles (GL-801) using different sizes and different thicknesses, to create this tri-dimensional piece of artwork. Glass and Glass tiles are cut up to sizes 48" x 48". We laminate layers of 1/4", 3/8", 1/2" and 3/4" to created different effects. The aluminum oxide covers some of the front pieces and some of the side pieces. We can also control the effects on the glass. Available in any color.

FRAMELESS GLASS CEILING LIGHTED

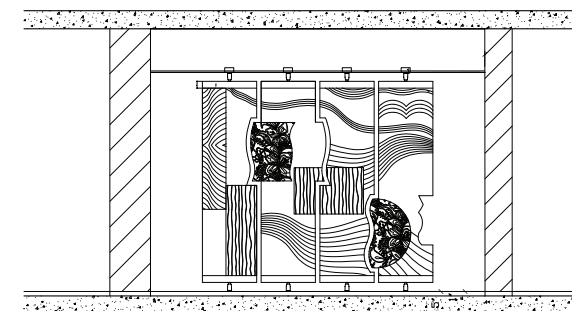
Frameless glass safety ceiling using our laminated glass and pat pend Flextech Head brackets. Picture shown with glass ceiling lighted with LED, giving to the glass a brighter color, making the foyer a special welcome.





[PRIVATE RESIDENCE]

Glass and Glass unique glass partitions are made out of interlocking 1/2" carved and tempered glass, with tri-dimensional laminated overlays, and custom made Swivel support on top and bottom with custom made stainless steel channels. Glass panel Sizes shown are 87" in height. This functional art is truly a conversational piece. Design, engineering and installation by Glass and Glass. Colors, sizes, design and quantities are customizable to client's preference.



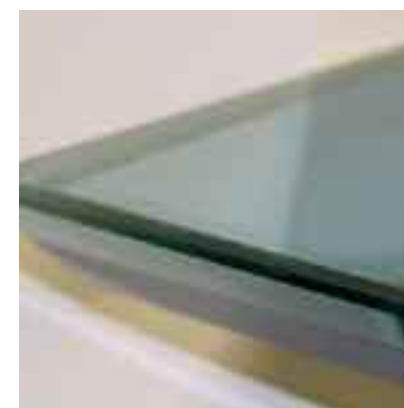
[SWIVEL PARTITION ELEVATION



[COMMERCIAL APPLICATION
HOTEL SPA ENTRANCE: GREEN RITZ CARLTON, NC]

GLASS COUNTERTOP

Unique custom made countertop of over 2" in thickness with 45 degrees angle cut , and border high polished with Italian machine and technology. This countertop can be used for many different applications like kitchen, bathroom, bar, etc).



ARTISTIC LIGHTED GLASS

Architectural laminated decorative glass in front of counter lighted from the back and framed in brushed stainless steel. All our laminated architectural artistic and decorative glass is made in USA with European technology.

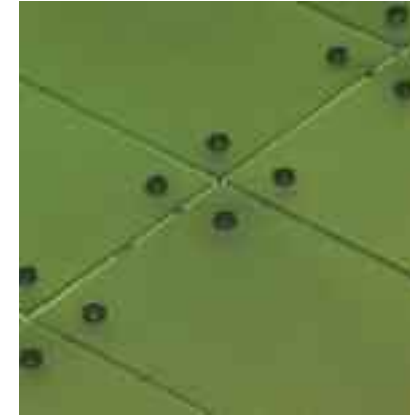




[COMMERCIAL APPLICATION]

FRAMELESS GLASS CEILING

A total of 70 panels suspended using our Pat. Pend. Flextech Head Brackets System instead of the Spider, because our heads can hold the load twice as much. The mechanical attachment also allows the glass to be safely installed on an overhead condition. This glass ceiling is 22 feet away from the ground. Design, engineering and installation by Glass and Glass.





[COMMERCIAL APPLICATION]

ARCHITECTURAL GLASS FOR CONFERENCE ROOMS

Clear or extra-clear glass, satin and or transparent, laminated and or tempered, choose over 350 designs from Glass & Glass or have your own design custom made. Our glass is suitable and safe for any application that meets 2007 Building Codes.





[COMMERCIAL APPLICATION]

ARCHITECTURAL CARVED GLASS LIGHTED

3/8" clear fully tempered carved glass with modern palm design, completely frameless and held by four small standoffs, and lighted on the back to enhance beauty. Available in any design and thickness.



ARCHITECTURAL CARVED GLASS SCULPTURE

1" laminated and carved glass sculpture with custom made stainless steel. This glass sculpture is lighted on the inside, giving intermittent color variations. Design, engineering, manufacturing and installation by Glass and Glass.



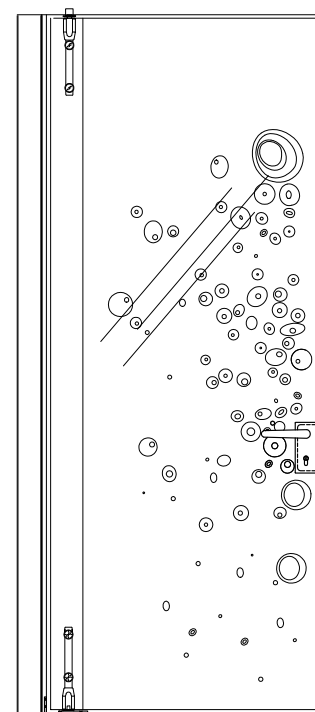


[INTERIOR GLASS DOORS]



[SWING DOOR WITH PIVOT SYSTEM]

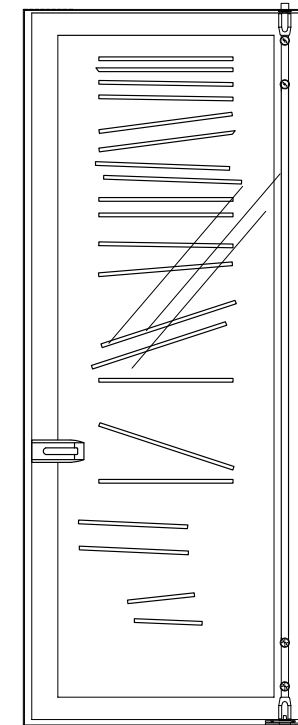
Glass door made out of tempered glass satin using aluminum oxide Italian process and design in clear with optional 100% recycle geoglass overlays. Glass door is attached to top and bottom with stainless steel pivots. This system can be used with free-swinging doors, or doors controlled by floor mounted closers. It can also be attached to glass transom and glass sidelite. Single or double door. Latch available with lock. Max weight 176 lbs. Maximum size 44 1/4" W x 98 1/2" H. Available in 3/8" and 1/2" clear or starphire glass, additional designs and colors available.





[SWING DOOR WITH PIVOT AND ROD SYSTEM]

Glass door made out of tempered glass satin using aluminum oxide Italian process and design in clear with optional 100% recycle geoglass overlays. Glass door is attached to top and bottom with stainless steel pivots. This system can be used with free-swinging doors, or doors controlled by floor mounted closers. It can also be attached to glass transom and glass sidelite. Single or double door. Latch available with lock. Max weight 176 lbs. Maximum size 44 1/4" W x 98 1/2" H. Available in 3/8" and 1/2" clear or starphire glass, additional designs and colors available.





[SWING DOOR WITH PIVOT SYSTEM]

Glass door made out of tempered glass backpainted. Glass door is attached to top and bottom with stainless steel pivots. This system can be used with free-swinging doors, or doors controlled by floor mounted closers. It can also be attached to glass transom and glass sidelite. Single or double door. Latch available with lock. Max weight 176 lbs. Maximum size 44 1/4" W x 98 1/2" H. Available in 3/8" and 1/2" clear and extra-clear glass, additional designs and colors available.





[SLIDING BAR TRACK DOOR WITH LAMINATED GLASS]

Glass door made out of tempered laminated glass. This door is attached to a Sliding System that can be attached on top or on the side. Optional lock for sliding door available. Max weight 220 lbs. Maximum size for laminated glass door is 36" W x 96" H. Maximum size for etch glass design is 44 1/4" x 98 1/2". Available in 1/2" clear or starphire glass, additional designs and colors available. Our laminated glass can be perfectly used for Swing doors with Hinges.



[SLIDING BAR TRACK DOOR WITH SATIN CARVED GLASS]

Glass door made out of tempered satin carved glass with optional 100% recycled geoglass handle. This door is attached to a Sliding System that can be attached on top or on the side. Max weight 220 lbs. Maximum size for etch glass design is 44 1/4" x 98 1/2". Available in 1/2" clear and extra-clear glass, additional designs available.





[SWING DOOR WITH PIVOT AND ROD SYSTEM]

Glass door made out of tempered satin glass using aluminum oxide Italian process. Glass door is attached to top and bottom with stainless steel pivots and rod attaching pivots for a unique look. This system can be used with free-swinging doors, or doors controlled by floor mounted closers. It can also be attached to glass transom and glass sidelite. Single or double door. Latch available with lock. Max weight 220 lbs. Maximum size 44 1/4" W x 98 1/2" H. Available in 3/8" and 1/2" clear and extra-clear glass, additional designs available.





[SLIDING GLASS DOOR WITH ROLLER TRACK]

Glass door made out of tempered satin glass, etched with a design. The Sliding System can be wall mounted, ceiling mounted, transom and sidelite mounted. Single or double door, with optional lock for sliding door. Max weight for panel is 220 lbs. Maximum size is 44 1/4" x 98 1/2". Available in 3/8" and 1/2" clear or staphire glass, additional designs available.





[SLIDING LAQUER GLASS DOOR WITH ROLLERS TRACK]

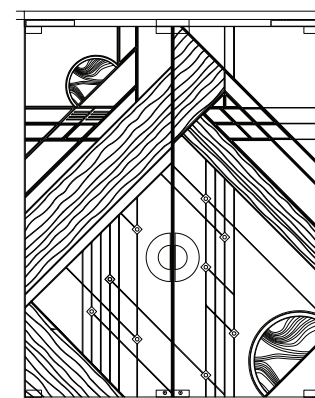
Glass door made out of tempered architectural decorative glass, carved, etched and car painted. The Sliding System can be wall mounted or ceiling mounted. Max weight 220 lbs. Maximum size is 44 1/4" x 98 1/2". Available in 3/8" and 1/2" clear and extra-clear glass, additional designs and colors available.





[ARTISTIC DOUBLE GLASS DOORS]

Combination of many types of artistic and unique laminated glass on safety metal channels. All design, engineering and installation by Glass and Glass, from fully automatic doors, to fire rated doors and tri-dimensional finish. Carved and painted on both sides.



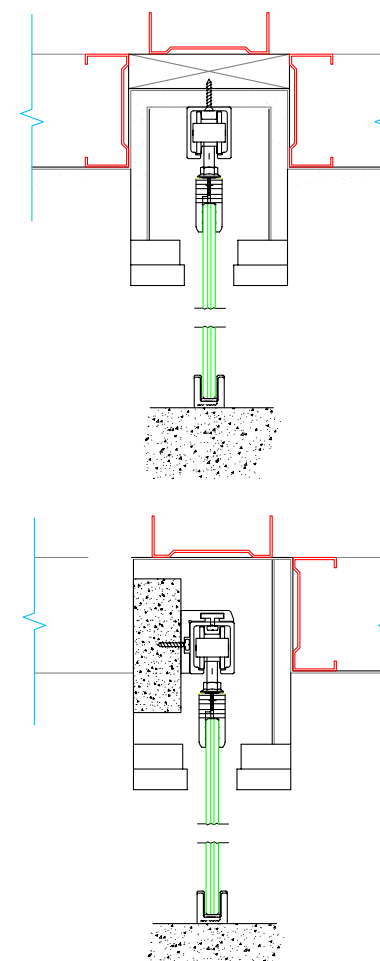
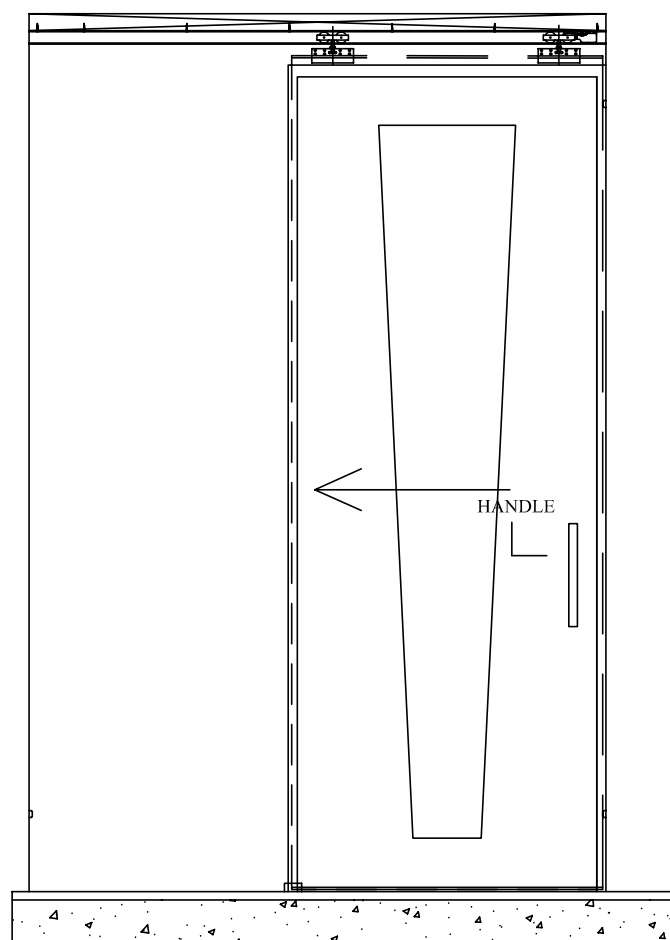
[GLASS PANELS INSERTED INTO WOOD]

Glass panels with satin design from both side made with different percentage of aluminum oxide, 1/2" fully tempered extra-clear glass. Available in over 350 designs.



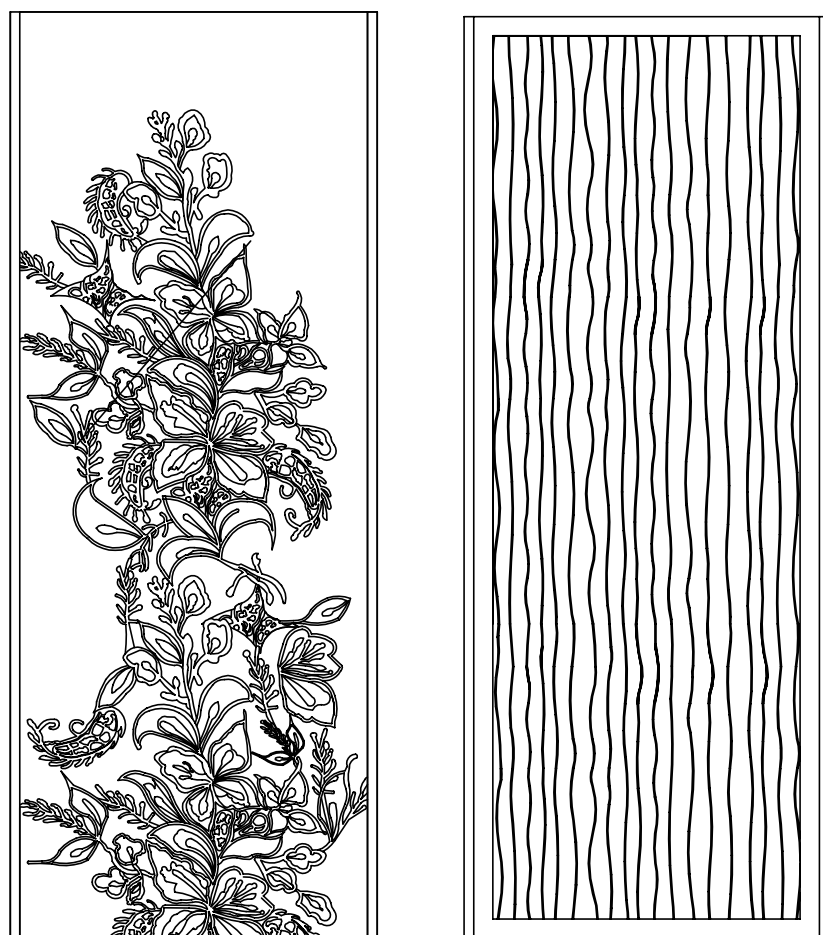
[POCKET SLIDING DOOR WITH LAMINATED GLASS]

Glass door made out of tempered architectural decorative laminated glass. This door is attached to a Sliding System that can be attached on top or on the side. Max weight 220 lbs. Maximum size for laminated glass door is 36" W x 96" H. Maximum size for etch glass design is 44 1/4" x 98 1/2". Available in 1/2" clear and extra-clear glass, additional designs and colors available. Our laminated glass can be perfectly used for Swing doors with hinges.



[GLASS DOOR "NATURE"]

Available in 3/8" and 1/2" safety tempered clear or starphire glass. You can have the design on a negative or positive image. Satin made out of aluminum oxide leaving no fingerprints on glass. All our doors can be Swing, Pocket or Sliding. Available in over 350 designs.



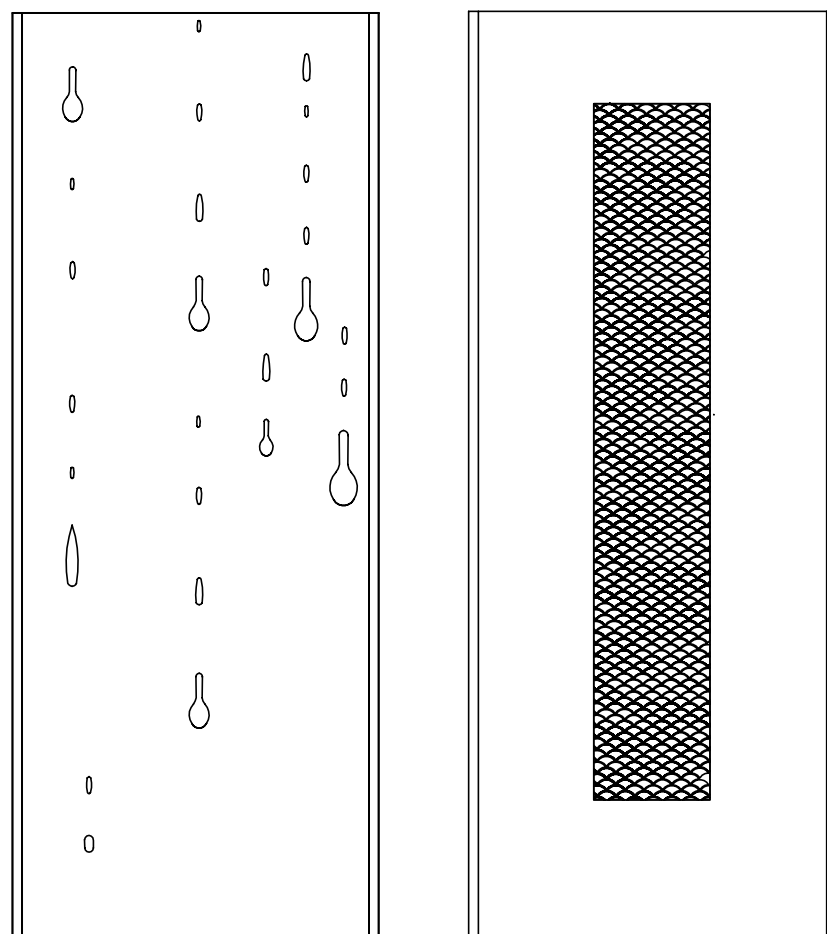
[GLASS DOOR "WAVES VERTICAL"]

Available in 3/8" and 1/2" safety tempered satin glass made out of aluminum oxide, with carved lines in vertical or horizontal mode. All our doors can be Swing, Pocket or Sliding. Available in over 350 designs.



[GLASS DOOR "DROPS"]

Available in 3/8" and 1/2" safety tempered clear or extra-clear glass. You can have the design on a negative or positive image. Satin made out of aluminum oxide leaving no fingerprints on glass. All our doors can be Swing, Pocket or Sliding. Available in over 350 designs.



[GLASS DOOR "SUNRISE"]

1/2" safety tempered architectural decorative laminated clear or extra-clear glass with inner layer design. Uniquely made and easy to maintain. All our doors can be Swing, Pocket or Sliding. Available in over 350 designs.



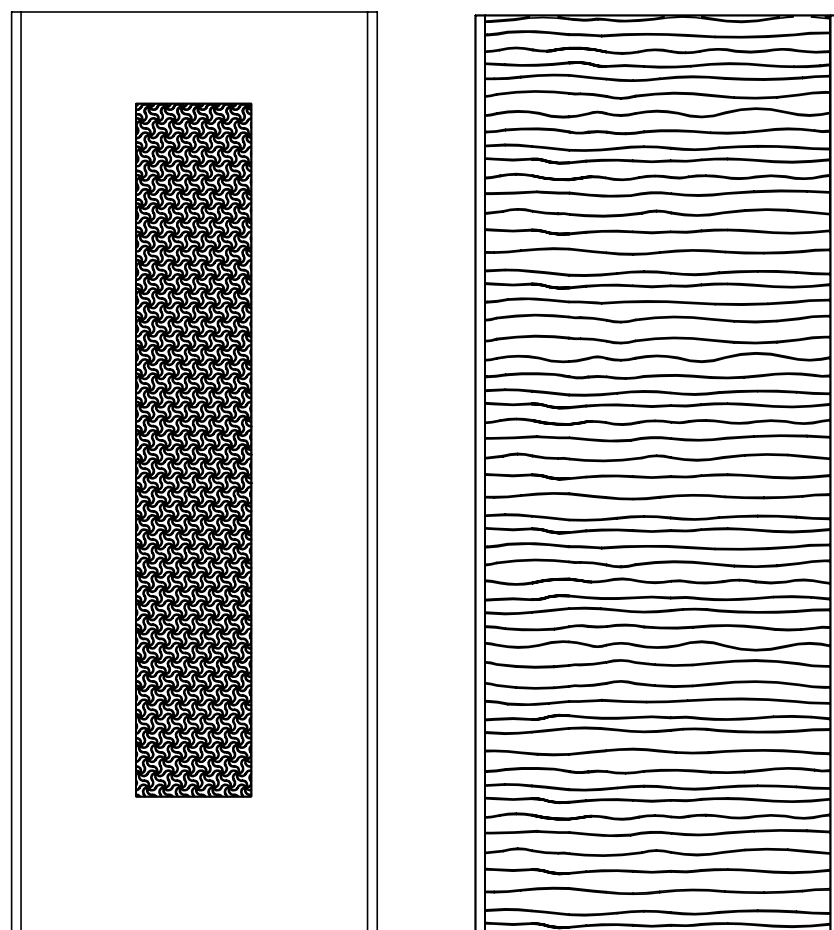
[GLASS DOOR "BOOMERANG"]

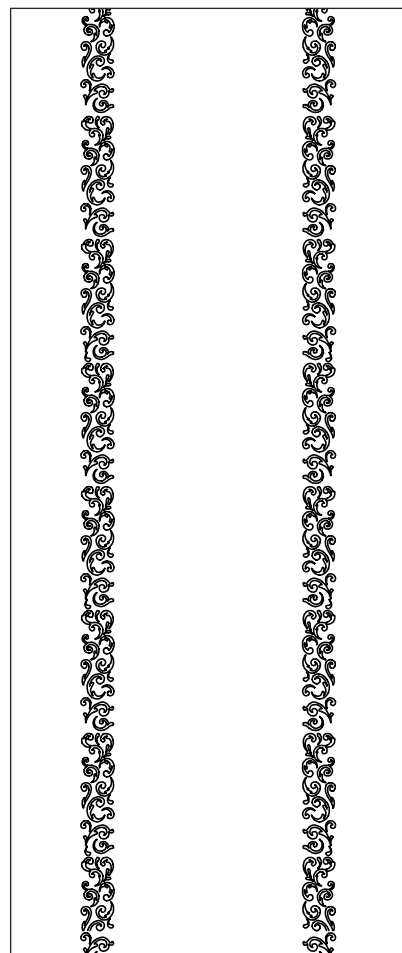
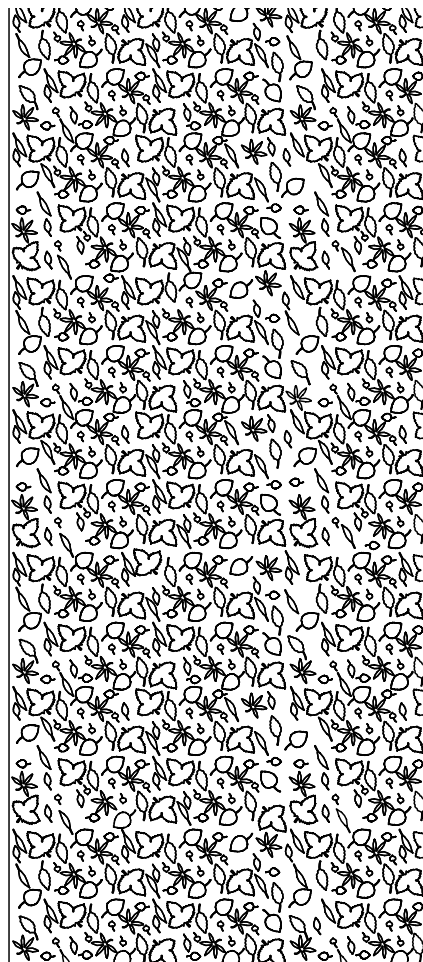
1/2" safety tempered architectural decorative laminated clear or starphire glass with innerlayer design. Unique and easy to maintain. All our doors can be Swing, Pocket or Sliding. Available in over 350 designs.



[GLASS DOOR "WAVES HORIZONTAL"]

Available in 3/8" and 1/2" safety tempered satin glass made out of aluminum oxide, with carved lines in vertical or horizontal mode. All our doors can be Swing, Pocket or Sliding. Available in over 350 designs.





[GLASS DOOR "AUTUMN LEAVES"]

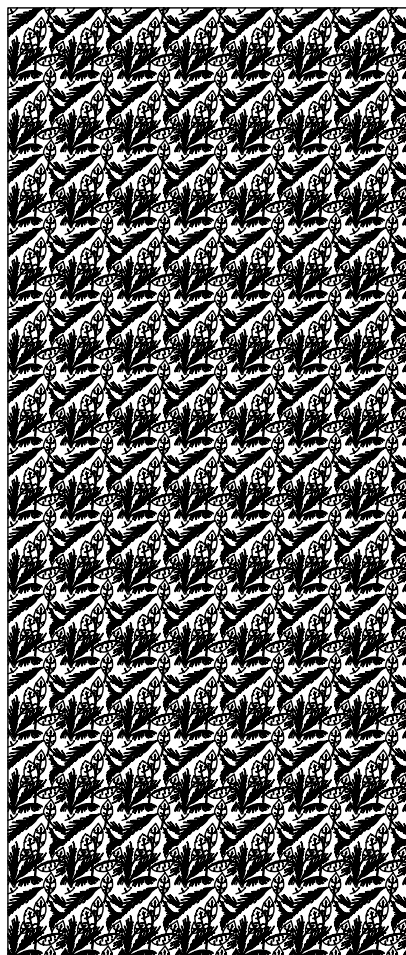
1/2" safety tempered architectural decorative laminated clear or extra-clear glass with innerlayer design. Uniquely made and easy to maintain. All our doors can be Swing, Pocket or Sliding. Available in over 350 designs.



[GLASS DOOR "SWIRLS"]

1/2" safety tempered architectural decorative laminated clear or extra-clear glass with innerlayer design. Uniquely made and easy to maintain. All our doors can be Swing, Pocket or Sliding. Available in over 350 designs.





[GLASS DOOR "TROPICAL LEAVES"]

1/2" safety tempered architectural decorative laminated clear or extra-clear glass with inner layer design. Uniquely made and easy to maintain. All our doors can be Swing, Pocket or Sliding. Available in over 350 designs.



[GLASS DOOR "FESTIVAL"]

Available in 3/8" and 1/2" safety tempered clear or starphire glass. You can have the design on a negative or positive image. Satin is made out of aluminum oxide leaving no finger prints on glass. All our doors can be Swing, Pocket, or Sliding. Available in over 350 designs.



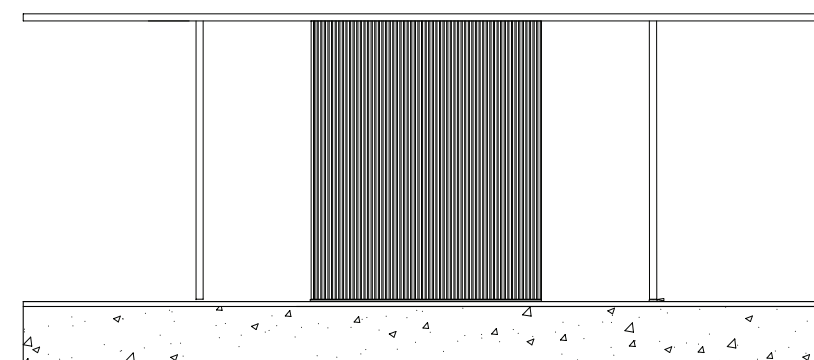
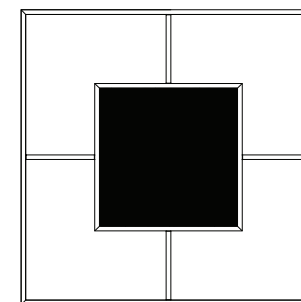


[GLASS FURNITURE]



[DINNING TABLE]

Dining table with glass and stainless steel lighting inside satin glass cube.

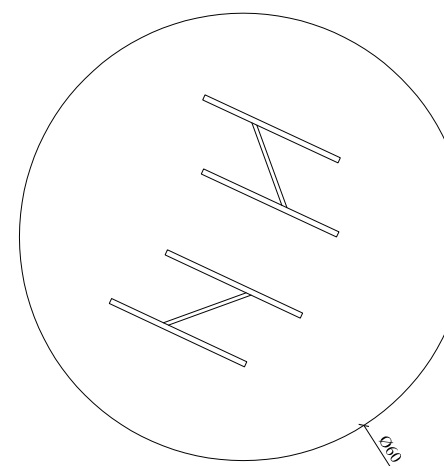
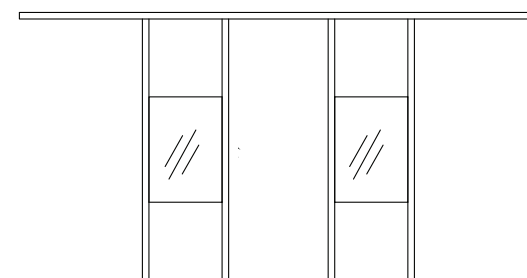




[GLASS FURNITURE]

GLASS BASES

1/2" clear glass base with Square floating on the air in 45 degree angle cut. To be used with any glass table top.





[GLASS FURNITURE]

TABLE TOP

3/4" Glass with satin design. Additional designs available. [left]

COFFE TABLE

Laminated White Glass with Satin Glass Legs. Custom made sizes. [below]



[GLASS FURNITURE]

TABLE TOP

3/4" Laminated Glass with different tridimensional blues lines. Available in other sizes. [left]

TABLE TOP

1" Laminated Starphire Glass with white inner layer. Available in other sizes and various colors. [below]





[FLEXTECH GLASS WINE RACK]

We can make any self supportive curved and straight cabinetry display made using our new pat pend. Flextech Bracket System.

The display unit showcased is for the wine industry. This can be made in any configuration possible, as well as with closed or open display. The potential is enormous. Since we use our Flexctech heads you can make the front or the back using curved glass and it would work perfectly.

Our new wine collection fine accessories are made out of brushed stainless steel and artistic 1/2" fully tempered glass. Holds up to 40 bottles, available in all clear or with partial or full etched design, chosen from Glass & Glass or it can be made with design custom made. Cooling System optional.



[OUR CLIENTS]

COMMERCIAL INSTALLATIONS

Ritz Carlton [EL Cairo, Egypt]
 Ritz Carlton (GREEN), Charlotte [North Carolina, USA]
 Ritz Carlton, Key Biscayne [Florida, USA]
 Ritz Carlton, Miami Beach [Florida, USA]
 Marriot [Shanghai, China]
 Carnival Cruises, New Ship 2010 [Trieste, Italy]
 Four Seasons Residences, Miami [Florida, USA]
 Four Seasons Hotel, Miami [Florida, USA]
 South on Fifth Residences, Miami Beach [Florida, USA]
 American Airlines/Flagship Lounge, MIA, Miami [Florida, USA]
 Carnival Cruiselines Headquarters, Miami [Florida, USA]
 Mandarin Hotel, Miami [Florida, USA]
 Marriot Hotels [USA]
 Sender, Tragash & Alvarino Associates [Florida, USA]
 110 Tower Night Club [Florida, USA]
 Bal Harbour Towers Common Areas, Bal Harbour [Florida, USA]
 Charcoal Restaurant 1, Miami [Florida, USA]
 Charcoal Restaurant 2, Ft. Lauderdale [Florida, USA]
 Crystal Boutique, Nassau [Bahamas]
 Divi's Hotel, Nassau [Bahamas]
 Facade Night Club [Florida, USA]
 Festa Restaurant [Florida, USA]
 First Impressions [Florida, USA]
 Gulf Stream Park Clubhouse Restaurant, Hallandale [Florida, USA]
 Hialeah Park Racetrack [Florida, USA]
 Lancome/Guy Laroche/Ralph Lauren [Curacao]
 Let It Ride, Motion Picture Set, Richard Dreyfuss [Florida, USA]
 Mezzanote Restaurant, Miami [Florida, USA]
 Molini South, DCOTA, Dania [Florida, USA]
 RCCL Cruiselines, Song of Norway, [Florida, USA]
 Riverparc Hotel, Miami [Florida USA]
 StringFellow's Club, Beverly Hills [California, USA]
 The Forge Restaurant, Miami Beach [Florida, USA]
 Carnival Cruiselines, Miami [Florida, USA]
 Mirage Entertainment Club [Jamaica]
 Marqui's Hotel, Mexico City [Mexico]
 Adrian Investments, Miami [Florida, USA]
 Reel Deel Yachts [Florida, USA]
 Rock Enterprises [Miami, Florida, USA]
 Ramiros Restaurant, Coral Gables [Florida, USA]
 Café Sci Sci, Coconut Grove [Florida, USA]
 Café Abracci, Coral Gables [Florida, USA]
 Sandals [Jamaica]

PRIVATE RESIDENCES

Silicon Valley, San Francisco [California, USA]
 Beverly Hills [California, USA]
 Coral Gables [Florida, USA]
 [Virginia, USA]
 Castle [Saudi Arabia]
 Fisher Island [Florida, USA]
 Mexico City, [Mexico]
 Miami [Florida, USA]
 Bal Harbor [Florida, USA]
 Santo Domingo [Dominican Republic]
 La Romana [Dominican Republic]
 Caracas [Venezuela]
 Cali [Columbia]
 Washington DC [USA]
 Vancouver [Canada]

ARCHITECTS AND
INTERIOR DESIGNERS

Frank Nicholson Partners [Florida, USA]
 Frank Nicholson Inc [Washington, USA]
 Fran Murphy Interiors [Florida, USA]
 Related Group [Florida, USA]
 Architectonica, Carlos Mata [Florida, USA]
 Antares [Florida, USA]
 Arcquiconceptors, Fernando Braveman [Mexico]
 Brown, Lopez & Brown, Architects, [Florida, USA]
 Carolyn Robbins, Interior Design [Florida, USA]
 Carol Seiger Wakefield, Designer [Florida, USA]
 Celia Pinto, ISID, NHFL [Florida, USA]
 Dante Designers [New Jersey, USA]
 Diane Deen, Interior Design [Florida, USA]
 Diane Sepler, Interior Design [Florida, USA]
 Jan Jones, ASID, West Palm Beach [Florida, USA]
 Janelle Foster, ASID, West Palm Beach [Florida, USA]
 James Whitehead, Interior Design, Nassau [Bahamas]
 James Deen, AIA [Florida, USA]
 Jim Lozoskie, Architect, Reston [Virgin Islands]
 J.J. Barreto, Architect, Cali [Colombia]
 Diane Joyce [Florida, USA]
 Lorraine Bragg, ASID [Florida, USA]
 Mitch Mason, ASID, West Palm Beach [Florida, USA]
 Mary Alice Kubitt – ASID [Florida, USA]
 Morris/Powell Associates [Florida, USA]
 Ralph Acevedo, IFDA [Florida, USA]
 Ralph Plurne, ISID [Florida, USA]
 Rita Rochkind, ISID, OG [Florida, USA]
 Suzanne Martinson, AIA [Florida, USA]
 Seiger & Associates [Florida, USA]
 Smith, Palm Beach [Florida, USA]
 Skaf/Elias, Interior Construction [Florida, USA]
 Susana Holt, Artist, Designer, London [England]

DESIGNER SHOWROOMS

Frank Murphy, Juno Beach [Florida, USA]
 E G Cody [Florida, USA]
 Thomas & Co., Scottsdale [Arizona, USA]
 Lynn Hastings, Pine Hurst [North Carolina, USA]
 Lopez-Mata Architects, Coral Gables [Florida, USA]
 A. Quality Custom Furniture [Florida, USA]
 Batty M.,Inc., Chicago [Illinois, USA]
 Casa Bique, Thomasville [North Carolina, USA]
 Charlotte Design Showroom, Charlotte [N. Carolina, USA]
 Creations at Dallas, Dallas [Texas, USA]
 Classics at CBI, Dallas [Texas, USA]
 Pillie, Inc., Houston [Texas, USA]
 Perla Lichi [Florida, USA]
 Design Direct-Dallas, Dallas [Texas, USA]
 Design 2000, Princeton [West Virginia, USA]
 Fine Furnishing [Georgia, USA]
 Mary Alice Kubitt, Coral Gables [Florida, USA]
 Lopez Negro, Dania [Florida, USA]
 Myra & Co., Miami [Florida, USA]
 Mirage Furniture [Florida, USA]
 Marvin Marks [Texas, USA]
 Molini South, Dania [Florida, USA]
 Piedras, Miami [Florida, USA]
 Pacific Showrooms, San Francisco [California, USA]
 Baldinger Lighting, New York [New York, USA]

PROJECTS WITH
CONSTRUCTION COMPANIES

Aqua Hotel and Spa, Turner Construction [USA]
 Mellon Bank, Turner Construction [USA]
 Continuum Condo, Turner Construction [USA]
 Ritz Carlton Puerto Rico, Turner Construction [USA]
 Latitude on the River, Suffilk Construction [USA]
 Four Seasons Residences Main Lobby, Bovis Lend Lease [USA]
 Ten Museum Park Condo, Bovis Lend Lease [USA]
 Ritz Carlton Miami Beach, Coastal Construction [USA]
 Ritz Carlton Charlotte, RT Dooley [USA]
 Ritz Carlton Key Biscayne, CDC Construction [USA]

[FREQUENTLY ASKED QUESTIONS]

DO YOU SHIP YOUR WORK ANYWHERE?

Yes, we can fabricate your item and ship it directly to you. Contact us for more information.

HOW DO I GET IN TOUCH WITH YOU?

You can contact us several ways. You can Call at 305.416.5001, E-mail us at info@glassandglass.com send us a sample or quote request at www.glassandglass.com or Fax us at 305.416.5010.

DO YOU ALSO INSTALL YOUR WORK?

Yes we both fabricate and install our work. We have engineer supervisors, glass and glazing experts in the field to do the installation or supervise local hired installation, and we provide engineered signed and sealed shop drawings. All types of import and export available. Contact us for further information.

WHAT IS YOUR TURNAROUND TIME?

Our turnaround time varies depending on the type of product requested and the size of the project. After we receive all the architectural drawings and details needed, we can provide accurate turnaround times.

IS YOUR WORK GUARANTEED?

Yes, we stand behind our work. With our engineering capabilities and following the strictest building codes, we help the architects and designers to achieve their vision by transforming their concept to a reality. Details will be given at the consultation.





[USA
T 305.416.5001
F 305.416.5010
info@glassandglass.com
www.glassandglass.com]

