

# PLASTIC CHANGEABLE LETTERS

**Educational Equipment** has the largest assortment of plastic changeable directory letters in the industry. Our large variety of type styles & special characters along with our unique ability sell individual letters gives you the greatest flexibility in meeting your signage needs.

**To Order Please Specify:**

- 1) Type Style: Gothic Block, Helvetica, or Roman Art.
- 2) Size: See type style description.
- 3) Assortment: As required - 100-200 etc. - see chart.
- 4) Individual Characters: Submit a complete list with quantity for each.
- 5) Color

**Color Size and Availability**

**Roman Art**

Pure White & Black

1/4", 3/8", 1/2", 3/4", 1", 1 1/2", 2" & 3"

**Gothic Block**

Pure White & Black

3/8", 1/2", 3/4", 1", 1 1/2" & 2"

**Helvetica**

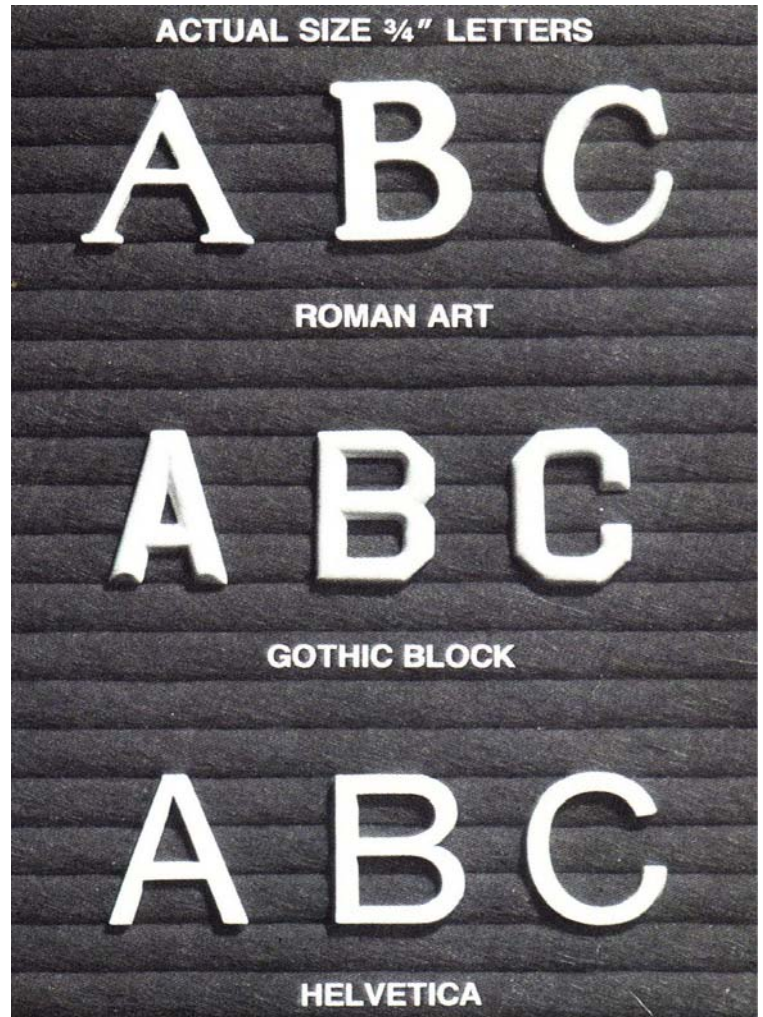
Pure White & Black

3/8", 1/2", 3/4", & 1"

**Alignment Tabs on Letters:**

1/4" & 3/8" Tabs on the bottom of the letters only.

1/2" - 3" Tabs on both top and bottom for easier alignment.



Letter Assortment																														
Set Size	A	B	C	D	E	F	G	H	I	J	K	L	M	N	O	P	Q	R	S	T	U	V	W	X	Y	Z	.	,	&	0-9
100	5	3	3	3	6	3	3	3	4	1	2	3	3	3	5	3	1	4	5	4	3	2	3	1	2	1	1	1	1	2**
200	10	6	6	6	12	6	6	6	8	2	4	6	6	6	10	6	2	8	10	8	6	4	6	2	4	2	2	2	4	
300	15	9	9	9	18	9	9	9	12	3	6	9	9	9	15	9	3	12	15	12	9	6	9	3	6	3	3	3	6	
500	25	15	15	15	30	15	15	15	20	5	10	15	15	15	25	15	5	20	25	20	15	10	15	5	10	5	5	5	10	

\*\* Numbers 0 thru 9 - Quantity per each number.

Punctuation Assortment							
Set Size	-	/	!	?	.	,	;
100	5	5	5	5	30	30	20

**EDUCATIONAL  
EQUIPMENT** ■

845 OVERHOLT ROAD KENT, OHIO PH:330-673-4881

## COMPARTMENT BOXES

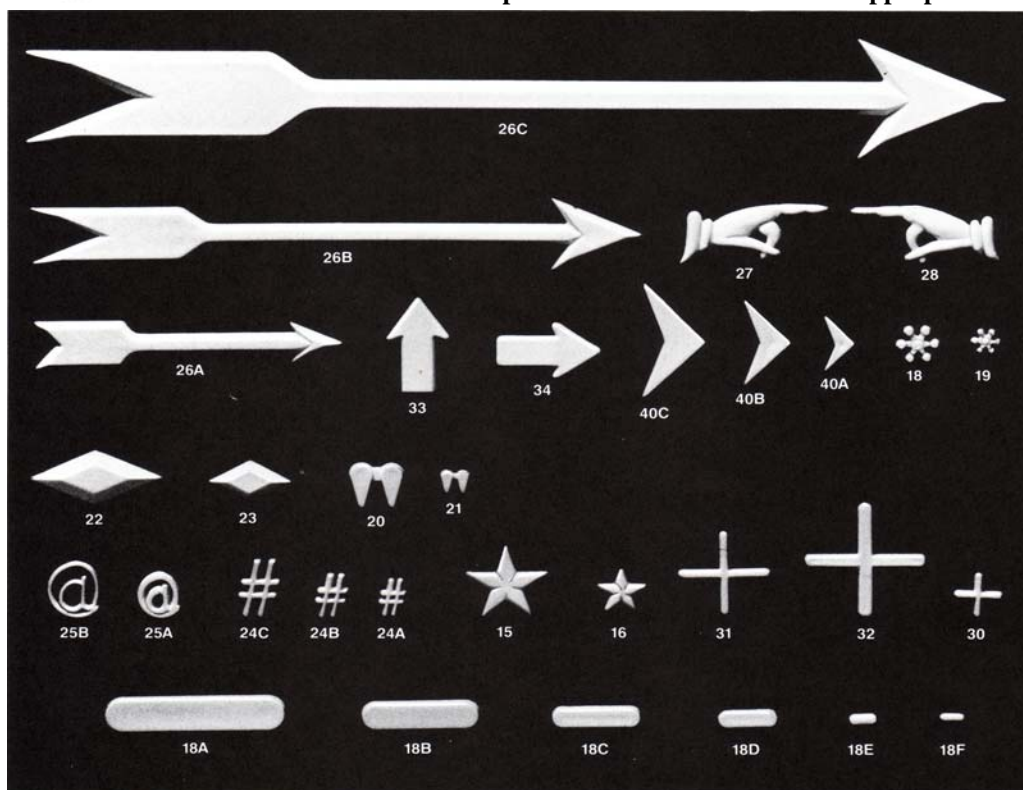


**MINI** - 9 <sup>13</sup>/<sub>16</sub>" X 13 <sup>3</sup>/<sub>8</sub>" X 1 <sup>1</sup>/<sub>2</sub>" W/35 COMPARTMENTS 1 <sup>3</sup>/<sub>4</sub>" X 1 <sup>3</sup>/<sub>4</sub>"

**LARGE** - 12 <sup>7</sup>/<sub>8</sub>" X 19 <sup>1</sup>/<sub>2</sub>" X 2 <sup>1</sup>/<sub>16</sub>" W/ 35 COMPARTMENTS 2 <sup>3</sup>/<sub>8</sub>" X 2 <sup>5</sup>/<sub>8</sub>"

**KING** - 17 <sup>1</sup>/<sub>8</sub>" X 23 <sup>7</sup>/<sub>8</sub>" X 3 <sup>1</sup>/<sub>16</sub>" W/35 COMPARTMENTS 3 <sup>1</sup>/<sub>4</sub>" X 3 <sup>3</sup>/<sub>16</sub>"

Storage boxes for letters and figures are designed for handy classification and easy accessibility for stores letters and figures. Made of sturdy cardboard and compartmentalized for quick selection. The mini and large box compartments are labeled with the appropriate letter or symbol.



**Roman Art    Gothic Block    Helvetica**

Question Marks	?	**		
Percent Signs	%	**		
Cent Signs	¢	**	**	**
Dollar Signs	\$	**	**	**
Diagonals	/	**		
Exclamation Marks	!	**		
Pound Signs	#	**		
Plus Signs	+	**		

\*\* = Available all sizes, all colors

### All Other Designs

Fractions - <sup>1</sup> / <sub>4</sub> , <sup>1</sup> / <sub>2</sub> , and <sup>3</sup> / <sub>4</sub>	Small <sup>1</sup> / <sub>2</sub> " High
Roman Art Only, All Colors	Large <sup>5</sup> / <sub>8</sub> " High
Horizontal Divider <sup>1</sup> / <sub>4</sub> " X 21" Black Only	
Horizontal Divider <sup>1</sup> / <sub>16</sub> " X 21" Pure White Only	

All individual letter pricing is non-cumulative.

Shipping & Handling:

~Orders less than \$100 ~ \$7.95

~\$100 and over will be invoiced at the actual rate.

All prices: US Dollars, FOB, Kent, Ohio

All orders subject to a \$30.00 min. order charge.

**EDUCATIONAL  
EQUIPMENT** ■

845 OVERHOLT ROAD KENT, OHIO PH:330-673-4881