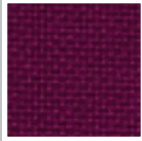


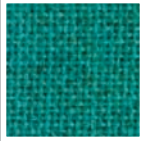
STOCKED FABRICS



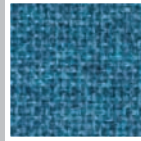
Bone 748



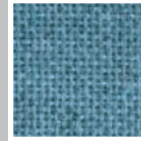
Deep Burgandy 556



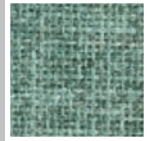
Aquamarine 381



Wedgewood 150



Crystal Blue 175



Grey Mix 238



Quartz 380



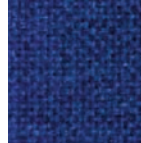
Cherry Neutral 400



Verte Papier 561



Lake 756



Baltic 153



Opal 394



Wheat 130



Pearl 481



Eucalyptus 468



Bayberry 486



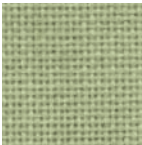
Blue Neutral 401



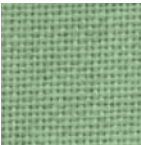
Silver Papier 538



Desert Sand 758



Dune 749



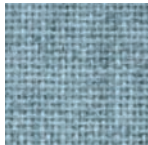
Stream 757



Ultramarine 470



Lavender Neutral 405



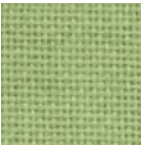
Blue Papier 439



Vanilla Neutral 403



Light Moss 754



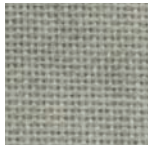
Leaf 755



Lilac 752



Rose Quartz 390



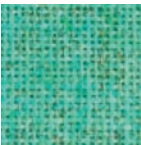
Cement mix 750



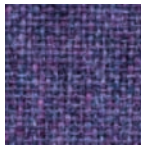
Buff 460



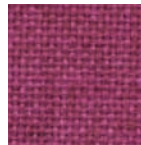
Apricot Neutral 404



Green Neutral 402



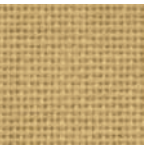
Amethyst 424



Sienna 475



Silver Neutral 406



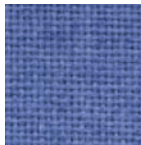
Straw 747



Pumice 423



Chrome Green 549



Violet 753



Bronze 545



Medium Grey 298



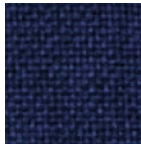
Terra 751



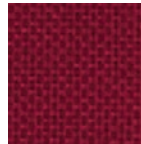
Cinnabar 422



Blue Spruce 467



Blue Plum 553



Claret Accent 418



Black 408

Fabric rolls stocked in 52" widths



SPECIFICATIONS FR 701

| | |
|----------|-------------------------|
| PATTERN | 2100 |
| CONTENTS | 100% RECYCLED POLYESTER |
| WEIGHT | 16.0 ± 0.5 Oz./Lin. Yd. |
| WIDTH | 66" min useable |
| REPEAT | None |

| | |
|---------------|--|
| CLEANING CODE | W-S |
| | Fabric may be cleaned with mild, water-free solvents or water-based cleaning agents or foam. |

| | |
|-------------------------------------|--|
| PERFORMANCE | |
| Breaking Strength (ASTM D 5034) | 150 Lbs. Min. -Warp and Fill |
| Tear (ASTM D 2261) | 30 Lbs. Min. - Warp and Fill |
| Moisture Regain (ASTM D 2654) | 0.5% Max. |
| Colorfastness to light (AATCC 16E) | 40 Hrs. min |
| Colorfastness to crocking (AATCC 8) | Class 4 Min. - Dry Class 3 Min. - Wet |

| | |
|--------------|--------------|
| FLAMMABILITY | |
| ASTM E-84 | Class 1 or A |

| | |
|------------------------|--|
| ACOUSTICAL PERFORMANCE | |
| ASTM C423-90A | The net change in Noise Reduction Coefficient (NRC) when an acoustical panel is covered ranges from NRC 0.00 to 0.05 |

100% RECYCLED MATERIAL USING INCREASINGLY SUSTAINABLE MANUFACTURING PRACTICES TO PRODUCE A HIGH QUALITY PRODUCT THAT IS RECYCLABLE AT THE END OF ITS USEFUL LIFE.

FR 701 ° IS INCLUDED IN THE UNDERWRITERS LABORATORY PANEL FABRIC RECOGNITION PROGRAM. ADDITIONAL TESTING OF THE U.L RECOGNIZED COMPONENT FABRIC IS NOT REQUIRED ON APPROVED PANELS FROM PARTICIPATING MANUFACTURERS.

COLORS MAY VARY SLIGHTLY BETWEEN DYE LOTS. APPLICATION TESTING OF THIS PRODUCT IS RECOMMENDED. FR701 ° IS A REGISTERED TRADEMARK OF GUILFORD OF MAINE.

THIS SAMPLE IS REPRESENTATIVE OF THE FINISHED COLOR TO BE SUPPLIED AND MAY NOT INDICATE AN EXACT MATCH. WHILE EVERY EFFORT IS MADE TO MATCH THIS COLOR TO A MASTER SAMPLE, SOME VARIATION MAY OCCUR. WE DO NOT RECOMMEND THAT YOU SPECIFY FROM THIS CARD AND CANNOT BE RESPONSIBLE FOR VARIATIONS IN SHADE BETWEEN THIS PRINTED CARD AND ACTUAL FABRIC.