



appliance specifications

A new line of premium appliances from Electrolux

Electrolux appliances have been used in fine European homes and restaurants for over 80 years. Now, Electrolux brings that same level of uncompromising quality to North America with its luxury kitchen and laundry collections. At last, European design within reach!



Electrolux

signature features

Wall Ovens / Ranges

- Wave-Touch™ Controls
- Luxury-Glide® Oven Racks
- Perfect Convection®
- Luxury-Design™ Lighting
- Luxury-Hold™ Door
- Sure-2-Fit™ Capacity
- Perfect Turkey® Button
- Convection Conversion

Wall Ovens

- Hidden Bake Element
- Extra-Large Glass Window
- Signature Cobalt Blue Interior
- Signature Soft-Arc Oven Door and Handle Design

Warmer Drawers

- Perfect Set® Controls
- Luxury-Glide® Drawer
- Humidity Controls

Electric Ranges

- Wave-Touch™ Controls
- Perfect Set® Element Controls
- Perfect Pair™ Ovens
- Flex-2-Fit® Ceramic Glass Smoothtop

Gas Ranges

- Wave-Touch™ Controls
- Min-2-Max™ Burners
- Extra-Large Glass Window
- Warmer Drawer
- Continuous Grates with Deep-Well Top

Microwaves

- Wave-Touch™ Controls
- IQ-Touch™ Controls
- Cook-2-Perfection™
- High-Performance Power
- Premium Sensor Cooking

Available on select models

Drop into our virtual kitchen or laundry room.
Go to electroluxappliances.com

Colors:



Stainless (S)



White (W)



Black (B)

	Overall Dimensions (H x W x D)	Cutout Dimensions (H x W x D)
EW30EW65G*	50-7/16" x 30" x 24-1/2"	48-7/8" x 28-1/2" x 23-1/2" min. 49-1/8" x 29" x 23-1/2" max.
EW30EW55G*	29" x 30" x 24-1/2"	27-1/4" x 28-1/2" x 23-1/2" min. 27-5/8" x 29" x 23-1/2" max.
EW27EW65G*	50-7/16" x 27" x 24-1/2"	48-7/8" x 24-7/8" x 23-1/2" min. 49-1/8" x 25-1/4" x 23-1/2" max.
EW27EW55G*	29" x 27" x 24-1/2"	27-1/4" x 24-7/8" x 23-1/2" min. 27-5/8" x 25-1/4" x 23-1/2" max.
EW30WD55G	11-1/4" x 30" x 26-5/8"	9-7/8" x 28-1/2" x 23-5/8" min. 10-1/4" x 28-3/4" x 24" max.
EW27WD55G	11-1/4" x 27" x 26-5/8"	9-7/8" x 25-1/2" x 23-5/8" min. 10-1/4" x 25-3/4" x 24" max.
EW30DS65G	36-7/16" - 37-7/16" x 31-1/2" x 28-5/16"	35-3/4" x 29-15/16" x 24" min. 36-5/8" x 30-1/16" x 24" max.
EW30ES65G	36-7/16" - 37-7/16" x 31-1/2" x 28-5/16"	35-3/4" x 29-15/16" x 24" min. 36-5/8" x 30-1/16" x 24" max.
EW30GS65G	36-7/16" - 37-7/16" x 31-1/2" x 28-5/16"	35-3/4" x 29-15/16" x 24" min. 36-5/8" x 30-1/16" x 24" max.
EW30MO55H	22-1/4" x 30" x 22-11/16"	21" x 27-5/8" x 20-1/8" min. 21-1/2" x 28-1/8" x 20-1/8" max.
EW27MO55H	22-1/4" x 27" x 22-11/16"	21" x 25-1/8" x 20-1/8" min. 21-1/2" x 25-5/8" x 20-1/8" max.
EI24MO45I**	18-1/16" x 27" or 30" x 20-1/16"	16-1/4" x 25-1/4" x 20" min. 21-1/2" x 25-1/8" x 20" max.
EI30MO45G	18-1/16" x 30" x 20-1/16"	16-1/4" x 25-1/4" x 20" min. 16-3/8" x 25-3/8" x 20" max.
EI27MO45G	18-1/16" x 27" x 20-1/16"	16-1/4" x 25-1/4" x 20" min. 16-3/8" x 25-3/8" x 20" max.
EI30BM55H	17-1/16" x 29-15/16" x 15-3/4"	15-1/2" x 30" x 12" min. 15-1/2" x 30" x 14" max.
EI30MH55G	17-1/16" x 29-15/16" x 16-5/32"	15-1/2" x 30" x 12" min.

*Our Electric Wall Ovens are Star-K® Kosher Certified. Your assurance that select models contain such features as the Sabbath mode in keeping with kosher cooking practices.

**30" or 27" Trim Kit is required and ordered by individual part number (available in 3 colors) and includes Bottom Duct Assembly - shipped in separate box. Specifications subject to change.

NOTE: Always consult local and national electric and gas codes. For planning purposes only. Refer to Product Installation Guide on the web at electroluxappliances.com for detailed instructions. Specifications subject to change.

electric wall ovens



EW30EW65G (S/W/B)
30" ELECTRIC
DOUBLE WALL OVEN



EW30EW55G (S/W/B)
30" ELECTRIC
SINGLE WALL OVEN



EW27EW65G (S/W/B)
27" ELECTRIC
DOUBLE WALL OVEN



EW27EW55G (S/W/B)
27" ELECTRIC
SINGLE WALL OVEN

warmer drawers



EW30WD55G (S)
30" WARMER DRAWER



EW27WD55G (S)
27" WARMER DRAWER

ranges



EW30DS65G (S/W/B)
30" DUAL-FUEL
BUILT-IN RANGE



EW30ES65G (S/W/B)
30" ELECTRIC
SMOOTHTOP
BUILT-IN RANGE



EW30GS65G (S/W/B)
30" GAS
BUILT-IN RANGE

microwaves



EW30MO55H (S)
EW27MO55H (S)
BUILT-IN MICROWAVE



EI30MO45G (S)
EI27MO45G (S)
BUILT-IN MICROWAVE



EI24MO45I (B)
BUILT-IN MICROWAVE
(S/W/B Trim Kits available)



EI30BM55H (S/W/B/Z¹)
OTR MICROWAVE



EI30MH55G (S/W/B/Z¹)
OTR MICROWAVE

otr microwaves

¹Left-Swing Door



Electrolux

signature features

Induction Cooktops

- Flex-2-Fit® Elements
- Perfect Set® Controls
- 10" and 6" Induction Elements
- Power Assist™ Function
- Exceptional Temperature Control
- Signature Blue LED Display
- Star-K® Certified

Electric Cooktops

- Glide-2-Set™ Control Panel
- Flex-2-Fit® Elements
- Signature Blue LED Display
- Star-K® Certified

Gas Cooktops

- Min-2-Max™ Burners
- Cook Surface Sensors
- Deep-Well Design
- Professional-Grade Control Knobs
- Continuous Grates

Freestanding Ranges

- Wave-Touch™ Controls
- Min-2-Max™ Burners (Gas Only)
- Flex-2-Fit® Elements (Electric Only)
- Continuous Grates with Deep-Well Top (Gas Only)
- Perfect Pair™ Ovens
- Luxury-Glide® Oven Racks
- Perfect Convection®
- Convection Conversion
- Luxury-Design™ Lighting
- Luxury-Hold™ Door
- Sure-2-Fit™ Capacity
- Perfect Turkey® Button
- Star-K® Certified

Available on select models

Drop into our virtual kitchen or laundry room.
Go to electroluxappliances.com

Colors:



Stainless (S)



White (W)



Black (B)

	Overall Dimensions (H x W x D)	Cutout Dimensions (H x W x D)
EW36IC60I	2-1/2" x 36-3/4" x 21-3/4"	8-1/2" x 36" x 20-3/8" min. 8-1/2" x 36-1/4" x 20-1/2" max.
EW30IC60I	2-1/2" x 28-5/8" x 21-3/4"	8-1/2" x 29-3/4" x 20-3/8" min. 8-1/2" x 30" x 20-1/2" max.
EW36CC55G	6-1/2" x 36-3/4" x 21-3/4"	8-1/2" x 36" x 20-3/8" min. 8-1/2" x 36-1/4" x 20-1/2" max.
EW30CC55G	6-1/2" x 30-3/4" x 21-3/4"	8-1/2" x 29-3/4" x 20-3/8" min. 8-1/2" x 30" x 20-1/2" max.
EW30GC60I	4-1/2" x 27" x 21-3/4"	8" x 27" x 19-1/8" min. 8" x 28-1/2" x 19-3/4" max.
EW36GC55G	4-1/4" x 36" x 21-3/4"	8" x 33-7/8" x 19-1/8" min. 8" x 34-1/4" x 19-3/4" max.
EW30GC55G	4-1/4" x 30" x 21-3/4"	8" x 27-1/4" x 19-1/8" min. 8" x 28-1/2" x 19-3/4" max.
EW36EC55G	7" x 36-3/4" x 21-3/4"	9" x 35-3/4" x 20-3/8" min. 9" x 36" x 20-5/8" max.
EW30EC55G	7" x 30-3/4" x 21-3/4"	9" x 29-3/4" x 20-3/8" min. 9" x 30" x 20-5/8" max.
EW30DF65G	48-1/2" x 30" x 29-1/4"	36" x 30" x 24" min.
EW3LDF65G	48-1/2" x 30" x 29-1/4"	36" x 30" x 24" min.
EW30EF65G	48-1/2" x 30" x 29-1/4"	36" x 30" x 24" min.
EW30GF65G	48-1/2" x 30" x 29-1/4"	36" x 30" x 24" min.
EW3LGF65G	48-1/2" x 30" x 29-1/4"	36" x 30" x 24" min.

NOTE: Always consult local and national electric and gas codes. For planning purposes only. Refer to Product Installation Guide on the web at electroluxappliances.com for detailed instructions. Specifications subject to change.

induction & electric cooktops

11 31 00/ELD
BuyLine 8905



EW36IC60I (S/B)
EW30IC60I (S/B)
36" & 30"
INDUCTION COOKTOP



EW36CC55G (S/W/B)
EW30CC55G (S/W/B)
36" & 30" INDUCTION
HYBRID COOKTOP



EW36EC55G (S/W/B)
EW30EC55G (S/W/B)
36" & 30"
ELECTRIC COOKTOP

gas cooktops



EW30GC60I (S)
30" GAS COOKTOP



EW36GC55G (S/W/B)
36" GAS COOKTOP



EW30GC55G (S/W/B)
30" GAS COOKTOP

dual-fuel & electric freestanding ranges



EW30DF65G (S/W/B)
30" DUAL-FUEL
FREESTANDING RANGE



**EW3LDF65G
(LP Gas Only) (S/W/B)**
30" DUAL-FUEL
FREESTANDING RANGE



EW30EF65G (S/W/B)
30" ELECTRIC SMOOTHTOP
FREESTANDING RANGE

gas freestanding ranges



EW30GF65G (S/W/B)
30" GAS
FREESTANDING RANGE



EW3LGF65G (LP Gas Only) (S/W/B)
30" GAS
FREESTANDING RANGE



Electrolux

signature features

Wall-Mount & Island Hoods

- Dual-Centrifugal Fans
- Halogen Lighting
- Stainless Steel Construction
- Stainless Steel Filters
- Convenient Timers
- Optional Ductless Ventilation
- LCD Electronic Controls

Downdraft Vents

- Infinite-Speed Blower
- Dishwasher Safe Stainless Steel Filters
- External Exhaust Duct

Under-Cabinet Hoods

- Stainless Steel Construction
- 4-Speed Fan
- Dual Halogen Lights
- LCD Electronic Controls

	Overall Dimensions <small>(H x W x D)</small>
RH36WCT6G	16-1/2" x 35-7/16" x 19-11/16" min. 36" x 35-7/16" x 19-11/16" max.
RH36WC60G	29-7/16" x 35-7/8" x 19-11/16" min. 54-9/16" x 35-7/8" x 19-11/16" max.
RH30WC60G	29-7/16" x 29-7/8" x 19-11/16" min. 54-9/16" x 29-7/8" x 19-11/16" max.
RH36WC55G	24" x 35-7/8" x 19-11/16" min. 42-9/16" x 35-7/8" x 19-11/16" max.
RH30WC55G	24" x 29-7/8" x 19-11/16" min. 42-9/16" x 29-7/8" x 19-11/16" max.
RH42PC60G	28" x 41-7/8" x 25-3/16" min. 57" x 41-7/8" x 25-3/16" max.
RH36PC60G	28" x 35-7/8" x 25-3/16" min. 57" x 35-7/8" x 25-3/16" max.
E36DD75ES	40" x 36" x 3-27/32" (Including 10" Rise)
E30DD75ES	40" x 30" x 3-27/32" (Including 10" Rise)
PL36DD50E	29-1/2" x 36" x 7" (Including 7" Rise)
PL30DD50E	29-1/2" x 30" x 7" (Including 7" Rise)
RH36WC40G	4-3/4" x 35-7/8" x 20"
RH30WC40G	4-3/4" x 29-7/8" x 20"

NOTE: Always consult local and national electric and gas codes. For planning purposes only. Refer to Product Installation Guide on the web at electroluxappliances.com for detailed instructions. Specifications subject to change.

Available on select models

**Drop into our virtual kitchen or laundry room.
Go to electroluxappliances.com**

Colors:

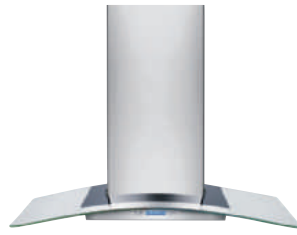


Stainless (S)

wall-mount hoods



RH36WCT6G (S) (36")
GLASS CANOPY
WALL-MOUNT HOOD

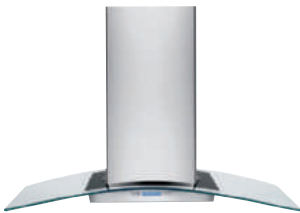


RH36WC60G (S) (36")
RH30WC60G (S) (30")
GLASS CANOPY
WALL-MOUNT HOOD



RH36WC55G (S) (36")
RH30WC55G (S) (30")
CHIMNEY WALL-MOUNT HOOD

island hoods



RH42PC60G (S) (42")
RH36PC60G (S) (36")
GLASS CANOPY ISLAND HOOD

downdraft vents



E36DD75ES (S) (36")
E30DD75ES (S) (30")
DOWNDRAFT VENT



PL36DD50E (C) (36")
PL30DD50E (C) (30")
DOWNDRAFT VENT

under-cabinet hoods



RH36WC40G (S) (36")
RH30WC40G (S) (30")
UNDER-CABINET HOOD

signature features

Refrigerators

- Wave-Touch™ Controls
- IQ-Touch™ Controls
- Perfect Ice™ & Fast Freeze™ Options
- Alarm Systems
- Perfect Set® Temperature Controls
- 9" Tall Water/Ice Dispenser
- PureAdvantage® Water & Air Filtration System
- Luxury-Design™ Lighting
- Luxury-Glide® Crispers
- PerfectTemp Drawer™ (Wave-Touch™ Only)
- Chill Zone™ Drawer (IQ-Touch™ Only)
- Luxury-Design™ Glass Shelves
- Energy-Saving Vacation Mode
- Full-Extension Freezer Baskets
- Star-K® Certified
- ENERGY STAR®-Qualified



	Overall Dimensions (H x W x D)	Cutout Dimensions (H x W x D)
EW23BC71I	69-1/2" x 35-5/8" x 28-3/16"	70-1/4" x 36" x 25" min.
EI23BC56I	69-1/2" x 35-5/8" x 28-3/16"	70-1/4" x 36" x 25" min.
EI23BC36I	69-1/2" x 35-5/8" x 28-3/16"	70-1/4" x 36" x 25" min.
EI23BC51I	69-1/2" x 35-5/8" x 28-3/16"	70-1/4" x 36" x 25" min.
EW28BS71I	69-1/2" x 35-5/8" x 33"	70-1/4" x 36" x 28-7/8" min.
EI28BS56I	69-1/2" x 35-5/8" x 33"	70-1/4" x 36" x 28-7/8" min.
EI28BS36I	69-1/2" x 35-5/8" x 33"	70-1/4" x 36" x 28-7/8" min.
EI28BS51I	69-1/2" x 35-5/8" x 33"	70-1/4" x 36" x 28-7/8" min.
EW23CS70I	69-1/2" x 35-5/8" x 28-3/16"	70-1/4" x 36" x 25" min.
EW23CS65G	69-1/2" x 35-5/8" x 28-3/16"	70-1/4" x 36" x 25" min.
EI23CS55G	69-1/2" x 35-5/8" x 28-3/16"	70-1/4" x 36" x 25" min.
EW26SS70I	69-1/2" x 35-5/8" x 33"	70-1/4" x 36" x 28-7/8" min.
EW26SS65G	69-1/2" x 35-5/8" x 33"	70-1/4" x 36" x 28-7/8" min.
EI26SS55G	69-1/2" x 35-5/8" x 33"	70-1/4" x 36" x 28-7/8" min.
EW23SS65H	69-1/2" x 32-5/8" x 33"	70-1/4" x 33" x 28-7/8" min.
EI23SS55H	69-1/2" x 32-5/8" x 33"	70-1/4" x 33" x 28-7/8" min.

NOTE: Always consult local and / or national electric and gas codes. For planning purposes only. Refer to Product Installation Guide on the web at electroluxappliances.com for detailed instructions. Specifications subject to change.

Available on select models

**Drop into our virtual kitchen or laundry room.
Go to electroluxappliances.com**

Colors:



Stainless (S)



White (W)



Black (B)

counter-depth refrigerators



EW23BC711¹ (S/W/B)
EI23BC561² (S/W/B)
23 CU. FT.
FRENCH DOOR
REFRIGERATOR



EI23BC361² (S/W/B)
EI23BC511² (S/W/B)
23 CU. FT.
FRENCH DOOR
REFRIGERATOR



EW23CS701¹ (S/W/B)
23 CU. FT.
REFRIGERATOR



EW23CS65G¹ (S/W/B)
EI23CS55G² (S/W/B)
23 CU. FT.
REFRIGERATOR

standard-depth refrigerators



EW28BS711¹ (S/W/B)
EI28BS561² (S/W/B)
28 CU. FT.
FRENCH DOOR
REFRIGERATOR



EI28BS361² (S/W/B)
EI28BS511² (S/W/B)
28 CU. FT.
FRENCH DOOR
REFRIGERATOR



EW26SS701¹ (S/W/B)
26 CU. FT.
REFRIGERATOR



EW26SS65G¹ (S/W/B)
EI26SS55G² (S/W/B)
26 CU. FT.
REFRIGERATOR



EW23SS65H¹ (S/W/B)
EI23SS55H² (S/W/B)
23 CU. FT.
REFRIGERATOR

¹Wave-Touch™ Controls
²IQ-Touch™ Controls

signature features

Kitchen Cleanup

- Wave-Touch™ Controls
- IQ-Touch™ Controls
- Quietest in its Class*
- Largest Usable Capacity**
- Luxury-Quiet™ Sound Package
- Sure-2-Fit™ Racking System
- Multiple Wash Cycles and Options
- Luxury-Hold™ Door
- Luxury-Dry™ Power Dry System
- Stainless Steel Interior
- AquaLux™ Wash System
- Auto Wash Feature

Under Counter

- Extra-Large Capacity
- High-Performance Power
- Luxury-Quiet™ System
- Luxury-Glide® System
- Luxury-Glide® Shelves
- Luxury-Design™ Lighting
- Luxury-Close™ Door
- Deodorizing System
- Multiple Storage Options
- Fully Integrated, Electronic Controls
- Perfect Set® Temperature Control
- Alarm System
- PureAdvantage® Air Filter
- Soft-Arc Door and Handle Design
- Versatile Installation Options
- Signature Styling
- Stylish Exterior
- UV-Filtered Glass Door
- Crystal-Clear Ice Cubes
- Optional Drain Pump
- Frost-Free Operation
- Low-Maintenance
- ENERGY STAR®-Qualified
- Energy-Saving Vacation Mode

Wine Tower

- Luxury-Design™ Lighting
- Perfect Set® Temperature Control
- Stable Humidity Level
- Exceptionally Quiet
- UV-Filtered Glass Door
- Wood Display Shelves
- Versatile Installation Options
- Energy-Saving Vacation Mode
- Signature Soft-Arc Door and Handle Design

*Based on published MSRP and specifications. Available on select models

**As measured by adjusted rack space
Available on select models

**Drop into our virtual kitchen or laundry room.
Go to electroluxappliances.com**

Colors:



Stainless (S)



White (W)



Black (B)



Panel Ready
(T)



	Overall Dimensions (H x W x D)	Cutout Dimensions (H x W x D)
EWDW6505G*	33-7/8" - 34-7/8" x 23-3/4" x 24-5/8"	34" x 24" x 24" min. 35" x 24" x 24" max.
EIDW6405H*	33-7/8" - 34-7/8" x 23-3/4" x 23-7/8"	34" x 24" x 24" min. 35" x 24" x 24" max.
EIDW6305G*	33-7/8" - 34-7/8" x 23-3/4" x 24-5/8"	34" x 24" x 24" min. 35" x 24" x 24" max.
EIDW6105G*	33-7/8" - 34-7/8" x 23-3/4" x 24-5/8"	34" x 24" x 24" min. 35" x 24" x 24" max.
EI15TC65H	34-3/8" - 35-3/8" x 14-7/8" x 21-1/2"	34-5/8" x 15" x 24" min.
EI24WC75H	75" - 76" x 23-1/2" x 27-1/2"	75-1/2" x 24-1/8" x 27" min.
EI24BC65G	34-5/8" - 35" x 23-13/16" x 24-1/4"	34-3/8" x 24-1/8" x 24" min.
EI24WC65G	34-5/16" - 35" x 23-13/16" x 24-1/4"	34-3/8" x 24-1/8" x 24" min.
EI24RD65H	34" - 35" x 23-13/16" x 24-1/4"	34-3/8" x 24-1/8" x 24" min.
EI15IM55G	34-1/8" - 35" x 14-15/16" x 24"	34-1/4" x 15-1/8" x 24" min.

*Height only adjustable to 34-11/16" max. when installed in 35" max. standard cabinetry cutout to allow for 5/16" min. clearance.

NOTE: Always consult local and / or national electric and gas codes. For planning purposes only. Refer to Product Installation Guide on the web at electroluxappliances.com for detailed instructions.

Specifications subject to change.

dishwashers



EWDW6505G (S/W/B)
WAVE-TOUCH™
BUILT-IN DISHWASHER



EIDW6405H (T)
IQ-TOUCH™
BUILT-IN
DISHWASHER
*Can accept custom panel
and handle.*



EIDW6305G (S/W/B)
IQ-TOUCH™
BUILT-IN
DISHWASHER



EIDW6105G (S/W/B)
IQ-TOUCH™
BUILT-IN
DISHWASHER

trash compactor



EI15TC65H (S)
IQ-TOUCH™
UNDER-COUNTER
TRASH COMPACTOR

wine tower / under counter



EI24WC75H (S)
IQ-TOUCH™
EUROPEAN TALL
WINE TOWER



EI24BC65G (S)
IQ-TOUCH™
UNDER-COUNTER
BEVERAGE CENTER



EI24WC65G (S)
IQ-TOUCH™
UNDER-COUNTER
WINE COOLER



EI24RD65H (S)
IQ-TOUCH™
UNDER-COUNTER
REFRIGERATOR
DRAWERS



EI15IM55G (S)
IQ-TOUCH™
UNDER-COUNTER
ICE MAKER

washers & dryers



Red Hot Red (RR)



Mediterranean Blue (MB)



Turquoise Sky (TS)



Silver Sands (SS)



Island White (IW)

Electrolux

signature features

Laundry

- Wave-Touch™ Controls
- IQ-Touch™ Controls
- Largest Usable Capacity*
- Luxury-Quiet™ Sound Package
- Fastest Wash and Dry Times²
- Eco-Friendly
- Touch-2-Open™ / Close doors
- Luxury-Design™ Lighting
- Luxury-Quiet™ Sound Package
- NSF®-Certified Sanitation Cycle
- Individual Custom Options
- Perfect Tumble™ Drying
- Luxury-Dry™ System
- ENERGY-STAR®-Qualified

	Colors	Overall Dimensions (H x W x D)	Cutout Dimensions (H x W x D)
EWFLS65I	RR/MB/TS/SS/IW	38" x 27" x 31-1/2"	38" x 54" x 32-1/4" min. ² 75-3/4" x 27" x 32-1/4" min. ³
EIFLS55I	RR/MB/IW	38" x 27" x 31-1/2"	38" x 54" x 32-1/4" min. ² 75-3/4" x 27" x 32-1/4" min. ³
EIFLW55H	IW	38" x 27" x 31-1/2"	38" x 54" x 31-1/2" min. ² 75-3/4" x 27" x 31-1/2" min. ³
EWME/GD65I	RR/MB	38" x 27" x 31-1/2"	38" x 54" x 32-1/4" min. ² 75-3/4" x 27" x 32-1/4" min. ³
EWME/GD65H	TS/SS/IW	38" x 27" x 31-1/2"	38" x 54" x 32-1/4" min. ² 75-3/4" x 27" x 32-1/4" min. ³
EIME/GD55I	RR/MB/IW	38" x 27" x 31-1/2"	38" x 54" x 32-1/4" min. ² 75-3/4" x 27" x 32-1/4" min. ³
EIE/GD55H	IW	38" x 27" x 31-1/2"	38" x 54" x 31-1/2" min. ² 75-3/4" x 27" x 31-1/2" min. ³

¹Without 15" Pedestal

²Side-by-Side Installation

³Stacked Installation

⁴Based on manufacturer specifications.

⁵Fastest time based on smallest load/Fast Wash and Fast Dry cycles selected for various load compositions.

NOTE: Always consult local and / or national electric and gas codes. For planning purposes only. Refer to Product Installation Guide on the web at electroluxappliances.com for detailed instructions.

Specifications subject to change.

Available on select models

Drop into our virtual kitchen or laundry room.
Go to electroluxappliances.com

Colors:



Mediterranean Blue (MB)



Red Hot Red (RR)



Turquoise Sky (TS)



Silver Sands (SS)



Island White (IW)

Electrolux Major Appliances, N.A.

USA • 250 Bobby Jones Expressway • Augusta, GA 30907 • 1-877-4electrolux (1-877-435-3287) • electroluxappliances.com
CANADA • 5855 Terry Fox Way • Mississauga, ON L5V 3E4 • 1-800-265-8352 • electroluxappliances.ca

E09SCMH 10/09

© 2009 Electrolux Home Products, Inc.

Printed in the U.S.A.

High standards of quality at Electrolux Home Products, Inc. mean we are constantly working to improve our products. We reserve the right to change specifications or discontinue models without notice.