



MAHON DOOR CORPORATION

QUALITY PRODUCTS SINCE 1912

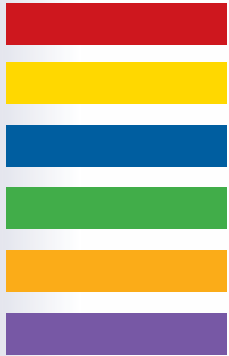


mahondoors.com



MAHON DOOR CORPORATION

QUALITY PRODUCTS SINCE 1912

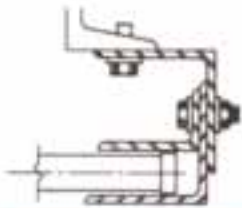


Stats & Guides

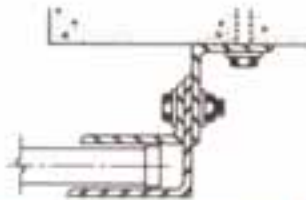


SLAT	HEIGHT	DEPTH	MATERIAL	APPLICATION
1	1-1/2"		22 Ga. steel or stainless steel	Service & labeled counter shutters
1A	1-1/2"		.050 Extruded Aluminum	Service shutters
2	2"		22 & 20 Ga. steel, stainless steel, and aluminum	Available as replacement slats or special construction
3	3-1/8"		22, 20, 18, & 16 Ga. steel, stainless steel, and aluminum	Service and labeled doors medium to large openings
4	3-3/16"		22, 20, or 18 Ga. steel exterior - 24 Ga. steel interior with insulation	Insulated doors, all sizes
5	3-3/16"		22, 20, & 18 Ga. stainless steel and aluminum	Service and labeled doors to large openings.

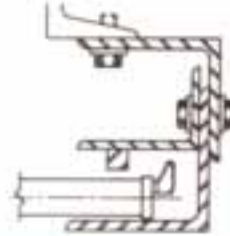
Mahon Door powder coat is available in more than **100 colors** for virtually unlimited design requirements.



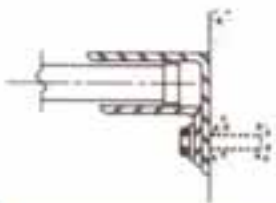
Face of wall mounted to steel jambs with machine bolts.



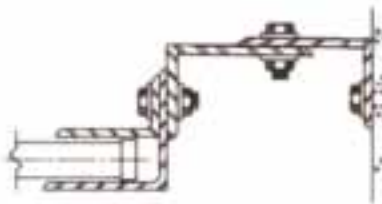
Face of wall mounted to masonry jambs with expansion bolts.



Face of wall mounted guide showing windlock and windlock bar



Standard between jamb mounted guide for push-up doors. Pockets in wall above header for req'd clearances.



Standard between jamb mounted guide for chain, crank, and motor operated doors.

Guide details as shown are the most common types for roll up door mountings. Special guides can be designed to suit field or design requirements. Consult Mahon engineering department, or your Mahon representative.

mahondoor.com | 1. 800. 826. 3667

Rolling Service Doors

Rolling Service Doors Standard Specifications

- 1. Furnish & Install** rolling service doors as indicated. Doors shall be as manufactured by Mahon Door Corporation.
- 2. Work Not Included** unless otherwise specified; preparation of openings, steel jambs or supports, trim, access panels, field or finish painting, wiring or disconnect switches for motor operated doors.
- 3. Curtains** are to be formed of galvanized steel, aluminum, stainless steel interlocking slats designed to withstand a windload of 20 pounds per square foot. Windlocks to be furnished where required by opening span, or for heavier windload requirements. Steel slats shall be galvanized per ASTM standards, chemically treated for paint adhesion. Both ends of alternate slats shall be re-inforced with 2 (steel, aluminum, stainless steel) angles of equal weight or extruded aluminum bottom bar assembly standard on all doors up to 16'-0" unless specified otherwise.
- 4. Counterbalance Assembly** shall be furnished with oil tempered helical torsion springs having a 25% safety factor. Springs shall be fixed to tapered cast anchors, mounted on a single steel torsion rod. Torsion rod to be attached to a spring adjusting wheel, adjustable without removing the hood. Entire spring assembly to be housed in a steel pipe shaft of proper diameter and thickness so not to exceed .03" of deflection per foot of span.
- 5. Bracket Plates** are to be of steel plate with sealed ball bearings to support counterbalance assembly and door curtain. Brackets to form end closures and support hood.
- 6. Hoods** shall not be less than 24 Gauge (galvanized steel, aluminum, stainless steel), contour to fit end brackets, and reinforced with stiffening beads at top and bottom edges.
- 7. Guides** are to be fabricated of (steel, aluminum, stainless steel) angles of not less than 3/16" thick. Depth of guides to be sufficient to retain curtain under windload specified. If windlocks are required, guides will be furnished with windlock retainers. Guides to be assembled with 3/8" bolts, bolted to jambs at spacings not exceeding 3'-0" on centers, bellmouths and door stops are incorporated into guide assemblies as standard.
- 8. Operation** is to be manual, with lift handles, hand chain and gear maximum of 35 pounds of pull, hand crank gear, or motor operator.
- 9. Locking** with provision for padlocks by means of (slide bolts on manual doors), (chain lock keeper for chain operated doors), (locking disc for crank operated doors), (self-locking gearing on motor operated doors), with chain lock for emergency hand chain.
- 10. Finish** steel surfaces to receive one shop coat of prime paint except galvanized surfaces, bearings, etc. For aluminum finish shall be (mill), (anodized), (duranodic). For stainless steel finish shall be (mill), (#4).



Specifications for Optional Features

Motor Operations to include high starting torque motor, reduction gearing, solenoid brake, limit switches for up and down door travel, emergency hand chain with electrical interlock to cut power to control switch when hand chain is engaged, magnetic relay starter with overload protection, internal pre-wiring to terminal block, three button station operating on a 24 volt control circuit. Motor is removable without affecting emergency hand chain operation. Wiring diagram provided.

Reversing Safety Door Edge to be furnished on motor operated doors. Upon contact with an obstruction this safety feature will stop the door and return it to fully open position.

Bottom Astragal as the sill to be provided using tubular neoprene.

Windlocks to be provided for doors exceeding 20 pounds per square foot windload with appropriate windlock guides.

Sloping Bottom Bars to be furnished as indicated to suit sloped sill conditions.

All Seal Weather Door to be provided with weather stripping around all edges, including guide weather stripping, bottom bar astragal, hood baffle and No. 5 slat.

Shop Coat curtain and hoods shall be shop primed in addition to non-galvanized surfaces. A full range of powder coatings is also available.

Vision Lites, 1" x 5", to be furnished at eye level, assemble consisting of 3 lites across - 5 slats high.

Exterior Mounting with exterior hoods and operator covers, thru wall provided when operation is desired inside - door mounted on exterior.

Galvanizing to be applied to guides, brackets and pipe shafting in addition to galvanized parts provided in standard specifications.

Facias and Soffits to be provided, if shown to be supplied by Mahon.

Insulated Slats shall be double-faced galvanized and prime painted #4 slat with polyisocyanurate.

Stoplock Safety Bearing to be furnished on motor operated doors prevent doors from falling due to damage to motor operator, drive chain or pipe shaft.

Wicket Doors are available. Call factory with your specifications.

Cylinder Locking is to be provided on the bottom bar of the door. For motor operated doors, protective cut-out switches to be furnished.

Perforated security door.

Transparent from inside,
opaque from outside.
Allows air circulation while
effectively screening out most insects.



Vision lite feature on
rolling door with
Perforated Door.



MAHON DOOR CORPORATION

QUALITY PRODUCTS SINCE 1912

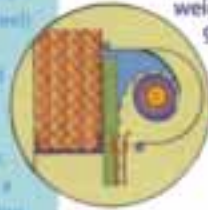
Insulated Service Doors

Rolling Service Doors Standard Specifications

1. Furnish & install rolling service doors as indicated. Doors shall be as manufactured by Mahon Door Corporation.
2. Work Not Included unless otherwise specified: preparation of openings, steel jamba or supports, trim, access panels, field or finish (painting, wiring) or disconnect switches for motor operated doors.
3. Curtains are to be formed of galvanized steel, aluminum, stainless steel interlocking slats designed to withstand a windload of 20 pounds per square foot. Windlocks to be furnished where required by opening span, or for heavier windload requirements. Steel slats shall be galvanized per ASTM standards, chemically treated for paint adhesion. Both ends of alternate slats shall be reinforced with 2 steel, aluminum, stainless steel angles of equal weight or extruded aluminum bottom bar assembly standard on all doors up to 18' 0" unless specified otherwise.
4. Counterbalance Assembly shall be furnished with oil tempered helical torsion springs having a 25% safety factor. Springs shall be fixed to top steel cast anchor, mounted on a single steel torsion rail. Torsion rod to be attached to a spring adjusting wheel, adjustable without removing the hood. Entire spring assembly to be housed in a steel pipe shaft of proper diameter and thickness to not be exceed .01" of deflection per foot of span.
5. Bracket Plates are to be of steel plates with sealed ball bearings to support counterbalance assembly and floor curtain brackets to form and closures and support hood.
6. Heads shall not be less than 24 Gauge galvanized steel, aluminum, stainless steel, carbon to fit end brackets, and be reinforced with stiffening beads at top and bottom edges.
7. Guides are to be fabricated of steel, aluminum, stainless steel angles of not less than 1/2" thick. Depth of guides to be sufficient to retain curtain under windload specified. If windlocks are required, guides will be furnished with windlock retainers. Guides to be assembled with 1/2" bolts, bolted to jamb at spacings not exceeding 3'-0" on centers, bottoms and door stops are incorporated into guide assemblies as standard.
8. Operation is to be manual with lift handles, hand chain and gear maximum of 35 pounds of pull, hand crank gear, or motor operate.
9. Locking with provision for padlocks by means of slide bolts on manual doors, chain lock keeper for chain operated doors, locking disc for crank operated doors, self locking gearing on motor operated doors, with chain lock for emergency hand chain.
10. Finish steel surfaces to receive one shop coat of prime paint except galvanized surfaces, bearings, etc. For aluminum finish shall be mill, unanodized, (chromated). For stainless steel finish shall be mill, (2B).

Insul-Seal Curtain

Insul-Seal insulated doors shall have curtains assembled from interlocking 22, 20, or 18 gauge galvanized steel for the exterior section and 24 gauge for the interior section. The slats are available with baked on prime finish. Stainless steel and aluminum are also available. Slat to have flush inner and outer face and 17/32" thick expanded polyisocyanurate insulation placed between steel sections. Slats shall be assembled with malleable iron endlocks locking each end of each slat. (Provide windlocks as required by door size or design windload.) Curtains shall be designed to withstand minimum of 20 lbs. per square foot of windload. Bottom of each curtain shall be reinforced with two angles of equal weight. Door is weather stripped with hood baffle, guide weatherseals, and loop astragal on bottom bar.



HOOD WEATHER BAFFLE

Is standard with the All-Seal Weather Door, lintel baffles also available. Optional fascias usually required for applications to metal buildings.

GUIDE WEATHERSTRIP

Guide weatherstripping on outside provided as standard. Optional weatherstripping can be provided on inside in addition. Special guide weatherstripping is available for application to curves slats.



BOTTOM BAR WEATHERSTRIP

Bottom bar weatherstripping provided as standard on both the extruded aluminum and steel angle bottom bars.

MAHON SPECIAL VISION LITE WITH INSULATED SLATS

INSUL-SEAL SLATS ARE COMPLETELY INSULATED EVEN WHEN VISION LITES ARE UTILIZED.



mahondoor.com | 1. 800. 826. 3667

Labeled Fire Doors

Underwriter's labeled Fire Door Specifications

1. Furnish & Install rolling service doors as indicated. Doors shall be as manufactured by Mahon Door Corporation, constructed in accordance with Underwriters Laboratories, Inc. requirements.

2. Work Not Included unless otherwise specified: preparation of openings, steel jambs or supports, trim, access panels, field or finish painting, wiring or disconnect switches for motor operated doors.

3. Curtains are to be formed of (galvanized steel) (stainless steel) interlocking slats of not less than #20 gauge for class (A) (B) (C), nor less than #22 gauge for class D labeled doors. Steel slats shall be galvanized per ASTM standards, chemically treated for paint adhesion. Both ends of each slat to be equipped with malleable iron endlocks. The bottom of each curtain is to be reinforced with two (steel) (stainless steel) angles of equal weight.

4. Counterbalance Assembly shall be furnished with oil tempered helical torsion springs having a 25% safety factor. Springs shall be fixed to tapered cast anchors, mounted on a single steel torsion rod. Torsion rod to be attached to a spring adjusting wheel. Entire spring assembly to be housed in a steel pipe shaft of proper diameter and thickness so not to exceed .01" of deflection per foot of span.

5. Automatic Closing of doors, in the event of fire, is activated by melting of fusible links. This releases the closing device and the oscillating governor controls the downward speed of the door.

6. Heads shall be of #24 Gauge (galvanized steel, stainless steel), and are to be laterally reinforced to prevent sag.

7. Operation is to be manual, with lift handles (hand chain and gear maximum of 25 pounds of pull) (hand crank gear) (motor operated).

8. Bracket Plates are to be of steel plate with sealed ball bearings to support counterbalance assembly and door curtain. Brackets to firm and closures and support hood.

9. Guides are to be fabricated of (steel, aluminum, stainless steel) angles of not less than 3/16" thick, assembled with 3/8" bolts, bolted to the jambs at a maximum spacing of 1'-6" on center. Holes to be slotted for heat expansion.

10. Finish steel surfaces to receive one shop coat of prime paint except galvanized surfaces, bearings, etc. For aluminum finish shall be (mill, anodized, (duranode)). For stainless steel finish shall be (mill, 64).

Mahon Door Underwriters rolling steel doors can be installed on openings requiring fire labeled closures. In the event of fire these doors will close automatically upon the melting of the fusible link, and/or release by smoke detection devices, which prevent the passage of flame and smoke. Under normal usage with the same ease as service doors. Thru-wall fusible links are available as an optional item.

Mahon slat #3 (pictured) is standard with fire doors. #4 slat type (insulated) and #5 slat type (flat slat) are optional items, and will be supplied if specified by U.L., heavier gauges when specified will be furnished as an optional item.



UNDERWRITERS OVERSIZED CERTIFICATE is furnished on all Mahon doors exceeding 120 sq. ft. in door area. This certificate certifies that the door was made in compliance with Underwriters Laboratories, Inc. requirements.



U.L. LISTED EXPANSION SHIELDS where required. Mahon can now furnish listed expansion shields for use on concrete jambs, also complies with NFPA 80 standards for fire doors and windows.



U.L. LISTED MOTORS when specified Mahon can supply listed operators along with many optional electrical control devices. Ease of door operation makes motor operation a desirable option.

Labels are available on doors up to 120 sq. ft. with no greater dimension than 12'-0" in width or height. Oversize certificates can be furnished for doors up to 576 sq. ft. with no greater dimension than 24'-0" in width or height.

- ✓ **Class "A" Label**
Division of fire walls, 3 hour rating
- ✓ **Class "B" Label**
Enclosures to vertical shafts, 1 ½ hour rating
- ✓ **Class "C" Label**
Openings in corridors or partitions, ¾ hour rating
- ✓ **Class "D" Label**
Exterior walls, severe exposure, 1 ½ hour rating





MAHON DOOR CORPORATION

QUALITY PRODUCTS SINCE 1912

Labeled Fire Shutters

Mahon fire shutter are designed to offer maximum fire protection requiring minimum side and head room clearances. Available up to 96 sq ft. with a maximum width of 12'-0".

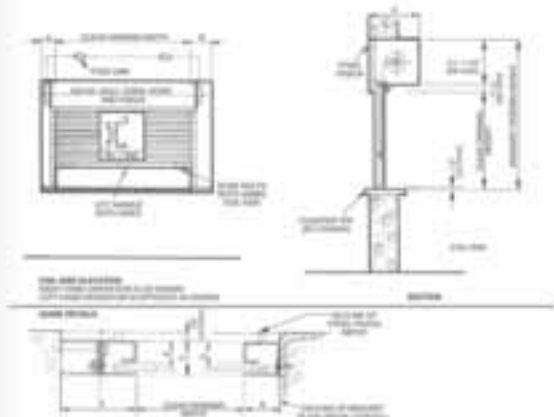
Shutters are available in either galvanized or stainless steel, and can be furnished with manual operation, crank operation, or motor operation. Class "A" Label (3 hour), Class "B" Label (1 1/2 hour), or Class "C" Label (3/4 hour) are available.

Rolling Shutter Slat



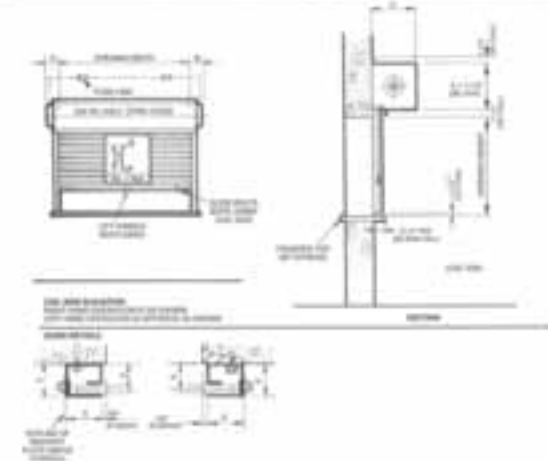
Underwriters Labeled LP2 - MANUAL PUSHUP - BETWEEN JAMB MOUNTED

OPENING WIDTH	A	B	OPENING HEIGHT	C
to 6'-0" (1828.8mm)	6"	3"	to 5'-1" (1549.4mm)	18 1/2" (468.7mm)
8'-0" to 12'-0" (2438.4mm to 3657.6mm)	6"	4"	5'-2" to 9'-0" (1574.8mm to 2438.4mm)	12 1/2" (317.5mm)



Underwriters Labeled LP1 - MANUAL PUSHUP - FACE OF WALL MOUNTED

OPENING WIDTH	A	B	OPENING HEIGHT	C
to 6'-0" (1828.8mm)	6"	3"	to 5'-1" (1549.4mm)	18 1/2" (468.7mm)
8'-0" to 12'-0" (2438.4mm to 3657.6mm)	6"	4"	5'-2" to 9'-0" (1574.8mm to 2438.4mm)	12 1/2" (317.5mm)



Standard Specifications

- Furnish and Install** rolling fire shutter as manufactured by Mahon Door Corporation, constructed in accordance with the requirements of Underwriters Laboratories, Inc., in either "A," "B," or "C" label.
- Curtain** to be made from (galvanized steel) (stainless steel) interlocking flat slats no lighter than #22 gauge. Each end of slat shall be fitted with endlocks. Bottom bar to be of angles equipped with slide locking bolts.
- Guides** shall be (steel) (stainless steel), fabricated to details as approved by Underwriters Laboratories, Inc.
- Counterbalance Assembly** springs to be helical torsion type with a safety factor of 25%. Springs to be mounted on a steel torsion shaft and housed in a steel pipe. Furnished sealed ball bearings to minimize wear of pipe shaft rotation around inner shaft.
- Bracket Plates** shall be steel, to carry counterbalance assembly and curtain. Brackets shall form end closures and support hood.
- Automatic Closing** to be by release of fusible link or smoke detection equipment. Bracket to be equipped with a starting device which when released permits the shutter to automatically close. Governor controls provided as required by Underwriters Laboratories, Inc.
- Hood** to be minimum #24 gauge sheet of (galvanized steel) (stainless steel).
- Finish** galvanized steel baked primer, (galvanized steel), stainless steel shall be (mill) (#4).

mahondoor.com | 1. 800. 826. 3667

Rolling Grilles

The crisp, clean lines of a Mahon Rolling Grille will make your security solution an aesthetic pleasing one. Available in either aluminum or stainless steel, these highly durable grilles can be ordered in four different models: Gardaire, Brick, Staright-Link and Poly-Guard

Gardaire is our most rolling grille. The close (1-1/4") spacing of its horizontal rods make it an ideal choice for your retail or high security application.

The Brick pattern and Straight-Link design grilles offer visual alternatives. For offices, schools and behind glass installations, these grilles are an excellent choice.

When you are looking for the ultimate in security, look to Mahon's **Poly-Guard Rolling Grille**. High strength 1/8" Lexan® makes Poly-Guard an unbeatable choice.



Aluminum - Standard Specifications

1. **Furnish and Install** counter shutter as manufactured by Mahon Door Corporation.
2. **Curtain** to be made from extruded aluminum interlocking flat slats, having a thickness of .050. Alternate slats shall be fitted with endlocks. Bottom bar to be a tubular aluminum member equipped with slide bolt locking devices and vinyl astragal.
3. **Guides** to be extruded with wool pile lining both sides, to reduce both dust and noise. Equipped with snap on trim to conceal mounting bolts.
4. **Counterbalance Assembly** springs to be torsion type enclosed in a steel pipe shaft, a steel torsion shaft shall be provided within the pipe shaft, to which the springs are affixed. Sealed ball bearings shall be provided to reduce rotational wear.
5. **Hood** to be fabricated from aluminum sheet having a minimum thickness of .040.
6. **Operation** up to 14'-0" in width, operation shall be manual. Units over 14'-0" shall be operated by crank with removable arm.
7. **Finish** aluminum surfaces shall be clear satin anodized. Other parts shall receive one shop coat of aluminum paint.



Steel/Stainless Steel - Standard Specifications

1. **Furnish and Install** counter shutter as manufactured by Mahon Door Corporation.
2. **Curtain** to be made from (galvanized gray prime steel) (stainless steel) interlocking flat slats. Alternate slats to be fitted with endlocks. Bottom bar to be equipped with slide bolt locking devices and astragal.
3. **Guides** to be of extruded aluminum with wool pile lining both sides, to reduce both dust and noise. Equipped with snap on trim to conceal mounting belts.
4. **Counterbalance Assembly** springs to be helical torsion type enclosed in a steel pipe shaft, a steel torsion shaft shall be provided within the pipe shaft, to which the springs are affixed. Sealed ball bearings shall be provided to reduce rotational wear.
5. **Hood** to be #24 gauge sheet of (galvanized steel) (stainless steel).
6. **Operation** up to 14'-0" in width, operation shall be manual. Units over 14'-0" shall be operated by crank with removable arm.
7. **Finish** galvanized steel baked primer, steel shall receive one shop coat gray prime. Stainless steel (mill) (#4).



MAHON DOOR CORPORATION

QUALITY PRODUCTS SINCE 1912

Operators & Accessories



The PRO-H is designed for use on commercial/industrial sectional doors with high or vertical lift track and rolling doors and grilles.



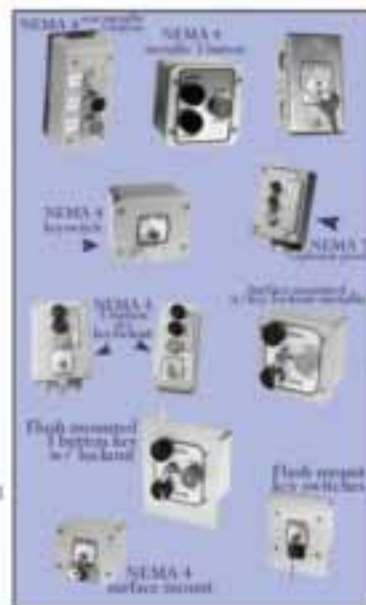
The PRO-GJ is designed for use on commercial sectional doors with high or vertical lift track and small rolling doors, shutters, and grilles that require no more than 15 cycles per hour.



The PRO-GH is designed for use on all rolling doors and grilles and large sectional doors with high or vertical lift track.

Standard Features	Model PRO:			Standard Features	Model PRO:		
	H	GJ	GH		H	GJ	GH
2 year warranty (5 year mechanical parts)	✓	✓	✓	Solenoid brake standard	✓	✓	✓
Heavy duty reversing contractor c/w electrical interlock	✓	✓	✓	#50 roller chain drive & sprockets	✓	✓	✓
Continuous duty industrial motor	✓	✓	✓	Chain keeper	✓	✓	✓
Full overload protection	✓	✓	✓	Powder metal limit arms	✓	✓	✓
Worm gear in oil-bath reducer	✓	✓	✓	Universal right or left hand mounting	✓	✓	✓
34 V fused control circuit	✓	✓	✓	#41 roller chain drive & 41B32 door sprocket supplied	✓	✓	✓
C-2 wiring standard (Constant Pressure Close)	✓	✓	✓	Floor level disconnect for emergency manual operation	✓	✓	✓
External radio control terminal strip	✓	✓	✓	Baked on dark grey coat finish	✓	✓	✓
Three Button control station	✓	✓	✓	Heavy duty SL V-belt	✓	✓	✓
Fully adjustable rotary limit switches	✓	✓	✓	1/2" ball bearings on pulley shaft	✓	✓	✓
Motor removable w/out affecting limit setting	✓	✓	✓	1" ball bearings on drive shaft	✓	✓	✓
Emergency chain hold w/ electrical cut-out switch for manual operation	✓	✓	✓	Adjustable friction clutch	✓	✓	✓
	✓	✓	✓	Mechanical brake system	✓	✓	✓

Open-Close Devices



Mahon Door Corporation offers a wide variety of Open-Close devices to suit all of your needs. For further information on a product specific to your door please contact one of our representatives.



Open close signal



Pull-cord controls

see us at
Sweets.com