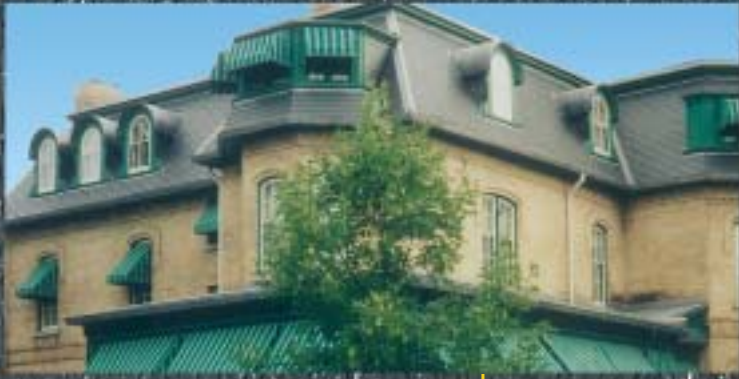


07 31 26/NOR
BuyLine 1342



North Country Slate®



d u r a b l e



n a t u r a l



s l a t e
r o o f i n g

h i s t o r i c

THE COMPANY

The Tradition Continues...

Natural roofing slate has been sheltering man from the elements for more than a thousand years. Created by the forces of nature over 500 million years ago, this timeless product continues to be the roof of choice for the world's most prestigious and treasured buildings.

North Country Slate's goal is to identify and represent the finest natural slate quarries in the world. All North Country slates are quarried from proven slate deposits and meet the most stringent European, U.S. and Canadian production requirements.

Our roofing slates contain a pleasing variation in shade, veining, texture and grain. No other product can duplicate these natural characteristics, and the specification of North Country on fine homes and historic buildings is a testament to their durability and beauty.

North Country slates have earned the respect of architects, building owners and restoration professionals worldwide. They have withstood the test of time under the world's most demanding climatic conditions, and are accepted without compromise or equal.

We offer a complete range of natural roofing slates with an extensive palette of colors, textures and sizes to choose from. Color options include black, gray, green, purple, mottled purple and red with unfading and semi-weathering characteristics.

With North Country's availability in a range of slate sizes and thicknesses, roofs can be designed with a smooth overall appearance or a rough hewn texture. Our products are backed by the North Country steadfast commitment to quality and service.

For assistance with sales, or technical inquiries regarding roof design, please contact our sales office. Full architectural services are available and samples will be forwarded upon request. Visit "Roofing Specification Download" under "Tech Support" on our web site for a CSI 3-Part Roofing Slate Specification. For restoration projects, send us your old slate for color identification and current availability.

Telephone: 416-724-4666 / 1-800-975-2835

Fax: 416-724-2807

www.northcountryslate.com

UNFADING BLACK



North Country Unfading Black is a premium quality roofing slate offering an elegant and lasting roof for both new construction and restoration projects. Favorably compared to the famous slate of the Monson region of Maine, this smooth, rich black slate with a slight luster has earned the admiration of architects, contractors and building owners around the world. North Country Unfading Black slate meets or exceeds ASTM requirements as an S-1 rated roofing slate. This slate is produced by a single quarry, North America's largest, and is exclusive to North Country.

SEMI-WEATHERING GRAY/BLACK (VERMONT BLACK)



North Country Semi-Weathering Gray/Black (Vermont Black) is a premium quality roofing slate containing shades of gray and black in subtle linear patterns. A percentage of these slates will weather to tones of brown and buff over time. Drawn from select Vermont quarries, North Country Gray/Black slate meets or exceeds ASTM requirements as an S-1 rated roofing slate.

UNFADING GRAY



North Country Unfading Gray is a premium quality roofing slate of light to medium gray, with mottled inclusions of dark gray and black. This slate is frequently employed to create subtle color texture in a primarily gray roof. North Country Unfading Gray slate is produced by select Vermont quarries and meets or exceeds ASTM test requirements as an S-1 rated roofing slate.

SEMI-WEATHERING (VERMONT) GRAY



North Country Semi-Weathering (Vermont) Gray is a premium quality roofing slate in a rich battleship gray color that deepens over time. A percentage of these slates will weather to tones of brown and buff. They make a popular roof covering alone or in combination with other slates to create a multi-colored roof. Produced by select Vermont quarries, North Country Semi-Weathering Gray slate meets or exceeds ASTM standards as an S-1 rated roofing slate.

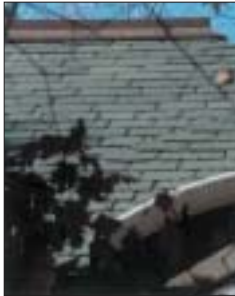
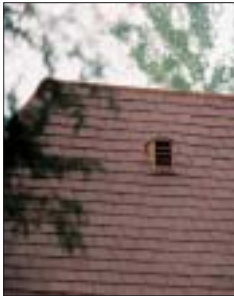
**UNFADING
PURPLE**

**SEMI-
WEATHERING
PURPLE**

**UNFADING
MOTTLED
PURPLE
AND GREEN**

**UNFADING
GREEN**

**SEMI-
WEATHERING
(SEA) GREEN**



North Country Unfading Purple is a premium quality roofing slate in tones of burgundy with frequent minor inclusions of green. These slates are a favorite of architects and owners for custom homes where they are blended with other slates to create multi-colored roofs. Produced by select Vermont quarries, North Country Unfading Purple meets or exceeds ASTM requirements as an S-1 rated roofing slate.

North Country Semi-Weathering Purple is a premium quality roofing slate in various shades of burgundy with frequent inclusions of green. A percentage of these slates will weather to tones of brown and buff over time. They are frequently used to smooth the color transitions on multi-colored roofs. North Country Semi-Weathering Purple meets or exceeds the requirements of ASTM as an S-1 rated roofing slate.

North Country Unfading Mottled Purple and Green is a premium quality roofing slate of varying shades of burgundy with frequent clouds or inclusions of green. These slates offer subtle color and texture variations on roofs where a multi-colored blend of slates would not suit the building's architecture or surroundings. North Country Unfading Mottled Purple and Green is produced by select Vermont quarries and meets or exceeds ASTM standards as an S-1 rated roofing slate.

North Country Unfading Green is a premium quality roofing slate in a color that has withstood the test of time. One of the most popular roofing slates, it can be used alone or as one of the blended colors used on multicolored roofs. This versatile slate is often specified in random widths to provide additional accent to its beauty. North Country Unfading Green slate is produced by select Vermont quarries and meets or exceeds the requirements of ASTM as an S-1 rated roofing slate.

North Country Semi-Weathering (Sea) Green is a premium quality roofing slate. Gray/Green when quarried, a percentage of these slates will weather to tones of brown and buff over time. North Country Semi-Weathering Green slate provides moderate color and texture variations while maintaining a primary background color of green. They are frequently used as the base color in multi-colored slate roofs. Produced by select Vermont quarries, this slate meets or exceeds ASTM standards as an S-1 rated roofing slate.

PROPERTIES



B&O Railroad Museum, Baltimore

THICKNESS AND WEIGHT

North Country Slate is available in the following nominal thicknesses:

Standards	3/16-1/4"	650-800 lbs./square
Quarters	1/4"-3/8"	800-1200 lbs./square
Heavies	3/8"-1/2"	1200-1800 lbs./square
Extra Heavies	1/2-3/4"	1800-2500 lbs./square

Thicker slates are available on special order allowing for the design of a truly unique, "one of a kind" roof.

NORTH COUNTRY SLATE PROPERTIES

North Country roofing slate when fixed with non-corroding nails or hooks can provide a service life in excess of 100 years.

- Maintenance free.
- Durable and long lasting.
- Resistant to chemical pollutants and acid rain.
- Unfading or weathering colors.
- Non combustible and fireproof.
- Unaffected by freeze/thaw cycles.
- Environmentally safe.
- Resistant to hail and other impact damage.
- Proven performance on rooftops.
- Delivered from stock.
- Special trimming on request.

SCHEDULE OF STANDARD SIZES

Slate size Inches	Pieces per square at 3" headlap	Exposure at 3" headlap
24x12	115	10.5"
22x12	126	9.5"
22x11	137	"
20x14	121	8.5"
20x12	141	"
20x11	154	"
20x10	170	"
18x14	137	7.5"
18x12	160	"
18x11	175	"
18x10	192	"
18x9	213	"
16x14	158	6.5"
16x12	185	"
16x11	201	"
16x10	222	"
16x9	246	"
16x8	277	"
14x12	218	5.5"
14x11	238	"
14x10	262	"
14x9	291	"
14x8	327	"
14x7	374	"
12x10	320	4.5"
12x9	356	"
12x8	400	"
12x7	457	"
12x6	534	"

Inventories vary with demand. For a size or thickness not listed, please contact our sales office.



Note:
A custom blend of slate colors can be supplied to create a truly unique roof.



North Country Slate®

8800 Sheppard Avenue East
 Toronto, Ontario
 Canada, M1B 5R4
 Telephone: (416) 724-4666 Fax: (416) 724-2807
 Toll Free: 1-800-975-2835
 Email: info@ncslate.com

See us in Sweets AEC Catalog or visit our web site at www.northcountryslate.com

Your Local Representative: