

Barrier-Free Bi-Level Water Cooler

ADAD8BL

Bi-Level with front and side push pads

MODEL

- ADAD8BL delivers 8.0 gallons of chilled drinking water per hour

FEATURES

Standard

- Built-in 100 micron strainer stops particles before the enterthe waterway
- Waterways are lead-free in materials and construction
- Stainless steel top
- Flexible bubbler guard
- Heavy duty galvanized steel frame
- High efficiency cooling tank and coil
- Refrigerant R-134a
- Three push pad activation
- External stream height adjustment

OPTIONS (at additional charge)

- Glass Fillers (Factory Installed)
- Push Handle (029603-004)
- Push Back (029603-005)
- Push Down (029603-006)
- Apron for upper unit

INSTALLATION

- Prior to roughing consult with local, state and federal codes for proper mounting height.
- Shipped with complete instructions and wall mounting bracket.
- Removable lower panel provides easy access for installation

FINISHES

- Standard Cabinet Finish: Granite powder coated paint on galvanized steel
- Optional finishes at no additional cost: Sandstone powder coated paint on galvanized steel
- Optional finishes at additional cost: Stainless Steel, Regency Bronze, and optional powder coated finishes



SUGGESTED SPECIFICATION*

Bi-level pressure drinking water cooler shall deliver a minimum of 8 GPH (30.3 LPH) of water at 50°F (10°C) cooled from 80°F (26.7°C) inlet water at 90°F (32.2°C) ambient. Each cooler shall have front and side mounted push pads requiring less than 5 pounds of force to activate that initiate water flow through a flexible hooded bubbler having a non-squirt feature. An internally mounted valve and adjustable stream regulator shall control water flow between 20 and 90 psig. Evaporator shall be high efficiency tank type and shall be encapsulated in insulation. R-134a refrigeration system shall be hermetically sealed and refrigerant flow shall be capillary tube controlled. An adjustable thermostat having an off position shall control refrigeration system. Stainless steel top shall have integral drain strainer. Heavy duty galvanized frame shall support powder coated galvanized exterior panels (standard finish) or stainless steel panels (optional finish). Potable water system components shall comply with the Safe Drinking Water Act Amendments, the 1988 Lead Contamination Control Act and shall be Certified to NSF/ANSI 61, Section 9. Chilled water capacity shall be rated per ARI Standard 1010. Cooler shall be Listed by Underwriters Laboratories Inc. to U.S. and Canadian safety standards. Drinking water cooler shall comply with ANSI A117.1 and ADA frontal approach and protruding object requirements. When properly installed, meets all TAS standards for children's frontal approach. Drinking water cooler shall be Sunroc model **ADAD8BL**.

***All specifications subject to change without notice**



Certified to NSF/ANSI 61/ Section 9

Model	Capacities*		Hot Tank Available	Pre-Cooler	115 volts, 60Hz		Glass Filler Accessory Option	Cabinet Color Options
	Cooling Capacity GPH (LPH)	Base Rate GPH (LPH)			Full Load Amps	Rated Watts		
ADAD8BL	8.0 (30.3)	--	No	No	4.6	460	Yes	Yes

*Capacities are at industry standard rating conditions of 50° F (10° C) outlet water, 80° F (26.7° C) inlet water and 90° F (32.2° C) ambient air.

Model covered by this specification complies with all known Plumbing Codes. Listed by Underwriters Laboratories Inc.

Five Year Limited Warranty: (Continental United States and Canada only)
Five years from date of installation on parts only.

Components in this cooler are lead free as defined by the Safe Drinking Water Act Amendments of 1986, and the Lead Contamination Control Act of 1988
Drinking water cooler is Certified to NSF/ANSI 61.

Export Warranty: One year component parts.
Detailed warranty certificate enclosed with each water cooler; sample copy available upon request.

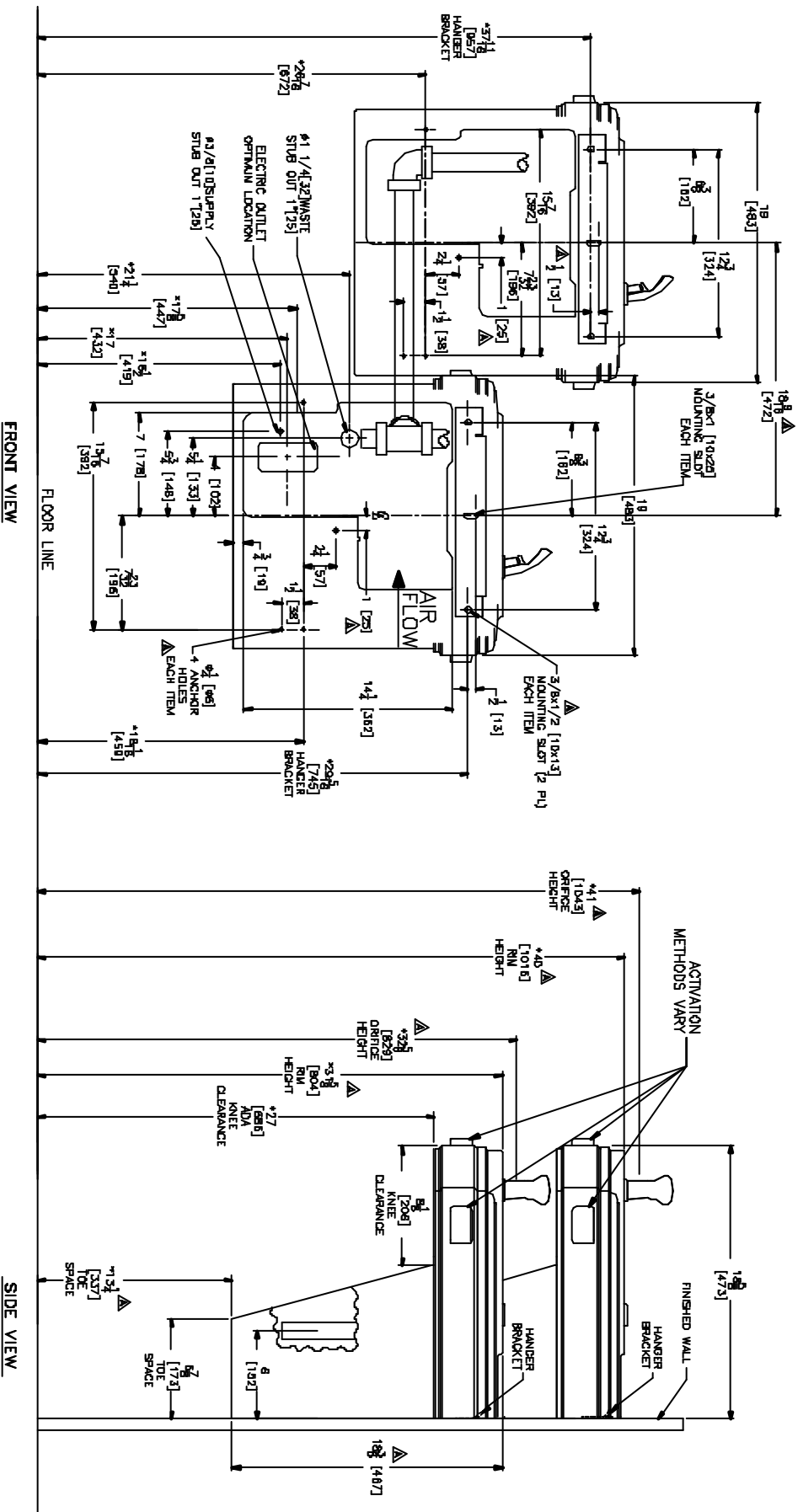
(614)861-1350

www.sunroc.com



Form 4007 05/06

ADAD8BL



- GENERAL NOTES**
- 1. UPRIGHT CONDENSER MUST BE SECURED TO WALL WITH ANCHOR HOLDS
 - 2. ALL DIMENSIONS ARE IN INCHES (MM)
 - 3. STOP VALVE, TRAP & ELECTRICAL OUTLET NOT SUPPLIED
 - 4. ALLOW 4" (102) MIN. PER SIDE FOR VENTILATION DIMENSIONS TO
 - 5. DISCONNECTED FROM HEAT AND LIGHT WIRING CROSS
 - 6. POWER CORD FURNISHED WITH NEMA 5-15 PLUG

