

Williams Scotsman: The Mobile Space Solution



Table of Contents

| | Page | | Page |
|--------------------------------|------|--|-------|
| INTRODUCTION | 1 | SALES OFFICES | |
| MOBILE OFFICES | | Models S04812 and S06412 | 10 |
| Models M0208 and M0248 | 2 | Models S04824 and S06424 | 11 |
| Model M0328 | 3 | Redi-Space Solutions™ | 12–13 |
| Model SV328 | 4 | MULTI-SECTIONAL BUILDINGS | 14–15 |
| Model M03610 | 5 | STORAGE UNITS | 16–17 |
| Models M04410 and M04412 | 6 | OPTIONS AND ADDITIONAL PRODUCTS | 18–19 |
| Models M05010 and M05012 | 7 | SERVICES | 20–21 |
| Models M06012 and M06412 | 8 | | |
| Model DW6424 | 9 | | |



Introduction

Headquartered in Baltimore, Maryland, Williams Scotsman, Inc. is a national company that provides mobile space, with local expertise, through a network of 86 offices across North America. The company has been a leader in the business for more than 50 years, committed to serving customers in the Construction, Commercial, Education, Healthcare and Government markets. Williams Scotsman provides such temporary and relocatable space as in-plant offices, field

offices, toilet trailers, shower lockers, storage containers, field labs, classrooms, guard houses, and sales centers.

Williams Scotsman can also solve your permanent needs with a multi-sectional or modular building. With over 98,000 units in stock, your space can be delivered and installed on time, meeting very tight schedules. All Williams Scotsman mobile space can be configured to meet national and state

building, electrical, mechanical, and plumbing codes, and it arrives clean and ready for use.

Financing is simple with a variety of lease or purchase options. In addition, our space is protected by a full-maintenance lease or purchase warranty, with fast response to any problem from our local service crews.



800.782.1500
www.willscot.com

Models MO208 and MO248



SIZE(S)

- 20' or 24' Long (including hitch)
- 16' or 20' Box size
- 8' Wide
- 7' Ceiling height

INTERIOR FINISH

- Paneled walls
- Vinyl tile floors
- Gypsum ceiling

FURNITURE

- One built-in desk with file cabinet
- One built-in plan table
- Overhead shelf

ELECTRIC

- Fluorescent ceiling lights
- Breaker panel

WINDOWS/DOORS

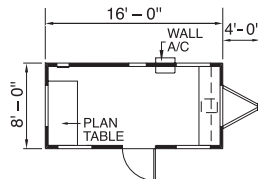
- Horizontal slider windows
- Vision panel door with standard lock

HEATING AND COOLING

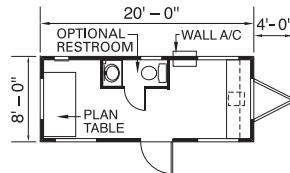
- Electric baseboard heat
- Thru-wall AC unit

EXTERIOR FINISH/FRAME

- Aluminum siding
- I-Beam frame
- Standard drip rail gutters



Model MO208 shown



Model MO248 shown

Model MO328



SIZE(S)

- 32' Long (including hitch)
- 28' Box size
- 8' Wide
- 7' Ceiling height

INTERIOR FINISH

- Paneled walls
- Vinyl tile floors
- Gypsum ceiling
- Private office(s)

FURNITURE

- Two built-in desks with file cabinets
- One built-in plan table
- Overhead shelf

ELECTRIC

- Fluorescent ceiling lights
- Breaker panel

WINDOWS/DOORS

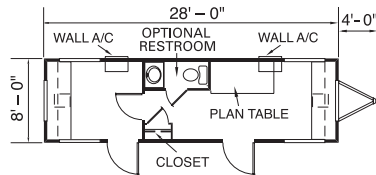
- Horizontal slider windows
- Two vision panel doors with standard locks

HEATING AND COOLING

- Electric baseboard heat
- Thru-wall AC unit

EXTERIOR FINISH/FRAME

- Aluminum siding
- I-Beam frame
- Standard drip rail gutters



Model SV328



SIZE(S)

- 32' Long (including hitch)
- 28' Box size
- 8' Wide
- 7' Ceiling height

INTERIOR FINISH

- Paneled walls
- Vinyl tile floors
- Gypsum ceiling
- Private office

FURNITURE

- One built-in desk with file cabinets
- One built-in plan table
- Overhead shelf

ELECTRIC

- Fluorescent ceiling lights
- Breaker panel

WINDOWS/DOORS

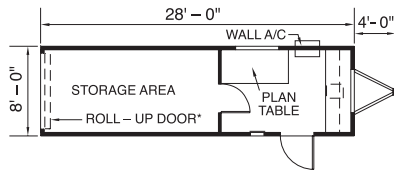
- Horizontal slider windows
- Vision panel doors with standard locks
- Overhead roll-up door

HEATING AND COOLING

- Electric baseboard heat
- Thru-wall AC unit

EXTERIOR FINISH/FRAME

- Aluminum siding
- I-Beam frame
- Standard drip rail gutters



Models MO3610



SIZE(S)

- 36' Long (including hitch)
- 32' Box size
- 10' Wide
- 8' Ceiling height

INTERIOR FINISH

- Paneled walls
- Vinyl tile floors
- Gypsum ceiling
- Private office

FURNITURE

- Two built-in desks with file cabinets
- One built-in plan table
- Overhead shelf

ELECTRIC

- Fluorescent ceiling lights
- Breaker panel

WINDOWS/DOORS

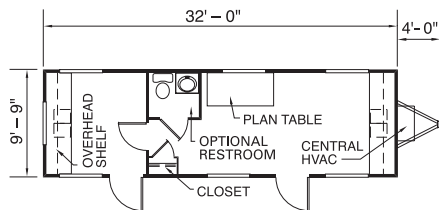
- Horizontal slider windows
- Two vision panel doors with standard locks

HEATING AND COOLING

- Central HVAC or thru-wall AC

EXTERIOR FINISH/FRAME

- Aluminum siding
- I-Beam frame
- Standard drip rail gutters



Models MO4410 and MO4412



SIZE(S)

- 44' Long (including hitch)
- 40' Box size
- 10' or 12' Wide
- 8' Ceiling height

INTERIOR FINISH

- Paneled walls
- Vinyl tile floors
- Gypsum ceiling
- Private office

FURNITURE

- Two built-in desks with file cabinets
- One built-in plan table
- Overhead shelf

ELECTRIC

- Fluorescent ceiling lights
- Breaker panel

WINDOWS/DOORS

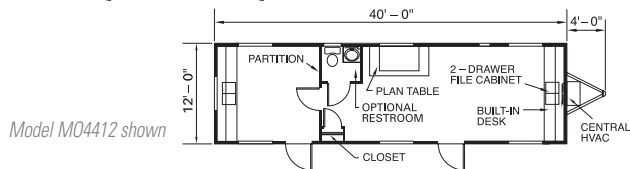
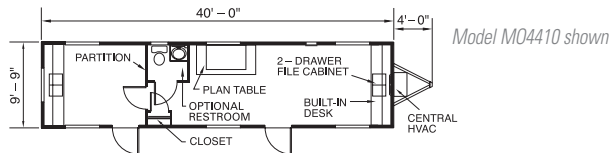
- Horizontal slider windows
- Two vision panel doors with standard locks

HEATING AND COOLING

- Central HVAC or thru-wall AC

EXTERIOR FINISH/FRAME

- Aluminum siding
- I-Beam frame
- Standard drip rail gutters



Models MO5010 and MO5012



SIZE(S)

- 50' Long (including hitch)
- 46' Box size
- 10' or 12' Wide
- 8' Ceiling height

INTERIOR FINISH

- Paneled walls
- Vinyl tile floors
- Gypsum ceiling
- Private office(s)

FURNITURE

- Two built-in desks with file cabinets
- One built-in plan table
- Overhead shelf

ELECTRIC

- Fluorescent ceiling lights
- Breaker panel

WINDOWS/DOORS

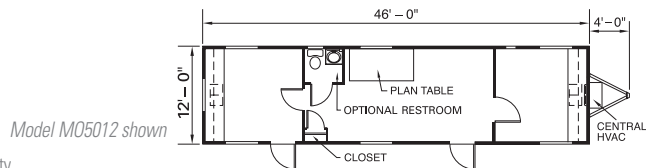
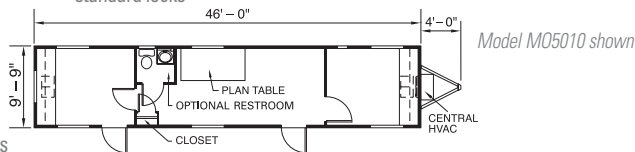
- Horizontal slider windows
- Two vision panel doors with standard locks

HEATING AND COOLING

- Central HVAC or thru-wall AC

EXTERIOR FINISH/FRAME

- Aluminum siding
- I-Beam frame
- Standard drip rail gutters



Models MO6012 and MO6412



SIZE(S)

- 60' or 64' Long (including hitch)
- 56' or 60' Box size
- 12' Wide
- 8' Ceiling height

INTERIOR FINISH

- Paneled walls
- Vinyl tile floors
- Gypsum ceiling
- Private office(s)

FURNITURE

- Two built-in desks with file cabinets
- One built-in plan table
- Overhead shelf

ELECTRIC

- Fluorescent ceiling lights
- Breaker panel

WINDOWS/DOORS

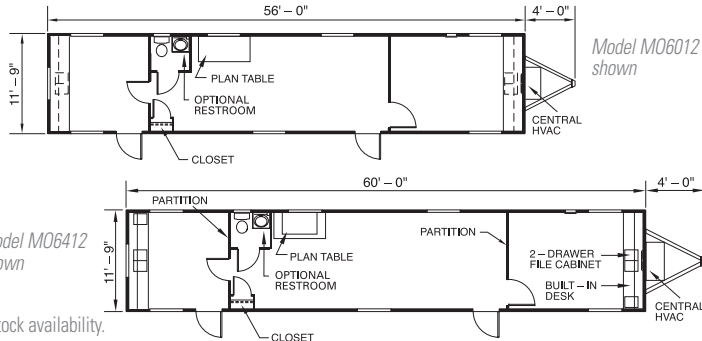
- Horizontal slider windows
- Two vision panel doors with standard locks

HEATING AND COOLING

- Central HVAC or thru-wall AC

EXTERIOR FINISH/FRAME

- Aluminum siding
- I-Beam frame
- Standard drip rail gutters



Model DW6424



SIZE(S)

- 64' Long (including hitch)
- 60' Box size
- 24' Wide
- 8' Ceiling height
- Other double-wide sizes are available

INTERIOR FINISH

- Paneled walls
- Vinyl tile floors
- Gypsum ceiling
- Private office(s)

FURNITURE

- Two built-in desks with file cabinets
- One built-in plan table
- Overhead shelf

ELECTRIC

- Fluorescent ceiling lights
- Single-phase electric
- Breaker panel

WINDOWS/DOORS

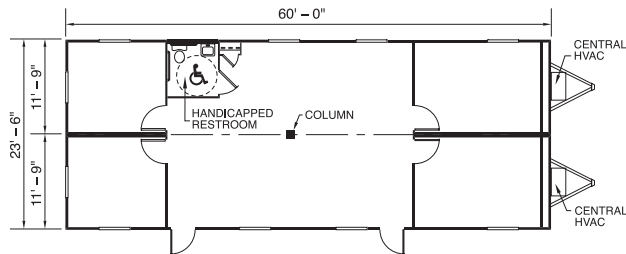
- Horizontal slider windows
- Two vision panel doors with standard locks

HEATING AND COOLING

- Central HVAC

EXTERIOR FINISH/FRAME

- Aluminum siding
- I-Beam frame
- Standard drip rail gutters



Models SO4812 and SO6412



Size(s)

- 48' or 64' Long (including hitch)
- 44' or 60' Box size
- 12' Wide
- 8' Ceiling height

FEATURES

- Large display/reception area
- Private office(s)
- Carpeting throughout
- ADA Restroom
- Coffee Bar

INTERIOR FINISH

- Vinyl covered gypsum walls
- Commercial carpeting
- Gypsum ceiling

ELECTRIC

- Fluorescent ceiling lights
- Breaker panel

WINDOWS/DOORS

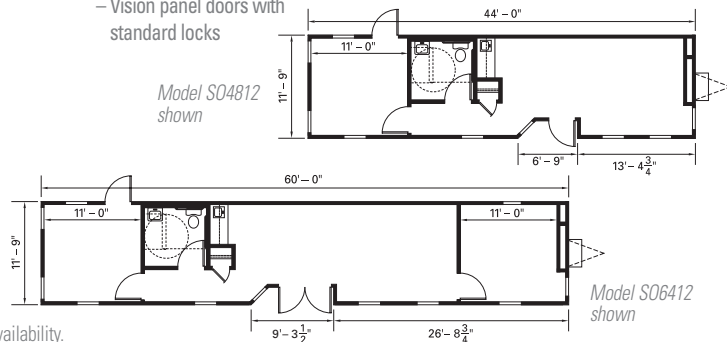
- Large glass windows
- Recessed french door
- Vision panel doors with standard locks

HEATING AND COOLING

- Central HVAC and duct heating

EXTERIOR FINISH/FRAME

- I-Beam frame
- T1-11 siding
- Standard drip rail gutters



Models SO4824 and SO6424



SIZE(S)

- 48' or 64' Long (including hitch)
- 44' or 60' Box size
- 24' Wide
- 8' Ceiling height

FEATURES

- Large display/reception area
- Private office(s)
- Carpeting throughout
- ADA Restrooms
- Coffee Bar

INTERIOR FINISH

- Vinyl covered gypsum walls
- Commercial carpeting
- Gypsum ceiling

ELECTRIC

- Fluorescent ceiling lights
- Breaker panel

WINDOWS/DOORS

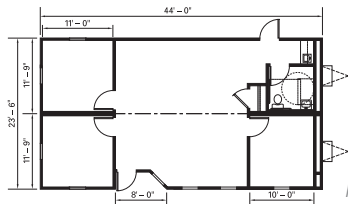
- Large glass windows
- Recessed french door
- Vision panel doors with standard locks

HEATING AND COOLING

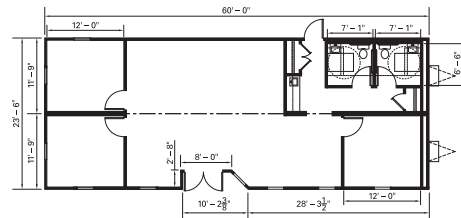
- Central HVAC and duct heating

EXTERIOR FINISH/FRAME

- I-Beam frame
- T1-11 siding
- Standard drip rail gutters



Model SO4824 shown



Model SO6424 shown

Redi-Space Solutions™



The **Redi-Space Solutions™** family of products offers the most versatile and advanced features in the mobile/modular building industry. They are totally compatible with one another and can be configured to meet your needs today and reconfigured to meet your needs tomorrow. In fact, easy is the best way to describe how your project will progress with **Redi-Space Solutions™**!

REDI-PLEX BUILDINGS™

The 60' clear span of a Redi-Plex Building creates a large, columnless space that can remain open or be customized.

REDI-PANEL SYSTEMS™

Take the open space of a Redi-Plex Building and create any floor plan you need.

REDI-ACCESS SYSTEMS™

These steps and ramps are Redi and available to complete your project in record time. Safely.





REDI-PLEX BUILDINGS™



REDI-ACCESS SYSTEMS™



REDI-PANEL SYSTEMS™



SIZE(S)

- 60' Long
- 12' Wide

INTERIOR FINISH

- Vinyl tile floors or carpet
- Pre-finished painted molding
- Coffee bar with laminated top
- Lighted exit signs
- T-grid ceilings
- Handicapped accessible bathrooms

ELECTRIC

- 120/240 volt single phase electric

WINDOWS/DOORS

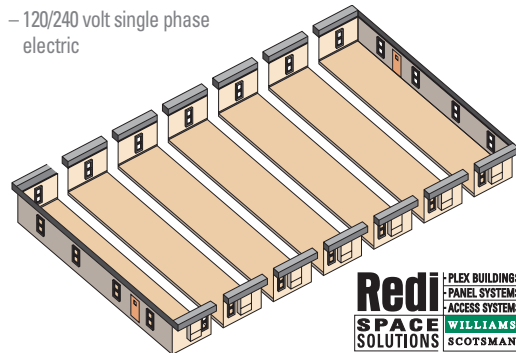
- Horizontal slider windows with mini blinds
- Heavy duty steel doors with vision panels

HEATING/COOLING

- Central air conditioning

EXTERIOR FINISH/FRAME

- Rubber membrane roof covering
- Transverse truss roof



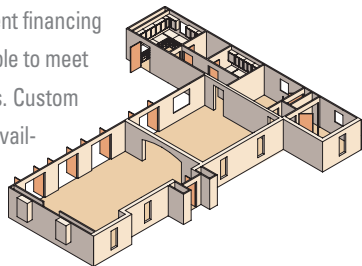
Multi-Sectional Buildings and Custom Sales Offices

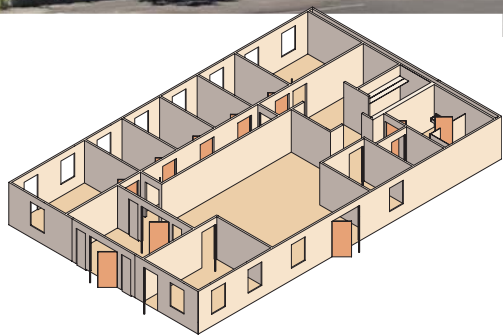
“ Williams Scotsman listened carefully to our needs. Often, we didn't know what we wanted or what our needs were. Williams Scotsman helped us define them. ”

~ Giles Njumbe,
*Woodrow Wilson Bridge Project,
Maryland/Virginia*

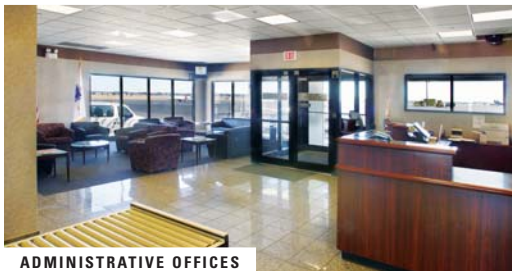


For an attractive working environment inside and out, Williams Scotsman's multi-sectional buildings give you unlimited options. Available as standard or custom units with a variety of interior and exterior finishes, multi-sectional buildings are a versatile solution for any space need and are relocatable and expandable as your needs change. Flexible buildings for any application from a simple sales office to classroom buildings and complete healthcare facilities. Convenient financing options are available to meet your requirements. Custom sales offices are available for purchase.





CUSTOM SALES OFFICES



ADMINISTRATIVE OFFICES

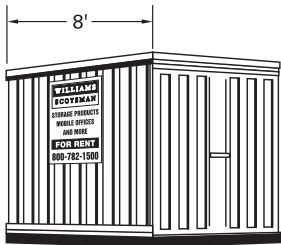


CONSTRUCTION OFFICES

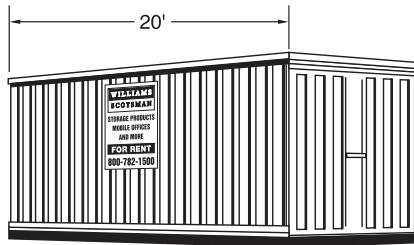
Storage Containers – Models CT208, CT408, and The Vault™



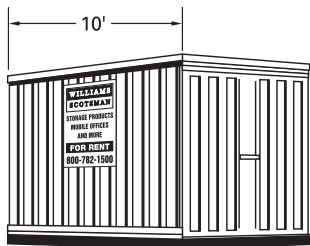
Williams Scotsman containers are an immediate solution to your onsite storage needs.



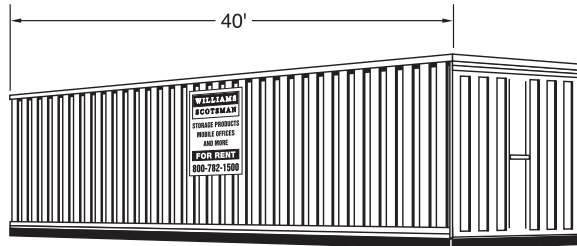
CT8x8



CT20x8



CT10x8



CT40x8

All the space you need for storage and warehousing. Weather-resistant and adaptable, our storage containers are the convenient answer for retail, commercial or construction storage.

SIZE(S)

- 8', 10', 20' or 40' length
- 8' Wide

FEATURES/SERVICES

- High security steel
- High security locking systems
- Ground level entry
- Short- or long-term on-site storage
- Immediate availability

Options and Additional Products



For your convenience, Williams Scotsman is a single source for the options that complete your space, giving you immediate occupancy to your unit.

STEPS

- Non-slip surface
- Aluminum construction
- Meet OSHA safety parameters

RAMPS AND DECKS

- Non-slip surface
- Welded aluminum construction
- Comply with ADA, OSHA and IBC guidelines

SKIRTING

- Enhances appearance
- Reduces risk of damage and liability



PORTABLE WIRELESS ALARM SYSTEM



IN-PLANT OFFICES



SECURITY SCREENS AND DOOR BARS



GUARDHOUSES

JOBSITE SECURITY SYSTEM

- Completely wireless and portable
- Durable
- Easy to install and use
- Protects jobsite equipment

SECURITY SCREENS AND DOOR BARS

- Protect building and contents
- Deter theft
- Reduce downtime

IN-PLANT OFFICES

- House and protect valuable assets and information
- Versatile and relocatable
- Create additional working space when you want, where you want
- Waste water and freshwater tanks available (service not included)

GUARDHOUSES

- Portable, efficient and secure
- Durable aluminum construction
- Many standard sizes available for immediate delivery

Services



IN-HOUSE SERVICE STAFF

Our skilled service staff can provide on-site service within 24-48 hours.

RELOCATIONS

Our professional drivers and crews can relocate your office and storage units as your needs change.

PART SALES

Our large inventory of parts include: doors, siding, trim, wheels, axles, windows, and many other hard-to-find parts.



INSTALLATIONS AND SITE WORK



FIELD SERVICE

INSTALLATIONS AND SITE WORK

Our skilled craftsmen comply with all applicable codes and can provide turnkey services.

Ask about cooperative purchasing, our GSA contract services, and special offers for trade associations



FOR MORE INFORMATION

Call or write Williams Scotsman
8211 Town Center Drive, Baltimore, MD 21236.

Visit the Williams Scotsman Website at www.willscot.com;
E-mail at info@willscot.com

SPACE BY



800.782.1500
www.willscot.com