

# Innovative Solutions for your space needs.



SPACE BY



MOBILE OFFICES  
CLASSROOMS  
MODULAR BUILDINGS  
STORAGE CONTAINERS

# Williams Scotsman International, Inc.

## Company Background



### Company Overview

Williams Scotsman International, Inc. is a leading provider of mobile and modular building space solutions for the Construction, Education, Industrial, Commercial/Retail, Healthcare and Government markets throughout North America and Spain. Established in the mid-1940s and officially incorporated in 1955, the company operates a fleet of more than 121,000 mobile offices, classrooms and storage units and serves the space needs of more than 30,000 customers. In addition to its core leasing business, the company manages and develops large permanent modular building projects from concept to completion. Headquartered in Baltimore, Maryland, Williams Scotsman employees have an on-the-ground presence across North America and Europe through a network of 100 branch locations.

### Company History

Williams Scotsman's history dates back more than 50 years. The company significantly raised its profile with the 1990 merger of two market leaders: Williams Mobile Offices and Scotsman Manufacturing Company. Williams Mobile Offices of Maryland introduced its first product – an eight-foot wide construction trailer – in 1944. Based in California since its inception in 1945, Scotsman Manufacturing Company was known first for recreational vehicles and later for space solutions designed for the film industry. Together, the companies offered an unprecedented selection of storage and mobile office products, as well as nationwide coverage.



# Mobile Office Space Solutions

13 34 23/WIL  
BuyLine 7996

## Mobile Offices – MO208, MO248, MO328



### Size(s)

- 20', 24' or 32' Long (incl. hitch)
- 16', 20' or 28' Box size
- 8' Wide
- 7' Ceiling height

### INTERIOR FINISH

- Paneled walls
- Vinyl tile floors
- Gypsum ceiling
- Private office(s)

### FURNITURE

- Two built-in desks with file cabinets
- One built-in plan table
- Overhead shelf

### ELECTRIC

- Fluorescent ceiling lights
- Breaker panel

### WINDOWS/DOORS

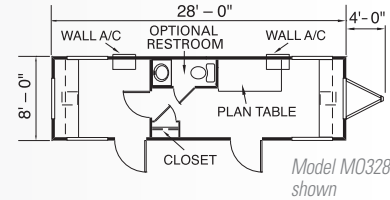
- Horizontal slider windows
- Two vision panel doors with standard locks

### HEATING AND COOLING

- Electric baseboard heat
- Thru-wall AC unit

### EXTERIOR FINISH/FRAME

- Aluminum/Wood siding
- I-Beam frame
- Standard drip rail gutters



\*Additional floor plans available. Floor plans and specifications may vary from those shown, and are subject to in-stock availability and location.

## Mobile Offices – MO3610, MO4010, MO5010



### Size(s)

- 36', 40' or 50' Long (incl. hitch)
- 32', 36' or 46' Box size
- 10' Wide
- 8' Ceiling height

### INTERIOR FINISH

- Paneled walls
- Vinyl tile floors
- T-Grid suspended ceiling
- Private office(s)
- Also available with optional restroom

### ELECTRIC

- Fluorescent ceiling lights
- Breaker panel

### WINDOWS/DOORS

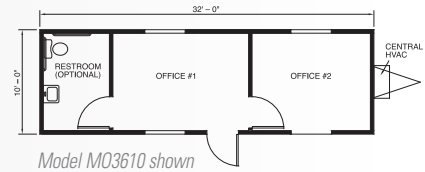
- Horizontal slider windows
- Two steel doors with standard locks

### HEATING AND COOLING

- Central HVAC or thru-wall AC

### EXTERIOR FINISH/FRAME

- Wood/Aluminum siding
- I-Beam frame
- Standard drip rail gutters



\*Additional floor plans available. Floor plans and specifications may vary from those shown, and are subject to in-stock availability and location.

## Mobile Offices – MO4412, MO5012, MO6012, MO6412



### Size(s)

- 44', 50', 60' or 64' Long (incl. hitch)
- 40', 46', 56', or 60' Box size
- 12' Wide
- 8' Ceiling height

### INTERIOR FINISH

- Paneled walls
- Vinyl tile floors
- Gypsum ceiling
- Private office(s)

### FURNITURE

- Two built-in desks w/ file cabinets
- One built-in plan table
- Overhead shelf

### ELECTRIC

- Fluorescent ceiling lights
- Breaker panel

### WINDOWS/DOORS

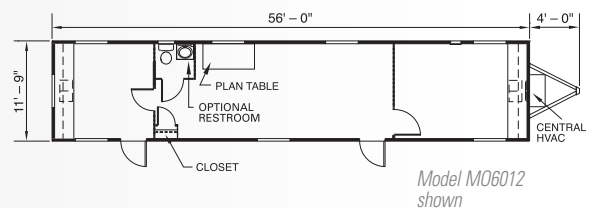
- Horizontal slider windows
- Two vision panel doors with standard locks

### HEATING AND COOLING

- Central HVAC or thru-wall AC

### EXTERIOR FINISH/FRAME

- Wood/Aluminum siding
- I-Beam frame
- Standard drip rail gutters



\*Additional floor plans available. Floor plans and specifications may vary from those shown, and are subject to in-stock availability and location.

# Sectional Modulars / Redi-Space Solutions™

## Multi-Sectional Buildings and Custom Sales Offices

“ Williams Scotsman listened carefully to our needs. Often, we didn't know what we wanted or what our needs were. Williams Scotsman helped us define them. ”

~ Giles Njume,  
Woodrow Wilson Bridge Project,  
Maryland/Virginia

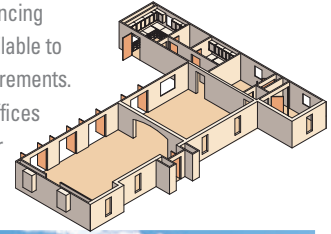


SALES CENTERS

For an attractive working environment inside and out, Williams Scotsman's multi-sectional buildings give you unlimited options. Available as standard or custom units with a variety of interior and exterior finishes, multi-sectional buildings are a versatile solution for any space need and are relocatable and expandable as your needs change. Flexible buildings for any application from a simple sales office to classroom buildings and complete healthcare facilities.

Convenient financing options are available to meet your requirements.

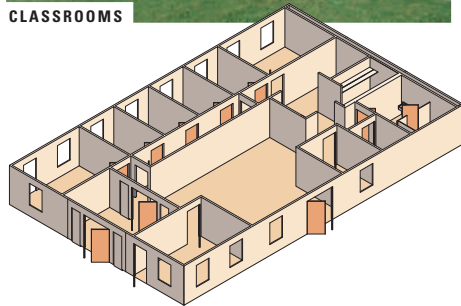
Custom sales offices are available for purchase.



CLASSROOMS



HEALTH CLINICS



ADMINISTRATIVE OFFICES



CONSTRUCTION OFFICES

## Redi-Space Solutions™



The Redi-Space Solutions™ family of products offers the most versatile and advanced features in the mobile/modular building industry. They are totally compatible with one another and can be configured to meet your needs today and reconfigured to meet your needs tomorrow. In fact, easy is the best way to describe how your project will progress with Redi-Space Solutions™!

### REDI-PLEX BUILDINGS™

The 60' clear span of a Redi-Plex Building creates a large, columnless space that can remain open or be customized.

### REDI-PANEL SYSTEMS™

Take the open space of a Redi-Plex Building and create any floor plan you need.

### REDI-ACCESS SYSTEMS™

These steps and ramps are Redi and available to complete your project in record time. Safely.



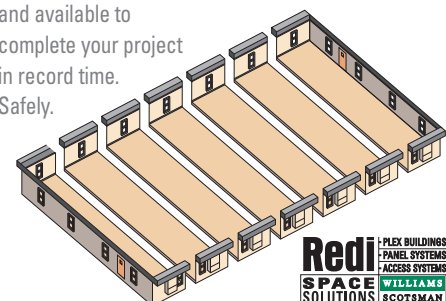
REDI-PLEX BUILDINGS™



REDI-PANEL SYSTEMS™



REDI-ACCESS SYSTEMS™



**Redi** PLEX BUILDINGS  
PANEL SYSTEMS  
ACCESS SYSTEMS  
**SPACE SOLUTIONS** WILLIAMS SCOTSMAN

## Accelerated Construction



• KSL Recreation – La Quinta, CA. 17,724 square foot complex built in ONLY 90 DAYS!

COMMERCIAL



EDUCATION



HEALTHCARE

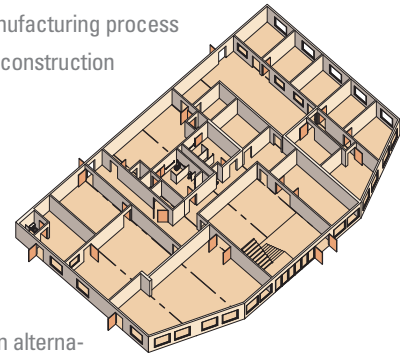


GOVERNMENT

Design: John Crane, Salmon Bay Design Group

### BENEFITS OF MODULAR CONSTRUCTION

- Concurrent Construction™ enables occupancy up to 50% faster than conventional construction, since the construction stages occur simultaneously
- Controlled manufacturing processes and premium workmanship result in superior quality
- Design and construction methods meet all state codes and building standards
- Standardized components and manufacturing process efficiencies allow for a repeatable construction process
- Expert team to manage every Concurrent Construction™ project



### MODULAR BUILDINGS

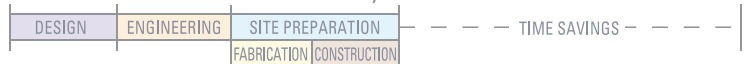
Williams Scotsman's Concurrent Construction™ technique provides an alternative to conventional construction that saves precious time and affords flexibility. Modular buildings are constructed in a controlled factory setting while the site work is completed, thereby reducing the overall cycle time from concept to completion by up to 50 percent.

Williams Scotsman's Concurrent Construction™ Process Timeline

#### TRADITIONAL CONSTRUCTION



CONCURRENT CONSTRUCTION™ – Nearly Half the Time!



# Storage Containers / Accessories

Storage Containers – Models CT88, CT108, CT208, CT408, and The Vault™



Williams Scotsman containers are an immediate solution to your onsite storage needs.

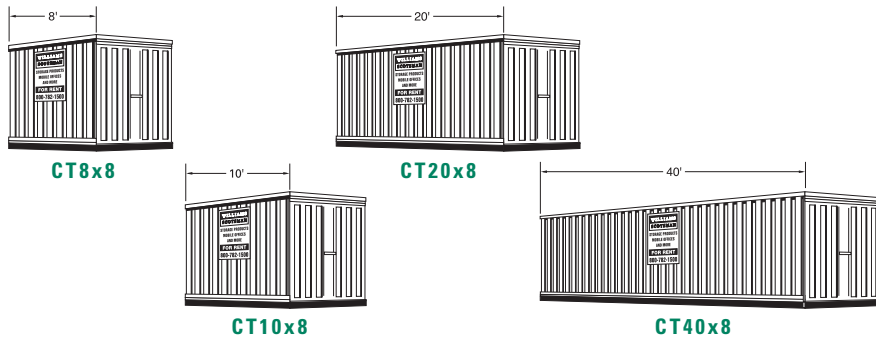
All the space you need for storage and warehousing. Weather-resistant and adaptable, our storage containers are the convenient answer for retail, commercial or construction storage.

### Size(s)

- 8', 10', 20' or 40' length
- 8' wide

### FEATURES/SERVICES

- High security steel
- High security locking systems
- Ground level entry
- Short- or long-term on-site storage
- Immediate availability



## Options and Additional Products



STEPS



DECKS



RAMPS



SKIRTING



PORTABLE WIRELESS ALARM SYSTEM



IN-PLANT OFFICES



SECURITY SCREENS AND DOOR BARS



GUARDBOUSES

For your convenience, Williams Scotsman is a single source for the options that complete your space, giving you immediate occupancy to your unit.

### STEPS

- Non-slip surface
- Aluminum construction
- Meet OSHA safety parameters

### RAMPS AND DECKS

- Non-slip surface
- Welded aluminum construction
- Comply with ADA, OSHA and IBC guidelines

### SKIRTING

- Enhances appearance
- Reduces risk of damage and liability

### JOBSITE SECURITY SYSTEM

- Completely wireless and portable
- Durable, easy to install and use
- Protects jobsite equipment

### SECURITY SCREENS AND DOOR BARS

- Protect building and contents
- Deter theft, reduce downtime

### IN-PLANT OFFICES

- House and protect valuable assets and information
- Versatile and relocatable
- Create additional working space when you want, where you want
- Waste water and freshwater tanks available (service not included)

### GUARDBOUSES

- Portable, efficient and secure
- Durable aluminum construction
- Many standard sizes available for immediate delivery

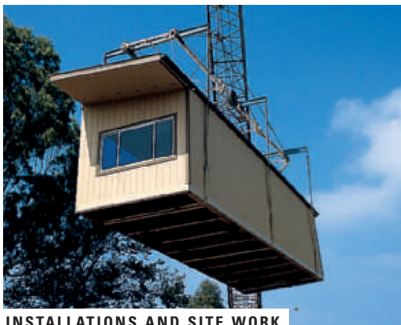
## Services



IN-HOUSE SERVICE



RELOCATIONS



INSTALLATIONS AND SITE WORK



FIELD SERVICE

### IN-HOUSE SERVICE STAFF

Our skilled service staff can provide on-site service within 24-48 hours.

### RELOCATIONS

Our professional drivers and crews can relocate your office and storage units as your needs change.

### PART SALES

Our large inventory of parts include: doors, siding, trim, wheels, axles, windows, and many other hard-to-find parts.

### INSTALLATIONS AND SITE WORK

Our skilled craftsmen comply with all applicable codes and can provide turnkey services.

Ask about cooperative purchasing, our GSA contract services, and special offers for trade associations:



## Locations



Headquartered in Baltimore, Maryland, Williams Scotsman employees have an on-the-ground presence across North America and Europe through a network of 100 branch locations. Call today to get connected with the nearest branch location via our toll free number.



SPACE BY



800.782.1500

[www.willscot.com](http://www.willscot.com)