

# **bp** Glass Garage Doors

## **The Architect's Choice**

- High Strength Extrusions
- Custom Powder Coated Finishes
- Custom Tapered Sections
- Custom Glazing Options
- Custom Fabrication

**TOLL FREE**

**877-442-1716**

**bp** Bryce Parker Co. LIC # 750084



Phone: 626-442-1716 Fax: 626-579-5320  
www.GlassGarageDoors.com

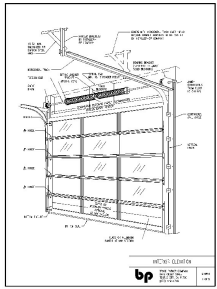
9412 Gidley Street, Temple City, CA 91780  
Email: Service@bpcompany.net



# Overhead Door Checklist

(For Architects & Contractors)

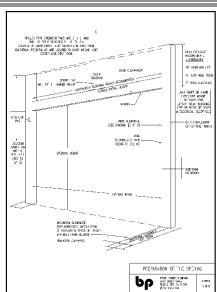
The following checklist has been designed by Bryce Parker Company to assist Architects & Contractors with important design characteristics of an All Glass Garage Door. Diagrams have been provided (See Attachments) to illustrate key areas of focus. Should additional assistance be necessary, please contact us Toll Free (877) 442-1716.



## Interior Elevation - (See Diagram #1 of 5)

Use this illustration to identify the following key design characteristics:

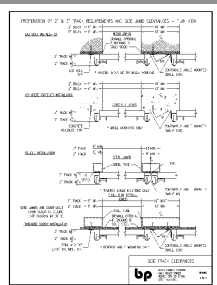
- Spring Pad (centered above header and made of solid backing; steel, concrete, or wood)
- Torsion Bar, Spring Assembly & Bearing Plates (fastened to spring pad and continuous jamb)
- Vertical & Horizontal Track (may not be obstructed in any way from floor to ceiling)
- Electric Operators Supply (1ea. 120v x 20 amp. receptacle mounted & located as per dia. #2 of 5)
- Back Hangers (supported above track from solid backing in ceiling, such as rafters)



## Preparation of the Opening - (See Diagram #2 of 5)

Cross-reference your door opening with this diagram to note the following:

- Check that the header is flush with the jambs (Both should be on the same vertical plane)
- Available Head Clearance (of solid backing): \_\_\_\_\_ ft. \_\_\_\_\_ in. (Provide info to BP Co.)
- Available Jamb Clearance (of solid backing): \_\_\_\_\_ ft. \_\_\_\_\_ in. (Provide info to BP Co.)
- Opening Height: \_\_\_\_\_ ft. \_\_\_\_\_ in. (Provide info to BP Co.)
- Opening Width: \_\_\_\_\_ ft. \_\_\_\_\_ in. (Provide info to BP Co.)
- Side Clearance: \_\_\_\_\_ ft. \_\_\_\_\_ in. (Should not be obstructed ex. cabinets)
- Backroom Clearance (into room): \_\_\_\_\_ ft. \_\_\_\_\_ in. (Should not be obstructed ex. Cabinets)

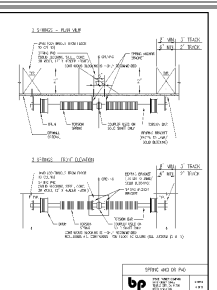


## Side Track Clearances - (See Diagram #3 of 5)

This page is mainly to illustrate the importance of the jamb area with regards to mounting the track. The additional weight of an all glass or aluminum sectional door must be supported properly by one of the following jamb types: (choose jamb type)

- Wood Jambs
- Concrete Jambs
- Steel Jambs
- Concrete & Steel Jambs

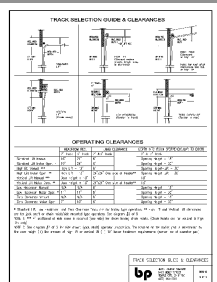
Note: It is acceptable for any of these jamb types to have drywall.



## Spring Anchor Pad Preparation - (See Diagram #4 of 5)

It is important to have solid backing in the header for the spring & electric operator assembly (including zero clearance installations). Since the number of springs and their configuration are determined at installation, it is important to design the spring pad for multiple configurations. The spring pad has a minimum requirement of 12" wide x Header Height (See Preparation Of The Opening Diagram #2). However, we recommend that you design a continuous spring pad (such as a structural header from jamb to jamb) to allow for multiple configurations.

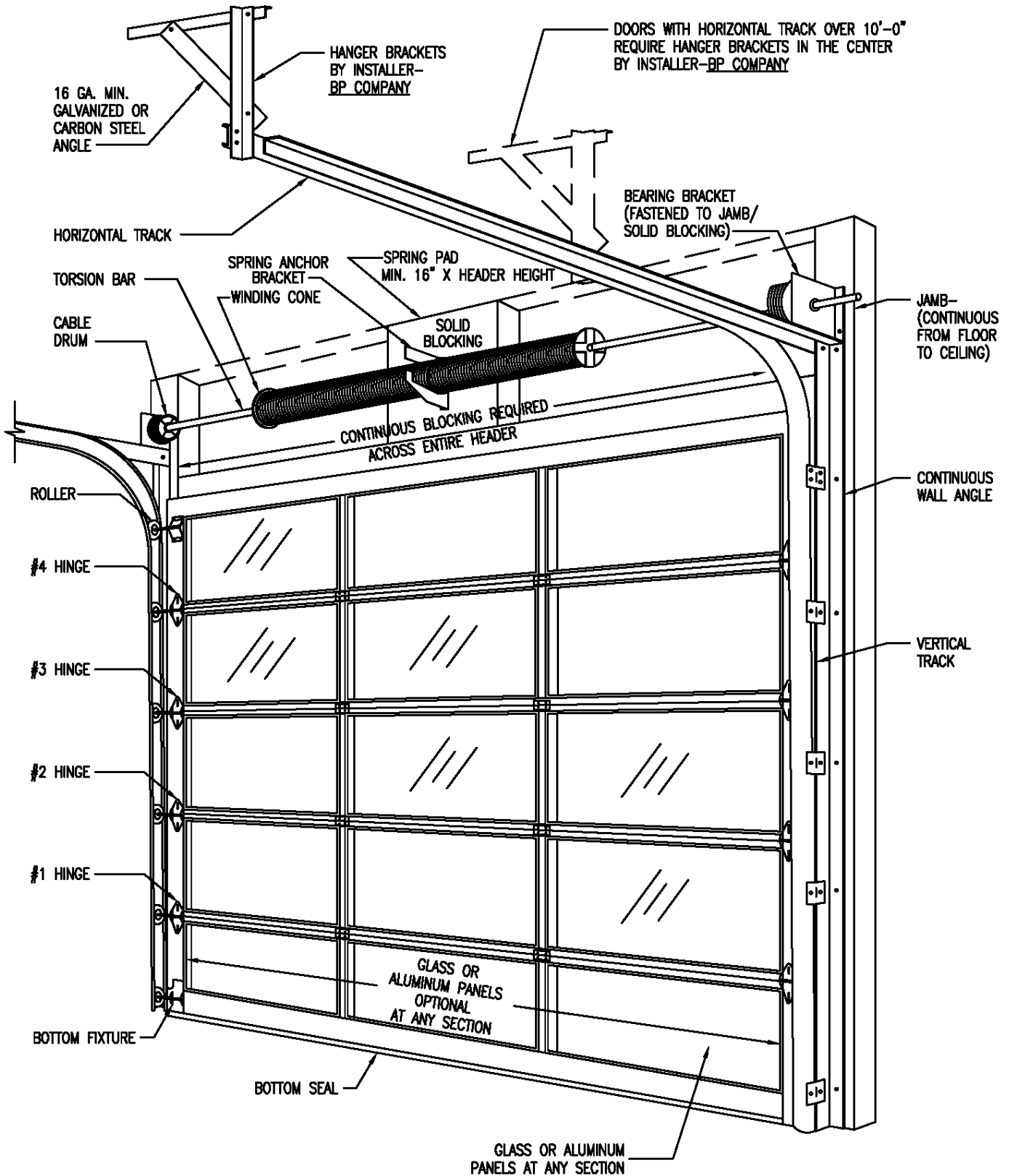
- Spring Anchor Pad



## Track Selection Guide - (See Diagram #5 of 5)

Using the information from Diagram #2 (Preparation of the Opening), you will be able to determine the appropriate track type for your opening.

- Standard Lift
- High Lift
- Roof Pitch
- Vertical Lift
- Low Headroom
- Zero Clearance



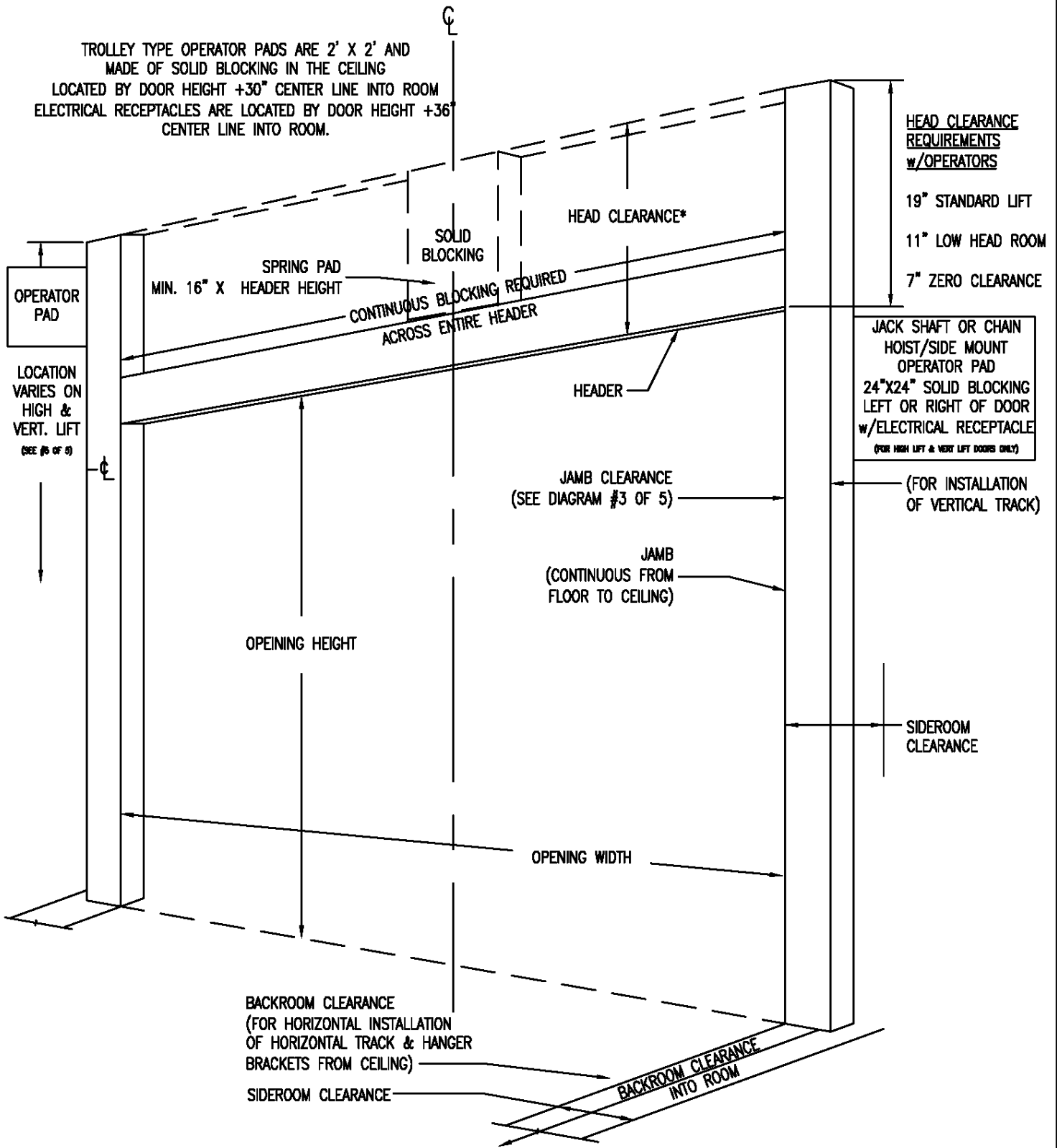
INTERIOR ELEVATION



BRYCE PARKER COMPANY  
 9412 GIDLEY STREET  
 TEMPLE CITY, CA 91780  
 (877) 442-1716

DRAWING  
 1 OF 5

TROLLEY TYPE OPERATOR PADS ARE 2' X 2' AND  
 MADE OF SOLID BLOCKING IN THE CEILING  
 LOCATED BY DOOR HEIGHT +30" CENTER LINE INTO ROOM  
 ELECTRICAL RECEPTACLES ARE LOCATED BY DOOR HEIGHT +36"  
 CENTER LINE INTO ROOM.



PREPARATION OF THE OPENING

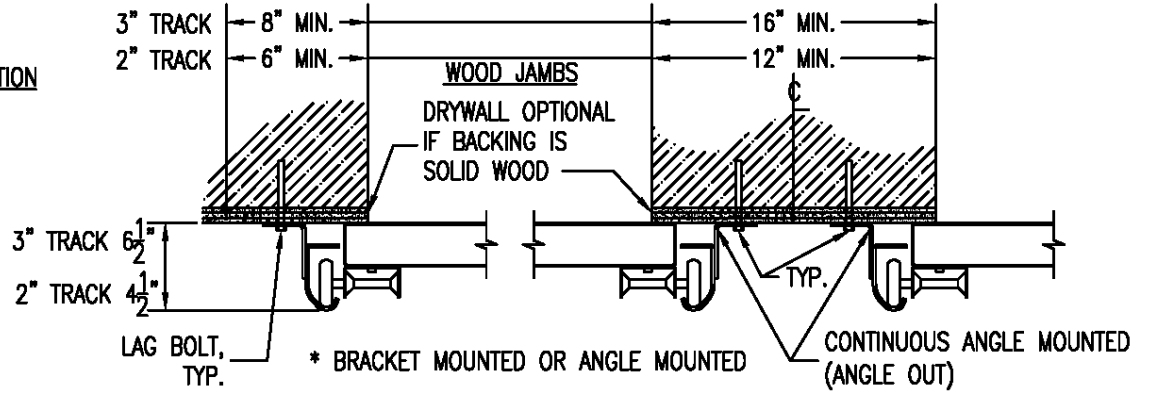


BRYCE PARKER COMPANY  
 9412 GIDLEY STREET  
 TEMPLE CITY, CA 91780  
 (877) 442-1716

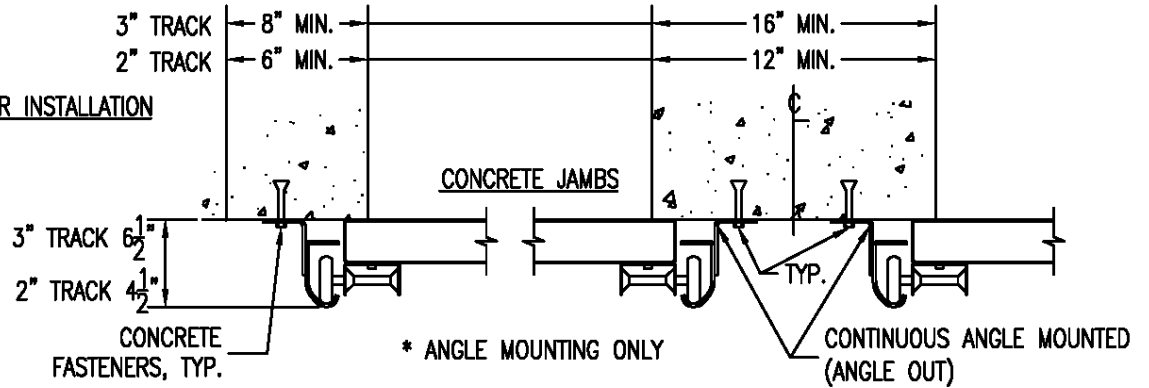
DRAWING  
 2 OF 5

PREPERATION OF 2" OR 3" TRACK REQUIREMENTS AND SIDE JAMB CLEARANCES - PLAN VIEW

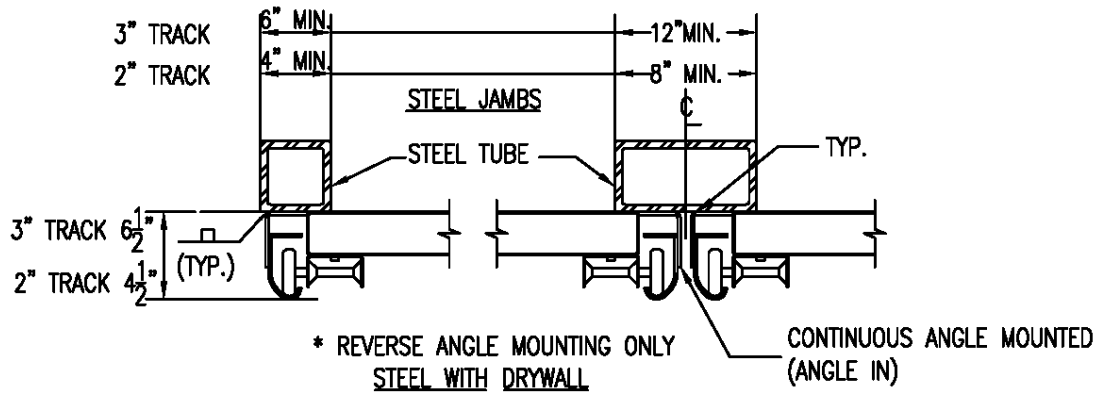
LAG BOLT INSTALLATION



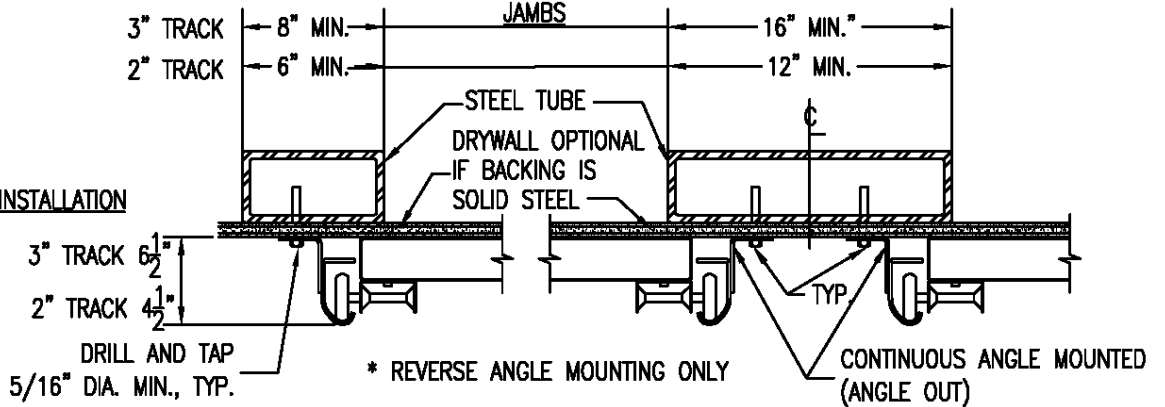
CONCRETE FASTENER INSTALLATION



WELDED INSTALLATION



THREADED SCREW INSTALLATION



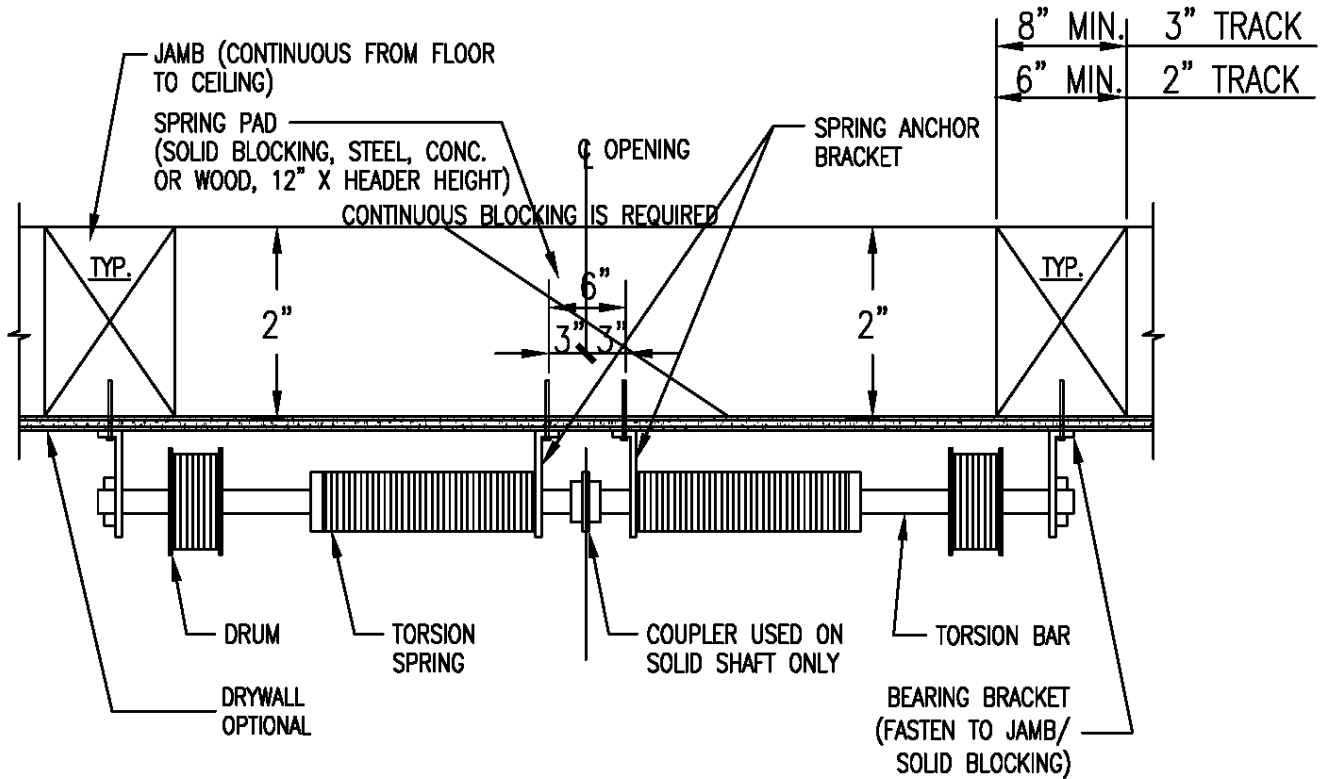
SIDE TRACK CLEARANCES



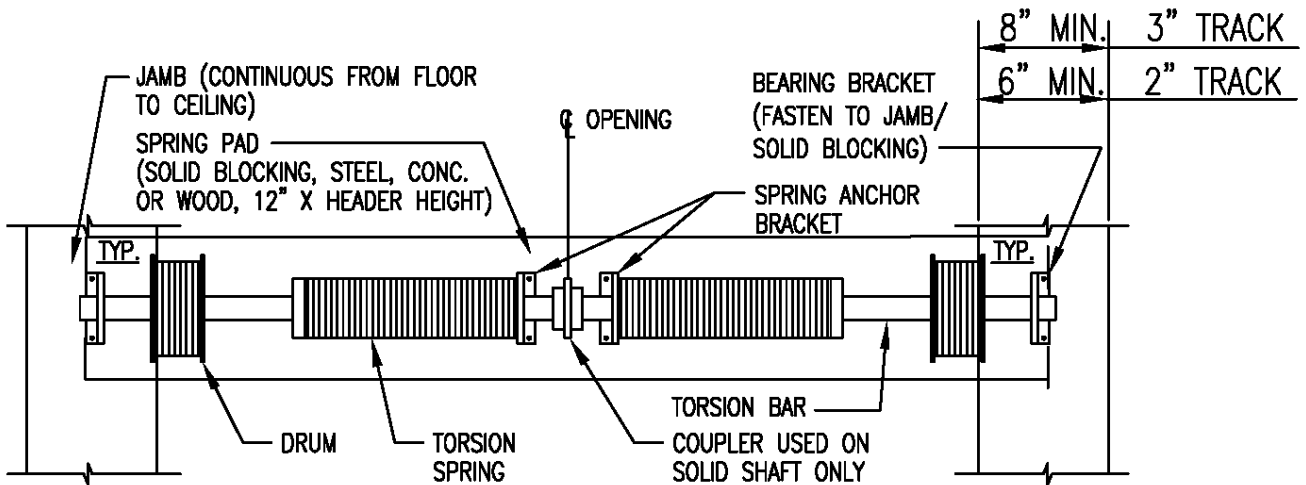
BRYCE PARKER COMPANY  
9412 GIDLEY STREET  
TEMPLE CITY, CA 91780  
(877) 442-1716

DRAWING  
3 OF 5

2 SPRINGS - PLAN VIEW



2 SPRINGS - FRONT ELEVATION



CONTINUOUS BLOCKING IS REQUIRED  
 NOTE: JAMBS ARE CONTINUOUS FROM FLOOR TO CEILING (SEE DIAGRAM #2 OF 5)

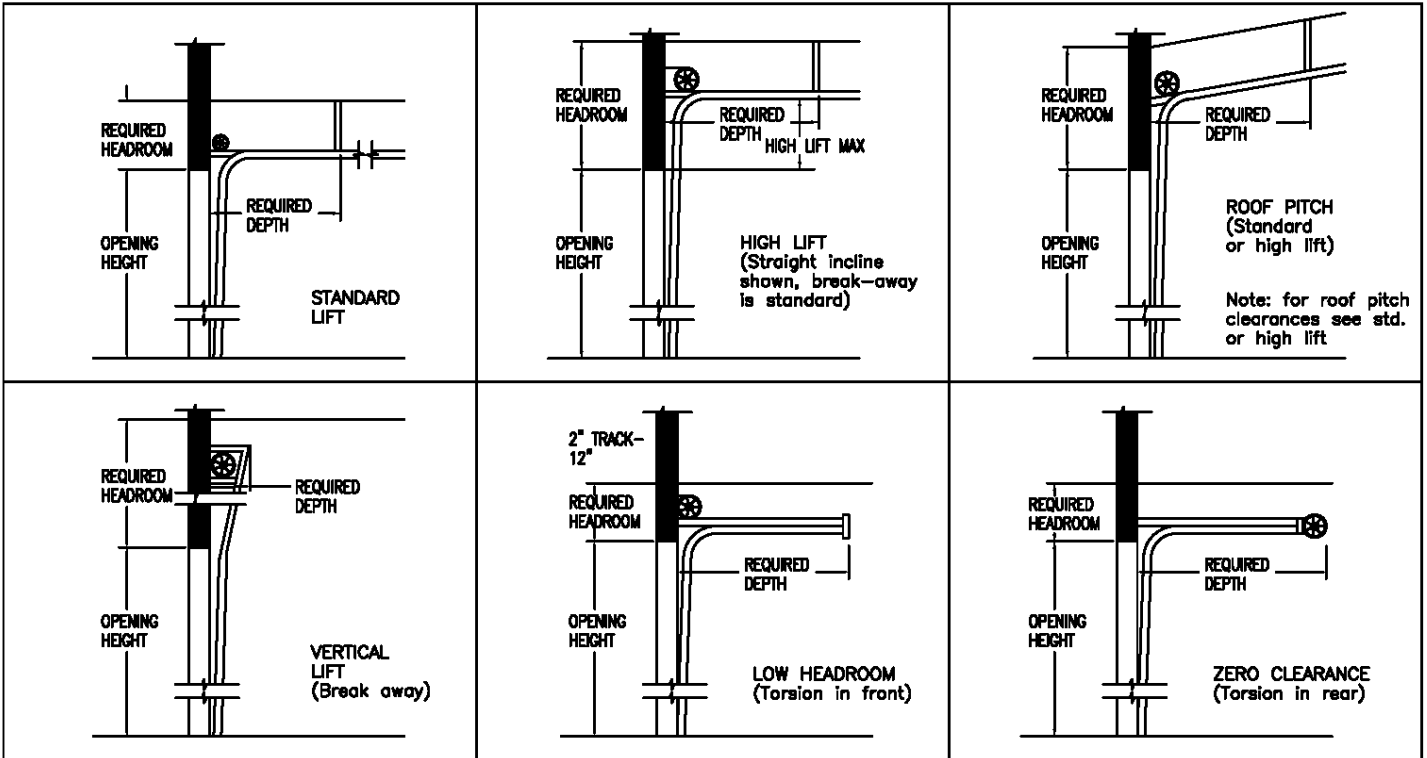
SPRING ANCHOR PAD



BRYCE PARKER COMPANY  
 9412 GIDLEY STREET  
 TEMPLE CITY, CA 91780  
 (877) 442-1716

DRAWING  
 4 OF 5

# TRACK SELECTION GUIDE & CLEARANCES



## OPERATING CLEARANCES

	HEADROOM REC.		SIDE ROOM		DEPTH INTO ROOM (PERPENDICULAR TO DOOR)
	2" Track	3" Track	2" Track	3" Track	2" & 3" Track
Standard Lift Manual	16"	21"	6"	8"	Opening Height + 18"
Standard Lift Motor Oper. *	19"	24"	6"	8"	Opening Height + 30"
High lift Manual ***	High Lift + 12"		6"	8"	Opening Height-Lift + 30"
High Lift Motor Oper. **	High Lift + 12"		24"x24" One side of header**		Opening Height-Lift + 30"
Vertical Lift Manual ***	Door Height + 18"		6"	8"	18"
Vertical Lift Motor Oper. **	Door Height + 18"		24"x24" One side of header**		18"
Low Headroom Manual	N/A	N/A	N/A	N/A	Opening Height + 18"
Low Headroom Motor Oper. *	11"	14"	6"		Opening Height + 30"
Zero Clearance Manual	N/A	N/A	N/A	N/A	Opening Height + 18"
Zero Clearance Motor Oper.	7"	10"	6"		Opening Height + 30"

\* Standard Lift, Low Headroom, and Zero Clearance Track are for trolley type operators.

\*\* High Lift and Vertical Lift clearances are for jack shaft or chain hoist/side mounted type operators. See diagram #2 of 5

\*\*\* 4" of additional side room is required (one side) for doors having chain hoists. (Chain hoists are for vertical & high lifts only)

NOTE 1: See diagram #2 of 5 for side mount (jack shaft) operator preparation. The location of the spring pad is determined by the door height (+) the amount of high lift or vertical lift (-) 18" below headroom requirements (center line of operator pad)

## TRACK SELECTION GUIDE & CLEARANCES



BRYCE PARKER COMPANY  
9412 GIDLEY STREET  
TEMPLE CITY, CA 91780  
(877) 442-1716

DRAWING  
5 OF 5



**bp - GLASS GARAGE DOORS & ENTRY DOORS**

A Division of Bryce Parker Co.

License Number. 750084

## ARCHITECTURAL SPECIFICATIONS

### bp - ALUMINUM & GLASS SECTIONAL GARAGE DOORS

**Manufactured for Shipment Across the entire USA**

**Factory Direct Installations Throughout CA, AZ, NV, FL & Optional In All Other States**

**Note: (Orders of 10 units or more require factory direct installation to validate warranty)**

- MANUFACTURER / GENERAL INFO.: **Models: BP- 350** (6 ft.-14ft. wide x 16 ft. high) & **BP- 450 HD** (14 ft.-24 ft. wide x 16 ft. high) Aluminum & Glass Sectional Garage Doors: Full Vision Type or Obscured Vision Type manufactured by **bp - Glass Garage Doors** in Temple City, CA - Toll Free (877) 442-1716 An established manufacturer with 55 years experience specializing in Glass Garage Doors
- METAL / FRAMES: All sections are constructed of **bp** - extruded aluminum alloy. The tensile strength is a minimum of 38 ksi, and approximately double the strength of standard 6063-T5 aluminum alloy. All rails are heat treated to maximum hardness as per Aluminum Association Standards. **Model BP- 350:** (6 ft.- 14 ft. wide x 16 ft. high) has a wall thickness of .080 inches **Model BP- 450 HD:** (14 ft.- 24 ft. wide x 16 ft. high) has a continuous wall thickness of .225 inches at key structural load points, an imbedded concealed stiffening strut at .135 inches, and auxiliary concealed stiffening struts at .250 inches for doors 17 ft.- 24 ft. wide.
- STILES AND RAILS: **Model BP- 350:** Top rails, bottom rails, and end stiles are 3-1/4 inches wide. **Model BP- 450 HD:** Top & Bottom rails are 5-3/8 inches wide and end stiles are 3-1/4 inch wide Horizontal meeting rails have a combined width of 2-3/4 inches. Vertical intermediate center mullions are 1-1/2 inches wide. 5/16 inch thru-bolts, nuts, and washers are used to rigidly secure all stiles and rails.
- FINISH: All rails are standard clear anodized at least 4 mills thick for a permanent luster finish. Powder coated colors must be chosen from the RAL European color standard. (Optional) (Custom paints and coatings will be considered & approved on an individual basis only)
- DOOR THICKNESS: 1-3/4 inches thick.
- JOINTS: All joints are mitered to form a tight and smooth fit with the door rails.
- COUNTER BALANCE: Galvanized torsion springs, head-plates, and center spring supports are mounted on a continuous galvanized torsion bar and calculated to exact weight and travel of each door. Cable drums are of die cast aluminum and are paired categorically for the track type specified. Lift cables are of high tension galvanized aviation type. (1/8 inch or 3/16 inch as req. by weight) Stainless Steel springs, and related hardware can be substituted in lieu of galvanized (Optional)
- TRACK: 2 inch x 15ga. galvanized continuous angle mounted (15 inch or 20 in. radius x 600lb max.)  
3 inch x 12ga. galvanized continuous angle mounted (15 inch radius x 1200lb max.)  
3 inch x 12ga. Stainless Steel continuous angle mounted (15 inch radius x 1400lb max) (Optional)  
All tracks are tapered to insure a weather-tight fit when in the closed position.  
(See "Track Selection Guide" for headroom requirements on drawing 5 of 5 to specify track type)





## **bp - GLASS GARAGE DOORS & ENTRY DOORS**

A Division of Bryce Parker Co.

License Number. 750084

- HINGES:** **bp** - Stainless Steel 12ga. universal and offset type, are graduated at each section to insure weather tight fit. **bp** - Stainless Steel hinges do not require lubrication. (Standard)
- ROLLERS:** 2 in. **bp** - Stainless Steel, polymer coated tire, sealed, 500 lb, precision bearing, roller (Standard)  
3 in. **bp** - Zinc dipped, rubber coated, sealed, 600 lb, precision bearing, roller (Standard)  
3 in. **bp** - Stainless Steel, polymer coated tire, sealed, 700 lb, precision bearing, roller (Optional)  
**bp** - Stainless Steel sealed rollers do not require lubrication. (Standard)
- WEATHER-STRIP:** A Santoprene gasket is applied at the factory the full length of the bottom section and at each end of the top rail where contact is made with the bumper spring.  
**bp** - Architectural perimeter weather-stripping is made of a three part extruded aluminum and Santoprene system, which conceals the fasteners with a snap cover. The **bp** - Architectural perimeter weather stripping can be exterior or interior mounted for a clean Architectural finish.
- OPERATORS:** Manual chain-hoists are compatible with standard, roof pitch, high-lift, and full vertical lift tracks. Electric operation must be specified with the following: Push button station, key button station, and/or remote control operation. Auto reversing safety sensors are required for residential use and optional for most commercial applications. Operator specifications are per **bp - Glass Garage Doors** factory recommendations; based on weight, height, track type, and as required per code. (Note: Low headroom & zero-clearance track must be electronically operated for safety)
- GLAZING:** Glass, aluminum, or specialty panels ranging from: 1/16 in. - 1/4 in. / 1.5mm - 6mm thickness are encased in vinyl moldings, held in place by aluminum snap-in beads, and are designed to be easily removed and replaced in case of glass or panel breakage.  
(Note: 54 inch wide x 24 inch high maximum panel limits)
- GLASS SPECIFICATIONS:** Glass type must be specified with the following: Transparent or obscured frosted, tempered or laminated safety glass, and clear or color tinted hues (Visit us online to view glass panel samples) **Tempered Glass** meets the quality and strength requirements of ASTM C 1036 and ASTM 1048 for condition A, Quality q3, and Kind FT (Full Tempered). Tempered glass also meets the safety criteria of CPSC 16 CFR 1201 Categories 1 & 2, ANSI Z97.1, and qualifies as the glazing material for use in hazardous locations.  
**Laminated Safety Glass** (0.030 PVB or thicker interlayer with two lites of glass) also meets the safety criteria CPSC 16 CFR 1201 Categories 1 & 2, ANSI Z97.1, and ASTM C 1172 Standard Specifications for Laminated Architectural Flat Glass. 1/4" laminated glass has an STC of 35.
- OPTIONAL:** 1/8 in.- 1/4 in. custom glass panels, 1/16 in.- 1/4 in. aluminum or specialty panels, ventilation louvers, interior-mounted security bars, a variety of powder coated colors from the RAL color standard. 3 in. x 12ga. Stainless Steel track, springs, and related hardware can also be requested. Tapered top and/or bottom sections (for use when floor or header is out of square or sloping), custom panel locations, widths, and varying sections heights within the same door can also be accommodated to meet custom designs. Factory-Direct installations are provided in CA, AZ, NV, FL, and optional anywhere in the USA.

VIEW GLASS PANEL OPTIONS & ADDITIONAL INFORMATION ON THE WEB: [www.GlassGarageDoors.com](http://www.GlassGarageDoors.com)

# bp Glass Garage Doors

## "The Architect's Choice"

### bp Advantages (Our Door)



### Competitors' Disadvantage (Competitor Door)



- ➡ **BP- Aluminum Alloy:** High tensile strength at 38 ksi and double the rigidity of standard alloy.
- ➡ **Standard (6063) Aluminum Alloy:** Much weaker and 1/2 the tensile strength of BP - Aluminum Alloy.
- ➡ **Narrow Intermediate Mullions:** Cleaner architectural lines, showing more glass and less structure.
- ➡ **Wide Intermediate Mullions:** Shows less glass, more frame, and is visually less appealing (See above, marked by arrows).
- ➡ **Heavier Wall Thickness:** Allows for more weight and wider glass panels, without deflection. (Ex. Our door has 250 lbs of aluminum vs. a competitor's 100 lbs.)
- ➡ **Thinner Wall Thickness:** Causes vertical and horizontal deflection, which requires stiffening struts that can be seen through the glass. (See above, as marked by red arrows)
- ➡ **Factory Direct Manufacturing Speed:** By strictly focusing on Glass Garage Doors and Entry Doors, our manufacturing time is the best in the industry.
- ➡ **Not Factory Direct:** Orders are placed through a distributor, and can take 6-10 weeks.
- ➡ **Factory Direct Installation (CA, AZ, NV, FL & Optional in all other states):** A factory specified installation produces a smoother and longer lasting garage door.
- ➡ **Not Factory Installation:** An installer other than the factory may not have the expertise or take the time needed to meet a factory specified installation.
- ➡ **Customization:** Our customers can request specific panel sizes, quantities, height of each section, tapered bottom / top sections, and reveal of frame around the door.
- ➡ **Limited Customization:** Our competitors are not set up to accommodate customers' special requests.
- ➡ **Complementing Entry Doors:** We can manufacture Entry Doors and Side Gates with single or multiple glass panels to match your Glass Garage Door. Custom Lock hardware can also be accommodated.
- ➡ **No Complementing Entry Doors:** Our competitors are not set up to accommodate customers' special requests.

- ➡ **Stainless Steel 11-gauge Hinges:** Laser cut, heavy duty hinges for an extra clean Architectural finish. Note: Stainless Hinges do not require lubrication.
- ➡ **Standard Mild Steel Hinges:** Thinner 14 to 18 gauge galvanized hinges are weaker, may break under typical glass weights, and require constant lubrication.
- ➡ **Stainless Steel Rollers:** Heavy Duty, sealed, water resistant rollers of 500lb load capacity each, with no lubrication required.
- ➡ **Standard Metal or Nylon Rollers:** 50lb. load capacity each, non sealed, and require constant lubrication.
- ➡ **Zinc Plated or Stainless Steel Springs:** Rust resistant and do not require lubrication.
- ➡ **Standard Springs:** Raw oil tempered springs rust and require constant lubrication.
- ➡ **Concealed Stiffening Struts:** Stronger, lighter, and are hidden as part of the door rail, which won't be seen from the outside.
- ➡ **Standard Metal Struts:** Weak, heavy, surface mounted, and can be seen through glass. (See above, marked by arrows).
- ➡ **Custom Glass and Frame Colors:** Over 200 types of custom glass, powder coated colors, and panels to choose from.
- ➡ **Limited Glass and Color Options:** A few standard glazing types and color options.
- ➡ **Architectural Weather Stripping:** Made from 3 part extruded aluminum, commercial Santoprene, and installed with concealed fasteners.
- ➡ **Typical Residential Weather Stripping:** Made entirely of poor quality vinyl with exposed nails which rust.
- ➡ **Custom Tapered Sections:** Top and/or bottom sections/panels for out of square driveways and openings. (See picture gallery)
- ➡ **Standard Rectangular Sections:** May otherwise leave large gaps at the floor and header.
- ➡ **Commercial Duty Hardware:** High capacity, long lasting, with minimum lubrication or service required.
- ➡ **Standard Residential Hardware:** Low capacity , which wears out quickly; requiring constant lubrication, and costly service calls.
- ➡ **Extremely Quiet Operation:** Due to the use of premium components, noise-causing friction is dramatically reduced.
- ➡ **Typical Noisy Operation:** Attributed to cheap components, and out of square track; which cause friction and costly repairs.
- ➡ **What Makes bp the best:** In addition to the reasons above, proprietary fabrication methods and classified materials have been incorporated to produce our highly regarded glass doors.
- ➡ **Why Others Can't Compare:** Manufacturers that mass-produce a wide variety of other types of doors are catering to a less discriminating market. In most cases, quality is compromised for quantity.

**You get what you pay for!** Quality engineered and tested designs for over 55 years in business!

---

### The Experience :

Purchasing a sectional garage door from us is just a lot simpler. We manufacture, install, and warranty our own product.

 RAL 1000 49/15200	 RAL 1015 49/15320	 RAL 1033 49/22240	 RAL 3000 49/33120	 RAL 3015 49/33670	 RAL 4005 49/42780	 RAL 5007 49/42250	 RAL 5020 49/44270	 RAL 6007 49/52860	 RAL 6015 49/52790	 RAL 6024 49/52680	 RAL 7003 49/72600	 RAL 7021 49/72540	 RAL 7037 49/72480	 RAL 8007 49/66120	 RAL 8025 49/66050
 RAL 1001 49/15190	 RAL 1016 49/22520	 RAL 1034 49/22910	 RAL 3001 49/31120	 RAL 3016 49/31980	 RAL 4006 49/32090	 RAL 5008 49/42260	 RAL 5021 49/41190	 RAL 6008 49/53240	 RAL 6016 49/51020	 RAL 6025 49/52670	 RAL 7004 49/72300	 RAL 7022 49/72850	 RAL 7038 49/72470	 RAL 8008 49/66110	 RAL 8028 49/66500
 RAL 1002 49/22590	 RAL 1017 49/22510	 RAL 2000 49/24570	 RAL 3002 49/31110	 RAL 3017 49/31060	 RAL 4007 49/32540	 RAL 5009 49/42270	 RAL 5022 49/42390	 RAL 6009 49/52840	 RAL 6017 49/52780	 RAL 6026 49/52660	 RAL 7005 49/72590	 RAL 7023 49/72530	 RAL 7039 49/71020	 RAL 8011 49/66100	 RAL 9001 49/10016
 RAL 1003 49/22580	 RAL 1018 49/21830	 RAL 2001 49/24560	 RAL 3003 49/31100	 RAL 3018 49/31050	 RAL 4008 49/32280	 RAL 5010 49/42280	 RAL 5023 49/44650	 RAL 6010 49/52830	 RAL 6018 49/52720	 RAL 6027 49/50990	 RAL 7006 49/72380	 RAL 7024 49/72870	 RAL 7040 49/75470	 RAL 8012 49/66090	 RAL 9002 49/70520
 RAL 1004 49/22570	 RAL 1019 49/13660	 RAL 2002 49/24550	 RAL 3004 49/33900	 RAL 3020 49/31040	 RAL 4009 49/34740	 RAL 5011 49/43180	 RAL 5024 49/44660		 RAL 6028 49/52650	 RAL 7008 49/72570	 RAL 7026 49/72880	 RAL 7042 49/73250	 RAL 8014 49/65230	 RAL 9003 49/11400	
 RAL 1005 49/22560	 RAL 1020 49/22500	 RAL 2003 49/24540	 RAL 3005 49/31900	 RAL 3022 49/33700	 RAL 4010 49/40490	 RAL 5012 49/43170	 RAL 6000 49/53160		 RAL 6029 49/52640	 RAL 7009 49/72770	 RAL 7030 49/72890	 RAL 7043 49/72460	 RAL 8015 49/63040	 RAL 9004 49/81950	
 RAL 1006 49/22550	 RAL 1021 49/22280	 RAL 2004 49/24530	 RAL 3007 49/31910	 RAL 3027 49/33660	 RAL 5000 49/42200	 RAL 5013 49/42310	 RAL 6001 49/52900		 RAL 6032 49/52630	 RAL 7010 49/72560	 RAL 7031 49/72520	 RAL 7044 49/75480	 RAL 8016 49/66080	 RAL 9005 49/82830	
 RAL 1007 49/22540	 RAL 1023 49/22490	 RAL 2008 49/24340	 RAL 3009 49/31920	 RAL 3031 49/34730	 RAL 5001 49/42210	 RAL 5014 49/42320	 RAL 6002 49/52890		 RAL 6033 49/55010	 RAL 7011 49/72790	 RAL 7032 49/72910	 RAL 8000 49/66170	 RAL 8017 49/65220	 RAL 9010 49/11500	
 RAL 1011 49/15180	 RAL 1024 49/22480	 RAL 2009 49/24360	 RAL 3011 49/31090	 RAL 4001 49/43160	 RAL 5002 49/42220	 RAL 5015 49/42330	 RAL 6003 49/52880	 RAL 6011 49/52820	 RAL 6019 49/51000	 RAL 6034 49/55020	 RAL 7012 49/71180	 RAL 7033 49/72510	 RAL 8001 49/66160	 RAL 8019 49/65490	 RAL 9011 49/80540
 RAL 1012 49/22530	 RAL 1027 49/22470	 RAL 2010 49/24520	 RAL 3012 49/31940	 RAL 4002 49/51030	 RAL 5003 49/42230	 RAL 5017 49/40760	 RAL 6004 49/50980	 RAL 6012 49/51540	 RAL 6020 49/52710	 RAL 7000 49/72700	 RAL 7013 49/72550	 RAL 7034 49/72500	 RAL 8002 49/66150	 RAL 8022 49/63080	 RAL 9016 49/11340
 RAL 1013 49/11280	 RAL 1028 49/22460	 RAL 2011 49/24580	 RAL 3013 49/31950	 RAL 4003 49/32270	 RAL 5004 49/42240	 RAL 5018 49/41140	 RAL 6005 49/50670	 RAL 6013 49/52810	 RAL 6021 49/52700	 RAL 7001 49/72710	 RAL 7015 49/72820	 RAL 7035 49/73510	 RAL 8003 49/66140	 RAL 8023 49/66070	 RAL 9017 49/80550
 RAL 1014 49/15170	 RAL 1032 49/22450	 RAL 2012 49/24690	 RAL 3014 49/31080	 RAL 4004 49/31020	 RAL 5005 49/43190	 RAL 5019 49/42360	 RAL 6006 49/52870	 RAL 6014 49/52800	 RAL 6022 49/52690	 RAL 7002 49/72720	 RAL 7016 49/72830	 RAL 7036 49/72950	 RAL 8004 49/66130	 RAL 8024 49/66060	 RAL 9018 49/72490

NOTE: RAL is the most popular Central European Color Standard used today.

The colors in this chart are ONLY displayed to give an overview of the colors available. This chart is a reproduction of the RAL color standard printed from [www.tigerdrylac.com](http://www.tigerdrylac.com). Variations in computer monitors, video cards and color printers will cause variations from the actual colors. This chart is to be used as a guide for color planning and specification only.

# Sample Colors

## *Special Effect Powder Coating Options*



9017 ACACIA DS403



9026 CHERRY DS403



9026 CHERRY DS402



9052 OAK ASSI DS409



9052 OAK ASSI DS414



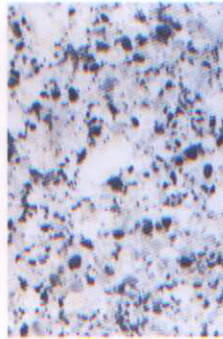
9052 OAK ASSI DS403



9053 DOUGLAS DS402



9103 KN PINE DS402



9105 WHITE GRANITE DS404



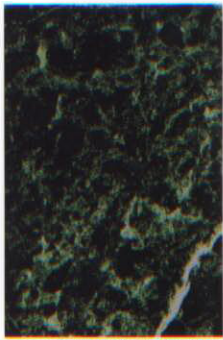
9128 DK WALNUT DS403



9173 BURLWOOD DS403



9052 OAK ASSI DS402



9065 GRN MARBLE DS411/410



9017 ACACIA DS402



9017 ACACIA DS406



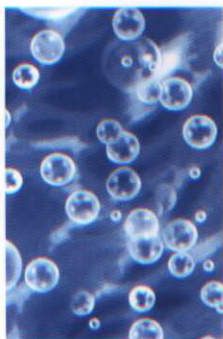
9061 CHERRY FLAME DS403



9173 BURLWOOD DS411/410



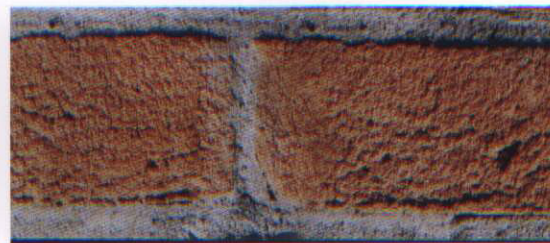
9057 MARBLE DS404



51932 BUBBLE DS404



9053 DOUGLAS DS403

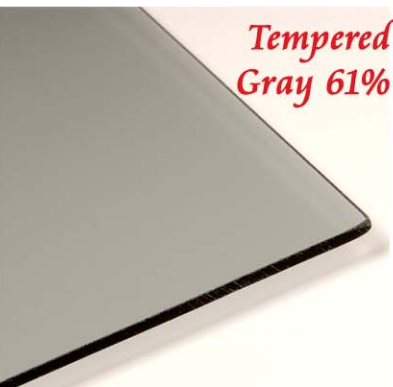
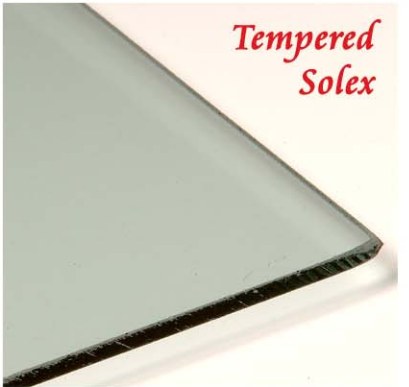
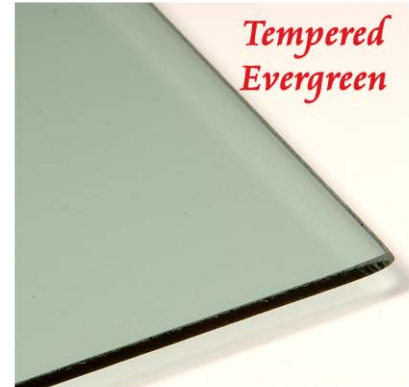
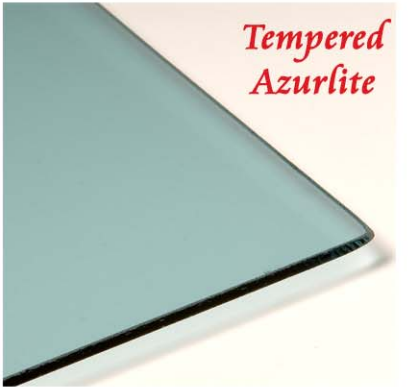
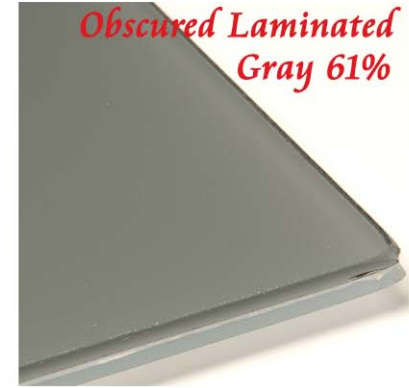
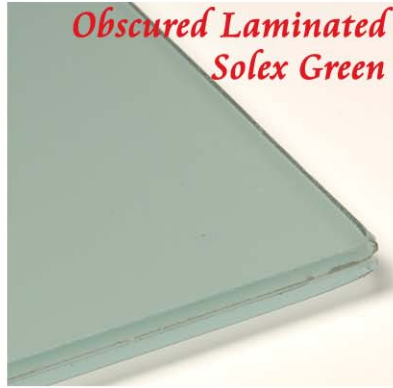
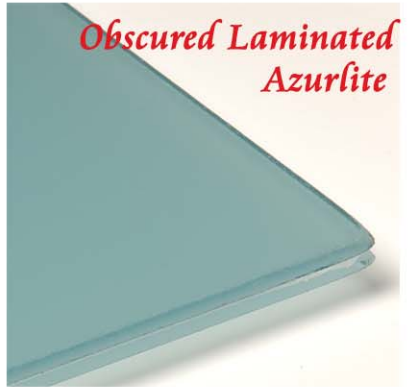


BRICKS

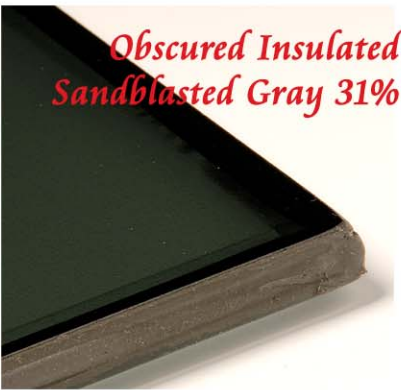
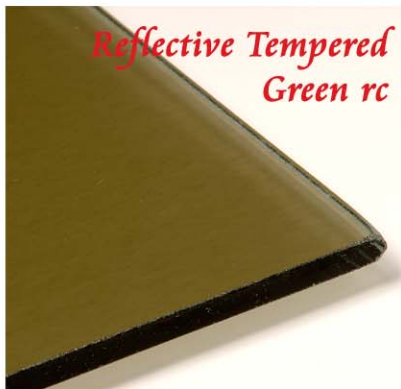
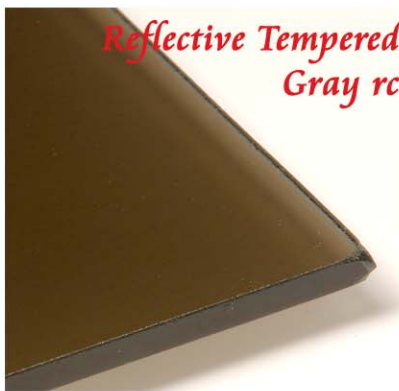
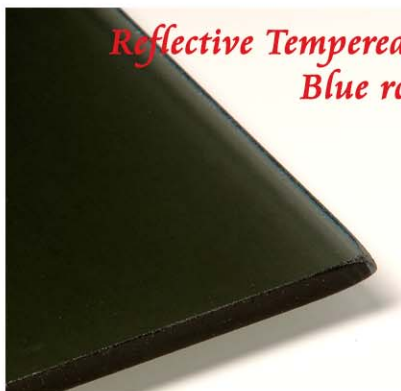
### **About Color:**

The color illustrations shown are as accurate as photography and printing processes allow. Final selection of colors should be made from physical samples.

*G  
l  
a  
s  
s  
  
P  
a  
n  
e  
l  
  
O  
p  
t  
i  
o  
n  
s*



*G  
l  
a  
s  
s  
  
P  
a  
n  
e  
l  
  
O  
p  
t  
i  
o  
n  
s*

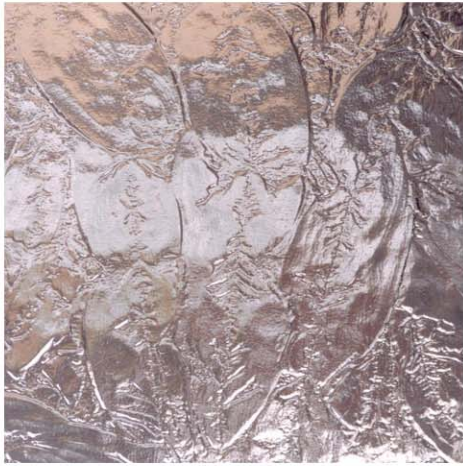




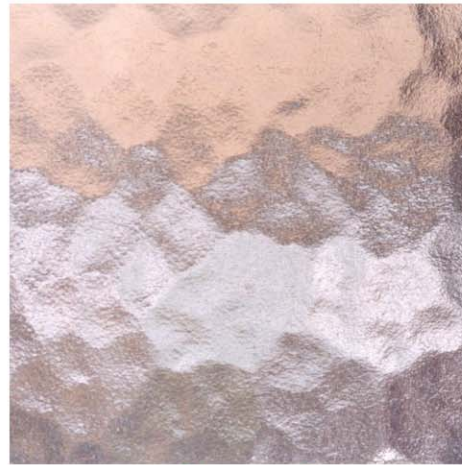
*Tempered Double Gluechip*



*Tempered Rain Glass*



*Tempered Gluechip*



*Tempered Spraylite Aqua*



*Tempered Crystal Ice*



*Tempered Reeded*

*G  
l  
a  
s  
s  
  
P  
a  
n  
e  
l  
  
O  
p  
t  
i  
o  
n  
s*