

# ATHLETIC EQUIPMENT STORAGE AND LOCKERS



**Old Dominion University**  
Norfolk, Virginia

Products Shown: GearBoss Shelving with Worksurface, Lock Box & Drawer, GearBoss Team & X-Carts, and GearBoss TransSPORT Cart



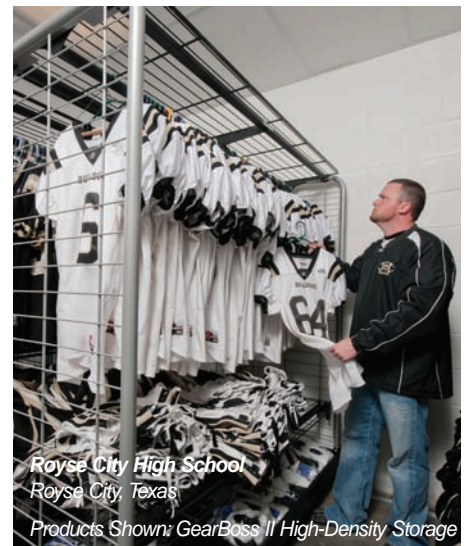
**Monmouth University**  
West Long Branch, New Jersey

Products Shown: GearBoss Team Room Lockers



**Lake Nona High School**  
Orlando, Florida

Products Shown: GearBoss AirPro Lockers



**Royse City High School**  
Royse City, Texas

Products Shown: GearBoss II High-Density Storage





Lakeville North High School  
Lakeville, Minnesota

## FEWER AISLES CREATE MORE ROOM IN LESS SPACE



## HIGH-DENSITY STORAGE LETS YOU MANAGE YOUR SPACE FOR MAXIMUM EFFICIENCY WITHOUT ADDING SQ. FT.

With GearBoss® by Wenger you can store more gear in less space while dramatically improving organization, security, sanitation and mobility. The high-density design of GearBoss uses modular carts installed on a rail. Empty aisles are gone and the cubic storage potential of the space is maximized. By putting GearBoss into your plans you will save construction dollars and create a storage room that will be a functional point of pride for the athletic program.

- Carts move on the rail eliminating unused aisle space
- A more economic use of square footage. Stores 50% more than static storage units
- Team Carts come off the rail to move and store gear around the facility
- More organized storage
- Better inventory management
- Better sanitation and air flow with proper ventilation
- More secure storage prevents theft & unintentional borrowing
- Modular system is easily rearranged and reconfigured
- Wide assortment of accessories
- Creates a storage area that reflects the pride of the sports program
- Multiple standard color options for painted grilles and laminate doors and closures

## TEAM CART AND X-CART HIGH-DENSITY STORAGE



Northridge High School  
Middlebury, Indiana

GearBoss® systems install easily with the flexibility to work in almost any space.



R.B. Stall High School  
North Charleston, South Carolina

## AND LOTS OF OPTIONS

**Specialized Accessories** can tailor a cart to the specific needs and equipment of any program. Your GearBoss representative can help you select the right accessories for each cart.

- Cubby System
- Shelves
- Shelf Dividers & Shelf Lips
- Garment Bars
- Attic Units
- Helmet Hangers
- Shoulder Pad Hangers and Stackers



### Panel Closures and Doors

offer added security and are customizable with a variety of laminate colors. It's also an excellent space for team logos.



**Aircraft-grade aluminum knuckles** hold wire grills in place and allow for locking carts together for security.



**Retractable Guides and Swivel Casters** on the Team Cart allows the cart to leave the track and transport easily.



**Hanging Brackets** attach easily to the wire grills to support garment bars, shelves and more for infinite flexibility.

## GEARBOSS® II HIGH-DENSITY STORAGE



Royse City High School  
Royse City, Texas

This dual-track system gives you the same space-saving organization as our Team Carts and X-Carts in a simplified version that remain on the track with a budget-friendly price. GearBoss II stores 50% more than static storage units and you will gain more control over the time and money lost to poor organization, lax security and misplaced inventory. This storage system is simply a better way to care for your equipment investments.

## GEARBOSS® SPORTCART™ AND TRANSPORT™ CART



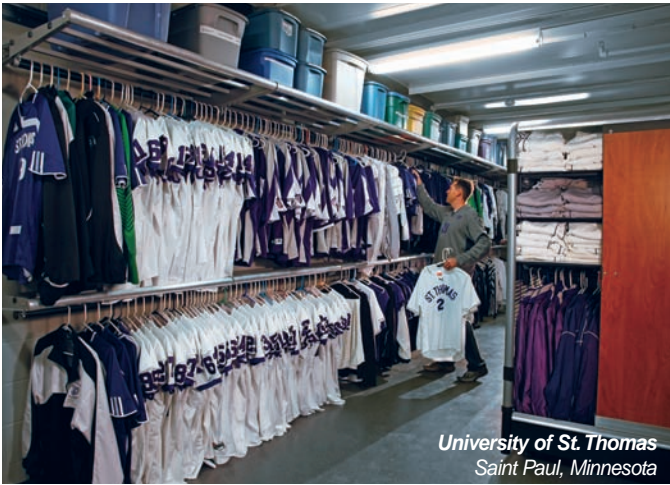
Northridge High School  
Middlebury, Indiana

GearBoss® SportCarts™ are designed for use in small spaces and for sports that require less storage such as the trainer's room and concession areas. The nimble SportCart will navigate narrow hallways, shorter door openings and most elevators.

GearBoss® TranSport™ Cart is a rugged equipment cart that can carry the big stuff out to the field. Plus it reconfigures to create a sturdy table for use as a work surface, sideline table, trainer's table with 1000 lbs load capacity.



# GEARBOSS SHELVING



University of St. Thomas  
Saint Paul, Minnesota

GearBoss Shelving is the affordable, flexible, durable solution for shelving and storage needs. It's durability and functionality make it perfect for storing athletic equipment. The cantilever design optimizes overhead space and keeps the floor free from supports for extra room. And the system is so versatile it can be configured to your specific needs to make sure you get the maximum storage space.



Prosper High School  
Prosper, Texas

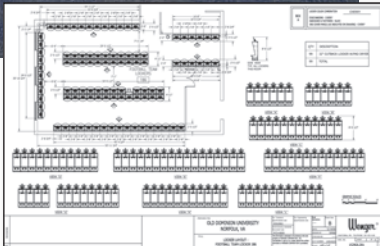


Chanhassen High School  
Chanhassen, Minnesota

# GEARBOSS TEAM ROOM LOCKERS



Old Dominion University  
Norfolk, Virginia



The team room is essential for recruiting success. It has to be highly functional. Our GearBoss® lockers will work with your facility design to make a first-class statement that sets your program apart. They're incredibly durable — made with poly-laminated surfaces and PVC edge banding. They promote a healthier environment — treated with antimicrobial nano-silver technology that will last the life of the product. And the design and optional fans create improved airflow.

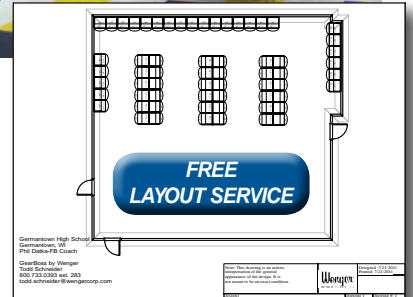


# GEARBOSS AIRPRO™ LOCKERS



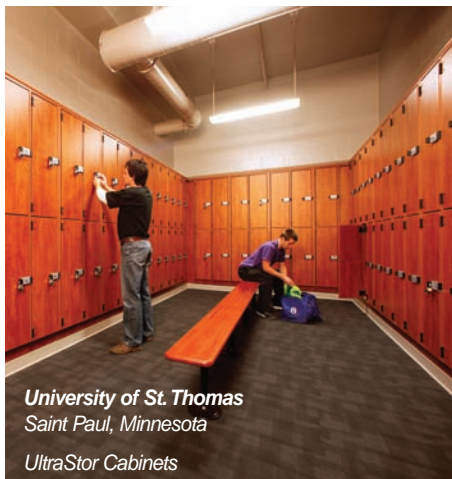
Germantown High School  
Germantown, Wisconsin

A new space saving locker design that keeps your gear more sanitary. Designed with integrated benches, AirPro lockers free up valuable real estate, creating extra floor space and a more open feel. Plus, AirPro's durable metal grid construction allows for maximum airflow and minimum hassle. They're easy to clean and laminated surfaces are more sanitary with treated antimicrobial nano-silver technology that will last the life of the product. With new AirPro lockers, your team room problems are solved.





# CUSTOM CASEWORK AND PASS-THROUGH CUBBIES



University of St. Thomas  
Saint Paul, Minnesota  
UltraStor Cabinets



Coastal Carolina University  
Conway, South Carolina  
Pass-Through Cubbies



Athlete Side Issue / Laundry Side

Wenger custom casework solutions bring a higher level of function and aesthetics to athletic spaces. From lockers to pass-through laundry cubbies, Wenger will customize casework to enhance your designs. All of our solutions begin with high-quality standards including our patented polyethylene shelves designed to provide an easy-to-clean surface and to enhance air-flow. We use a polyester laminate which out-performs cheaper melamine solutions. Antimicrobial laminate options can add another line of defense against sanitation issues. Bolt-through construction means that doors and connection points will never pull out and replacement doesn't require breaking apart glue and dowel construction.

We can provide a variety of lock options from patented slide-latches designed to work with hasp locks to electronic code locks.

If your designs call for a specialized solution, don't hesitate to call.

## WENGER HAS YOUR GAME PLAN FOR ORGANIZING YOUR SPORTS EQUIPMENT STORAGE SPACE

Athletic storage areas should be some of, if not the most, specialized storage area in the school. Wenger has studied these areas in depth to bring you consultation on the critical requirements of the space.

- Storage area sizes
- Sanitation requirements
- Security
- Traffic flow
- Equipment movement
- Key adjacencies



Athletic Facility Planning Guide

The Space & Cost comparison shows you how GearBoss stacks up against traditional storage rooms to save money and square footage while improving all aspects of athletic equipment storage.



Complete information for the Architect on all Wenger products for Music, Theatre and Athletics application information and typical drawings and plans.

Complete information for the Interior Designer on all Wenger products for Music, Theatre and Athletics along with product samples, colors and fabrics.

Wenger is now  
**GREENGUARD**  
Certified



Children & Schools

X-Carts  
Team Carts  
GearBoss II High-Density Storage

SportCarts  
GearBoss Shelving  
AirPro Lockers



Registered  
AIA/CES provider.

USGBC and related logo is a trademark owned by the U.S. Green Building Council and is used by permission.

©2011 Wenger Corporation  
Printed in the U.S.A./9-11/2M/LT0202E

**WENGER CORPORATION**  
555 Park Drive, PO Box 448  
Owatonna, MN 55060-0448  
Phone 800.4WENGER (493-6437)  
Fax 507.455.4258  
Parts & Service 800.887.7145

**WENGER CORPORATION**  
**CANADA OFFICE**  
Phone 800.268.0148

**WORLDWIDE**  
Phone 1.507.455.4100  
Fax 1.507.774.8576

**WEB SITE**  
[www.wengercorp.com](http://www.wengercorp.com)

**Wenger**  
Your Performance Partner