

Scissor Lift Submittal & Planning Sheet for SL Series

by **DRAPER**

U.S. Patent D395,909

Planning sheet submission required with your order or request for quotation. Please mark appropriate response to each numbered item (front and back)

Specifications—Scissor Lift SL

_____ video projector lifts for projectors weighing up to 100 lbs. White powder coat finish. Projector bolts onto operating pan, or mounts to pan with mounting bracket (by others). Electrically operated 110-120V AC, 60 Hz. UL recognized gearmotor, with metal chain drive system, to be lifetime lubricated. Projector to be suspended from steel pan supported by steel scissor arms and operated by two, 1/8" aircraft cables with 2000 foot/pounds tensile strength per cable.

Equipped with 3 sets of stabilizing scissors, positioned on the left, right, and rear sides. Also equipped with fail-safe inertial safety belt system and Cable Management System with projector power outlet. Factory set limit switches to automatically stop travel at store, show, and service positions. Single Station Low Voltage Control, standard, consists of one 3-button wall switch switch to lower lift from "stored" to "show" position, and one momentary key switch to lower lift to "service" position.

Optional Environmental Air Space Housing: Consists of suitable steel panels for use in return Environmental Air Space situations. Includes trim ring for ceiling opening. Four sizes available.

Optional ceiling closure panel: Finished in white baked textured powder coat, shall descend smoothly with projector. Four sizes available.

Ceiling Finish Kit: Finished white. Trims ceiling opening when required. Consists of trim ring and closure panel. Four sizes available.

Factory-installed control cables available.

Please Note: The Scissor Lift SL should be specified in conjunction with a Draper motorized screen.

Optional Ceiling Access Door: Provides access to projector and lift when unit is installed above hard ceiling. Two styles: White painted finish or accepts ceiling tile.

Optional Universal Projector Mount: Fits most projectors up to 26 lbs. Tilt, yaw and pan adjustment.

Downloadable 3-part specifications are available at www.draperinc.com. U.S. Patent Number D395,909.

- ① **Select one model based on the maximum exact distance you need the projector to descend from "store" position to "service" position.**

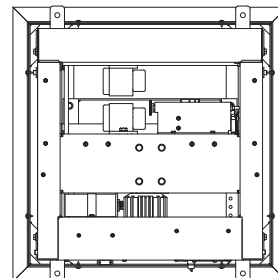
Draper does not recommend setting show position at the maintenance/ service position. For example, if you wish to have 8' Show position, order a lift with at least a 10' maintenance position.

Scissor Lift—SL Series

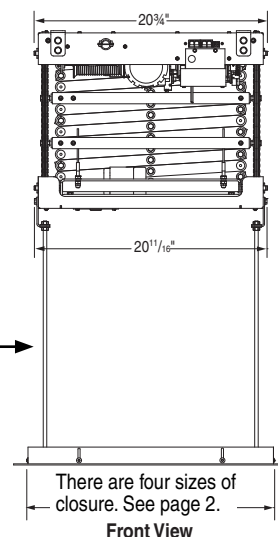
Quantity	Model	Table A	
		Closed Height	Extended Height
<input type="checkbox"/> 4 ft.—Model SL4	SL4	8"	4'
<input type="checkbox"/> 6 ft.—Model SL6	SL6	10"	6'
<input type="checkbox"/> 8 ft.—Model SL8	SL8	12"	8'
<input type="checkbox"/> 10 ft.—Model SL10	SL10	14"	10'
<input type="checkbox"/> 12 ft.—Model SL12	SL12	16"	12'

- ② **Standard, factory set "show" position is 36" below "store" position. "Show" position can be adjusted after installation. For "show" position of more or less than 36", list show position: _____**

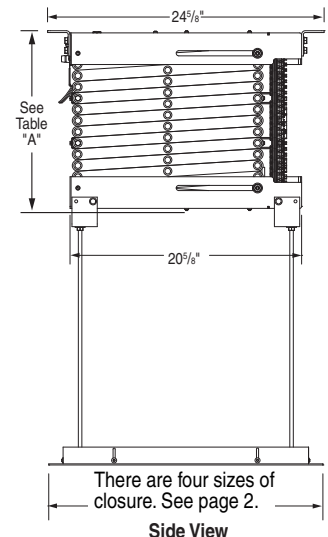
16" threaded rod included. Can be cut down to match projector and mount dims. →



Top View



Front View



Side View

For drawings/dimensions with Environmental Air Space Housing, see page 3.

DRAPER SALESPERSON: _____

CUSTOMER CONTACT: _____

SIGNATURE: _____



411 S. Pearl St., Spiceland, IN 47385 USA ■ 765-987-7999
www.draperinc.com ■ fax 765-987-7142

Copyright © 2011 Draper Inc. Form ScissorLiftSL_Sub-PlanSheet11-R6 Printed in U.S.A.

(Continued on Page 2)

DEALER NAME: _____

PROJECT NAME: _____

P.O. #: _____

DATE: _____

③ **Select Optional Accessories**

- Optional Ceiling Access Door (2' x 2') to allow access above finished ceiling (highly recommended).
 - White Painted Finish Accepts Ceiling Tile
- Optional Environmental Air Space Housing: optional ceiling closure panel not included (see dimensional drawings below).
 - "B" "E" "SL" "U"
- Optional ceiling closure panel (see dimensional drawings on page 3).
 - "B" "E" "SL" "U"
- Optional ceiling finish kit: consists of ceiling closure panel and mating trim kit to finish ceiling opening (see dimensional drawings on page 3).
 - "B" "E" "SL" "U"
- Optional Universal Projector Mount (max. load 26 lbs).

④ **Select factory installed hookup for RGB, Video and Projector Control?**

Yes No

What type of connectors do you need on **Inputs (to Projector)?**

- BNC How Many? _____
- 15 Pin HD How Many? _____
- RCA How Many? _____
- S-Video How Many? _____
- RS232 (DB9) How Many? _____
- Cat 5 How Many? _____
- Cat 6 How Many? _____

What type of connectors do you need on **Outputs (up at top of Lift)?**

- BNC How Many? _____
- 15 Pin HD How Many? _____
- RCA How Many? _____
- S-Video How Many? _____
- RS232 (DB9) How Many? _____
- Cat 5 How Many? _____
- Cat 6 How Many? _____

⑤ **Select Voltage:**

- 110-120V
- 220-230V

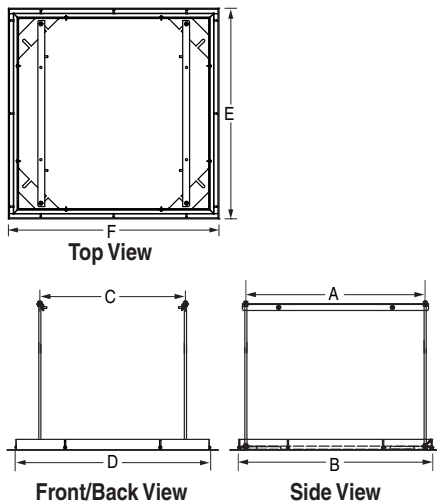
⑥ **Select Low Voltage Controls: This unit comes with one 3-Button Wall Switch and one Momentary Key Control. For other switching options, please select from below:**

- Replace 3-Button Wall Switch with optional second Momentary Key Control (SP-KSM)
- Optional Key Operated Power Supply Key Switch (On-off)
- Optional Wireless Remote Control (radio frequency transmitter & receiver) (Controls the "Show" position only)
- Optional Wireless Remote Control (infrared transmitter & receiver) (Controls the "Show" position only)
- Optional R2D7 RS232 interface for Serial Communication (Controls the "Show" position only)

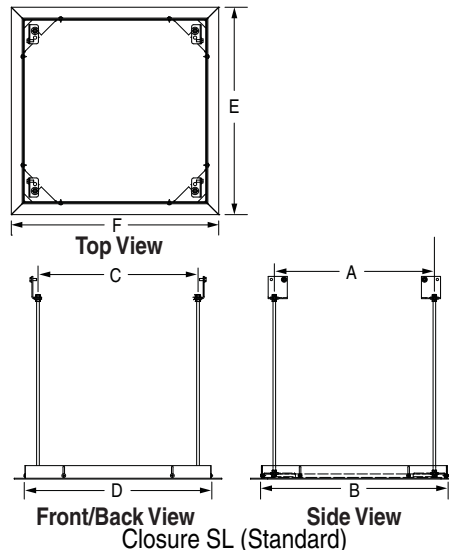
⑦ **Will this unit be controlled by other equipment?**

- No.
- Yes. What kind of equipment? _____

Optional Ceiling Closure



Closures B, E and U



Closure SL (Standard)

Optional Ceiling Closure Dimensions

Dim	Closure B	Closure E	Closure SL	Closure U
A	26"	25 ³ / ₄ "	18 ¹³ / ₁₆ "	27"
B	28 ³ / ₁₆ "	38 ⁷ / ₁₆ "	22 ¹ / ₁₆ "	35 ¹ / ₈ "
C	21 ¹ / ₈ "	25 ³ / ₄ "	18 ¹³ / ₁₆ "	31 ¹ / ₄ "
D	28 ³ / ₁₆ "	27 ¹⁵ / ₁₆ "	22 ¹ / ₁₆ "	35 ¹ / ₈ "
E	30 ⁹ / ₁₆ "	40 ¹³ / ₁₆ "	24 ³ / ₈ "	37 ¹¹ / ₁₆ "
F	30 ⁹ / ₁₆ "	30 ⁵ / ₁₆ "	24 ³ / ₈ "	37 ¹¹ / ₁₆ "

DRAPER SALESPERSON: _____

CUSTOMER CONTACT: _____

SIGNATURE: _____

Scissor Lift SL—Dimensions & Data

	SL4	SL6	SL8	SL10	SL12
Height of lift in closed position ¹	8" (21 cm)	10" (26 cm)	12" (31 cm)	14" (36 cm)	16" (41 cm)
Max. down travel (to service position)	4' (122 cm)	6' (183 cm)	8' (244 cm)	10' (305 cm)	12' (366 cm)
Net Weight (lbs)	88 (40 kg)	96 (44 kg)	104 (48 kg)	111 (51 kg)	118 (54 kg)
Estimated Travel Time ²	72 sec.	108 sec.	144 sec.	180 sec.	216 sec.

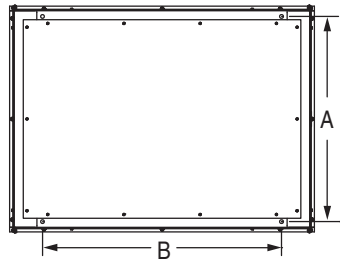
¹ Height of Scissor Lift in closed position only. Overall height of projector, plus optional mount, plus optional ceiling closure, plus optional Environmental Air Space Housing adds to overall height of equipment installed above ceiling.

² Based on travel speed of 90 inches per minute.

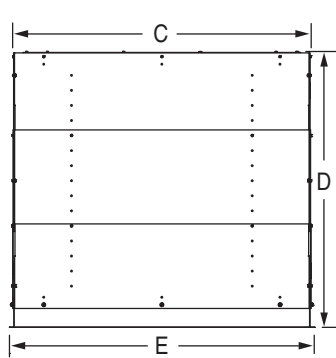
Maximum Projector Sizes

SL Product	Maximum Dimensions	Projector Size
SL w/SL closure	22 ¹ / ₃₂ " x 22 ¹ / ₃₂ "	18" x 18"
SL w/B Closure	30 ¹ / ₄ " x 30 ¹ / ₄ "	20" x 25"
SL w/E Closure	30" x 40 ¹ / ₂ "	24 ³ / ₄ " x 35"
SL w/U Closure	35 ¹ / ₈ " x 35 ¹ / ₈ "	27" x 30"

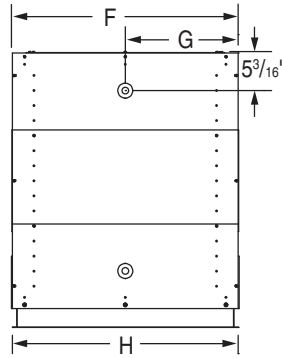
Optional Environmental Air Space Housing



Top View



Side View

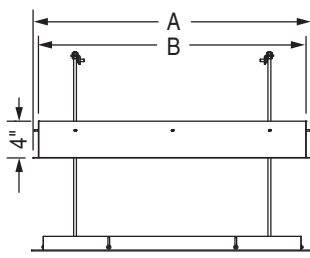


Front/Back View

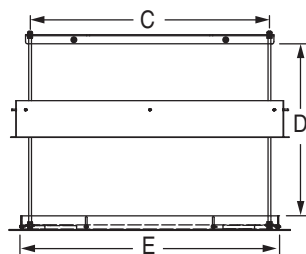
Environmental Air Space Housing Dimensions

Dim	B	E	SL	U
A	27 ¹ / ₂ "	27 ¹ / ₄ "	18 ⁹ / ₁₆ "	26 ¹ / ₂ "
B	22 ⁵ / ₈ "	31 ³ / ₄ "	20 ⁵ / ₁₆ "	34 ⁵ / ₈ "
C	29 ⁷ / ₁₆ "	39 ¹¹ / ₁₆ "	23 ¹ / ₁₆ "	36 ⁹ / ₁₆ "
D	16"-36 ⁵ / ₈ "	16"-36 ⁵ / ₈ "	16"-36 ⁵ / ₈ "	16"-36 ⁵ / ₈ "
E	30 ¹ / ₄ "	40 ¹ / ₂ "	24 ¹ / ₁₆ "	37 ¹¹ / ₁₆ "
F	30 ¹ / ₄ "	30"	23 ⁷ / ₈ "	37 ¹ / ₈ "
G	15 ¹ / ₈ "	15"	11 ⁵ / ₁₆ "	18 ¹¹ / ₁₆ "
H	30 ¹ / ₄ "	30"	24 ¹ / ₁₆ "	37 ¹¹ / ₁₆ "

Optional Ceiling Trim Kit Dims



Side View



Front/Back View

Ceiling Trim Kit Dimensions

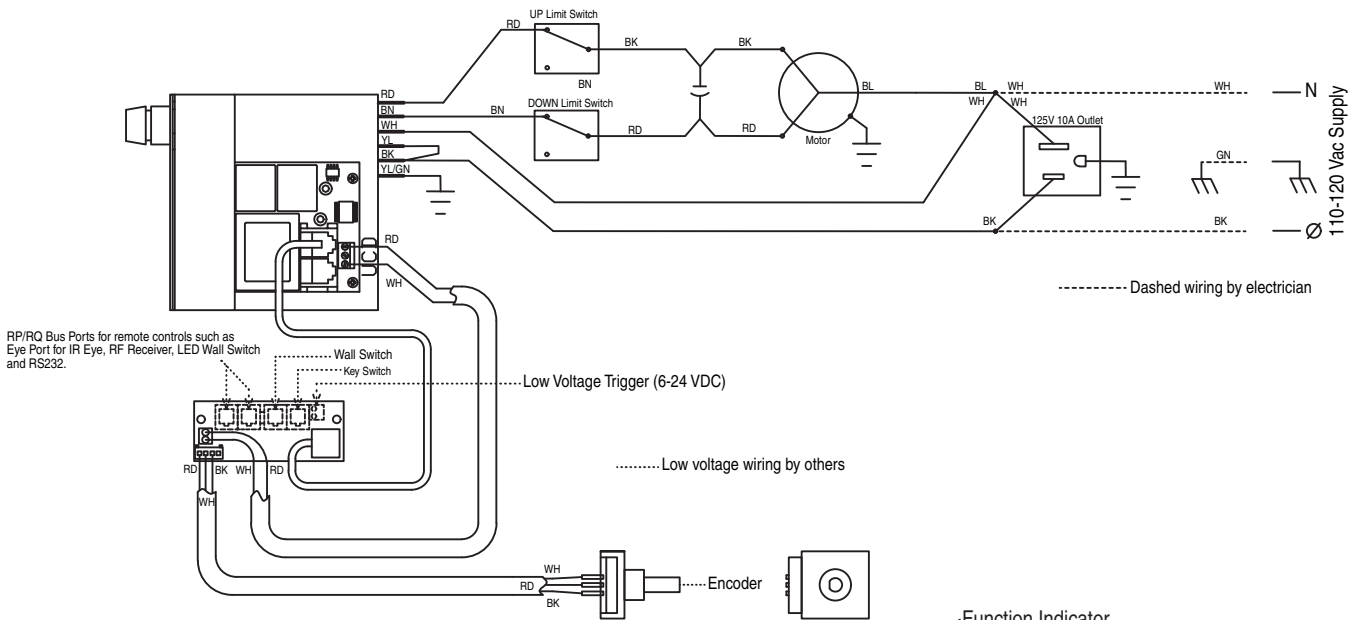
Dim	B	E	SL	U
A	30 ¹ / ₄ "	40 ¹ / ₂ "	24 ¹ / ₁₆ "	37 ³ / ₈ "
B	29 ¹ / ₈ "	39 ⁹ / ₈ "	22 ¹⁵ / ₁₆ "	36 ¹ / ₄ "
C	26"	25 ³ / ₄ "	18 ¹³ / ₁₆ "	27"
D	18 ¹¹ / ₁₆ "	18 ⁹ / ₁₆ "	19 ⁵ / ₈ "	18 ⁹ / ₁₆ "
E	28 ¹ / ₄ "	27 ¹⁵ / ₁₆ "	22 ¹ / ₁₆ "	35 ¹ / ₈ "

DRAPER SALESPERSON: _____

CUSTOMER CONTACT: _____

SIGNATURE: _____

Wiring Diagram



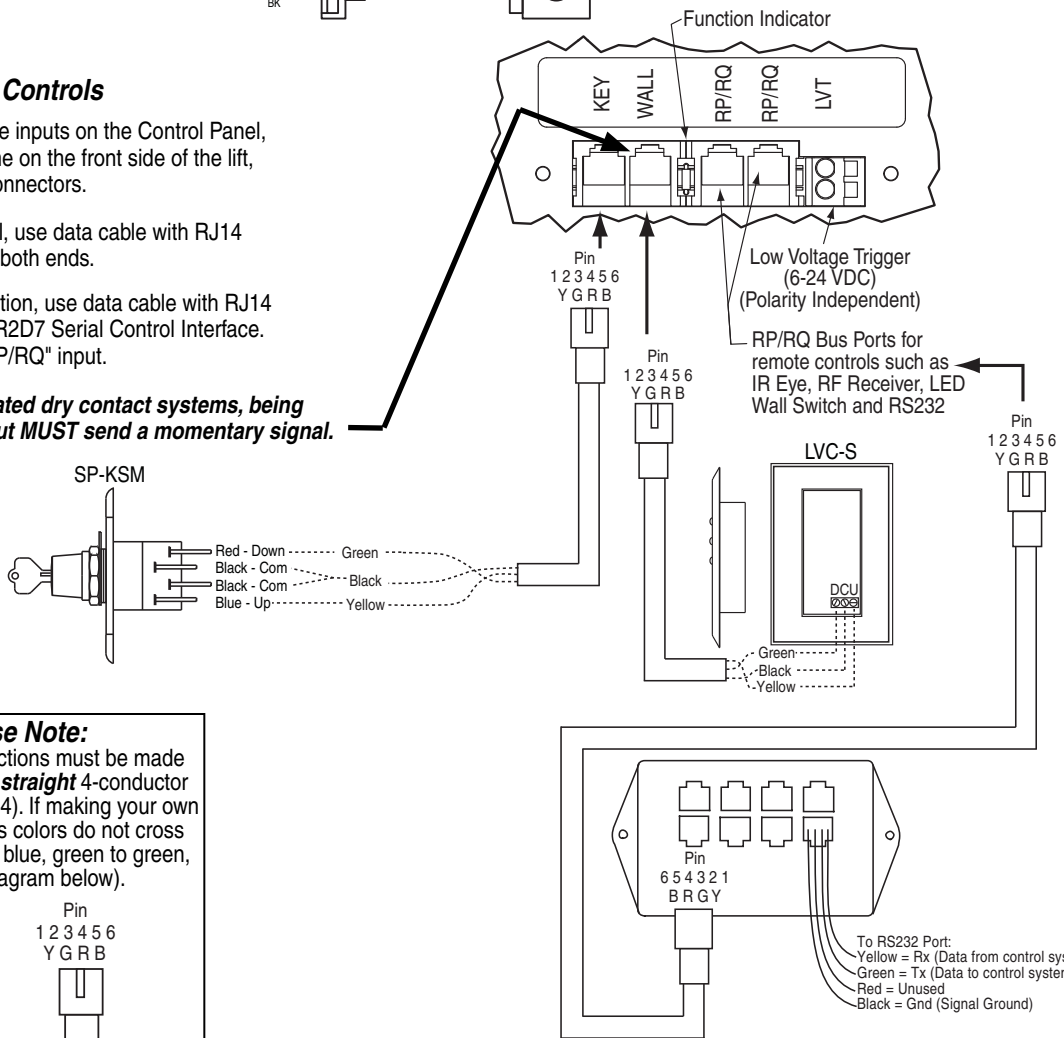
Connecting Controls

Controls plug into the data cable inputs on the Control Panel, which is located on the Top Frame on the front side of the lift, using RJ14 connectors.

For IR or RF Remote Control, use data cable with RJ14 connectors on both ends.

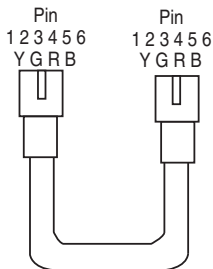
For serial control of "Show" position, use data cable with RJ14 connectors on both ends and an R2D7 Serial Control Interface. Plug into the "RP/RQ" input.

Any control, including automated dry contact systems, being connected to the wall switch input MUST send a momentary signal.



Please Note:

Data cable connections must be made using **electrically straight** 4-conductor modular cable (RJ14). If making your own cables, this means colors do not cross over: blue leads to blue, green to green, etc. (see diagram below).



DRAPER SALESPERSON: _____

CUSTOMER CONTACT: _____

SIGNATURE: _____