



*Motorized
Exterior FlexShades
shown above with black
hardware, Mermet Satine
Charcoal/Charcoal (5%
open) fabric and
side channels*



Exterior FlexShades™

Motorized, Crank-operated and Clutch-operated Outdoor Shades

www.draperinc.com/go/exteriorshades.htm

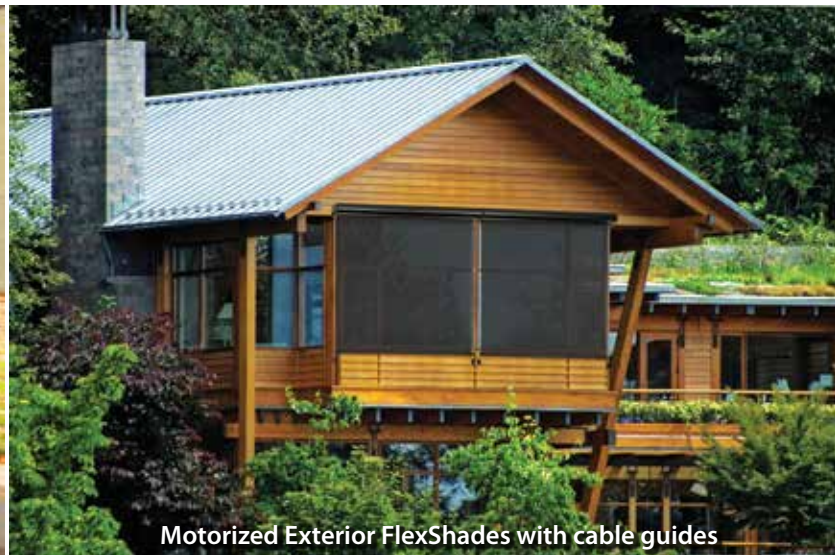


Exterior FlexShades™

Motorized, Crank-operated and Clutch-operated Outdoor Shades



Clutch-operated Exterior FlexShades with cable guides



Motorized Exterior FlexShades with cable guides

Product Features

- Available in simple to install motorized, crank-operated, and clutch-operated versions
- Heavy-duty cable guides or side channels secure fabric against wind and weather*
- Hardware (case and visible brackets) available in silver, ivory, charcoal bronze, white or black
- Weather and insect resistant solid aluminum headbox for motorized and crank-operated includes built-in hinge for easy installation and service
- Available in sizes up to 11' x 11'
- Wide range of fabric colors and openness choices (1% to 14%), see back page
- Design offers superior fit-and-finish and better durability than competitive products
- Greater heat reduction and energy savings than interior window treatments
- Same unsurpassed Draper quality as our other window shade products



**Shades for porch/patio use should be retracted in windy conditions. Some deterioration of the operator and bracket components may occur over time in coastal applications near salt water.*

Motorized

For the ultimate in solar control and convenience choose Draper Motorized Exterior FlexShades. Easily raise or lower shades with the touch of a wall switch or remote. Motorized Exterior FlexShades can be quickly and quietly positioned to block unwanted sunlight and heat with numerous control options or may be integrated seamlessly into existing home automation systems.

Options:

- Available with either side channels or cable guides for secure operation in windy weather
- Same motor options available as our other window shade products



Deck/floor mount cable guide bracket (black)



Black case detail with side channel



White hardware detail with side channel

Engineered for durability in the harshest environments, Exterior FlexShades offer an exceptionally clean and attractive look that is perfect for any style home. With more hardware colors and fabric choices than the competition, Exterior FlexShades are the perfect solar control solution for any window or patio area.



Crank-operated Exterior FlexShades with side channels



Clutch-operated Exterior FlexShades

Crank-operated

Draper Crank-operated Exterior FlexShades offer attractive and durable protection for your windows. Sturdy crank makes adjustments quick and easy, even on larger shades. Crank-operated Exterior FlexShades feature superior styling (hardware same as motorized, shown at left) in a variety of hardware colors to fit any home.

Options:

- Available with either side channels or cable guides for secure operation in windy weather
- Crank handle (white) available in 48", 60" and 72" lengths, 60" length is standard



Crank Handle



Black case detail with cable guide and crank



White hardware detail with cable guide, wall mount bracket



Ivory square fascia/endcap detail with cable guide



Bracket detail with cable guide, ceiling mount

Clutch-operated

Clutch-operated Exterior FlexShades are perfectly suited for patio and pool areas where solar control is needed. Attractive aluminum fascia and headbox styles match other Draper interior shade products. Stainless steel bead chain clutch operation allows for easy adjustments.

Don't surrender your outdoor spaces to harsh sunlight. Take control with Clutch-operated Exterior Flexshades from Draper.

Options:

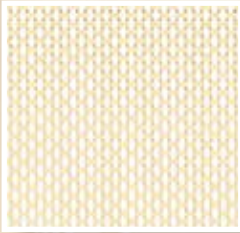
- Available with optional cable guides for secure operation in windy weather
- Chain tension device included for safety, optional spring-loaded chain tension device available as upgrade or replacement

Exterior FlexShades—Fabric Selection

Draper offers one of the largest shade fabric collections in the industry with an array of colors, textures and characteristics sure to enhance the look of your home while meeting your solar control needs. The quality fabrics from Phifer® and Mermet® shown below represent only a small percentage of the many fabrics available for interior and exterior shade use. Complement your fabric choice(s) with one of our attractive hardware finishes (silver, ivory, charcoal, bronze, white or black). Draper has been a trusted name for quality window coverings since 1902. Visit www.draperinc.com/go/exteriorshades.htm for more information.

MERMET—Natte®

12% open, available in the following colors
(White/Mustard shown*):



- White/Stone
- White/Mustard
- White/Pearl-Grey
- Bronze/Pearl
- Bronze/Grey
- Charcoal/Fern
- Bronze/Cocoa-Mandarin
- Bronze/Bronze
- Charcoal/Bronze
- Charcoal/Charcoal

MERMET—Vienne®

10% open, available in the following colors
(Charcoal/Denim shown*):



- White/White
- White/Linen
- Bronze Straw
- Charcoal/Pearl
- Bronze/Mandarin
- Charcoal/Denim
- Charcoal/Pine
- Charcoal/Charcoal

Phifer—SunTex®

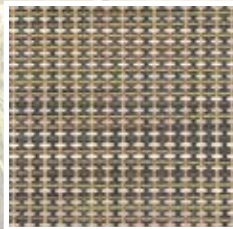
10% open, available in the following colors
(Brown shown*):



- Stucco
- Beige
- Grey
- Brown
- Black

Phifer—SunTex Design®

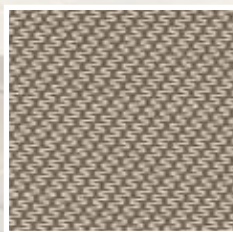
10% open, available in the following colors
(Toast shown*):



- Coconut
- Coral
- Wheat
- Toast
- Toffee

MERMET—Satine®

5% open, available in the following colors
(Bronze/Sable shown*):



- White/Straw
- White/Sable
- Bronze/Sable
- Bronze/Bronze
- Charcoal/Bronze
- Charcoal/Charcoal

*Actual fabric colors may vary from what is shown.



Exterior FlexShades™

Motorized, Crank-operated and Clutch-operated Outdoor Shades