

SecurityGrille Systems



Product Line

SIDE-FOLDING-FULL CLOSURE

SIDE-FOLDING-OPEN AIR

UPWARD COILING

SERIES

675 677 678 679

681 682 683 684 685

670 671 672 673 674



INDUSTRY LEADING
COMMERCIAL & INDUSTRIAL SOLUTIONS

THE TURNKEY SOURCE FOR COMMERCIAL AND INDUSTRIAL SOLUTIONS AND SERVICE

Selection of Overhead Door products automatically includes the unequalled expertise and experience of Overhead Door Ribbon Distributors. Nationwide coverage by our 400+ Ribbon Distributors is unique in our industry – providing a single source for design and application consulting, installation, service and ongoing maintenance. Turnkey services to maximize the lasting value of your product choice. Your Overhead Door Distributor is also your only source for a full line of commercial and industrial door and operator systems specifically



designed for integrated applications. For over four generations, our 400+ Ribbon Distributors have been committed to providing commercial and industrial door solutions. Combined with Overhead Door product design and manufacturing superiority, our distributors are a proud part of the Overhead Door family, sharing our name, our Ribbon logo and our commitment to industry leading innovation and excellence.

SECURITY GRILLE SELECTION CHECKLIST

Determining whether a side-folding or upward-coiling door is best for your project can be a matter of the application, opening conditions, or personal preference. Some basic design considerations are listed below. Your local Overhead Door Distributor is also a good resource for additional insight and information.

A side-folding security grille is often used in applications where:

- Headroom is limited
- There is limited or no clearance above the opening or on one side of the opening
- The grille must follow a radius
- The opening is extremely wide
- Electric operation or electrically-controlled emergency egress is not necessary.

An upward-coiling security grille is ideally used in applications where:

- Electric operation is necessary
- Electrically-controlled emergency egress is desired
- The grille is subjected to heavy usage (an optional high usage package is available).
- In applications with no clearance on one or both sides of the opening

CONTENTS

Intro to Side-Folding Security Grilles	2
Intro to Upward-Coiling Grilles	3
Security Grille Comparison Chart	4-5
Side-Folding-Full Closure Grilles	6-9
Side-Folding-Open Air Grilles	10-13
Side-Folding Details	14-17
Upward-Coiling Grilles	18-23
Upward-Coiling Details	24-27
Electric Operators	28-29



Overhead Door Corporation's **security grilles** provide an array of attractive solutions for a spectrum of retail, commercial and industrial applications. Our side-folding grilles boast the shortest stacking dimension of any grille available today, and feature a handsome clear anodized finish (standard) in a variety of patterns and optional colors. We also offer a complete line of upward-coiling grilles. Constructed of aluminum, stainless or galvanized steel — with optional electric motor — these grilles are designed for durability and easy operation. Backed by the best service company in the industry, a market-leading warranty and 400+ Overhead Door Ribbon distributors nationwide — our comprehensive line of security grilles affords both reliable security and peace of mind.

Installation and Service: Overhead Door Company of Dallas-Commercial



Side-Folding Grilles

Overhead Door Corporation's side-folding grilles offer a reliable means of security with an extraordinary measure of style — and the shortest stacking dimension of any side-folding grille on the market. Manually-operated, these grilles are ideal in areas where headroom is limited or the grille must turn a horizontal radius. Our comprehensive line of grilles include full-closure and open-air designs in a wide range of curtain inserts, patterns and colors — for long-lasting good looks wherever a security grille is required.

The Shortest-Stacking, Lowest-Profile Side-Folding Grille Available

- Panels fold to an average 2" (51 mm) per linear foot of curtain on standard-width models, and an average 1 1/2" (38 mm) per linear foot on wide-body models for superior compactness
- Minimum clear pocket widths of 8" (203 mm) on standard-width models. Minimum clear pocket widths of 13" (330 mm) on wide-body models require less depth.
- Low-profile, top-mounted aluminum track requires only 1 5/8" (41 mm) headroom and 1 3/8" (35 mm) width

Innovative Engineering Enhances Design Capabilities

- Up to 2" (51 mm) of vertical adjustment allows for easy field correction and accommodates irregular or non-level surfaces

- Modular construction allows customization to fit any opening width
- Choice of standard or wide-body panels (selected models) provides alternative stacking pocket depths to suit individual applications
- Full height, countertop, multi-level, and cut-out styles, as well as irregular wall filler panels, allow adaptation to special applications and unusual designs
- Four stock curves (90°, 120°, 135° and 150°) with standard 14" (356 mm) radius for standard body and 22" (559 mm) radius for wide-body panels allow unique design capabilities to close odd-shaped openings or follow lease lines
- Additionally available special curves and radii afford limitless design possibilities

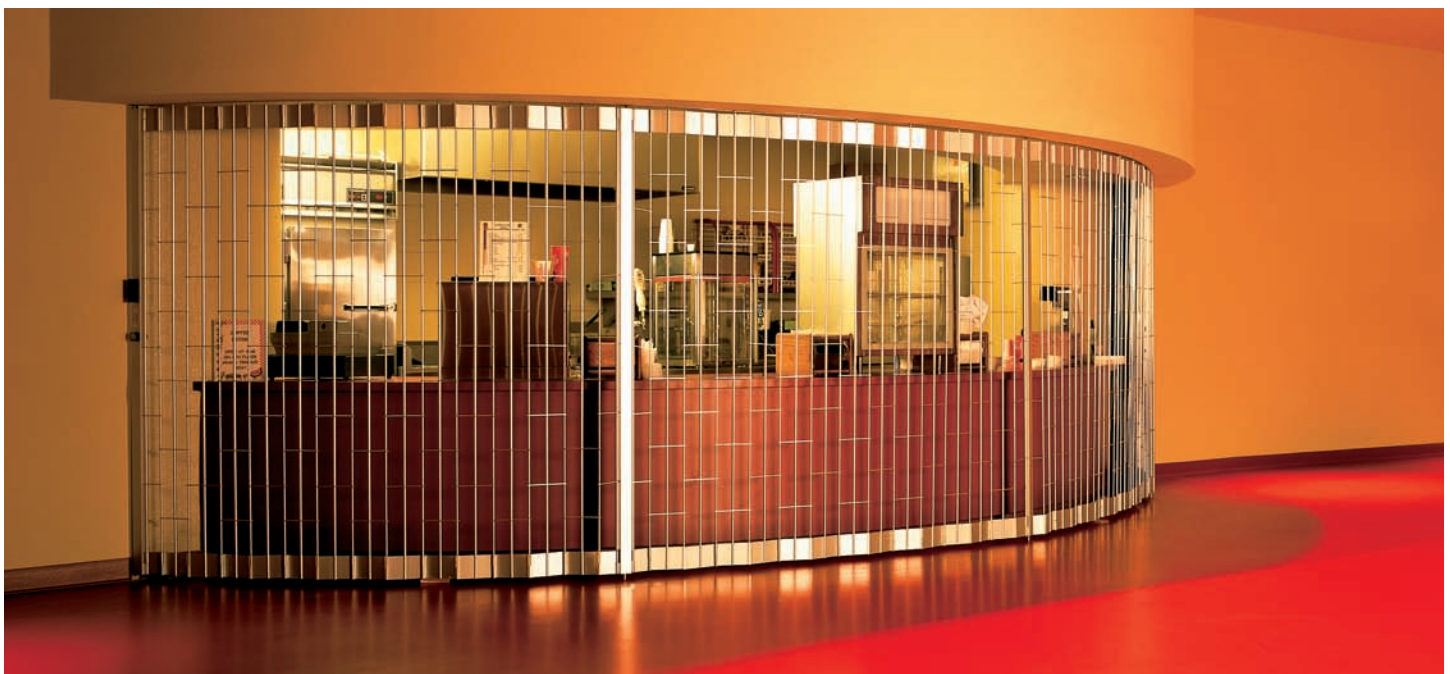
A Wide Range of Options Add Versatility and Style

- Full-closure grilles available in tempered glass, fire-retardant polycarbonate, painted perforated steel, and aluminum curtains for added security and full functionality in any application
- Open-air grilles maximize ventilation and visual access without compromising security
- Wide variety of side-folding grille curtain patterns and finishes, colors and styles afford design flexibility

Standard Anodized Finish and the Spectrum of Color Options

- Standard clear, clean anodized finish on all side-folding grilles lends unsurpassed beauty and durability
- Unlimited custom-color matching is optionally available for most side-folding grilles in anodized, Duracron® acrylic paint, or powder-coat paint finishes

Installation and Service: Overhead Door Company of Madison





Installation and Service: Overhead Door Company of Huntsville




Overhead Door Corporation's upward-coiling grilles provide an attractive yet functional means to secure areas where public access must be restricted. These ruggedly-constructed grilles provide security without sacrificing visual access, air circulation or light infiltration. Available in aluminum, galvanized steel, or stainless steel curtain — and with an optional electric operator — our rolling grilles are well-suited to most any environment and application.


Upward-Coiling Grilles: Many Options, Versatile Applications

- Aluminum, galvanized steel or stainless steel curtain meet a wide range of project and design requirements
- Aluminum curtain with optional fire-retardant polycarbonate panel provides full visual access, and adds protection against theft
- Choice of straight-lattice or staggered brick pattern for added interest
- Optional electric operator allows grille automation for 24-hour parking garages and institutional/industrial applications
- Special high-usage package promotes long-life and low-maintenance in heavy-use applications

Security Grille Comparison Chart

Side-Folding Security Grilles		GENERAL SPECIFICATIONS											
 SERIES		Operation	Curtain insert Glass	Polycarbonate	Aluminum	Perforated steel	Curtain	Frame Width Standard Body	Wide Body	HIEP* sleeves	Track (mount)	Track material	Standard track curves
Full-closure (Pg. 6 - 9)	675	manual				●	alum	6 5/16" (160 mm)	11 3/4 (298 mm)		Top	HD alum	90°, 120° 135°, 150°
	677	manual		●			alum	6 5/16" (160 mm)	11 3/4 (298 mm)		Top	HD alum	90°, 120° 135°, 150°
	678	manual	●				alum	6 5/16" (160 mm)	11 3/4 (298 mm)		Top	HD alum	90°, 120° 135°, 150°
	679	manual			●		alum	6 5/16" (160 mm)	11 3/4 (298 mm)		Top	HD alum	90°, 120° 135°, 150°
Open-air (Pg. 10 - 13)	681	manual					alum	6 5/16" (160 mm)	11 3/4 (298 mm)		Top	HD alum	90°, 120° 135°, 150°
	681 E "Value Engineered"	manual					alum / HIEP*	6 5/16" (160 mm)	11 3/4" (298 mm)	●	Top	HD alum	90°, 120° 135°, 150°
	682 †	manual					alum	6 5/16" (160 mm)			Top	HD alum	90°, 120° 135°, 150° (356 mm)
	682 E "Value Engineered"	manual					alum / HIEP*	6 5/16" (160 mm)		●	Top	HD alum	90°, 120° 135°, 150°
	683	manual					alum	6 5/16" (160 mm)			Top	HD alum	90°, 120° 135°, 150° (356 mm)
	683 E "Value Engineered"	manual					alum / HIEP*	6 5/16" (160 mm)		●	Top	HD alum	90°, 120° 135°, 150°
	684	manual					alum	6 5/16" (160 mm)			Top	HD alum	90°, 120° 135°, 150° (356 mm)
	684 E "Value Engineered"	manual					alum / HIEP*	6 5/16" (160 mm)		●	Top	HD alum	90°, 120° 135°, 150°
685	manual					alum	6 5/16" (160 mm)			Top	HD alum	90°, 120° 135°, 150°	

*HIEP = High Impact Extruded Polymer
 † Series 682 style 99 or style 1212 = 14' (4.3 m)
 Series 682 style 1616 or style 2424 = 20' (6.1 m)

Upward-Coiling Security Grilles		GENERAL SPECIFICATIONS												
 SERIES		Operation Manual push-up to 80 sq ft steel 120 sq ft Aluminum	Chain hoist	Crank	Electric operator	Curtain material	Aluminum	Aluminum/Glass	Galvanized steel	Steel-Perforated	Stainless steel	Aluminum with polycarbonate	Pattern Straight Lattice	Staggered Brick
Full-closure (Pg. 18 - 23)	670	●	●	●	●	●						●	●	●
	671	●	●	●	●				●		●		●	●
	672	●	●	●	●			●					●	
	673	●	●	●	●							●	●	
	674	●	●	●	●					●			●	

Information is subject to change. Please call your local Overhead Door distributor for special applications or if your application is not listed.



				AVAILABLE OPTIONS						
Standard radius	Maximum width	Maximum height	Standard finish	Special track curves	Special radii	Emergency egress doors	Exit paddles	Optional Finishes Color anodized finish	Acrylic Paint	Powder coating paint
14"/22" (356/559 mm)	No Limit	24' (7,315 mm)	Clear anod.	●	●	●	●	●	●	●
14"/22" (356/559 mm)	No Limit	24' (7,315 mm)	Clear anod.	●	●	●	●	●	●	●
14"/22" (356/559 mm)	No Limit	24' (7,315 mm)	Clear anod.	●	●	●	●	●	●	●
14"/22" (356/559 mm)	No Limit	24' (7,315 mm)	Clear anod.	●	●	●	●	●	●	●
22" (56 mm)	No Limit	24' (7,315 mm)	Clear anod.	●	●	●	●	●	●	
22" (559 mm)	No Limit	24' (7,315 mm)	Clear anod.	●	●	●	●			
14" (356 mm)	No Limit	*	Clear anod.	●	●	●	●	●	●	●
14" (356 mm)	No Limit	*	Clear anod.	●	●	●	●			
14" (356 mm)	No Limit	12' (3658 mm)	Clear anod.	●	●	●	●	●	●	
14" (356 mm)	No Limit	12' (3658 mm)	Clear anod.	●	●	●	●			
14" (356 mm)	No Limit	10' (3048 mm)	Clear anod.	●	●	●	●	●	●	●
14" (356 mm)	No Limit	10' (3048 mm)	Clear anod.	●	●	●	●			
14" (356 mm)	No Limit	Consult Factory	Clear anod.	●	●	●	●	●	●	●

					AVAILABLE OPTIONS								
Cylinder Lock	Finishes Galvanized steel	Mill finish aluminum	Clear anodized	Stainless steel 2B	Galvanized steel hood	Aluminum hood	Non-electric emergency egress	Locking mechanisms Thumb turn guards	Optional finishes Clear anodized	Bronze anodized	Stainless steel No. 4	Powder coating	Acrylic paint
●		●			●	●	●	●	●	●			
●	●			●	●	●	●				●	●	
●			●		●	●	●			●		●	●
●			●		●	●	●			●		●	●
●			●		●	●	●			●		●	●

Side-Folding Full Closure Grilles

SERIES 675 677 678 679

Standard Features At a Glance

Curtain frame	Truss-like aluminum top and bottom plates
Frame thickness	1/8" (3 mm)
Panel width	6 5/16" (160 mm) standard body 11 1/4" (298 mm) wide body
Trolley assembly	1 1/8" (29 mm)
Vertical adjustment	1" (25 mm) up/down without curtain removal
Track	Top-mounted, heavy-duty aluminum sections
Track height	1 5/8" (41 mm)
Track width	1 3/8" (35 mm)
Standard track curves	90°, 120°, 135°, 150°
Std. radius	14" (356 mm) standard body 22" (559 mm) wide body
Post types	
Lead post	Hook lock and wall channel; bi-part; top bottom shoot bolts
Intermediate post	Bottom shoot bolt
Trailing end post	Traveling; fixed; hook lock and wall jamb; top and bottom shoot bolts; carrier
Locking mechanisms	
Lead post	Concealed cylinder-operated hook lock accessible from interior and exterior
Intermediate post	Concealed cylinder-operated shoot bolt accessible from one side only
Trailing end post	Attached 10' max. (3048 mm) protection plate self-locking into a steel V-Stop
Standard finish	Clear anodized finish

Note: All Post types can be used in most any position as need dictates

Options

- Custom radii and curves
- Emergency egress door
- Thumb-turn guards
- Color-matched, anodized finish
- Color-matched, Duracron (acrylic) finish
- Powder-coat paint finish in 197 standard colors, or color-matched to your specification

The 675/677/678/679 Series side-folding closures are ideal for applications that require a secure barrier against theft and debris, such as retail applications in malls, airports and concourses. The series includes four panel materials: painted perforated steel for full ventilation; clear polycarbonate for visual access and nonbreakable durability; tempered glass for a crystal-clear view; and full-height aluminum for maximum security. All four models are available in both standard-body and wide-body versions.



675 Series

Curtain: 6 5/16" (160 mm) standard-width, 18-gauge painted perforated steel panels with 3/16" (5 mm) dia. holes on staggered centers that slide into aluminum hinges. Panels are framed by min. 4" (102 mm) high aluminum bottom plates and 5 1/4" (133 mm) high aluminum top plates.

Visibility: 51% of 4 3/4" (121 mm) viewable area



675 Series (Wide Body)

Curtain: 11 1/4" (286 mm) wide-body panels, constructed of 18-gauge painted perforated steel with 3/16" (5 mm) dia. holes on staggered centers that slide into aluminum hinges. Panels are framed by min. 4" (102 mm) high aluminum bottom plates and 5 1/4" (133 mm) high aluminum top plates.

Visibility: 51% of 8 7/8" (225 mm) viewable area



677 Series

Curtain: 6 5/16" (160 mm) standard-width panels with 1/8" (3 mm) thick fire-retardant polycarbonate that fit into aluminum hinges. Panels are framed by min. 4" (102 mm) high aluminum bottom plates and 5 1/4" (133 mm) high aluminum top plates.

Visibility: 100% of 4 3/4" (121 mm) viewable area*



678 Series (Wide Body)

Curtain: 11 1/4" (286 mm) wide-body panels, with 1/8" (3 mm) thick tempered glass that fit into aluminum hinges and are framed by min. 4" (102 mm) high aluminum bottom plates and 5 1/4" (133 mm) high aluminum top plates.

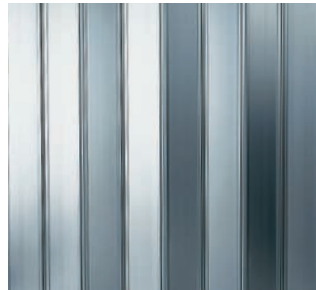
Visibility: 100% of 8 7/8" (225 mm) viewable area*



677 Series (Wide Body)

Curtain: 11 1/4" (286 mm) wide-body panels with 1/8" (3 mm) thick fire-retardant polycarbonate that fit into aluminum hinges. Panels are framed by min. 4" (102 mm) high aluminum bottom plates and 5 1/4" (133 mm) high aluminum top plates.

Visibility: 100% of 8 7/8" (225 mm) viewable area*



679 Series

Curtain: 6 5/16" (160 mm) standard-width panels constructed of full-height, solid aluminum that slide into aluminum hinges. Panels are framed by alternately positioned 5 1/4" (133 mm) high aluminum top plates.

Visibility: 0%



678 Series

Curtain: 6 5/16" (160 mm) standard-width panels with 1/8" (3 mm) thick tempered glass that fit into aluminum hinges. Panels are framed by min. 4" (102 mm) high aluminum bottom plates and 5 1/4" (133 mm) high aluminum top plates.

Visibility: 100% of 4 3/4" (121 mm) viewable area*



679 Series (Wide Body)

Curtain: 11 1/4" (286 mm) wide-body panels constructed of full-height, solid aluminum that slide into aluminum hinges. Panels are framed by alternately positioned 5 1/4" (133 mm) high aluminum top plates.

Visibility: 0%

* 1" Plate separator panels on full height closures over 6' in height

Side-Folding Full Closure Grilles

SERIES 675 677 678 679

ARCHITECTURAL SPECIFICATIONS* 675 677 678 679

PART 1 GENERAL

1.01 Work Included

The closures will be Series 675, 677, 678 or 679 as furnished by Overhead Door Corporation.

1.02 Related Work

Opening preparation, miscellaneous or structural metal work, access panels, and finish or field painting are in the Scope of Work of other divisions or trades.

PART 2 PRODUCT

2.01 Curtain – Pick from 2.01.A-D below.

2.01.A Series 675 - 675 Wide Body

Curtain design shall incorporate minimum 4" (102 mm) high bottom plates of truss like aluminum and 5 1/4" (133 mm) high top plates that frame each 6 5/16" (160 mm) or 11 1/4" (286 mm) wide panel. The curtain contains 18 gauge, 3/16" (5 mm) painted perforated steel panels allowing for 51% visibility. Panels can be finished to match color selection.

2.01.B Series 677 - 677 Wide Body

Curtain design shall incorporate minimum 4" (102 mm) high bottom plates of truss like aluminum and 5 1/4" (133 mm) high top plates that frame each 6 5/16" (160 mm) or 11 1/4" (286 mm) wide panel. The curtain is glazed with 1/8" (3 mm) thick polycarbonate with a viewable area width of 4 3/4" (121 mm) or 8 7/8" (225 mm). These polycarbonate panels are cushioned with specially designed vinyl compression gaskets at top and bottom of glazing.**

2.01.C Series 678 - 678 Wide Body

Curtain design shall incorporate minimum 4" (102 mm) high bottom plates of truss like aluminum and 5 1/4" (133 mm) high top plates that frame each 6 5/16" (160 mm) or 11 1/4" (286 mm) wide panel. The curtain is glazed with 1/8" (3 mm) thick tempered glass with a viewable area width of 4 3/4" (121 mm) or 8 7/8" (225 mm). These glass panels are cushioned with specially designed vinyl compression gaskets at top and bottom of glazing.**

2.01.D Series 679 - 679 Wide Body

Curtain design shall incorporate truss like aluminum and 5 1/4" (133 mm) high plates, alternating on top of 6 5/16" (160 mm) or 11 1/4" (286 mm) wide, solid full-height aluminum panels.

2.02 Track

1 1/8" (29 mm) trolley assemblies are adjustable 1" (25 mm) upward or downward without removal of curtain. Track shall be heavy extruded aluminum 1 3/8" (35 mm) wide by 15/8"

(41 mm) high. ***Curves are 90°, 120°, 135° and 150° degrees and shall have a 14" (356 mm) radius for standard body models and 22" (559 mm) radius for wide body models.

2.03 Finish

All aluminum shall be furnished in a clear anodized finish. (Optional acrylic, powder coat paint, or colored anodized finish. Consult distributor for special colors.)

2.04 Stacking Dimensions

Standard 6 5/16" (160 mm) Panel

All models specify 1 3/16" (21 mm) per linear foot of curtain. Add 3" (76 mm) to stack per post. Clear pocket width 8" (203 mm). Note: See 2.05.B for location of posts.

Wide Body 11 1/4" (286 mm) Panel

All models specify 3/4" (19 mm) per linear foot of curtain. Add 3" (76 mm) to stack per post. Clear pocket width 13" (330 mm). Note: See 2.05.B for location of posts.

Emergency Egress Door (Optional). All models add 8" (203 mm) to stack for emergency egress door.

2.05 Locking – See 2.05.A-C below.

2.05.A Lead Posts

Lead post conceals a hook bolt lock activated by a keyed cylinder or thumb turn, engaging a full height wall channel. Where required, an optional top and bottom spring loaded locking post with interior thumb turn or keyed cylinder and dustproof floor socket are available. The edge of this post shall have a rubber bumper.

2.05.B Intermediate Posts

Intermediate posts shall be provided for every 10' (3,048 m) maximum (counter mounts, 6' (1,828 m) maximum) of curtain length and at each curve. Intermediate posts shall contain an adjustable concealed spring loaded drop bolt with cylinder keyed alike. Dustproof floor sockets are furnished for all drop bolts.

2.05.C Trailing End Posts

Trailing end post shall have an attached 10' max, high-impact extruded polymer protection plate and be self locking into a floor steel V-stop and top stop. End post can be fixed to a wall when stacked in opening. Optional top and bottom locking end posts are available.

PART 3 EXECUTION

3.01 Execution

Install the doors in accordance with Overhead Door Corporation instructions and standards, using an authorized Overhead Door Corporation distributor or representative.

* Note to specifiers: Words in parentheses indicate frequently specified and highly recommended options.

** Full height closures will require 1" separator panels

*** Consult distributor for special curves.



Installation and Service: Overhead Door Company of Dallas-Commercial



Side-Folding Open Air Grilles

SERIES 681 682 683 684 685

Standard Features At a Glance

Curtain frame	Truss-like aluminum top and bottom plates
Frame thickness	1/8" (3 mm)
Panel width	6 5/16" (160 mm) standard body 11 3/4" (299 mm) wide body
Trolley assembly	1 1/8" (29 mm)
Vertical adjustment	1" (25 mm) up/down without curtain removal
Track	Top-mounted, heavy-duty aluminum sections
Track height	1 5/8" (41 mm)
Track width	1 3/8" (35 mm)
Standard track curves	90°, 120°, 135°, 150°
Std. radius	14" (356 mm) standard body 22" (559 mm) wide body
Post types	
Lead post	Hook lock and wall channel; bi-part; top and bottom shoot bolts
Intermediate post	Bottom shoot bolt
Trailing end post	Traveling; fixed; hook lock and wall jamb; top and bottom shoot bolts; carrier
Locking mechanisms	
Lead post	Concealed cylinder-operated hook lock accessible from interior and exterior
Intermediate post	Concealed cylinder-operated shoot bolt accessible from one side only
Trailing end post	Attached 10' max height protection plate self-locking into a steel V-Stop
Standard finish	Clear anodized finish

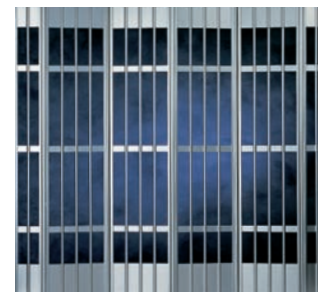
Note: All Post types can be used in most any position as need dictates

Options

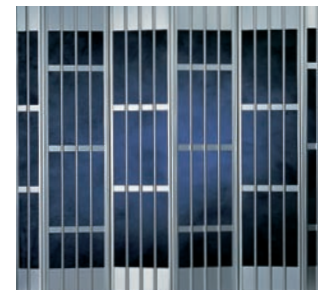
- Custom track radii and curves
- High-impact extruded polymer (HIEP) curtain (681-E, 682-E, 683-E and 684-E only)
- Emergency egress door (except 685 Series/Windowgard™)
- Thumb-turn guards and protection bars
- Color-matched, anodized finish*
- Color-matched, Duracron (acrylic) finish
- Powder-coat paint finish in 197 standard colors, or color-matched to your specification ("E" series not available in special colors.)

*681/683 anodized finish only

Open-air side-folding grilles provide security, while allowing air circulation and full visual access to interior spaces. The 681/682/683/684 Series offer a wide range of features to fit most any application where an open-air grille satisfies security requirements, such as in retail environments, malls, schools, offices and airports. The product line is distinguished by a variety of curtain patterns, colors and finishes. Several models are available with wide-body panels, and the 681-E and 683-E Series are available with an economical high impact extruder polymer (HIEP) curtain. A countertop version is also available.



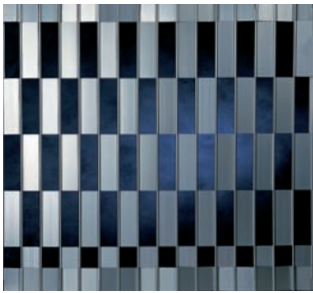
Straight Pattern



Brick Pattern

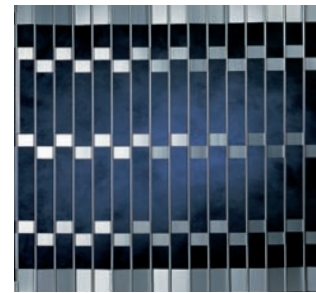
681/681-E Series 681/681-E (Wide Body)

Curtain: 11 1/4" (286 mm) wide-body panels. Panels are constructed of 1" (25 mm) aluminum plates spaced at 12" (305 mm) horizontal intervals with three vertical steel rods space at 1 7/8" (48 mm) intervals covered in aluminum (681 Series) or HIEP sleeves (681-E Series). Panels are framed by min. 2" (51 mm) high aluminum bottom plates and 5 1/4" (133 mm) high aluminum top plates.



682 Series/682E Series

Curtain: 6 5/16" (160 mm) standard-width panels, framed by min. 4" (102 mm) high aluminum bottom plates and 5 1/4" (133 mm) high aluminum top plates. Panels are constructed of alternating aluminum plates according to the model specified:
 AG-99 9" (229 mm) panel alternating with 9" (229 mm) spacing
 AG-1212 12" (305 mm) panel alternating with 12" (305 mm) spacing
 AG-1818 18" (457 mm) panel alternating with 18" (457 mm) spacing
 AG-2424 24" (610 mm) panel alternating with 24" (610 mm) spacing



S-52/E-52



S-12/E-12

684/684-E Series

Curtain: 6 5/16" (160 mm) standard-width panels, framed by min. 4" (102 mm) high aluminum bottom plates and 5 1/4" (133 mm) high aluminum top plates. Panels are constructed of 3" (76 mm) by 2" (51 mm) pieces of aluminum, separated by either aluminum or HIEP tubes spaced at intervals according to the model specified: S-52 5" (127 mm) high aluminum tubes
 E-52 5" (127 mm) high HIEP tubes
 S-12 10" (254 mm) high aluminum tubes
 E-12 10" (254 mm) high HIEP tubes



Straight Pattern



Brick Pattern



685 Series Windowgard™

Windowgard can be furnished in any grille pattern desired. 683 Series S-52 is shown.

683/683-E Series

Curtain: 6 5/16" (160 mm) standard-width panels, framed by min. 4" (102 mm) high aluminum bottom plates and 5 1/4" (133 mm) high aluminum top plates. Panels are constructed of 1/8" (3 mm) by 6" (152 mm) horizontal aluminum links that slide onto 5/16" (8 mm) vertical rods. Rods are held in place by 1/2" (13 mm) aluminum (683 Series) or HIEP spacer tubes (683-E Series) on alternate rods.

Side-Folding Open Air Grilles

SERIES 681 682 683 684 685

ARCHITECTURAL SPECIFICATIONS* 681 682 683 684 685

PART 1 GENERAL

1.01 Work Included

The doors will be Series 681/681-E, 682, 683/683-E, 684/684-E or 685 as furnished by Overhead Door Corporation.

1.02 Related Work

Opening preparation, miscellaneous or structural metal work, access panels, and finish or field painting are in the Scope of Work of other divisions or trades.

PART 2 PRODUCT

2.01 Curtain—Pick from 2.01.A-E below.

2.01.A Series 681/681-E – 681/681-E Wide Body

Curtain design shall incorporate wide body 2" (51 mm) high bottom plates of truss-like aluminum and 5 1/4" (133 mm) high top plates that frame each 11 1/4" (286 mm) wide panel. Each curtain panel shall be constructed of 1" (25 mm) aluminum plates spaced at 12" (305 mm) horizontal intervals incorporating three vertical rods spaced 1 7/8" (48 mm) and covered with aluminum tubes. (E models substitute high-impact extruded plastic – HIEP). The aluminum plates fit into one piece vertical aluminum tubular hinges.

2.01.B Series 682 /682-E

Curtain design shall incorporate minimum 4" (102 mm) high bottom plates of truss like aluminum and 5 1/4" (133 mm) high top plates that frame each 6 5/16" (160 mm) wide panel. Each curtain panel shall be constructed of alternating pieces of aluminum (E models substitute high-impact extruded plastic – HIEP) according to the following options, (9" (229 mm) panel/9" (229 mm) space) (12" (305 mm) panel/12" (305 mm) space) (18" (457 mm) panel/18" (457 mm) space) (24" (610 mm) panel/24" (610 mm) space). All panels are assembled onto steel rods.

2.01.C Series 683/683-E

Curtain design shall incorporate minimum 4" (102 mm) high bottom plates of truss like clear anodized aluminum and 5 1/4" (133 mm) high top plates that frame each 6 5/16" (160 mm) wide panel. Each curtain panel shall be constructed of 1/8" (3 mm) by 5/8" (16 mm) by 6" (152 mm) horizontal clear anodized aluminum links that slide onto 5/16" (8 mm) vertical rods. Links shall be held in place by 1/2" (13 mm) clear anodized aluminum spacer tubes (E models substitute high-impact extruded plastic – HIEP) on alternate rods. (Only anodized finishes available.)

2.01.D Series 684 /684-E

Curtain design shall incorporate minimum 4" (102 mm) high bottom plates of truss-like aluminum and 5 1/4" (133 mm) high top plates that frame each 6 5/16" (160 mm) wide panel. Each curtain panel shall be constructed of aluminum tubes and spacer plates (E models substitute high-impact extruded plastic – HIEP) of 5" (127 mm) (specify 52 pattern) and 10" (specify 12 pattern) (254 mm), spacing 3" (76 mm) wide by 2" (51 mm) high plates. All panels are assembled onto steel rods.

2.01.E Series 685 – Windowgard™

Specify Windowgard construct in any model, grille or closure.

2.02 Track

Trolley assemblies, 1 1/8" (29 mm), are adjustable 1" (25 mm) upward or downward without removal of curtain. Track shall be heavy extruded aluminum 1 3/8" (35 mm) wide by 1 5/8" high (41 mm). **Curves are 90°, 120°, 135°, and 150° and shall have a 14" (356 mm) radius for standard models and 22" (559 mm) radius for wide body models.

** Consult distributor for special curves.

2.03 Finish

All aluminum shall be furnished in a clear anodized finish. (Optional acrylic, powder coat paint, or colored anodized finish. Consult distributor for special colors.)

2.04 Stacking Dimensions (Consult distributor for exact dimensions)

Standard 6 5/16" (160 mm) Panel

All models specify 1 3/16" (30 mm) per linear foot of curtain.

Add 3" (76 mm) to stack per post. Note: See 2.05.B for location of posts. Clear pocket minimum width 8" (203 mm).

Wide Body 11 1/4" (286 mm) Panel

All models specify 3/4" (19 mm) per linear foot of curtain.

Add 3" (76 mm) to stack per post. Note: See 2.05.B for location of posts. Clear pocket minimum width 13" (330 mm).

Emergency Egress Door (Optional)

All models add 8" (203 mm) to stack for emergency egress door.

2.05 Locking—See 2.05.A-C below.

2.05.A Lead Posts

Lead post conceals a hook bolt lock activated by a keyed cylinder or thumb turn, engaging a full height wall channel. Where required, an optional top and bottom spring loaded locking post with interior thumb turn or keyed cylinder and dustproof floor socket are available. The edge of this post shall have a rubber bumper.

2.05.B Intermediate Posts

Intermediate posts shall be provided for every 10' (3048 mm) maximum (countertop applications are 6' (1829 mm) maximum) of curtain length and at each curve. Intermediate posts shall contain an adjustable concealed spring-loaded drop bolt with cylinders keyed alike. Dustproof floor sockets are furnished for all drop bolts.

2.05.C Trailing End Posts

Trailing end post shall have an attached high-impact extruded polymer (HIEP) protection plate and shall be self locking into a steel floor V-stop and top stop. End post can be fixed to a wall when stacked in opening. Optional top and bottom locking end posts are available.

PART 3 EXECUTION

3.01 Execution

Install the doors in accordance with Overhead Door Corporation instructions and standards, using an authorized Overhead Door Corporation distributor or representative.

**Note to specifiers: Words in parentheses indicate frequently specified and highly recommended options.*

Installation and Service: Overhead Door Company of Madison.



Side-Folding Grilles Elevations

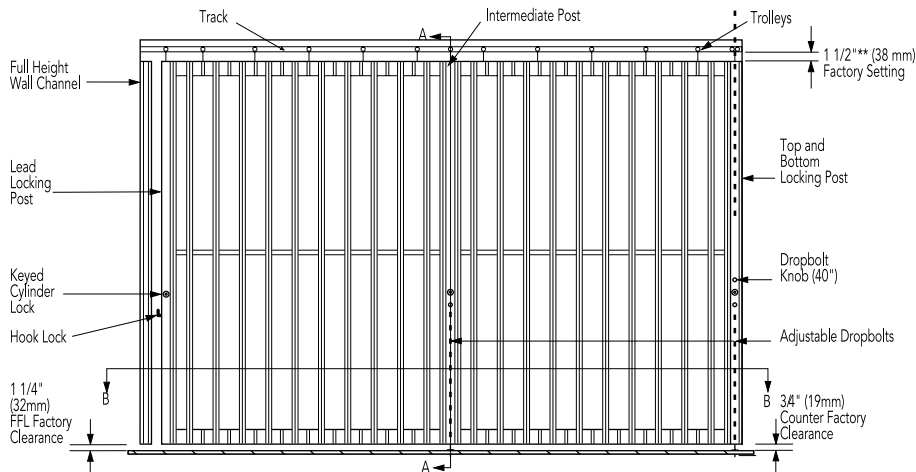
SERIES 681 682 683 684 685

Door Clearance Elevations

Note:

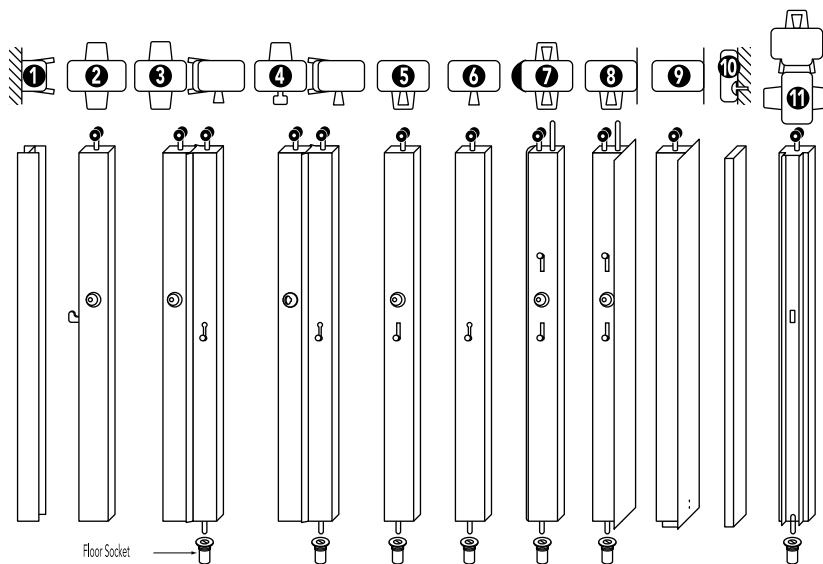
* Curtain height is adjustable to a maximum of 1" (25 mm) upward, and 1" (25 mm) downward to compensate for unexpected field conditions.

** This will vary top clearance from curtain to track from 1/2" (13 mm) to 2 1/2" (63 mm)



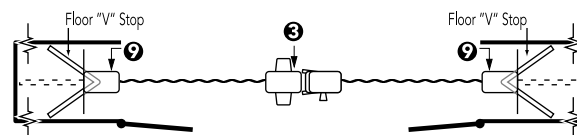
Side Folding Grilles Post Descriptions

- 1 Wall Channel
- 2 Lead Post – with cylinders interior/ exterior engaging hook bolt lock
- 3 Bi-Part – with cylinders interior/ exterior and interior drop bolt
- 4 Bi-Part – with cylinder exterior and interior thumb turn and drop bolt
- 5 Intermediate Post – with interior cylinder lock and drop bolt
- 6 Intermediate Post – with interior drop bolt
- 7 Top and Bottom Post – with interior/ exterior cylinder lock and rubber bumper
- 8 Top and Bottom Post – with cylinder lock and protection plate
- 9 Traveling End Post – with protection plate, post self locks into floor “V” stop
- 10 Fixed End Post
- 11 90° Bi-Part – With interior/ exterior cylinders and exterior drop bolt



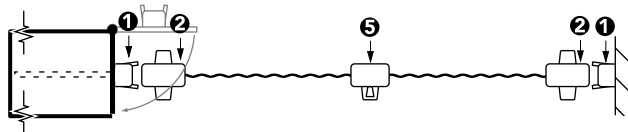
Bi-Part, Pocket Both Sides

Commonly used to break up large curtains or to provide a balanced look.



Single Stack Into Pocket With Wall Channel or Pocket Door

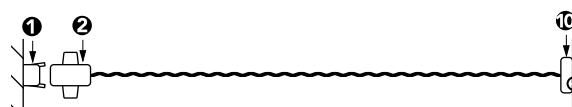
In this configuration, the traveling end post becomes a secured, keyed locking post and avoids drilling for floor socket needed by #7 post.



Stack Between Jambs

For use where there is no pocket availability.

Note: Use of #7 posts for the lead or end are a viable alternative



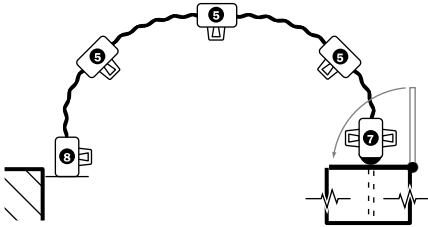
For more detailed information, refer to the Overhead Door Corporation's Architectural Design Manual, or consult your local Overhead Door Distributor.



Side-Folding Grilles Typical Layouts

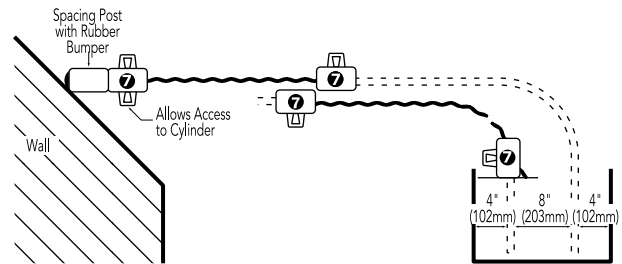
Special Radius Curve

Enables the curtain to follow any lease line and adds a dramatic look to the entrance.



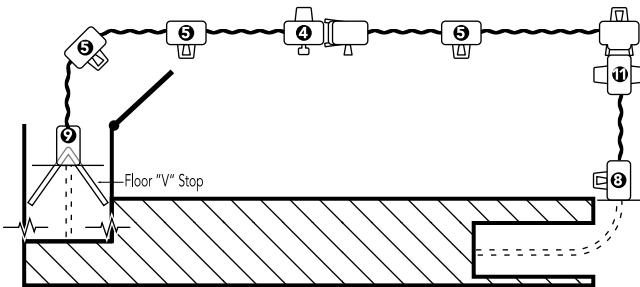
Dual Track

For use when minimal pocket depth is available. A top and bottom lead post with attached spacing post to an angled wall allows access to locking on the acute angle side.



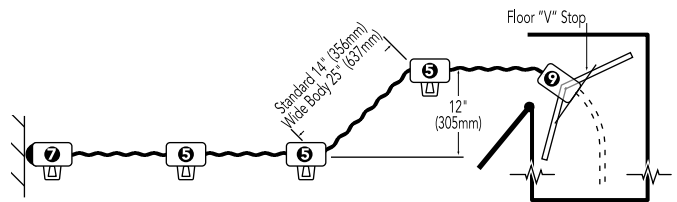
90° Curve With Bi-Part Single Stack Into Pocket

Bi-parting curtains are recommended for curtains 30' or more for ease of use.



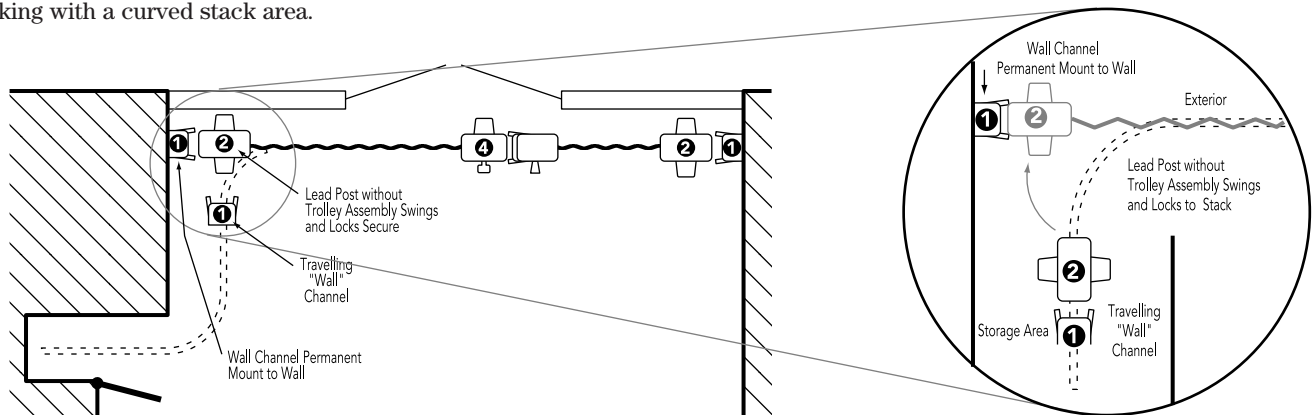
"S" Curve (2 135° curves) With Single Stack Into 90° Pocket

S-curves enable the curtain to avoid obstructions and provide added visual interest.



Remote Stack With Caddy

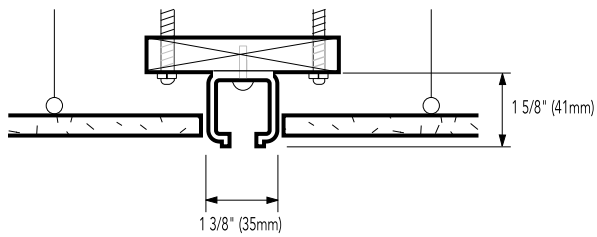
Remote stacks move the curtain away from a secured area to a convenient stack area. Caddy systems allow wall-to-wall locking with a curved stack area.



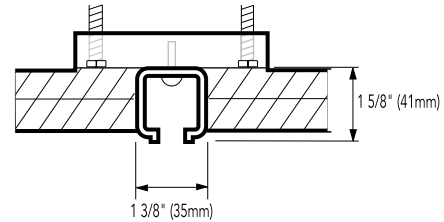
Note: On all layout drawings, top is exterior, bottom is interior of opening.
Pocket construction by others.

Side-Folding Grilles Track Details

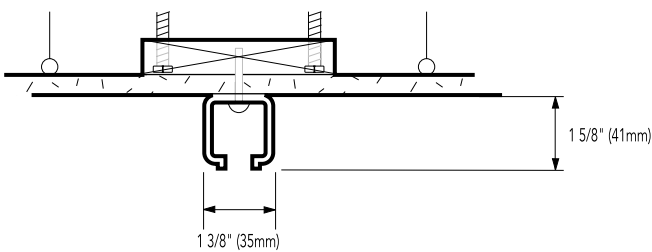
Drop Ceiling Recessed Track



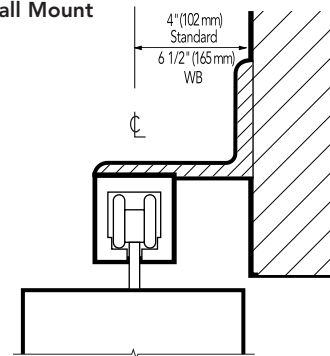
Drywall Ceiling Recessed Track



Drop Ceiling Surface Track

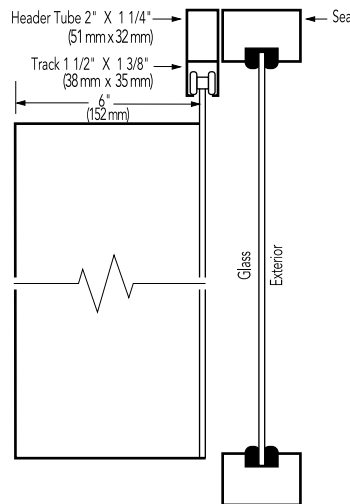


Face-of-Wall Mount

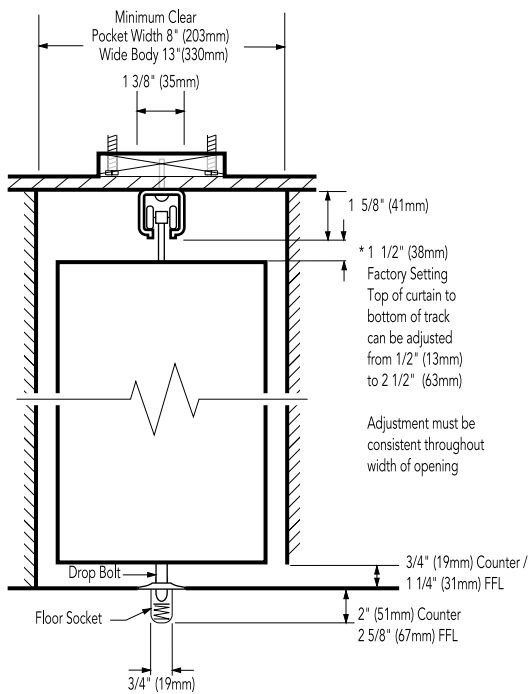
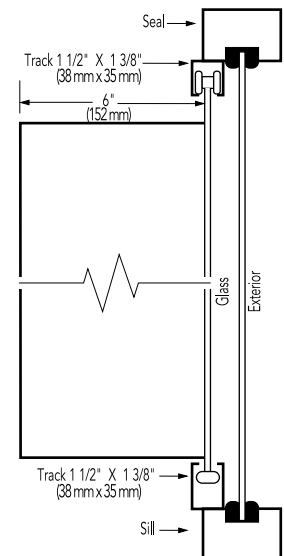


685 Series Windowgard

Top Track with Header Tube



Top and Bottom Track*



Note:

Load requirements are 3 lbs. per square foot (1.66 Kg per square meter) and 200 lbs. per linear foot (91 Kg per linear meter) stacked. Threaded rod 1/2" (13 mm) with 2" (51 mm) x 6" (152 mm) wood stud shown.

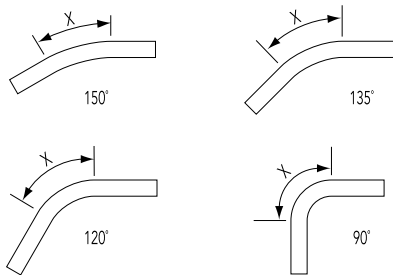
Other acceptable mounts include 2" (51 mm) x 4" (102 mm) steel or wood stud. A column is not required for support.

Header and supporting structure by others.

*Curtain height is adjustable up to 1" (25 mm) up or down without removal.



Curve Details



Note: Special radius curves are available only with a template supplied.
Curves cannot be smaller than 90°
Double 3/4" (19 mm) plywood eliminates problem blocking of curved layouts.

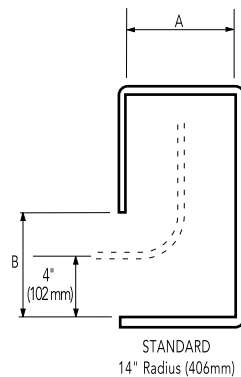
Dimension X

Radius	Curve	X
14" (356 mm)	90°	22" (559mm)
	120°	14 5/8" (372 mm)
	135°	11" (279 mm)
	150°	7 3/8" (187 mm)
22" (559 mm)	90°	34 1/2" (876 mm)
	120°	23" (584 mm)
	135°	17 1/4" (438 mm)
	150°	11 1/2" (292 mm)

Right Angle Pocket Specifications

Standard

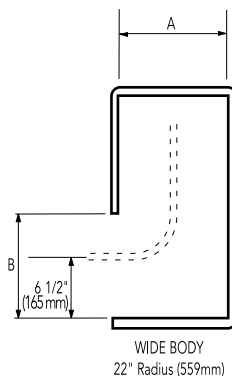
1 3/16" (30 mm) per linear foot plus 3" (76 mm) for each posts.
Min. clear pocket width 8" (203 mm)



Dimensions A and B		Standard	
"A" Pocket Width		"B" Pocket Door Width	
8"	(203 mm)	18"	(457 mm)
9"	(229 mm)	13 5/8"	(346 mm)
10"	(254 mm)	12"	(305 mm)
11"	(279 mm)	10 7/8"	(276 mm)
12"	(305 mm)	10"	(254 mm)
13"	(330 mm)	9 5/16"	(237 mm)
14"	(356 mm)	8 13/16"	(224 mm)
15"	(381 mm)	8 7/16"	(214 mm)
16"	(406 mm)	8 3/16"	(208 mm)

Wide Body

3/4" (19 mm) per linear foot plus 3" (76 mm) for each posts.
Min. clear pocket width 13" (330 mm)



Dimensions A and B		Wide Body	
"A" Pocket Width		"B" Pocket Door Width	
13"	(330 mm)	26"	(660 mm)
14"	(356 mm)	20"	(508 mm)
16 1/2"	(419 mm)	17"	(432 mm)
20"	(508 mm)	14"	(356 mm)
26"	(660 mm)	13"	(330 mm)

Add 3" (76 mm) per stack per locking post. Add 8" (203 mm) to stack per Emergency Egress Door. Add 6" (152 mm) each for bi-part.
Note: The maximum space between locking posts is 10' (3,048 mm) for full height doors, 6' (1,829 mm) on standard counter height and at center of every curve.
For more detailed information, refer to the Overhead Door Corporation's Architectural Design Manual, or consult your local Overhead Door Distributor.

Upward – Coiling Grilles

SERIES 670 671

Standard Features At a Glance

Operation	Manual
Curtain material	Standard: Aluminum (670 Series) Steel (671 Series) Optional: fire-retardant polycarbonate panels (670 Series)
Curtain pattern	Standard: Straight lattice: 5/16" (8 mm) rods at 2" (51 mm) o.c. and links at 9" (229 mm) o.c. Optional: Staggered brick: 5/16" (8 mm) rods at 2" (51 mm), o.c., and links at 4 1/2" (114 mm) o.c. Optional: Curtain with polycarbonate 5/16 (8 mm) rods at 3" (76 mm) o.c. and links at 12" (305 mm) o.c.
Guide type	Aluminum extruded track member
Mounting	Face mount with wall angle or mounting between the jambs on 3" (76 mm) x 3" (76 mm) or 4" (102 mm) x 4" (102 mm) structural steel tubes
Finish	Standard: Mill Finish on aluminum; 2b on stainless; galvanized on steel
Lock	Cylinder

Options

- Electric operator, chain hoist, removable awning crank or crank box
- Aluminum curtain with polycarbonate filler panels
- Staggered brick pattern
- 24-gauge galvanized steel hood
- Heavy-usage package
- Anodized finishes (aluminum);
No. 4 finish (stainless)
- Clear, bronze
- Emergency egress doors
- Controls
 - Time Clock
 - Card Reader
 - Keypad Access
- Powder Coat

The 670 and 671 Series offer outstanding security and visibility in an overhead rolling-style grille, allowing visual access, free air circulation and light infiltration. These versatile grilles have myriad applications – from securing store fronts and restricted areas in malls, airport concourses, schools and convention centers to industrial applications in commercial settings, institutional buildings, and parking garages.

ARCHITECTURAL SPECIFICATIONS*

670 671

PART 1 GENERAL

1.01 Work Included

The rolling grilles will be Series 670 or 671 as manufactured by Overhead Door Corporation.

1.02 Related Work

Opening preparation, miscellaneous or structural metal work, access panels, finish or field painting, field electrical wiring, wire, conduit, fuses and disconnect switches are in the Scope of Work of other divisions or trades.

1.03 Quality Assurance

In accordance with accepted quality assurance guidelines for motor-operated doors, both the upward coiling grille and electric operator (optional) shall be manufactured by a single-source producer of door systems; as by Overhead Door Corporation.

PART 2 PRODUCT

2.01 Curtain

Curtain will be fabricated of horizontal 5/16" (8 mm) diameter aluminum (galvanized steel) (stainless steel) rods spaced vertically 2" (51 mm) o.c. maximum (1 1/2" (38 mm) optional) with a network of vertically interlocking links spaced horizontally 9" (229 mm) o.c. (3" (76 mm), 4 1/2" (114 mm), 6" (152 mm) optional) to form a straight pattern (brick pattern). (Optional protective polycarbonate panels, with steel (aluminum) (stainless steel) vertical links spaced 12" (305 mm) o.c.). Bottom bar will be an extruded aluminum tubular shape.

2.02 Guides

Guides will be extruded aluminum shapes. Guides will have retainer grooves with continuous silicon-treated wool-pile strips or PVC inserts to reduce noise and provide easy operation.



2.03 Brackets

Brackets will be minimum 3/16" (5 mm) thick steel plate to support the barrel, counterbalance (and hood).

2.04 Counterbalance

Counterbalance will be helical torsion springs housed in a steel pipe barrel, supporting the curtain with a deflection limited to .03" per foot (2.5 mm per meter) of width. Counterbalance will be adjustable by means of an adjusting tension wheel.

2.05 Hood

Optional hood will be 24-gauge galvanized primed steel minimum (aluminum) (stainless steel). Intermediate support bracket will be furnished to support hood where required on wider openings.

2.06 Finish

All aluminum will be furnished in a mill (clear anodized) (bronze anodized) finish. Stainless steel will be mill (No. 4) finish. All steel rods and links will be galvanized finish. All non-galvanized, exposed, ferrous surfaces will receive one coat of rust-inhibitive primer.

2.07 Operation

Grilles will be manual push-up (chain-hoist) (crank) (electric mount) operation.

2.08 Locking

Manual push-up doors will have slide-bolt locks, located coil side at each jamb. Chain-hoist door will have chain keepers suitable for padlocks by others. Electric motor operation door will lock through the operator gearing. (Optional cylinder locks will be provided with the doors.)

CAUTION: Cylinder locks operable interior, exterior or both are available. When specifying slide bolts or cylinder locks on electric motor doors, electric interlocks should also be specified to prevent operation when lock bolts are engaged in the guides.

PART 3 EXECUTION

3.01 Installation

Install the doors in accordance with Overhead Door Corporation instructions and standards, using an authorized Overhead Door Corporation distributor.

**Note to specifiers: Words in parentheses indicate frequently specified or highly recommended options.*

Installation and Service: Overhead Door Company of Huntsville.



Upward-Coiling Grilles

SERIES 672 673 674

Standard Features At a Glance

Operation	Manual
Curtain	
672	Aluminum frame surrounding and capturing 24" (610 mm) wide tempered glass with edges held in rigid vinyl spline in a straight lattice pattern.
673	Aluminum frame surrounding and capturing 12" (305 mm) wide polycarbonate panels in a straight lattice pattern.
674	Aluminum frame surrounding and capturing 24" (610 mm) wide 18 gage perforated steel panels in a straight lattice pattern. Perforations shall be 3/16" (4.76 mm) diameter holes on 7/32" (5.56 mm) staggered centers finished in silver powder coat.
Guide type	Aluminum extruded track member
Mounting	Face mount with wall angle or mounting between the jambs on 3" (76 mm) x 3" (76 mm) or 4" (102 mm) x 4" (102 mm) structural steel tubes
Finish	Clear anodized finish on all curtain parts. Mill finish on guide parts.
Lock	Cylinder

Options

- 24-gauge galvanized steel/aluminum hood
- Heavy-usage package
- Anodized finishes
 - Aluminum
 - Bronze
- Powder Coat
- Acrylic paint

The 672, 673 and 674 Series upward-coiling, full closure grilles offer light infiltration and visual access while maintaining security. These grilles are perfect for applications that require an upward-coiling grille that will allow for visual merchandising, but still need a secure barrier against theft, pilferage and debris, such as retail applications in parking garages, airports, concourses and malls.

All models are constructed of aluminum and have panel inserts of polished tempered glass (672), polycarbonate (673), and powder coat painted perforated steel (674).



Series 672



672 Series

Curtain: Aluminum frame surrounding and capturing 24" wide tempered glass with edges held in rigid vinyl spline in a straight lattice pattern.



674 Series

Curtain: Aluminum frame surrounding and capturing 24" wide 18 gauge perforated steel panels in a straight lattice pattern. Perforations shall be 3/16" diameter holes on 7/32" staggered centers finished in silver powder coat.



673 Series

Curtain: Aluminum frame surrounding and capturing 12" wide polycarbonate panels in a straight lattice pattern.

**Note: These patterns are not well suited to exterior use unless protected from direct exposure to weather.*

SECTION 08340 SECURITY GRILLES* 672 673 674

SERIES OVERHEAD COILING GRILLES

PART 1 GENERAL

1.01 Related Documents

All of the Contract Documents, including General and Supplementary Conditions, and Division I General Requirements, apply to the work of this Section.

1.02 Summary

The work of this Section includes overhead coiling security grilles. Related Sections: Other specification sections which directly relate to the work of this Section include, but are not limited to, the following:

Section 08710 - Finish Hardware; key cylinders for locks.
Section 16100 – Electrical, wiring.

1.03 Submittals

Product Data: Submit manufacturer's product data and installation instructions for each type of security grille. Include both published data and any specific data prepared for this project. Shop Drawings: submit shop drawings for approval prior to fabrication. Include detailed plans, elevations, details of framing members, required clearances, anchors, and accessories. Include relationship with adjacent materials.

1.04 Quality Assurance

Manufacturer: Security grilles shall be manufactured by a firm with a minimum of five years experience in the fabrication and installation of security grilles. Manufacturers proposed for use, which are not named in these specifications, shall submit evidence of ability to meet performance and fabrication requirements specified, and include a list of five projects of similar design and complexity completed within the past five years. Installer: Installation of security grilles shall be performed by an authorized representative of the manufacturer. Installer: Installation of security grilles shall be performed by an authorized representative of the manufacturer. Single Source Responsibility: Provide grilles, guides, motors, and related primary components from one manufacturer for each type of grille. Provide secondary components from source acceptable to manufacturer of primary components. Pre-Installation Conference: Schedule and convene a pre-installation conference just prior to commencement of field operations, to establish procedures to maintain optimum working conditions and to coordinate this work with related and adjacent work.

1.05 Delivery, Storage and Delivery, Storage, and handling

A. Deliver materials and products in labeled protective packages. Store and handle in strict compliance with manufacturer's instructions and recommendations. Protect from damage from weather, excessive temperatures and construction operations.

PART 2 PRODUCTS

2.01 ACCEPTABLE MANUFACTURER

Provide security grilles by Overhead Door Corporation, Pennsylvania Division; Telephone 800-2553 or 717-0131; Fax 800-1274.

2.02 Security Grilles

Trade Reference: 672/673/674 Series Overhead Coiling Grilles by Overhead Door Corporation.

2.03 Curtain

Horizontal double channel retainer extrusions with "V" groove line appearance on center, connect with a network of vertically interlocking end and mid connector panels to form a pattern which surrounds and captures infill panels. Bottom bar shall be an extruded aluminum tubular shape.

1. Material: Aluminum

2. Horizontal Double Channel Retainer: 3" (76 mm) on center.

3. Vertical End Connector Panels: To maximum of 12" (305 mm) wide at curtain ends.

4. Vertical Mid Connector Panel: 2" (51 mm) wide up to 10' (3048 mm) door width 4" wide 10' (3048 mm) to 15' (4572 mm) door width 6" (152 mm) wide 15' (4572 mm) to 27' (8230 mm) max. door width

672 — Infill Panels: 24" (610 mm) wide tempered glass with edges held in rigid vinyl spline in straight lattice pattern.

673 — Infill Panels: 12" (305 mm) wide polycarbonate panels in straight lattice pattern.

674 — Infill Panels: 24" (610 mm) wide 18 gauge perforated steel held in rigid vinyl spline in straight lattice pattern.

Perforations shall be 3/16" (4.76 mm) holes on 7/32" (5.56 mm) staggered centers. Finish shall be silver powder coat.

2.04 Finish

Components shall have the following finish. All non-galvanized, exposed ferrous surfaces shall receive one coat of rust-inhibitive primer. Aluminum curtain parts shall receive clear anodized finish. (Bronze anodized finish) (Acrylic painted) (Powder coated finish) Guide parts, mill (clear anodized) (Bronze anodized) (Acrylic painted) (Powder coated)

2.05 Guides

Extruded aluminum shapes with retainer grooves with continuous silicone treated wool pile strips or PVC inserts to reduce noise and assist operation.



2.07 Counterbalance

Helical torsion spring type. Counterbalance shall be housed in a steel tube or pipe barrel, supporting the curtain with deflection limited to 0.03" per foot (2.5 mm per meter) of span. Counterbalance shall be adjustable by means of an adjusting tension wheel.

2.08 Hood

672 — Not required, installation above ceiling. (Galvanized steel, 24 gauge) (Aluminum) hood with intermediate supports as required.

673 — Galvanized steel, 24 gauge (Primed steel, 24 gauge) (Aluminum) hood with intermediate supports as required. (Not required, installation above ceiling.)

674 — Galvanized steel, 24 gauge (Primed steel, 24 gauge) (Aluminum) hood with intermediate supports as required. (Not required, installation above ceiling.)

2.09 Manual Operation

Manual push up. (Chain hoist.)
(Crank operation optional.)

(Electric Motor Operation: Provide UL listed electric operator, size as recommended by manufacturer to move door in either direction at not less than 4" (102 mm) nor more than 1 (305 mm) foot per second.)

Sensing Edge Protection: (Pneumatic sensing edge.) (Electric sensing edge.)

Operator Controls: Push-button (Key) (Push-button and key) operated control stations with open, close, and stop buttons for surface (flush) mounting, for interior (exterior) (both interior and exterior) location.

Emergency Egress Device: Interior flush mounted handle mechanism to automatically open grille part way to permit passage even if power is not available.

Special Operation: (Vehicle detector operation, radio control operation, card reader control, photocell operation, door timer operation, commercial light package, explosion and dust ignition proof control wiring.)

2.10 Locking

(Cremona lock.) (Chain keeper locks for chain hoist operation.) (Cylinder lock for electric operation with interlock switch.) (Thumb turns.)

2.11 Framing

(Guides face mounted on adjacent construction.) (Free standing tubular steel support frames supplied with grilles.)

PART 3 EXECUTION 3.01 PREPARATION

Take field dimensions and examine conditions of substrates, supports, and other conditions under which this work is to be performed. Do not proceed with work until unsatisfactory conditions are corrected.

3.02 Installation

Strictly comply with manufacturer's installation instructions and recommendations. Coordinate installation with adjacent work to ensure proper clearances and allow for maintenance. Instruct Owner's personnel in proper operating procedures and maintenance schedule.

3.03 ADJUSTING AND CLEANING

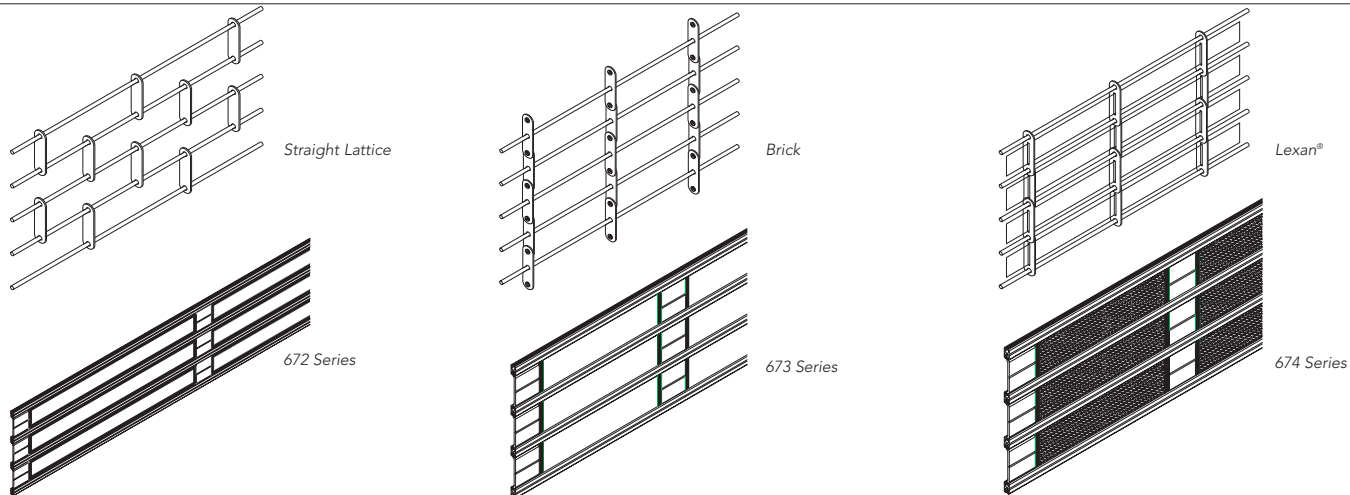
Test security grilles for proper operation and adjust as necessary to provide proper operation without binding or distortion. Touch-up damaged coatings and finishes and repair minor damage. Clean exposed surfaces using non-abrasive materials and methods recommended by manufacturer of material or product being cleaned.

©2002 Overhead Door Corporation. All Rights Reserved. A copyright license to reproduce this specification is hereby granted to non-manufacturing architects, engineers and specification writers.

Upward-Coiling Grilles, Grille Patterns, Face-of-Wall Clearance Dimensions

SERIES 670 671 672 673 674

Grille Patterns



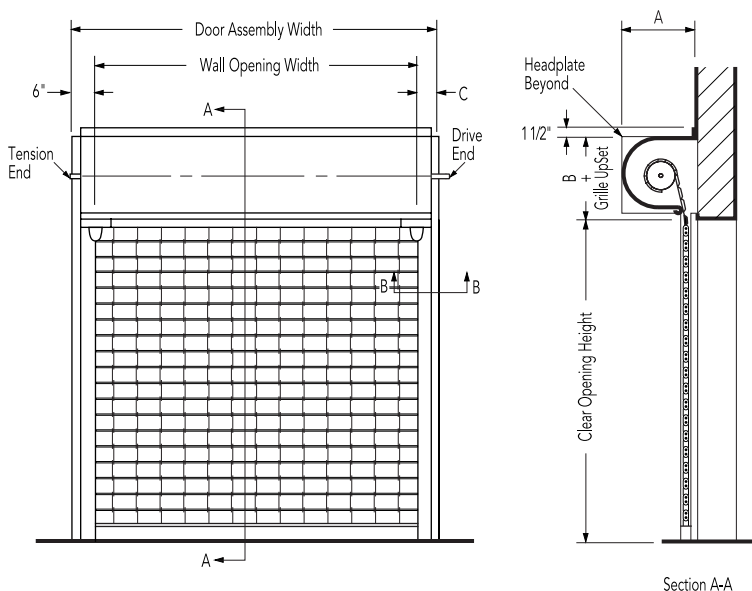
Note: These products allow air infiltration and are not weather tight.

Door Clearance Elevations

Face-of-Wall Mounted

Operation: Push-up, chain hoist, crank or electric.

For clearance details on electrically operated doors, see Motor Operator details on page 25.



Headroom and Sideroom Clearance Dimensions

Dimensions A and B	670/671	
Opening Height	"A"	"B"*
Thru 6'0" (1,829 mm)	15" (381mm)	17" (432mm)
Thru 11'0" (3,353 mm)	17" (432mm)	19" (483mm)
Thru 15'0" (4,572mm)	19" (483mm)	21" (533mm)
Thru 18'0" (5,486 mm)	21" (533 mm)	23" (584mm)
Thru 21'0" (6,400 mm)	23" (584 mm)	25" (635mm)
Thru 23'0" (7,010 mm)	25" (635 mm)	27" (686mm)
Thru 24'0" (7,315 mm)	27" (686 mm)	29" (737mm)

Grille UpSets	670/671/672/673/674		
	Manual w/o Weather Strip	Electric w/o Safety Edge	With Safety Edge
Double Angle Bottom Bar	1 3/4" (44 mm)	3 3/4" (95 mm)	5 1/4" (133 mm)
Tubular	2 1/2" (63 mm)	4 3/4" (121mm)	6 1/4" (159 mm)
Extruded "T"	1 3/4" (44 mm)	3 3/4" (95 mm)	5 1/4" (133 mm)

* If Motor Operated add 2 1/4" (57 mm) to B
* If Safety Edge add 3 3/4" (95 mm) to B

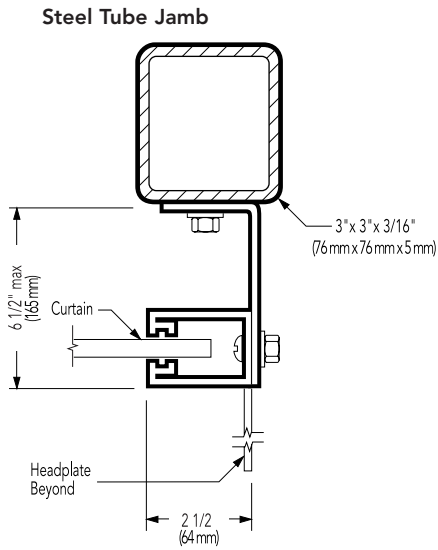
Dimension C	670/671/672/673/674	
Operation	"C"	Add to "A"
Chain STD	8 1/2" (216 mm)	
F.O.H. Chain	5 1/2" (140 mm)	+10" (254 mm)
Awning Crank	5 1/2" (140 mm)	+12" (305 mm)
Push-Up	5 1/2" (140 mm)	
Electric Model RDB & RG without Hoist	5 1/2" (140 mm)	
Electric Model RG with Hoist	9 1/2" (241 mm)	

Dimension A and B	672/673/674	
Opening Height	"A"	"B"
Thru 12'0"	15" (381 mm)	17" (432mm)
Thru 16'0"	17" (432mm)	19" (483mm)



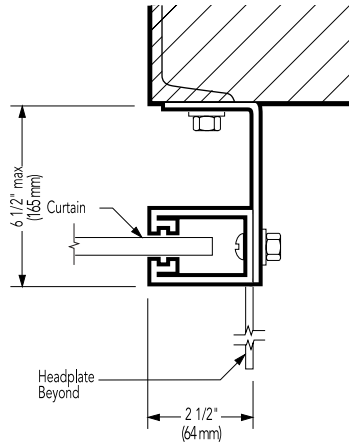
Guide Details

Face-of-Wall Mounted
Section B-B

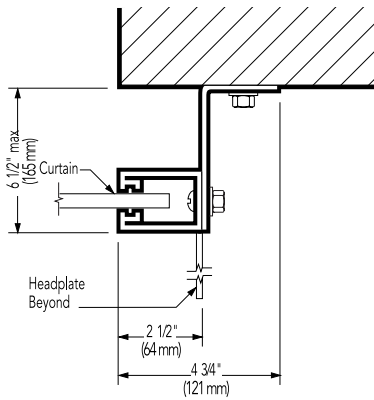


Steel tube requires coping out for drive clearance on crank or motor operated grilles

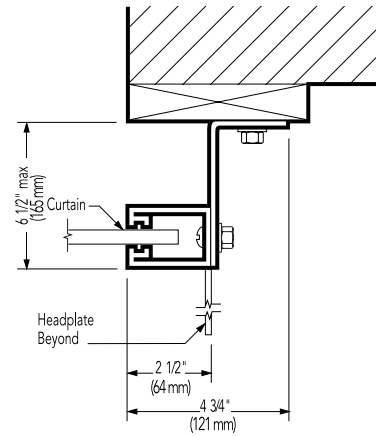
Steel Jamb



Masonry/Concrete Jamb



Wood Jamb



For more detailed information, refer to the Overhead Door Corporation's Architectural Design Manual, or consult your local Overhead Door Distributor.

Upward-Coiling Grilles Between Jambs Clearance Dimensions

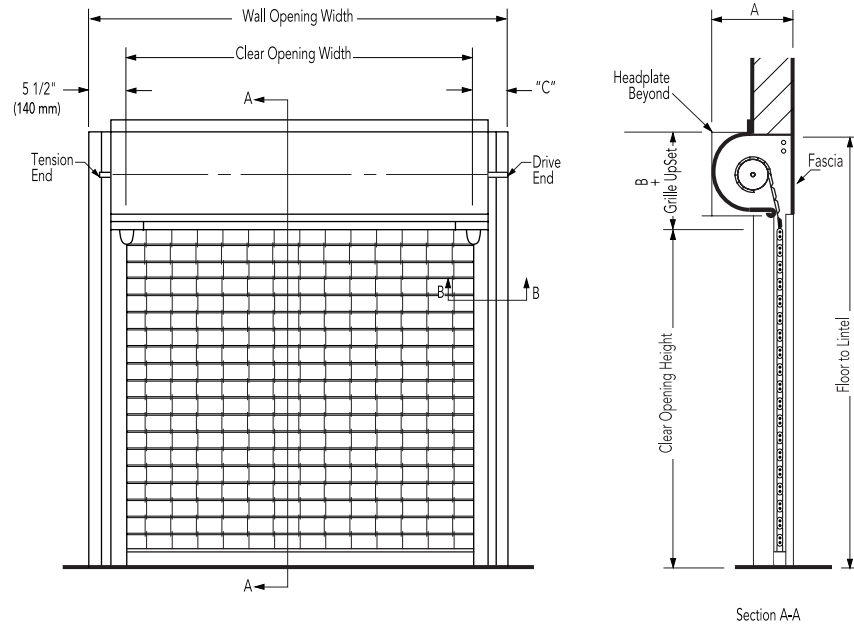
SERIES 670 671 672 673 674

Door Clearance Elevations

Between Jambs Mounted

Operation: Push-up, chain hoist, crank or electric.

For clearance details on electrically operated doors, see Motor Operator details on page 25.



Headroom and Sideroom Clearance Dimensions

Dimension A and B	670/671	
Opening Height	"A"	"B"
Thru 6'0" (1,829 mm)	15" (381mm)	17" (432mm)
Thru 11'0" (3,353 mm)	17" (432mm)	19" (483mm)
Thru 15'0" (4,572mm)	19" (483mm)	21" (533mm)
Thru 18'0" (5,486 mm)	21" (533 mm)	23" (584mm)
Thru 21'0" (6,400mm)	23" (584 mm)	25" (635mm)
Thru 23'0" (7,010mm)	25" (635mm)	27" (686mm)
Thru 24'0" (7,315mm)	27" (686 mm)	29" (737mm)

Grille UpSets	670/671/672/673/674		
	Manual w/o Weather Strip	Electric w/o Safety Edge	With Safety Edge
Double Angle Bottom Bar	1 3/4" (44 mm)	3 3/4" (95 mm)	5 1/4" (133 mm)
Tubular	2 1/2" (63 mm)	4 3/4" (121mm)	6 1/4" (159 mm)
Extruded "T"	1 3/4" (44 mm)	3 3/4" (95 mm)	5 1/4" (133 mm)

Dimension A and B	672/673/674	
Opening Height	"A"	"B"
Thru 12'0"	15" (381 mm)	17" (432mm)
Thru 16'0"	17" (432mm)	19" (483mm)

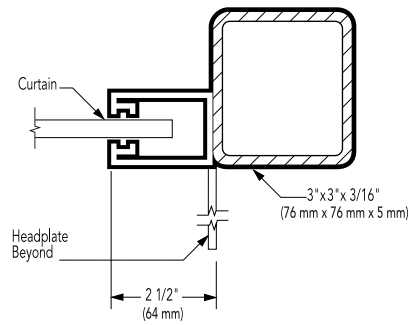
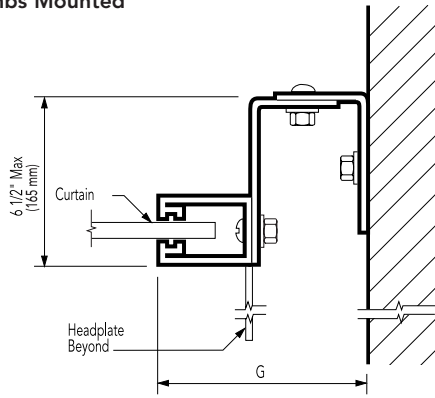
Dimension C	670/671/672/673/674	
Operation	"C"	Add to A
Chain STD	8 1/2" (216 mm)	
F.O.H. Chain	5 1/2" (140 mm)	+10" (254 mm)
Awning Crank	5 1/2" (140 mm)	+12" (305 mm)
Push-Up	5 1/2" (140 mm)	
Electric Model RDB & RG without Hoist	5 1/2" (140 mm)	
Electric Model RG with Hoist	9 1/2" (241 mm)	

* If Motor Operated add 2 1/4" (57 mm) to B
* If Safety Edge add 3 3/4" (95 mm) to B



Guide Details

Between Jamb Mounted
Section B-B



Steel tube requires coping out. Consult factory for dimensions.

Door Clearance Dimensions

Dimension G*

Operation	"G"
Chain	9" (229 mm)
Crank	9" (229 mm)
Push-Up	6" (152 mm)
Electric	9 1/4" (238 mm)

* For max. door opening height

Installation and Service: Overhead Door Company of Huntsville.



Electric Operators (Upward Coiling Grilles Only)

Operator Control Options

- Entrapment protection: electric sensing edge, pneumatic sensing edge, or photoelectric sensors
- Non-electric operation emergency egress with uninterruptible power supply
- Ground-level chain hoists for emergency or hand operation standard on Model MD and Model RDB+ (optional on Model RG+)
- Push-button, key or combination stations; surface-or flush-mounted for interior and/or exterior locations
- Vehicle detectors, key card reader, photocell and door timer controls
- Treadle or pull switch stations
- Telephone entry and coded keyboard stations
- Universal programmable door timer
- Radio control systems (24 VAC or 120 VAC)

Recommended Safety Features

Overhead Door Corporation strongly recommends the use of interlock switches, an electrically-controlled emergency egress option, and an electric safety edge for all electrically operated upward coiling grilles. If a sensing edge or other reversing device is not installed, a constant-contact control switch must be used to close the door. We recommend a self-monitoring, four-wire, fail-safe electric sensing edge.

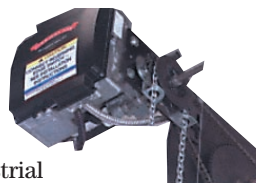
Entrapment Protection

The installation of an external reversing device for all electrically operated commercial doors is recommended. If a sensing edge or other reversing device is not installed, a constant-contact control switch must be used to close the door. We recommend a four-wire, fail-safe electric sensing edge that will not allow the door to close if the sensing edge is damaged or not working properly.

NEW Operator Model

ArmorDrive™

The ArmorDrive comes available with a 1/2 hp or 1 hp motor. This full-featured, modular door control system lifts every door in our commercial and industrial lines – from sectional doors and security grilles to the largest rolling steel service door. Customized mounting kits accommodate your specific door type, configuration and installation scenario.



Overhead Door Corporation offers the broadest line of electric operators to suit new construction and retrofit applications, as well as unusual or special requirements. Manufactured by Overhead Door Corporation to meet the exacting performance requirements of Overhead Door's upward-acting doors, our ribbon branded operators afford precise control of door action for years of trouble-free operation.

In order to improve safety and enhance door and motor life, industry quality assurance guidelines recommend the choice of a single manufacturer for both door and operator applications. Overhead Door Corporation is the only national manufacturer of a full line of commercial and industrial doors and operators specifically designed for integral applications.

Operator Models

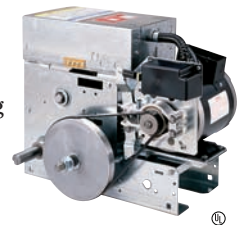
Model MD

Model MD is a belt-driven commercial operator designed to operate upward coiling grilles up to 387 sq. ft. (35,953 sq. mm). It is available with a 1/2 HP motor as a side-mounted unit. (Hoist available)



Model RG+

Model RG+ is a heavy-duty, belt-driven commercial operator designed for use with upward coiling grilles to 500 sq. ft. (46,451 sq. mm). It is available with a 1/3 HP, 1/2 HP or 3/4 HP motor. Ground-level chain hoists for emergency or hand operation are optional (but not available for left-handed, bench-mounted operators). An non-electric emergency egress system UPS option is available.



Model RDB+

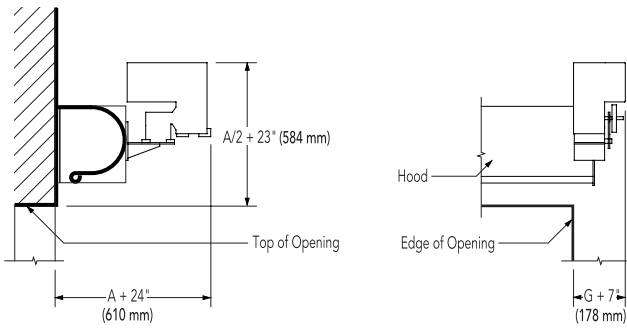
Model RDB+ is a heavy-duty, gear-reduced commercial operator designed for use with upward coiling grilles to 740 sq. ft. (68,748,249 sq. mm). Ground-level chain hoists for emergency or hand operation are standard. It is available with a 1/2 HP, 1 HP or 2 HP motor.



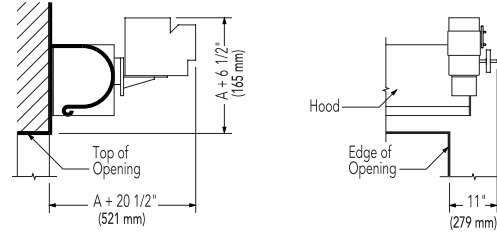


Mounting Details

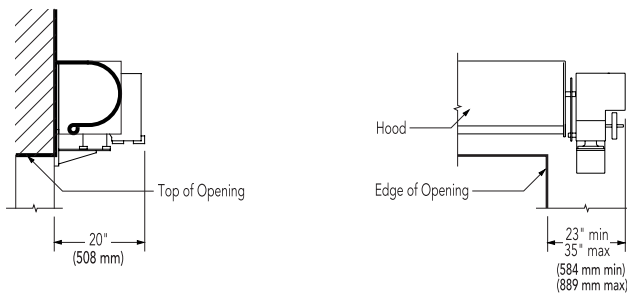
Front-of-Hood Mounted-RDB+



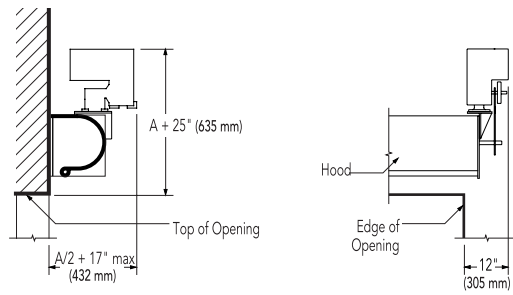
Front-of-Hood Mounted*-RG+



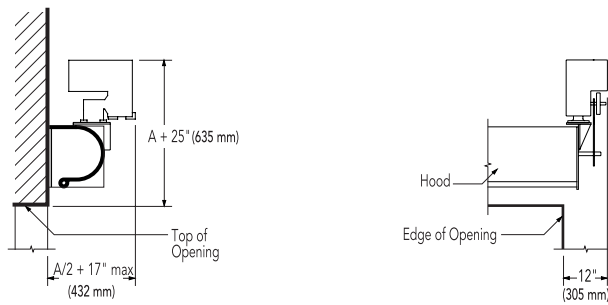
Wall Mounted (Below Shaft)-RDB+



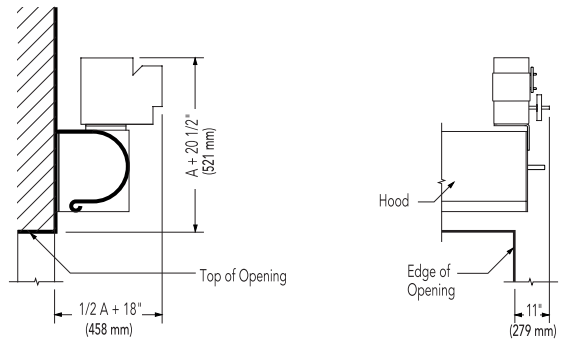
Wall Mounted (Below Shaft)-RG+



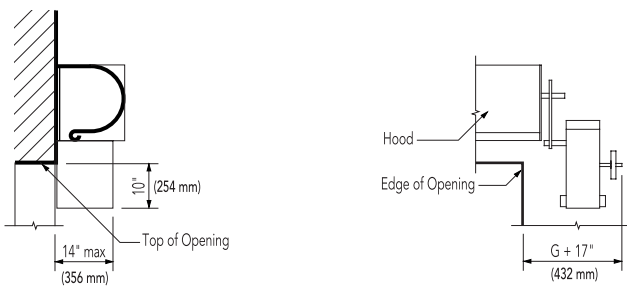
Top-of-Hood Mounted -RDB+



Top-of-Hood Mounted-RG+



Wall Mounted (Below Shaft)-MD



Note: For "A" and "G" dimensions, refer to Headroom and Guide Clearance Dimension charts applicable to door type selected.

* Front-of-Hood mounted also available on between jambs mounted doors.

For more detailed information, refer to the Overhead Door Corporation's Architectural Design Manual, or consult your local Overhead Door Distributor.

The Original, Innovative Choice for Unequaled Quality and Service

Overhead Door Corporation pioneered the upward-acting door industry, inventing the first upward-acting door in 1921 and the first electric door operator in 1926. Today, we continue to be the industry leader through the strength of our product innovation, superior craftsmanship and outstanding customer support, underscoring a legacy of quality, expertise and integrity. That's why design and construction professionals specify Overhead Door Corporation products more often than any other brand.

The red Overhead Door Ribbon is a mark of quality that also reflects the pride we take in the people who support our products. Our family of 400 Ribbon distributors across the country not only share our name and logo, but also our commitment to excellence. Your Ribbon distributor will work with you in a consultative role to ensure that product selections achieve your design and application requirements — in addition to providing expert installation, professional field service and ongoing maintenance. From project design and manufacturing to installation and service, the Overhead Door Ribbon is your guarantee of genuine quality and turnkey service excellence.

Together with our Ribbon distributors, we offer comprehensive technical information and resource materials to support your project, including:

- Architectural Design Manual – a comprehensive guide to selecting, specifying and detailing all commercial and industrial Overhead Door products
- Sweet's Catalog for selection information about our products, and Sweet's CD and CD-CAD for convenient electronic product information, technical specifications, and details with CAD "cut-and-paste" capability
- Operation & Maintenance Manual – detailed product information, customized for your project, to ensure reliable, long-life door system operation
- Custom design and technical assistance through our Corporate Application Engineering Teams



JetRoll® High Speed Doors



Fire Doors



Thermacore® Sectional Doors



Rolling Service Doors

Today, Overhead Door Corporation — as well as its divisions, which include W.B. McGuire Co. for loading dock equipment and impact traffic doors, and Horton Automatics for automated pedestrian entrances — is recognized as the leading, single-source manufacturer of integrated door and operator systems for commercial, industrial and residential applications. With multiple manufacturing locations throughout the United States, a state-of-the-art International Technical Center for design and engineering, and a national network of authorized Ribbon distributors, our capabilities are leading-edge and our field service and technical support second to none. Built best and backed best, Overhead Door is the industry's leading choice for quality that shows and lasts.

To talk with the Overhead Door Distributor nearest you, call 1-800-887-DOOR.

Overhead Door Corporation

1900 Crown Drive
Farmers Branch, Texas 75234
(800) 275-3290 Telephone
(972) 233-0367 Facsimile
www.OverheadDoor.com



INDUSTRY LEADING
COMMERCIAL & INDUSTRIAL SOLUTIONS

©2005 Overhead Door Corporation
Form #: C900-038 4M 05/05 CEN

The Overhead Door Corporation family of quality commercial and industrial products includes:



A part of Sanwa Shutter Corporation

Consistent with our policy of continuing product improvement, we reserve the right to change product specifications without notice or obligation