



511 SOUTH 7TH STREET
DELANO MN 55328
Phone: 763.972.2981
Fax: 763.972.2911

www.industriallouvers.com
ilinfo@industriallouvers.com

MODEL 250XPI

STANDARD CONSTRUCTION

Blades to be .063" extruded aluminum 6063 mounted on 2" x 2" x 1/4" aluminum support angles.

Finish to be mill.

INSTALLATION

Model 250XPI should be installed in accordance with manufacturers recommended attachment method and in accordance with state and federal building codes.

WARRANTY

All materials and workmanship are warranted for a period of 1 year from date of completion.

MAINTENANCE

None required.

FEATURES

- All sizes are custom fabricated to meet project requirements.
- Clip angles for installation.

OPTIONAL ACCESSORIES

Many optional accessories to the basic design are available at an additional cost. They include:

- Hinged access panels.
- Cap flashing at head.
- Visible or invisible mullions for multiple section requirements.
- Anodized or Kynar finish

Please contact the factory for other special requirements.

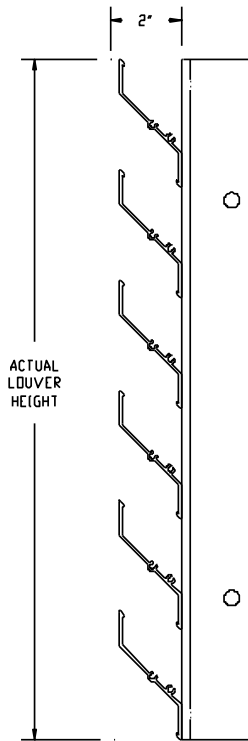
SUGGESTED SPECIFICATIONS

Furnish and install where indicated on the drawings ILI equipment screen Model 250-XPI inverted blade screen as manufactured by Industrial Louvers, Inc., Delano, MN. Inverted blades shall be fabricated from .063" extruded aluminum. Vertical supports shall consist of 2" x 2" x 1/4" aluminum angles at a maximum of 36" o.c.

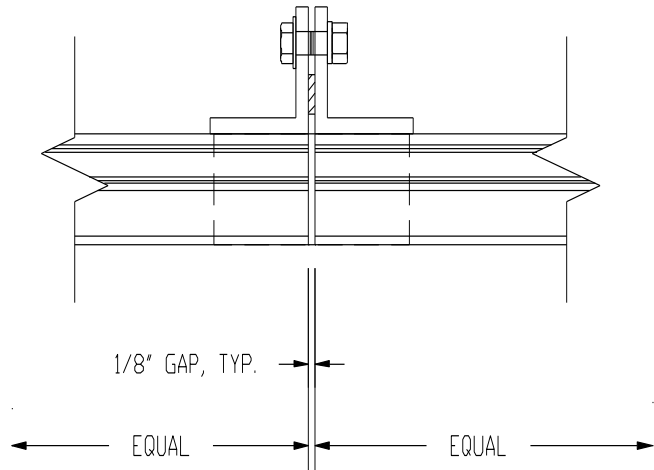
CATALOG NO. 250XPI

Rev: AUG. 2010

MODEL 250XPI



VERTICAL SECTION



INVISIBLE MULLION DETAIL

ACCESSORIES:

- FINISH _____
- COLOR _____
- OTHER _____

| ITEM NO. | QTY | SIZE | | Actual <input type="checkbox"/> | M.O. <input type="checkbox"/> | MULLION TYPE | NO. OF SECTIONS | REMARKS |
|----------|-----|-------|--------|---------------------------------|-------------------------------|--------------|-----------------|---------|
| | | WIDTH | HEIGHT | | | | | |
| | | | | | | | | |
| | | | | | | | | |
| | | | | | | | | |

| | |
|-------------------------|---|
| PROJECT _____ | REPRESENTATIVE _____ |
| LOCATION _____ | ILI JOB NO. _____ REP NO. _____ |
| ARCH/ENGR. _____ | Industrial Louvers, Inc. Phone: 763-972-2981 |
| CONTRACTOR _____ | 511 South 7th Street Fax: 763-972-2911 |
| DATE _____ | Delano, MN 55328 |
| | CATALOG NO. 250XPI Rev: AUG. 2010 |