



511 SOUTH 7TH STREET
DELANO MN 55328
Phone: 763.972.2981
Fax: 763.972.2911

www.industriallouvers.com
ilinfo@industriallouvers.com

MODEL PS-100 SUNSHADE

STANDARD CONSTRUCTION

- Perforated panel to be fabricated from 5005-H34 aluminum perforated sheet.
- Outriggers fabricated from 6063-T6 extruded aluminum flat bar. Custom shapes & sizes available.
- Fascia and building side frame to be fabricated from 6063-T6 extruded aluminum tube, minimum wall thickness .125".
- Suspension rods/cables available upon request.
- Finish to be mill. (Kynar and anodized finishes available upon request).

INSTALLATION

Model PS-100 should be installed in accordance with manufacturers recommended attachment method and in accordance with state and federal building codes.

WARRANTY

All materials and workmanship are warranted for a period of 1 year from date of completion.

MAINTENANCE

None required.

FEATURES

- All sizes are custom fabricated to meet project requirements.
- Straight or segmented
- Mounting brackets

Please contact the factory for other special requirements.

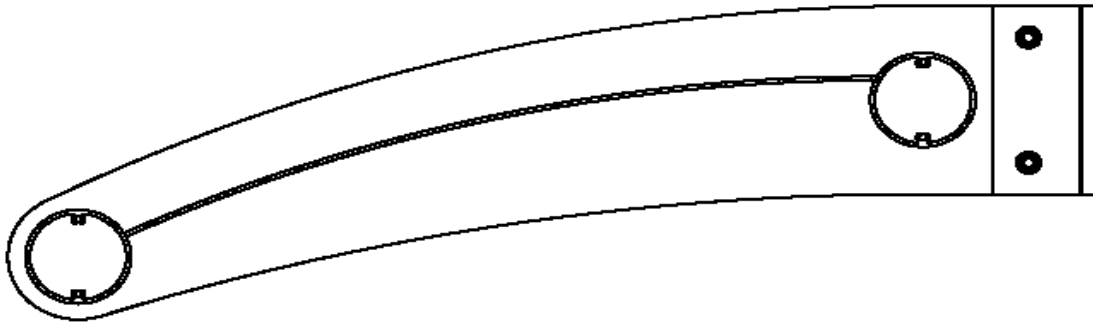
SUGGESTED SPECIFICATIONS

Furnish and install where indicated on the drawings ILI extruded aluminum sunshade Model PS-100 as manufactured by Industrial Louvers, Inc., Delano, MN. Perforated panel shall be fabricated of .125" 5005-H34 aluminum sheet. Fascia and building side frame shall be fabricated from .125" extruded aluminum tube alloy 6063. Outriggers shall be fabricated from flat bar material with a min. thickness of .25". Suspension brackets (where required) shall be of size sufficient to support specified wind load requirements. Mounting brackets shall be shipped loose.

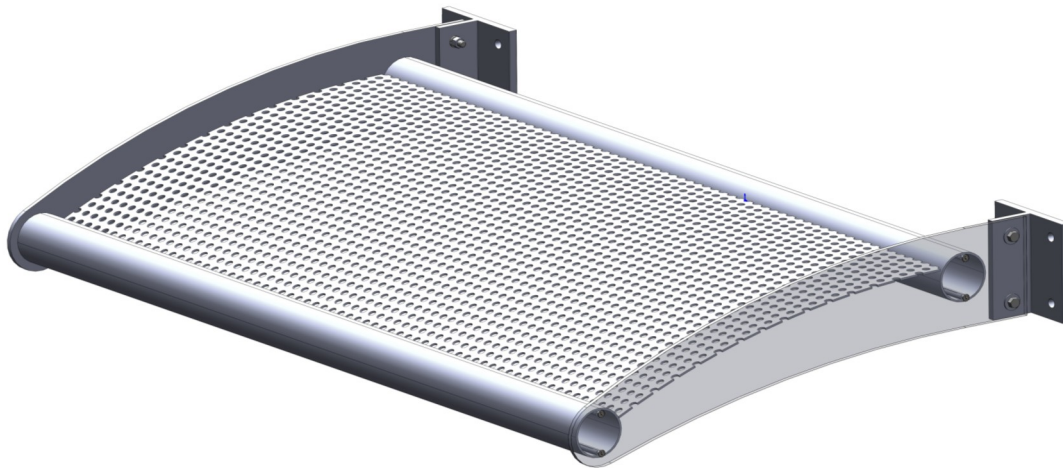
CATALOG NO. PS-100

Rev: AUG. 2010

MODEL PS-100



STANDARD HORIZONTAL SECTION



STANDARD ASSEMBLY

* CUSTOM SIZES AVAILABLE UPON REQUEST

CATALOG NO. PS-100

Rev: AUG. 2010



511 SOUTH 7TH STREET
DELANO MN 55328
Phone: 763.972.2981
Fax: 763.972.2911

www.industriallouvers.com
ilinfo@industriallouvers.com