



511 SOUTH 7TH STREET
DELANO MN 55328
Phone: 763.972.2981
Fax: 763.972.2911

www.industriallouvers.com
ilinfo@industriallouvers.com

MODEL 254

STANDARD CONSTRUCTION

Frame and blades to be 2" deep .063 extruded aluminum 6063 alloy.

1/2" mesh .063 flattened expanded aluminum bird screens in a removable extruded aluminum frame.

Finish to be mill.

INSTALLATION

Model 254 should be installed in accordance with manufacturers recommended attachment method and in accordance with state and federal building codes.

WARRANTY

All materials and workmanship are warranted for a period of 1 year from date of completion.

MAINTENANCE

None required.

FEATURES

- All sizes are custom fabricated to meet project requirements.
- Narrow profile.
- Channel frame.
- Clip angles for installation.
- All welded assembly.

OPTIONAL ACCESSORIES

Many optional accessories to the basic design are available at an additional cost. They include:

- Extended sill flashing
- Flanged frames of various sizes
- Hinged access panels
- Subframes
- Continuous perimeter angles
- Visible or invisible mullions for multiple section requirements.
- Anodized, Baked Enamel or Kynar finish

Please contact the factory for other special requirements.

SUGGESTED SPECIFICATIONS

Furnish and install where indicated on the drawings ILI extruded aluminum thinline storm-resistant Model 254 louvers as manufactured by Industrial Louvers, Inc., Delano, MN. Frames and blade thickness are to be .063" extruded aluminum 6063 alloy. Sill and jamb frames shall be continuously welded and caulked to help prevent water penetration to interior wall construction. Blades are attached by means of all-welded construction.

The louvers shall have a minimum of 7.03 sq. ft. (44%) free area on a 48 inch x 48 inch louver.

CATALOG NO. 254

Rev: JULY 2010

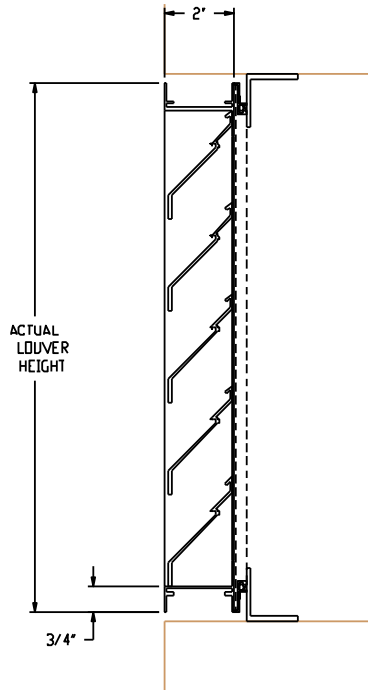
MODEL 254

Free Area in Square Feet And Square Meters

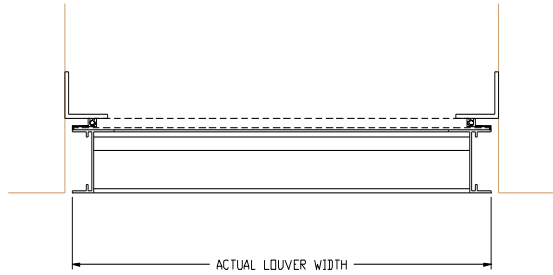
Free Area for openings up to 72" X 120". For free area data for larger openings, contact factory.						
FREE AREA IN SQUARE FEET AND SQUARE METERS						
3048. mm	0.392	0.859	1.326	1.794	2.261	2.728
120"	4.220	9.048	13.876	18.704	23.532	28.36
2743.2 mm	0.351	0.770	1.188	1.607	2.025	2.444
108"	3.754	8.086	12.417	16.748	21.080	25.411
2438.4 mm	0.310	0.680	1.050	1.420	1.790	2.159
96"	3.288	7.123	10.958	14.793	18.627	22.462
2133.6 mm	0.270	0.591	0.912	1.233	1.554	1.875
84"	2.822	6.161	9.499	12.837	16.175	19.513
1828.8 mm	0.229	0.501	0.774	1.046	1.318	1.591
72"	2.356	5.198	8.040	10.881	13.723	16.564
1524. mm	0.188	0.412	0.635	0.859	1.083	1.306
60"	1.891	4.236	6.581	8.926	11.271	13.616
1219.2 mm	0.147	0.322	0.497	0.672	0.847	1.022
48"	1.425	3.273	5.121	6.970	8.818	10.667
914.4 mm	0.107	0.233	0.359	0.485	0.611	0.738
36"	0.959	2.311	3.662	5.014	6.366	7.718
609.6 mm	0.066	0.143	0.221	0.298	0.376	0.453
24"	0.493	1.348	2.203	3.058	3.914	4.769
304.8 mm	0.025	0.054	0.083	0.111	0.140	0.169
12"	0.027	0.386	0.744	1.103	1.461	1.82
H/W	304.8 mm	609.6 mm	914.4 mm	1219.2 mm	1524. mm	1828.8 mm
	12"	24"	36"	48"	60"	72"



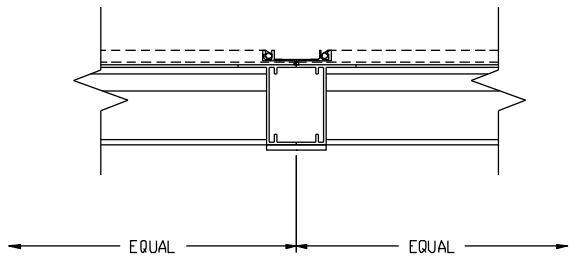
MODEL 254



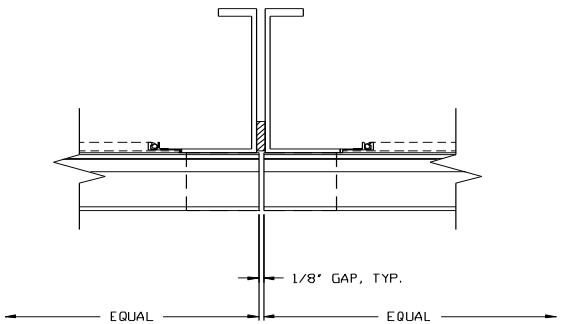
VERTICAL SECTION



HORIZONTAL SECTION



VISIBLE MULLION DETAIL



INVISIBLE MULLION DETAIL

ACCESSORIES:

- SILL FLASHING - DEPTH _____
- SCREEN _____
- FINISH _____
- COLOR _____
- OTHER _____

ITEM NO.	QTY	SIZE		M.O.	MULLION TYPE	NO. OF SECTIONS	REMARKS
		Actual	Width				
		<input type="checkbox"/>		<input type="checkbox"/>			

PROJECT _____	REPRESENTATIVE _____
LOCATION _____	ILI JOB NO. _____ REP NO. _____
ARCH/ENGR. _____	Industrial Louvers, Inc. Phone: 763-972-2981
CONTRACTOR _____	511 South 7th Street Fax: 763-972-2911
DATE _____	Delano, MN 55328
	CATALOG NO. 254 Rev: JULY 2010