



511 SOUTH 7TH STREET
DELANO MN 55328
Phone: 763.972.2981
Fax: 763.972.2911

www.industriallouvers.com
ilinfo@industriallouvers.com

MODEL 155-45

STANDARD CONSTRUCTION

Frames and blades to be 1-1.2" deep .063 extruded aluminum 6063 alloy.

1/2" mesh .063 flattened expanded aluminum bird screens in a removable extruded aluminum frame.

Finish to be mill.

INSTALLATION

Model 155-45 should be installed in accordance with manufacturers recommended attachment method and in accordance with state and federal building codes.

WARRANTY

All materials and workmanship are warranted for a period of 1 year from date of completion.

MAINTENANCE

None required.

FEATURES

- All sizes are custom fabricated to meet project requirements.
- High free area.
- Channel frame.
- Narrow profile.
- Clip angles for installation.

OPTIONAL ACCESSORIES

Many optional accessories to the basic design are available at an additional cost. They include:

- Extended sill flashing
- Flanged frames of various sizes
- Hinged access panels
- Subframes
- Continuous perimeter angles
- Visible or invisible mullions for multiple section requirements.
- Anodized, Baked Enamel or Kynar finish

Please contact the factory for other special requirements.

SUGGESTED SPECIFICATIONS

Furnish and install where indicated on the drawings ILI extruded aluminum thinline storm-resistant Model 155-45 louvers as manufactured by Industrial Louvers, Inc., Delano, MN. Frames and blade thickness are to be .063" extruded aluminum 6063 alloy. Sill and jamb frames shall be continuously welded and caulked to help prevent water penetration to interior wall construction. Blades are attached by means of mechanically fastened construction.

The louvers shall have a minimum of 7.29 sq. ft. (46%) free area on a 48 inch x 48 inch louver.

CATALOG NO. 155-45

Rev: JULY 2010

MODEL 155-45

Free Area in Square Feet And Square Meters

Free Area for openings up to 72" X 120".

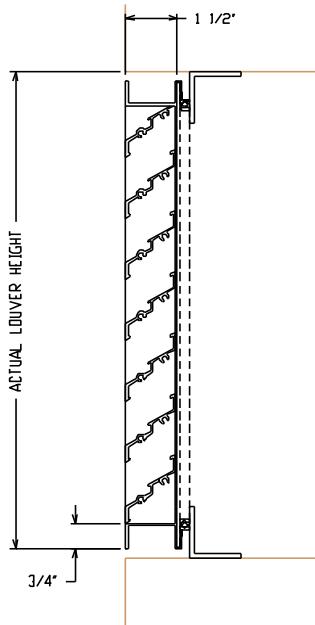
For free area data for larger openings, contact factory.

FREE AREA IN SQUARE FEET AND SQUARE METERS

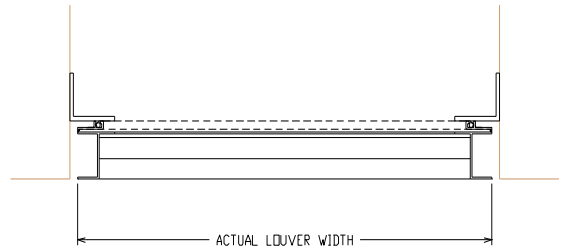
3048. mm	0.400	0.858	1.316	1.773	2.231	2.689
120"	4.310	9.238	14.166	19.094	24.022	28.95
2743.2 mm	0.359	0.769	1.180	1.591	2.001	2.412
108"	3.866	8.286	12.706	17.127	21.547	25.968
2438.4 mm	0.318	0.681	1.045	1.408	1.772	2.135
96"	3.421	7.334	11.247	15.160	19.073	22.986
2133.6 mm	0.276	0.593	0.909	1.225	1.542	1.858
84"	2.977	6.382	9.787	13.193	16.598	20.003
1828.8 mm	0.235	0.504	0.773	1.043	1.312	1.581
72"	2.532	5.430	8.328	11.226	14.123	17.021
1524. mm	0.194	0.416	0.638	0.860	1.082	1.304
60"	2.088	4.478	6.868	9.258	11.649	14.039
1219.2 mm	0.153	0.328	0.502	0.677	0.852	1.027
48"	1.643	3.526	5.409	7.291	9.174	11.057
914.4 mm	0.111	0.239	0.367	0.495	0.622	0.750
36"	1.199	2.574	3.949	5.324	6.699	8.074
609.6 mm	0.070	0.151	0.231	0.312	0.392	0.473
24"	0.754	1.622	2.490	3.357	4.225	5.092
304.8 mm	0.029	0.062	0.096	0.129	0.163	0.196
12"	0.310	0.670	1.030	1.390	1.750	2.11
H/W	304.8 mm	609.6 mm	914.4 mm	1219.2 mm	1524. mm	1828.8 mm
	12"	24"	36"	48"	60"	72"



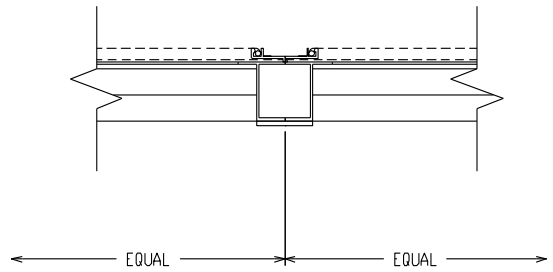
MODEL 155-45



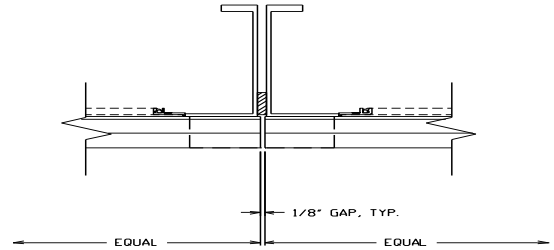
VERTICAL SECTION



HORIZONTAL SECTION



VISIBLE MULLION DETAIL



INVISIBLE MULLION DETAIL

ACCESSORIES:

- SILL FLASHING - DEPTH _____
- SCREEN _____
- FINISH _____
COLOR _____
- OTHER _____

ITEM NO.	QTY	SIZE		M.O.	MULLION TYPE	NO. OF SECTIONS	REMARKS
		Actual	Width				
		<input type="checkbox"/>		<input type="checkbox"/>			

PROJECT _____ **REPRESENTATIVE** _____
LOCATION _____ **ILI JOB NO.** _____ **REP NO.** _____
ARCH/ENGR. _____ Industrial Louvers, Inc. Phone: 763-972-2981
511 South 7th Street Fax: 763-972-2911
Delano, MN 55328
CONTRACTOR _____
DATE _____ CATALOG NO. 155-45 Rev: JULY 2010