



511 SOUTH 7TH STREET
 DELANO MN 55328
 Phone: 763.972.2981
 Fax: 763.972.2911

www.industriallouvers.com
 ilinfo@industriallouvers.com

MODEL 658

STANDARD CONSTRUCTION

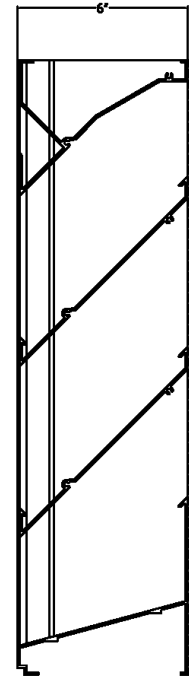
- **Material:** Extruded Aluminum 6063-T6
- **Frame:** 6" (152mm) deep, .081" (2.1mm) nominal wall thickness
- **Blades:** 6" (152mm) deep, .081" (2.1mm) nominal wall thickness
- **Blade Spacing:** 6" (152mm) on center
- **Screen:** 1/2" x .063" flattened expanded bird screen and/or 18 x 14 mesh charcoal insect screen.
- **Finish:** Mill

OPTIONAL ACCESSORIES

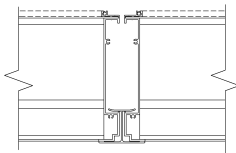
- Extended Sill Flashing
- Insulated and Non-insulated Blank-off Panels
- Flanged & Glazing Frames of various sizes
- Hinged Access Panels
- Sub-frames
- Visible Mullions
- Invisible Mullions for continuous blade appearance

FINISHES

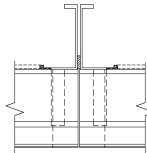
- **2 Coat Fluoropolymer:** Kynar 500 / Hylar 5000 custom colors available in 70% PVDF (AAMA 2605) or 50% PVDF (AAMA 2604) formulas.
- **3 Coat Fluoropolymer:** Kynar 500 / Hylar 5000 custom colors available in 70% PVDF (AAMA 2605) formulas.
- **Anodic Finishes:** Class I and Class II in Clear, Light/Medium/Dark Bronze, Champagne, and Black.
- **Prime Coat**
- **Mill**



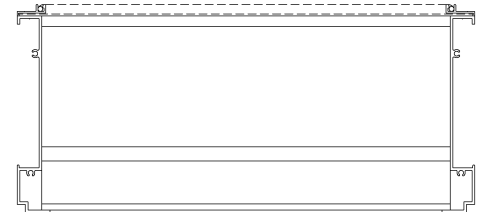
Vertical Section



Visible Vertical Mullion



Invisible Vertical Mullion



Plan View

Qty	Size: Actual <input type="checkbox"/> M.O. <input type="checkbox"/>		MULLION TYPE	NO. OF SECTIONS	NOTES
	WIDTH	HEIGHT			
<input type="checkbox"/>	SILL FLASHING:				PROJECT:
<input type="checkbox"/>	SCREEN:				LOCATION:
<input type="checkbox"/>	FINISH:				ARCHITECT:
<input type="checkbox"/>	COLOR:				REPRESENTATIVE:
<input type="checkbox"/>	OTHER:				DATE: JOB #:

MODEL 658

SUGGESTED SPECIFICATIONS

General: Furnish and install where indicated on drawings 6" (152mm) Weather Resistant Drainable Louver Model 658 as manufactured by Industrial Louvers, Inc., Delano, MN.

Material: Extruded aluminum frames and blades shall be one piece 6063-T6 alloy, designed to collect and drain water to the exterior at the sill by means of integral gutters in the blades and jamb frames. Frame shall have a material thickness of .081" (2.1mm). Fixed blades shall have a material thickness of .081" (2.1mm). Frames and blades shall be joined by stainless steel mechanical fastener, and frame will be caulked to prevent water penetration to interior wall construction.

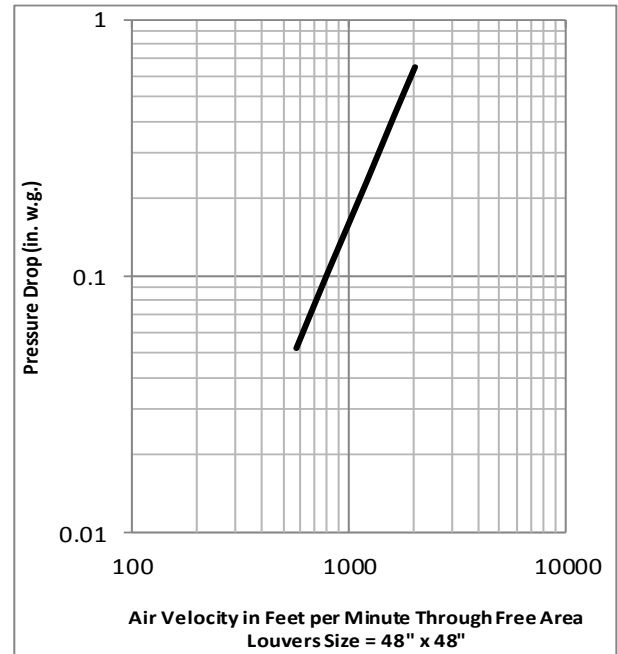
Performance

- Free area (4' x 4' louver) = 8.31sq. ft. (51.9%)
- Free area velocity at point of beginning water penetration (.01 oz/sq. ft.) = 1109.3 fpm
- Pressure drop @ 976.1 FPM velocity = .15" water
- Air volume @ 976.1 FPM free area velocity = 8,111.39 CFM

Free Area

Square Feet (Square Meters)						
For free area data for larger openings, contact factory.						
3048.0	0.45	0.98	1.52	2.06	2.60	3.13
120	4.82	10.60	16.38	22.16	27.94	33.72
2743.2	0.40	0.88	1.36	1.84	2.33	2.81
108	4.32	9.49	14.67	19.85	25.03	30.21
2438.4	0.35	0.78	1.20	1.63	2.05	2.48
96	3.81	8.39	12.97	17.54	22.12	26.70
2133.6	0.31	0.68	1.05	1.42	1.78	2.15
84	3.31	7.29	11.26	15.23	19.21	23.18
1828.8	0.26	0.63	0.97	1.31	1.65	1.99
72	2.81	6.73	10.41	14.08	17.75	21.42
1524	0.21	0.47	0.73	0.99	1.24	1.50
60	2.31	5.08	7.85	10.61	13.38	16.15
1219.2	0.17	0.37	0.57	0.77	0.97	1.17
48	1.81	3.97	6.14	8.31	10.47	12.64
914.4	0.12	0.27	0.41	0.56	0.70	0.85
36	1.30	2.87	4.43	6.00	7.56	9.12
609.6	0.07	0.16	0.25	0.34	0.43	0.52
24	0.80	1.76	2.73	3.69	4.65	5.61
304.8	0.03	0.06	0.09	0.13	0.16	0.19
12	0.30	0.66	1.02	1.38	1.74	2.10
H/W	304.8	609.6	914.4	1219	1524	1829
	12	24	36	48	60	72

Air Performance Chart



Water Penetration Chart

