



511 SOUTH 7TH STREET
DELANO MN 55328
Phone: 763.972.2981
Fax: 763.972.2911

www.industriallouvers.com
ilinfo@industriallouvers.com

MODEL 458DD

STANDARD CONSTRUCTION

Frame and blades to be 4" deep .081 extruded aluminum 6063 alloy.

1/2" mesh .063 flattened expanded aluminum bird screens in a removable extruded aluminum frame.

Finish to be mill.

INSTALLATION

Model 458DD should be installed in accordance with manufacturers recommended attachment method and in accordance with state and federal building codes.

WARRANTY

All materials and workmanship are warranted for a period of 1 year from date of completion.

MAINTENANCE

None required.

FEATURES

- All sizes are custom fabricated to meet project requirements.
- rain gutters running the full length of the blade
- Integral water spouts at the jambs to drain water from the blades to the exterior of the building.
- Clip angles for installation.
- All welded assembly.

OPTIONAL ACCESSORIES

Many optional accessories to the basic design are available at an additional cost. They include:

- Extended sill flashing
- Flanged frames of various sizes
- Hinged access panels
- Subframes
- Continuous perimeter angles
- Visible or invisible mullions for multiple section requirements.
- Anodized, Baked Enamel or Kynar finish

Please contact the factory for other special requirements.

SUGGESTED SPECIFICATIONS

Furnish and install where indicated on the drawings ILI extruded aluminum dual drainable blade Model 458DD louvers as manufactured by Industrial Louvers, Inc., Delano, MN. Extruded aluminum frame and blades shall be designed to collect and drain water to exterior at sill by means of gutters in front edges of blades and downspouts in jambs. Frames shall incorporate a drainable top blade. Frames and blade thickness to be .081" extruded aluminum 6063 alloy. Sill and jamb frames shall be continuously welded and caulked to help prevent water penetration to interior wall construction. Blades are attached by means of all-welded construction.

The louvers shall have a minimum of 9.44 sq. ft. (59%) free area on a 48 inch x 48 inch louver. The testing shall show a maximum water penetration of .01 oz. at an air flow of 786 FPM. Static Pressure Loss to be not more than .15 inch of water gage at an air flow of 845 FPM free area velocity.

CATALOG NO. 458DD

Rev: JULY 2010

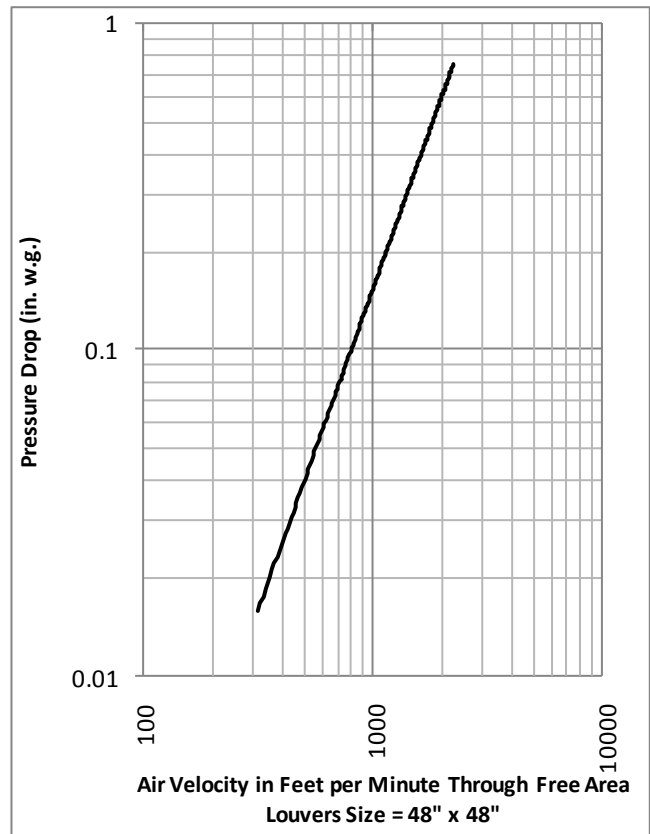
MODEL 458DD

Free Area in Square Feet And Square Meters

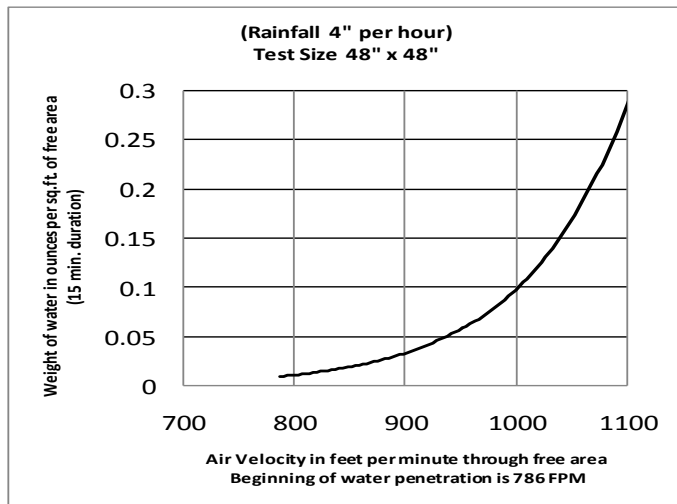
Free Area for openings up to 72" X 120".
For free area data for larger openings, contact factory.

FREE AREA IN SQUARE FEET AND SQUARE METERS						
3048. mm	0.526	1.126	1.726	2.327	2.926	3.527
120"	5.660	12.122	18.584	25.046	31.508	37.97
2743.2 mm	0.471	1.009	1.547	2.085	2.622	3.161
108"	5.072	10.863	16.654	22.446	28.237	34.028
2438.4 mm	0.417	0.892	1.368	1.843	2.318	2.795
96"	4.484	9.605	14.725	19.845	24.965	30.086
2133.6 mm	0.362	0.775	1.189	1.602	2.015	2.428
84"	3.897	8.346	12.795	17.245	21.694	26.143
1828.8 mm	0.307	0.658	1.009	1.360	1.711	2.062
72"	3.309	7.087	10.866	14.644	18.423	22.201
1524. mm	0.253	0.541	0.830	1.119	1.407	1.696
60"	2.721	5.829	8.936	12.044	15.151	18.259
1219.2 mm	0.198	0.424	0.651	0.877	1.103	1.330
48"	2.133	4.570	7.007	9.443	11.880	14.317
914.4 mm	0.143	0.307	0.471	0.635	0.799	0.963
36"	1.546	3.311	5.077	6.843	8.609	10.374
609.6 mm	0.089	0.190	0.292	0.394	0.495	0.597
24"	0.958	2.053	3.148	4.242	5.337	6.432
304.8 mm	0.034	0.073	0.113	0.152	0.192	0.231
12"	0.370	0.794	1.218	1.642	2.066	2.49
H/W	304.8 mm	609.6 mm	914.4 mm	1219.2 mm	1524. mm	1828.8 mm
	12"	24"	36"	48"	60"	72"

Performance Chart



Water Penetration Chart



Ratings do not include the effect of a bird screen.

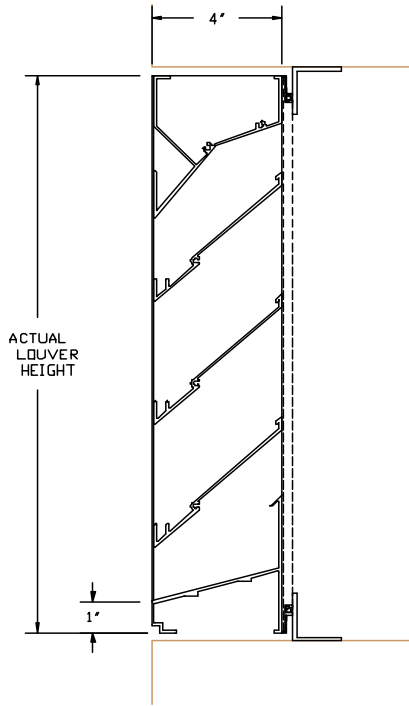
NOTE: All tests are for standard .075 lb./cu. ft.

CATALOG NO. 458DD

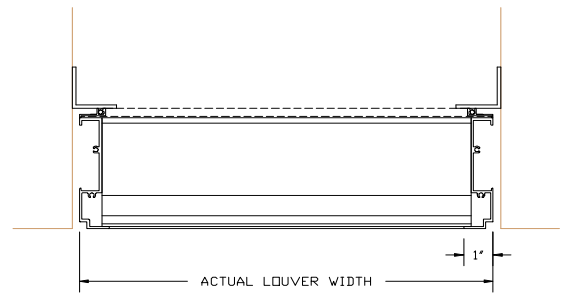
JULY 2010



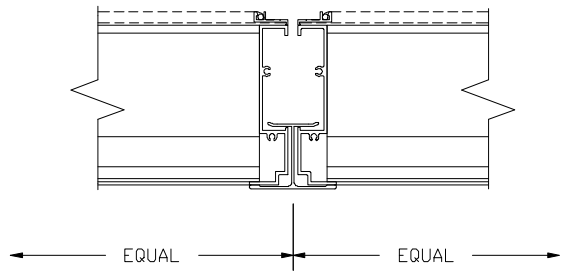
MODEL 458DD



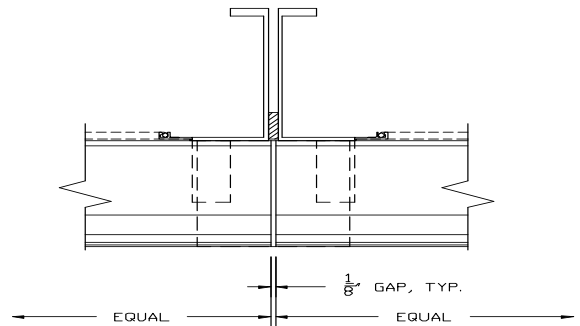
VERTICAL SECTION



HORIZONTAL SECTION



VISIBLE MULLION DETAIL



INVISIBLE MULLION DETAIL

ACCESSORIES:

- SILL FLASHING - DEPTH _____
- SCREEN _____
- FINISH _____
- COLOR _____
- OTHER _____

ITEM NO.	QTY	SIZE		M.O.	MULLION TYPE	NO. OF SECTIONS	REMARKS
		Actual	Width				
		<input type="checkbox"/>		<input type="checkbox"/>			

PROJECT _____	REPRESENTATIVE _____
LOCATION _____	ILI JOB NO. _____ REP NO. _____
ARCH/ENGR. _____	Industrial Louvers, Inc. Phone: 763-972-2981
CONTRACTOR _____	511 South 7th Street Fax: 763-972-2911
DATE _____	Delano, MN 55328
	CATALOG NO. 458DD
	JULY 2010