

10 71 13/IND
BuyLine 2902

2009



**INDUSTRIAL
LOUVERS Inc.**

Sun Control Devices

Custom Aluminum Fabrication of

Horizontal & Vertical Sunshades • Lightselves • Trellises

FOR COMPLETE
INFORMATION
VISIT OUR WEBSITE

IndustrialLouvers.com

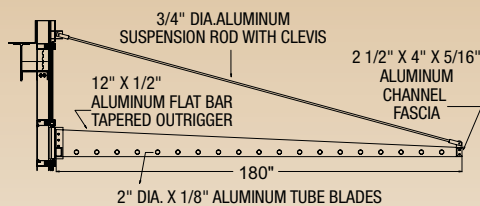


**INDUSTRIAL
LOUVERS Inc.**

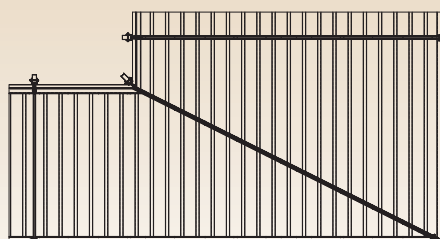


**Lear Corporation
Plymouth, MI**

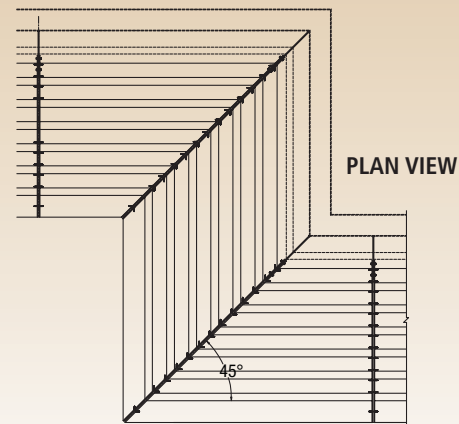
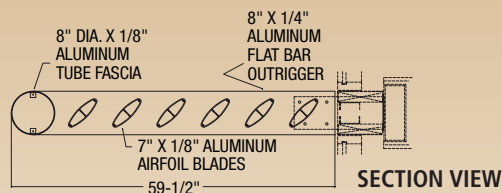
SECTION VIEW



PLAN VIEW



**CH Robinson
Eden Prairie, MN**



Custom Sunshades

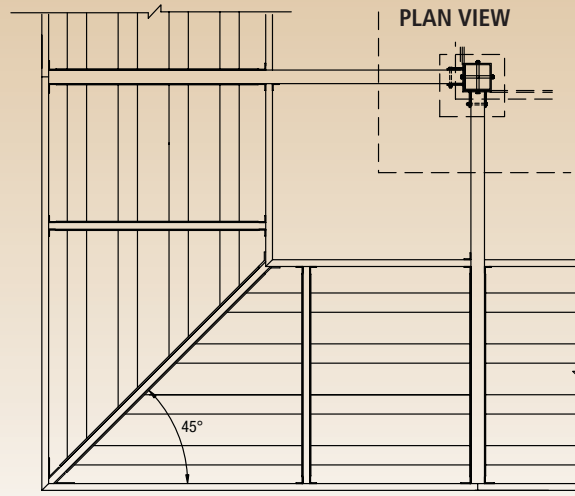
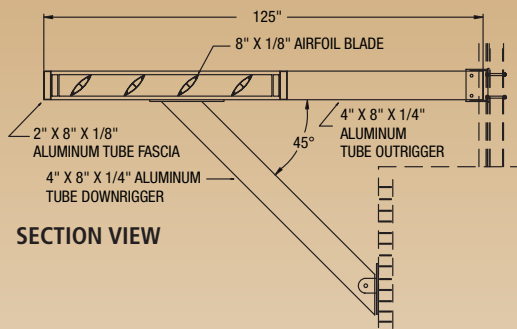
COVER: Teel Plastics, Baraboo, WI
Johns Creek MOB, Lithia Springs, GA



**INDUSTRIAL
LOUVERS Inc.**



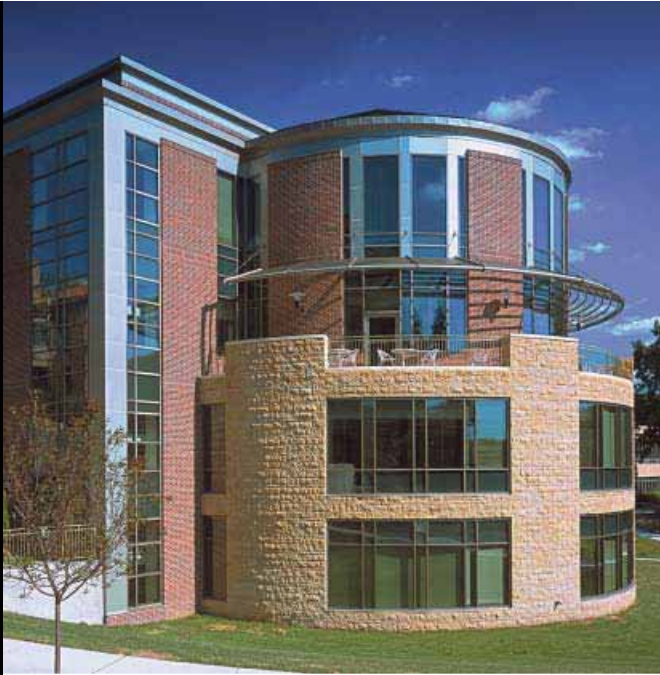
**Johns Creek MOB
Lithia Springs, GA**



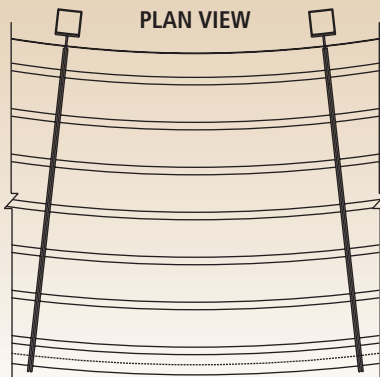
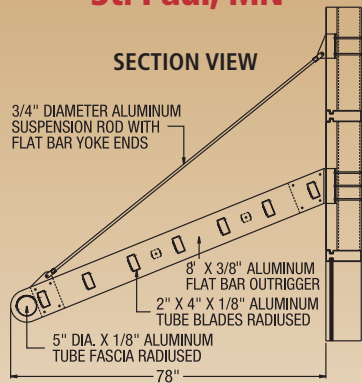
Aesthetics • Form • Function



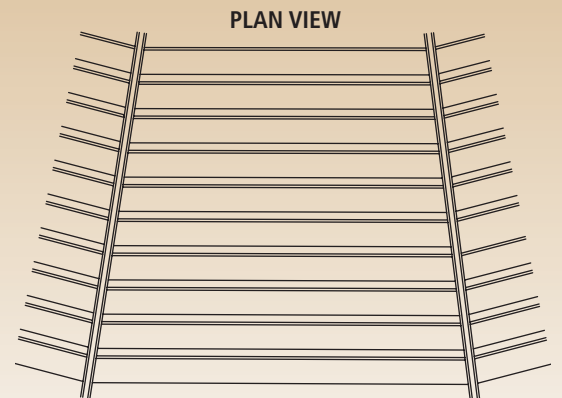
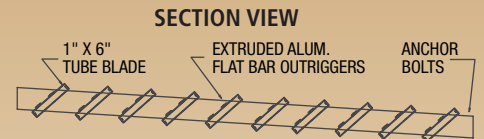
**INDUSTRIAL
LOUVERS Inc.**



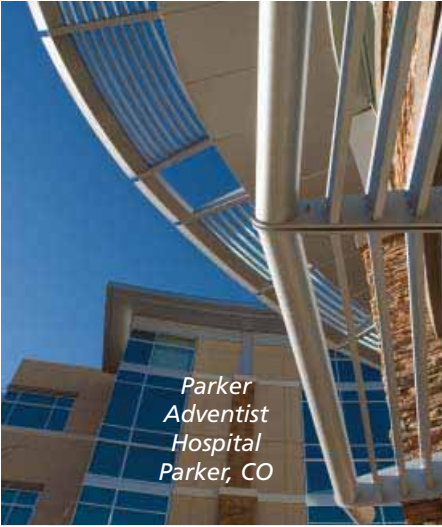
**St. Catherine's College
St. Paul, MN**



**Big Bend Community College
Moses Lake, WA**



Custom Sunshades



*Parker
Adventist
Hospital
Parker, CO*



*Horn Memorial
Hospital,
Ida Grove, IA*



*Citadel
Business Park,
Commerce, CA*

10 71 13/IND
BuyLine 2902



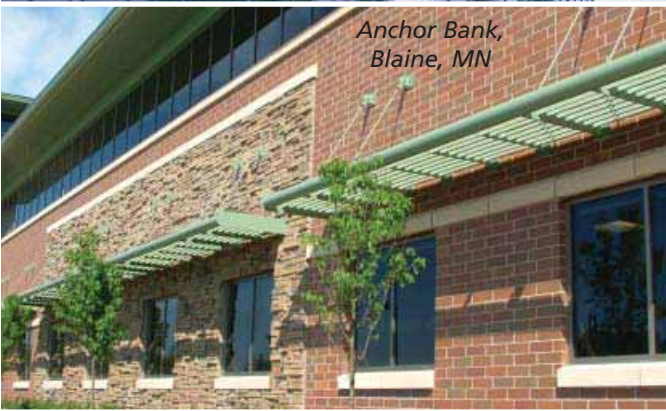
**INDUSTRIAL
LOUVERS Inc.**



*Rack Room Shoes,
Charlotte, NC*



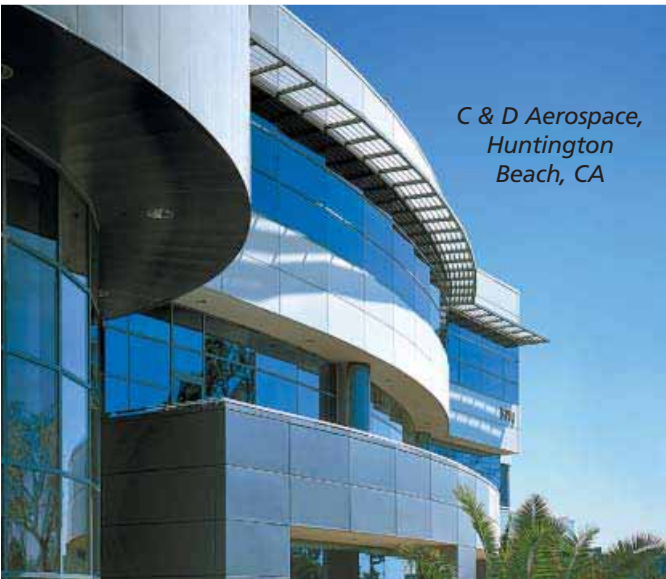
*Children's Hospital of
The King's Daughters,
Newport News, VA*



*Anchor Bank,
Blaine, MN*



*Simmons College,
Boston, MA*



*C & D Aerospace,
Huntington
Beach, CA*



*Inova Heart Institute
Falls Church, VA*

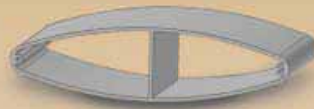
Sunshade Gallery

Blade Profiles

The blade profiles shown below are standard extruded aluminum profiles supplied by ILI. ILI can also create custom blade shapes and sizes for your specific project requirements.



Curved Blade
6" to 10"



Airfoil Blade
3" to 9.5"



Large 3 piece Airfoil Blade
10" to 18"



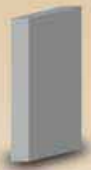
Channel
2" to 8"



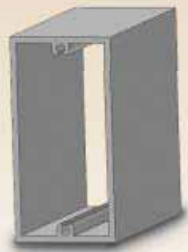
Circular Tube
1" to 8"



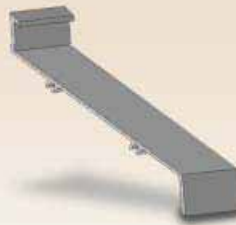
Square Tube
2" to 4"



Rectangular Flat Bar
2" to 12"



Rectangular Tube
2" to 12"



Standard Blade
4", 6"



RT Profile
4"

Visit www.IndustrialLouvers.com for a Complete List of Parts and Capabilities

Fascia Profiles

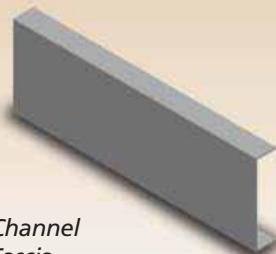
The fascia element adds the finishing touch to your custom designed sunshade. Below are four typical profiles commonly used.



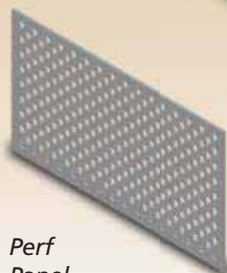
Round Fascia



Bullnose Fascia



Channel Fascia



Perf Panel

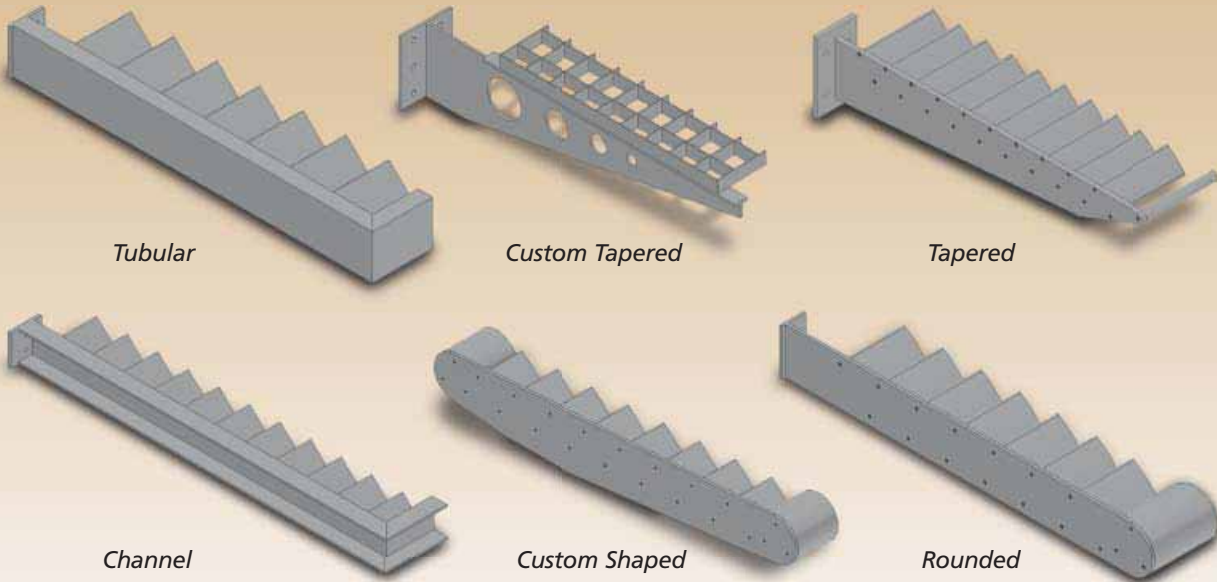
Suspension Rod

Suspension rods may be required in certain cases to assist in supporting the sunshade or they may be added simply as an aesthetic feature.



Outrigger Profiles

The following is just a sampling of typical outrigger profiles available from ILI. Other custom shaped outriggers made from aluminum sheet or flat bar are readily available in a wide variety of shapes and sizes.



Tubular

Custom Tapered

Tapered

Channel

Custom Shaped

Rounded

10 71 13/IND
BuyLine 2902

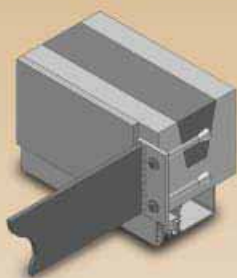


**INDUSTRIAL
LOUVERS Inc.**

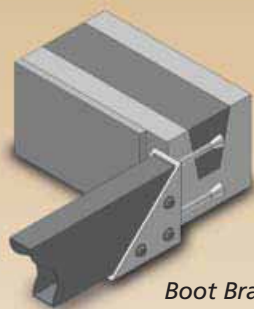
Visit www.industrialLouvers.com for a Complete List of Parts and Capabilities

Mounting Options

Certain design criteria must be considered when mounting sunshades to buildings such as wind and snow loads, local building codes and type of substrate the sunshade is connecting to. Below are some of the more common mounting options available.



*Back Plate
Anchored to
Concrete*



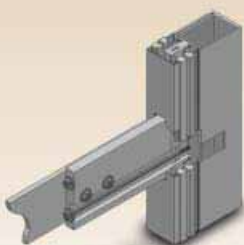
*Boot Bracket
Anchored to
Concrete*



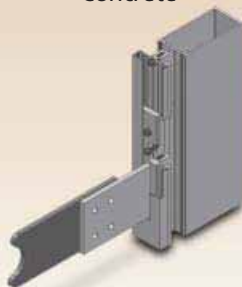
*Back Plate
Bolted to
I-beam*



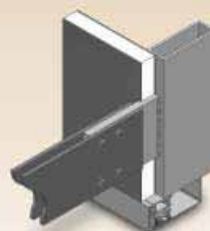
*Back Plate Thru-Bolted
Through Reinforced
Concrete Block*



*Curtain
Wall Plate*



*Curtain Wall
"T" Bracket*



*Steel
Plate
Welded
to Steel
Tube*

Outrigger Profiles — Mounting Options

Teel Plastics
Baraboo, WI



511 South 7th Street
Delano, MN 55328
Phone (763) 972-2981
Fax (763) 972-2911
www.industriallouvers.com
ilinfo@industriallouvers.com

800-328-3421

About Finishing at Industrial Louvers...

Our in-house painting facility, Industrial Finishing, Inc., is solely dedicated to serving Industrial Louvers finishing needs. This arrangement allows for less material handling, thus minimizing the chance for damaging product during the finishing process. ILI offers a wide variety of standard, exotic and custom mixed colors for you to choose from.

**KYNAR® 500
HYLAR® 5000
ANODIC FINISHES**



For further information on ILI's finishing capabilities, call (763) 972-2981 and ask for the "Finish Guide"