



Pilkington **Optifloat™** Opal - Acid-Etched

Pilkington **Optifloat™** Opal offers all the diffused natural light of a translucent glass, but with none of the drawbacks. An acid-etched product suitable for internal or external use, it creates an attractive finish for windows, partition walls, glass doors, furniture, shelving, wall cladding and many more applications.

It can be stored and processed in the same way as standard float glass, is readily available in different thicknesses, and can be easily toughened, laminated or screen-printed making Pilkington **Optifloat™** Opal the ideal choice.

Features and Benefits

- Acid etched glass
- High light transmittance
- Diffuses light to give a uniform natural look
- “Velvet smooth” and durable surface
- Improved design flexibility
- Can be used internally and externally
- Temperable
- Fabricator Friendly
- Doesn't leave fingerprint residue

Applications

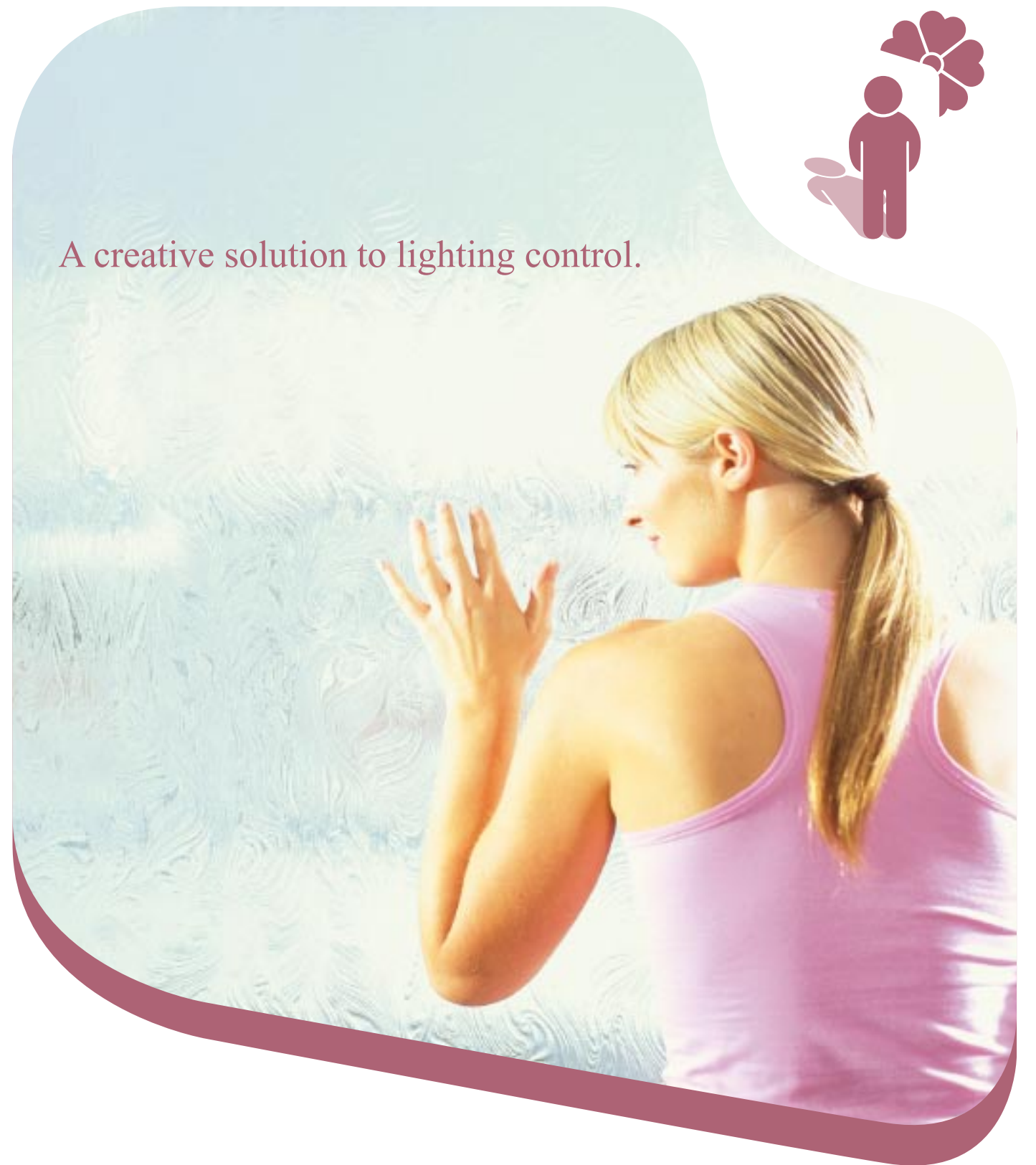
- Windows
- Partition walls
- Glass doors
- Kitchen Cabinets
- Doors
- Shelves and cabinets
- Working surfaces
- Balustrades
- Shower Doors



PILKINGTON
NSG Group Flat Glass Business

Pilkington Building Products North America
811 Madison Ave., Toledo, OH 43697-0799

Domestic Sales: 800 221 0444 International Sales: 419 247 4890 Main Office: 419 247 3731 Fax: 419 247 4517
E-mail: building.products@us.pilkington.com Web site: www.pilkington.com



A creative solution to lighting control.



Pilkington **Texture™** Glass
Pilkington **Optifloat™** Opal Glass



PILKINGTON
NSG Group Flat Glass Business

Pilkington Texture™ Glass

Pilkington Texture™ Glass comprises a range of textured styles and visual effects providing opportunities for modern design or the faithful re-creation of decor from a by-gone era. It is suitable for windows and interiors.

Description

Pilkington Texture™ Glass is manufactured by passing a continuous molten glass ribbon between two rollers, one of which has a pattern that creates a permanent impression.

Pilkington Texture™ glass has all the attributes of glass – durability, ease of cleaning and resistance to scratching and marking. It is stocked by most distributors and is a low-cost decorative option.

Privacy with Translucency

Privacy is an important design consideration. Pilkington Texture™ Glass is appropriate for areas requiring obscuration and privacy and for areas where privacy from overlooking is required, without sacrificing any natural light. Pilkington Texture™ Glass provides degrees of privacy through light diffusion and obscuration.

For privacy, pure style or to allow more light into internal rooms, decorative glass gives you a whole range of attractive options. In fact, Pilkington offers more than 20 different patterns from classic to modern to choose from.

The advantages of Pilkington decorative glass are easy to see; it allows maximum light while maintaining privacy or obscuring unattractive views, and also forms an attractive decorative feature itself.

Features and Benefits

- Contemporary range - stocked for ease of availability
- Available in stock sizes and heavy thicknesses *
- Economical method of providing permanent privacy and decoration.
- Diffused daylight
- Unique visual effects
- Design
- Available in a range of thickness
- High light transmission
- Temperable

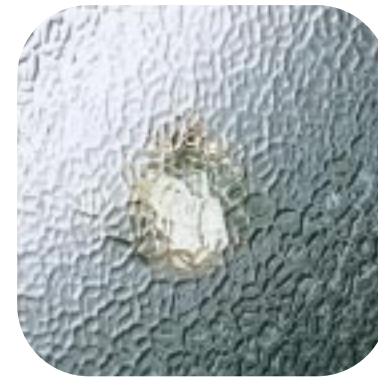
Applications

- Windows for privacy and decoration
- Shower and bath enclosures
- Interior partitions
- Door inserts
- Wall panels and wall features
- Lead lighting
- Furniture
- Backsplashes
- Exterior glazing
- Kitchen Cabinets

Technical information

However you use Pilkington glass it is essential for safety and performance reasons that it is correctly specified and installed. We recommend safety glass for these common applications of impact risk:

- Glazed doors
- Glazing adjacent to doors
- Low level glazing
- Bathroom areas
- Protective barriers
- Furniture and cabinets



Arctic™



Contora™



Flemish™



Oak™



Sycamore™



Morisco™



Autumn™



Cotswold™



Florielle™



Pelerine™



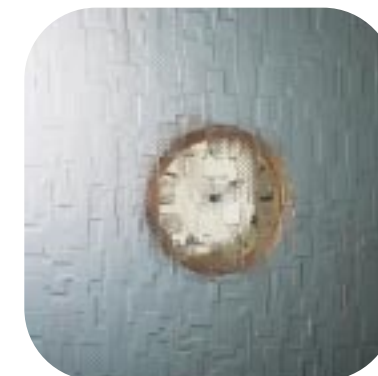
Taffeta™



Rayado™



Chantilly™



Digital™



Mayflower™



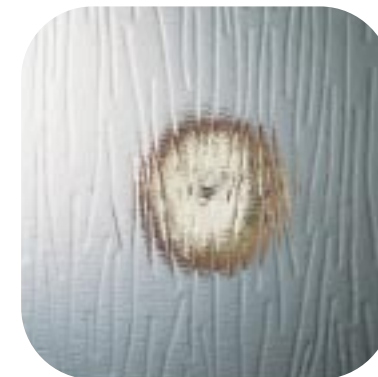
Reeded™



Warwick™



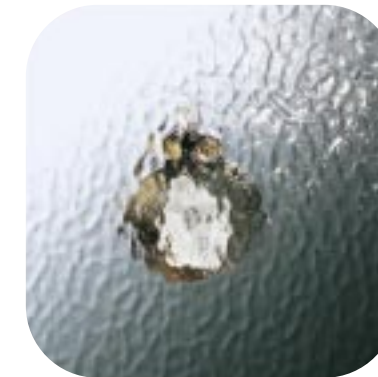
Sparkel™



Charcoal Sticks™



Everglade™



Minster™



Stippolyte™



Austral™



Yacare™



* Contact a Pilkington representative for available stock size and thicknesses 800 221 0444.