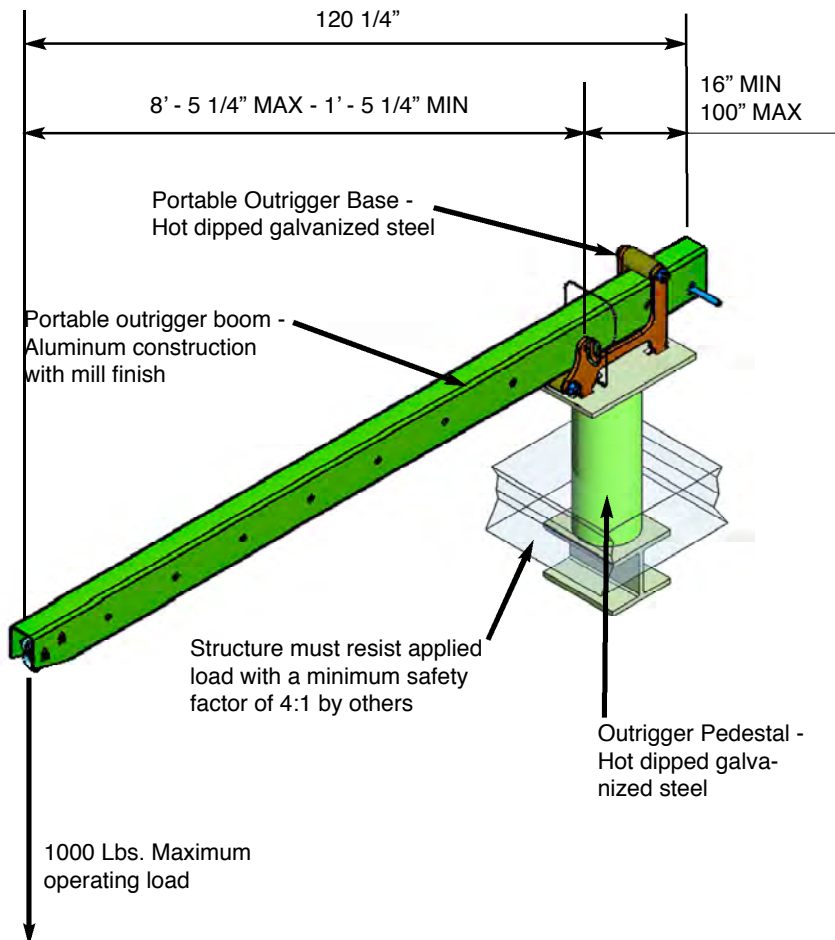


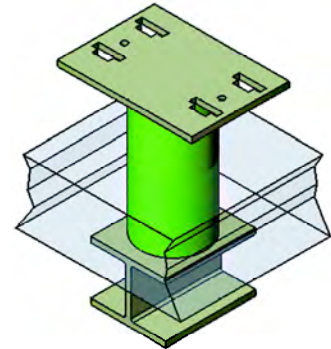
Description

Push-out outrigger arms can be used as an alternative to traditional davit systems. Used primarily at high parapet, screenwalls, mansard roofs, etc.

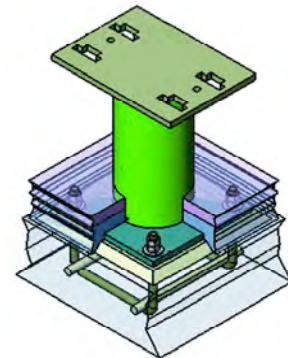
They are for use with ground-rigged stage/work cage platforms. the ground area must be clear and free of obstructions to permit stage/work cage rigging.



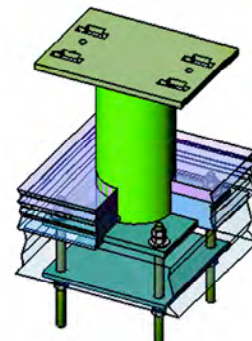
Standard Connections



Weld to Steel



Embedded Anchor

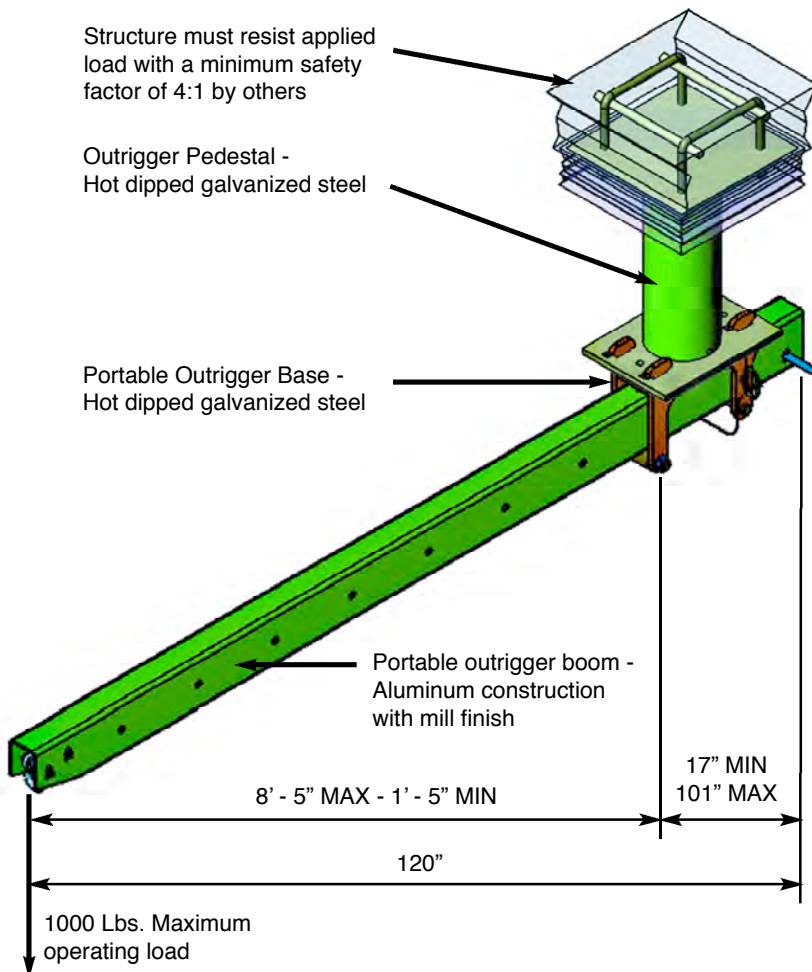


Thru Bolt

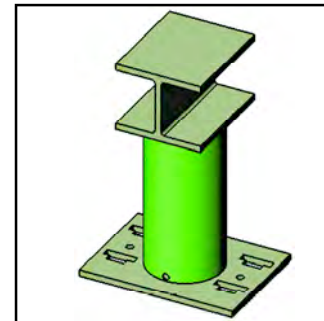
Description

Push-out outrigger arms can be used as an alternative to traditional davit systems. Used primarily at high parapet, screenwalls, mansard roofs, etc.

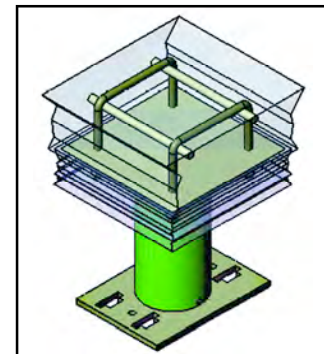
They are for use with ground-rigged stage/work cage platforms. the ground area must be clear and free of obstructions to permit stage/work cage rigging.



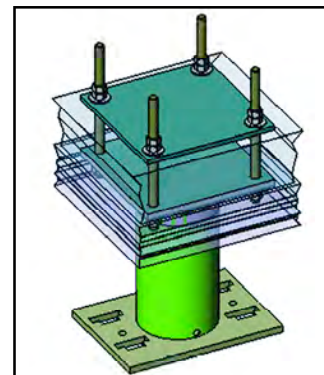
Standard Connections



Weld to Steel



Embedded Anchor



Thru Bolt