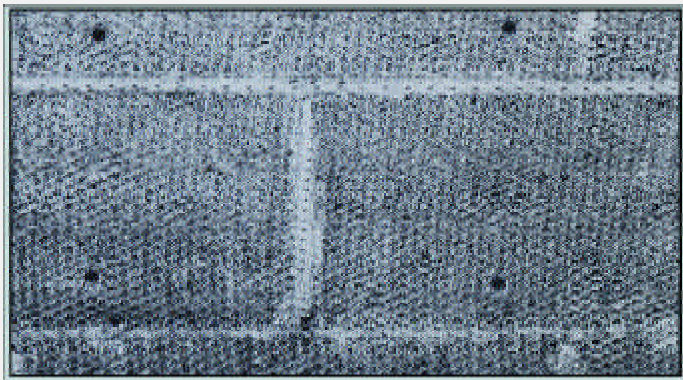
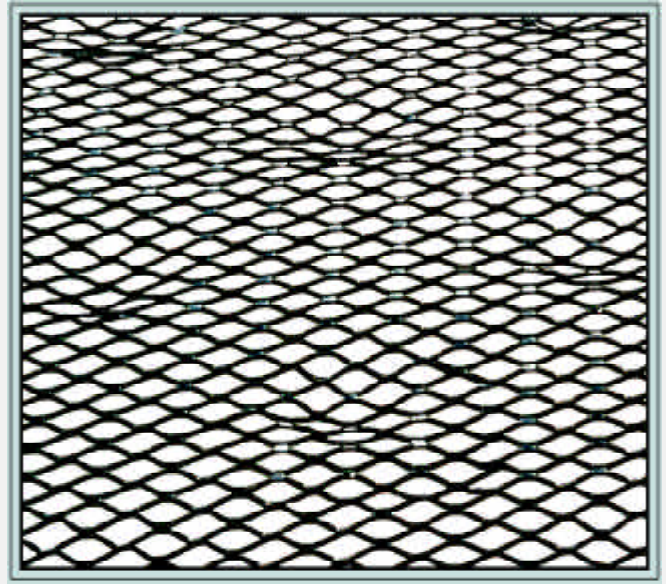


Self-Furring Metal Lath

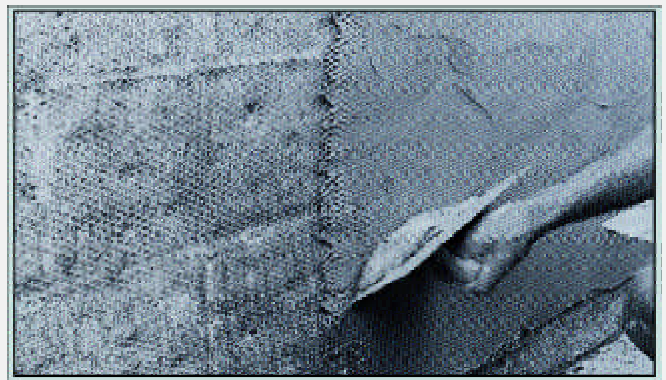
SELF-FURRED DIAMOND MESH LATH

Codes require metal lath used over solid surfaces to be furred approximately ¼ inch away from the wall to allow for the proper stucco keying behind the lath. Self-furred diamond mesh lath has a surface studded in dimples or embossed "V" groove that provide the required ¼ inch of furring. Fastener placement should be arranged so as not to negate the furring mechanism.

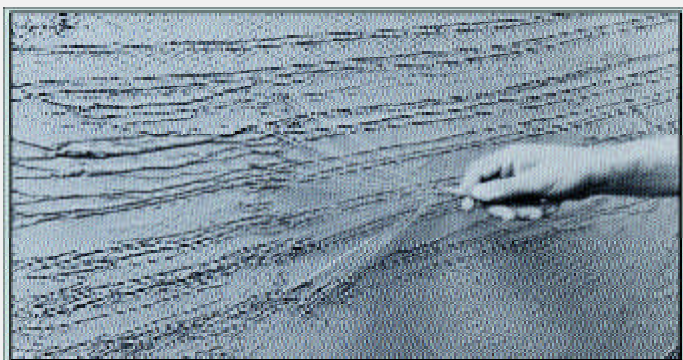
Self-Furred Diamond Mesh Lath Weight per Square Yard				
Type	Finish	Sheet Size	Pieces per Bundle	Square Yards per Bundle
1.75 lbs.	Galvanized	27" x 96"	10	20
2.5 lbs.	Galvanized	27" x 96"	10	20
3.4 lbs.	Galvanized	27" x 96"	10	20
25 Bundles per pallet equals 500 square yards				



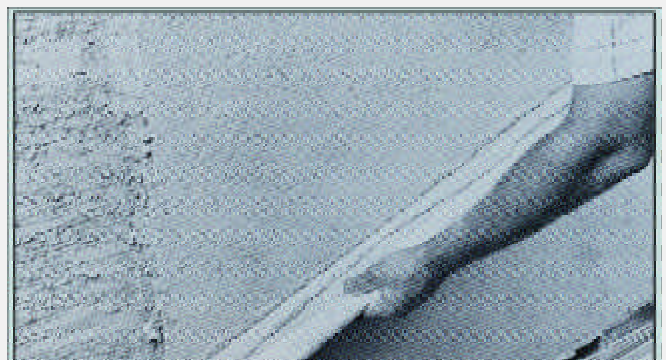
Self-Furred Diamond Mesh Lath is secured to masonry surfaces with hardened concrete nails and power driven fasteners at the furring dimples. Paper backed lath is often used in this type of application as a bond breaker .



The scratch coat is applied with complete embedment of the self-furred lath in the plaster.



"Scratching" the scratch coat for maximum bonding of brown coat to the scratch coat.



"Darbying" the brown coat to render a plumb and even surface.

Refer to ASTM C1063 for support spacing, lath selection, fastener selection and further information regarding the proper installation of metal lath. ASTM and most codes require hot dipped galvanized lath for all exterior applications. AMICO recommends the use of zinc or vinyl beads for all exterior applications.