

Stair Treads

Manufactured to match the full line of our grating, there is an AMICO-Klemp® stair tread to meet your needs. AMICO-Klemp® stair treads are safe, self-cleaning, skid-resistant and economical. Steel and aluminum stair treads are available in a variety of styles: welded, riveted, press-locked, swage-locked and Duo-Grip™ extruded aluminum.

Welded steel stair treads are the most widely used for their strength and ease of installation and are universally used in most industrial and commercial applications. **Riveted steel stair treads** have a greater load carrying capacity for the same span and depth of bearing bar and greater walking comfort. Both can be ordered with a serrated surface for additional safety.

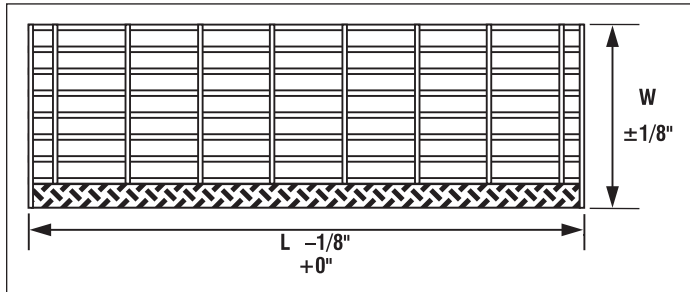
Aluminum stair treads, due to their light weight, high strength, corrosion resistance, rust proof and non-sparking properties, are ideally suited for corrosive environments, food preparation and storage areas, and volatile areas. **Swage-locked I-bar stair treads** offer you high strength at

less weight and lower cost. **Rectangular bar, press-locked or swage-locked, stair treads** provide a higher strength and stiffness-to-weight ratio and are available with a serrated surface when additional safety is required. Our **Duo-Grip™ plank stair treads** give you an exceptional strength and stiffness-to-weight ratio.

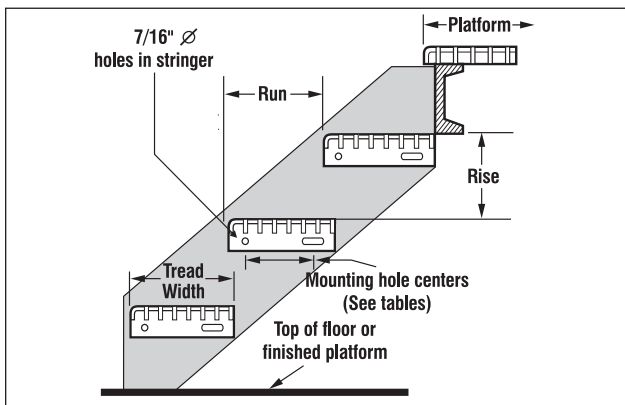
All stair treads are custom fabricated to meet the size, width and length specifications of a particular job. In addition, standard end plates can be custom fabricated to meet special bolt hole size or location requirements.

Both steel and aluminum nosings are available to add strength at the point of greatest impact and provide a definitive visible edge for extra safety. Choose our checkered plate nosing for normal use. For additional safety, choose our cast aluminum abrasive nosings or our corrugated aluminum nosings, or dimple nosing available in carbon stainless or aluminum.

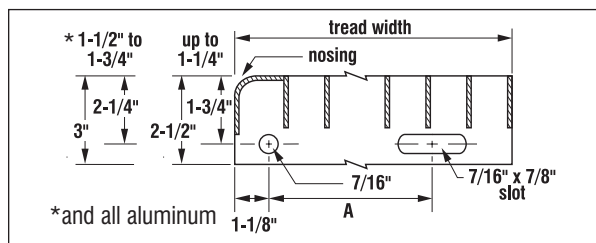
STAIR TREAD TOLERANCES AND DETAILS



Tread Length and Width Tolerance

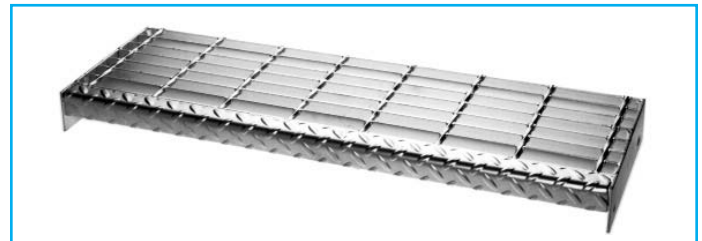


Typical Stair Tread Stringer Detail

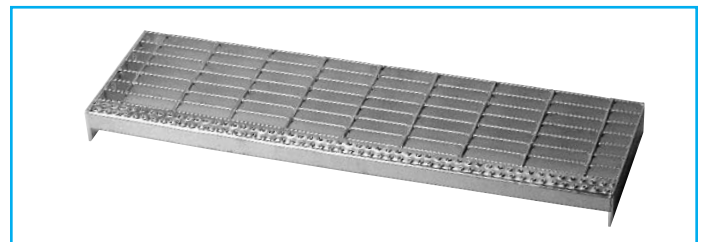


Typical Tread Dimensions

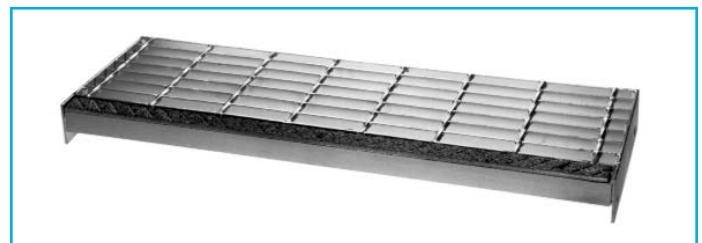
STEEL/WELDED & PRESS-LOCKED



Welded (W)
Checkered Plate Nosing (CP)



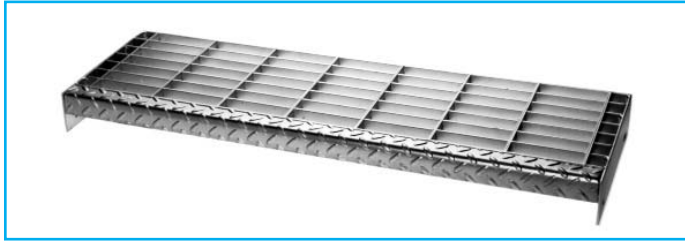
Welded (W)
Dimple Plate Nosing (DP)



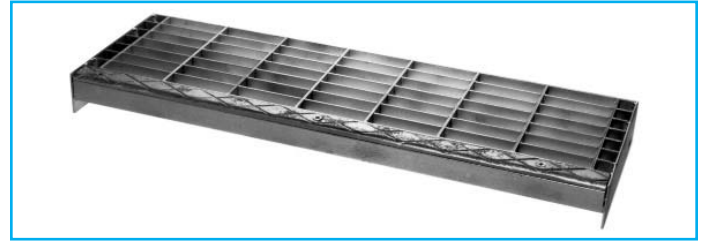
Welded (W)
Cast Aluminum (CAA) Abrasive Nosing

Stair Treads

STEEL/WELDED & PRESS-LOCKED



Press-Locked (P)
Checkered Plate Nosing (CP)



Press-Locked (P)
Cast Aluminum (CAA) Abrasive Nosing

MAXIMUM TREAD LENGTHS

Bearing Bar Size	Bearing Bar Spacing			
	1-3/16" (19 space)		15/16" (15 space)	
	Plain	Serrated	Plain	Serrated
3/4" x 3/16"	2'-4"	1'-11"	2'-8"	2'-2"
1" x 1/8"	2'-7"	2'-3"	3'-0"	2'-6"
1" x 3/16"	3'-5"	2'-10"	4'-0"	3'-4"
1-1/4" x 1/8"	3'-7"	3'-1"	4'-2"	3'-7"
1-1/4" x 3/16"	4'-8"	4'-2"	5'-1"	4'-6"
1-1/2" x 3/16"	5'-6"	5'-3"	5'-6"	5'-6"

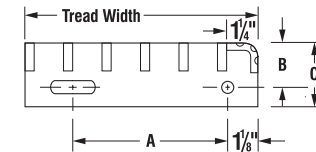
When tread length exceeds 5'-6", design tread for 300 lb concentrated loads at 1/3 points. Maximum tread length based on 300 lb concentrated load on front 5 in of tread at center of tread length and deflection limitation of 1/240 of length.

END PLATE DIMENSIONS

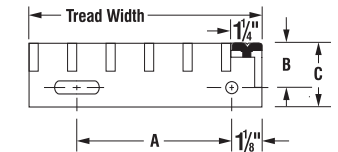
Grating Depth	"B" dimension	"C" dimension
up to 1-1/4"	1-3/4"	2-1/2"
* 1-1/2" to 1-3/4"	2-1/4"	3"

See Tread Width and Bolt Hole Spacing for 'A' dimension.
*and all aluminum

With Checkered Plate Nosing



With Cast Aluminum Abrasive Nosing



TREAD WIDTH AND BOLT HOLE SPACING

No. of Bearing Bars and Nosing	19-W-4 and 19-P-4		**Bolt Hole Spacing "A"
	Bearing Bar		
	1/8"	3/16"	
	Tread Width		
5	6-1/8"	6-3/16"	2-1/2"
6	7-5/16"	7-3/8"	4-1/2"
7	8-1/2"	8-9/16"	4-1/2"
8	9-11/16"	9-3/4"	7"
9	10-7/8"	10-15/16"	7"
10	12-1/16"	12-1/8"	7"

**See drawing above.
NOTE: Weights are for Welded only. Call for Press-Locked Weights.

No. of Bearing Bars and Nosing	15-W-4 and 15-P-4		**Bolt Hole Spacing "A"
	Bearing Bar		
	1/8"	3/16"	
	Tread Width		
6	6-1/16"	6-1/8"	2-1/2"
7	7"	7-1/16"	4-1/2"
8	7-15/16"	8"	4-1/2"
9	8-7/8"	8-15/16"	4-1/2"
10	9-13/16"	9-7/8"	7"
11	10-3/4"	10-13/16"	7"

**See drawing above.

STAIR TREAD WEIGHTS (per lineal inch of tread length)

19-W-4		Bearing Bar Size					
No. of Bearing Bars	Nosing	1" x 1/8"		1" x 3/16"		1-1/4" x 3/16"	
		1/8"	1/8"	3/16"	3/16"	3/16"	3/16"
5	CP/DP	.30	.35	.33	.39	.46	.55
	CAA	.34	.38	.36	.43	.49	.59
6	CP/DP	.35	.40	.38	.46	.53	.65
	CAA	.38	.44	.41	.49	.57	.68
7	CP/DP	.39	.45	.43	.52	.61	.74
	CAA	.43	.49	.46	.56	.65	.77
8	CP/DP	.44	.51	.48	.53	.69	.84
	CAA	.48	.54	.51	.62	.72	.87
9	CP/DP	.48	.56	.53	.64	.76	.93
	CAA	.52	.60	.56	.68	.80	.97
10	CP/DP	.53	.62	.58	.71	.84	1.02
	CAA	.56	.65	.61	.74	.88	1.06

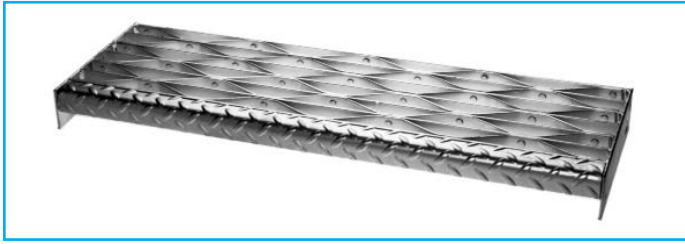
15-W-4		Bearing Bar Size					
No. of Bearing Bars	Nosing	1" x 1/8"		1" x 3/16"		1-1/4" x 3/16"	
		1/8"	1/8"	3/16"	3/16"	3/16"	3/16"
6	CP/DP	.34	.39	.36	.44	.53	.63
	CAA	.37	.43	.40	.48	.56	.67
7	CP/DP	.38	.44	.41	.51	.60	.72
	CAA	.42	.58	.45	.54	.63	.76
8	CP/DP	.43	.49	.46	.57	.67	.81
	CAA	.46	.53	.49	.60	.71	.85
9	CP/DP	.47	.55	.51	.63	.75	.91
	CAA	.50	.58	.54	.66	.78	.94
10	CP/DP	.51	.60	.55	.69	.82	1.00
	CAA	.55	.63	.59	.73	.86	1.03
11	CP/DP	.55	.65	.60	.75	.89	1.09
	CAA	.59	.69	.64	.79	.93	1.13

CP-Checkered Plate
DP-Dimple Plate
CAA-Cast Aluminum Abrasion

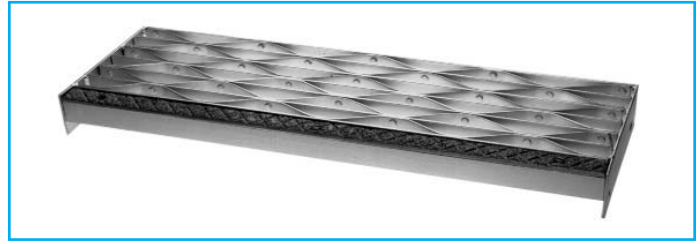


Stair Treads

STEEL/RIVETED



Riveted (R)
Checker Plate Nosing (CP)



Riveted (R)
Cast Aluminum (CAA) Abrasive Nosing

MAXIMUM TREAD LENGTHS

Bearing Bar Size	Bearing Bar Spacing			
	1-1/4" (18 space)		3/4" (12 space)	
	Plain	Serrated	Plain	Serrated
3/4" x 3/16"	2'-0"	1'-5"	2'-8"	1'-9"
1" x 1/8"	2'-7"	1'-11"	3'-0"	2'-1"
1" x 3/16"	2'-10"	2'-0"	4'-0"	2'-8"
1-1/4" x 1/8"	3'-7"	2'-7"	4'-2"	3'-0"
1-1/4" x 3/16"	3'-10"	2'-10"	5'-1"	4'-0"
1-1/2" x 3/16"	5'-2"	3'-10"	5'-6"	5'-1"

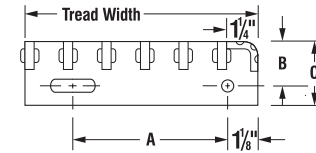
When tread length exceeds 5'-6", design tread for 300 lb concentrated loads at 1/3 points. Maximum tread length based on 300 lb concentrated load on front 5 in of tread at center of tread length and deflection limitation of 1/240 of length. Maximum lengths for serrated apply only if bearing bars are serrated.

END PLATE DIMENSIONS

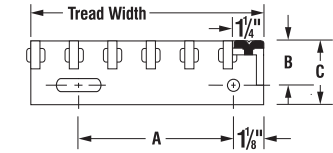
Grating Depth	"B" dimension	"C" dimension
up to 1-1/4"	1-3/4"	2-1/2"
*1-1/2" to 1-3/4"	2-1/4"	3"

See Tread Width and Bolt Hole Spacing for "A" dimension.
*and all aluminum

With Checker Plate Nosing



With Cast Aluminum Abrasive Nosing



TREAD WIDTH AND BOLT HOLE SPACING

18-R-7			
No. of Bearing Bars and Nosing	Bearing Bar		**Bolt Hole Spacing "A"
	1/8"	3/16"	
	Tread Width		
5	6-3/8"	6-11/16"	2-1/2"
6	7-5/8"	8"	4-1/2"
7	8-7/8"	9-5/16"	4-1/2"
8	10-1/8"	10-5/8"	7"
9	11-3/8"	11-15/16"	7"
10	12-5/8"	13-1/4"	7"

**See drawing above.

12-R-7			
No. of Bearing Bars and Nosing	Bearing Bar		**Bolt Hole Spacing "A"
	1/8"	3/16"	
	Tread Width		
6	5-3/4"	6-1/8"	2-1/2"
7	6-5/8"	7-1/16"	4-1/2"
8	7-1/2"	8"	4-1/2"
9	8-3/8"	8-15/16"	4-1/2"
10	9-1/4"	9-7/8"	7"
11	10-1/8"	10-13/16"	7"

**See drawing above.

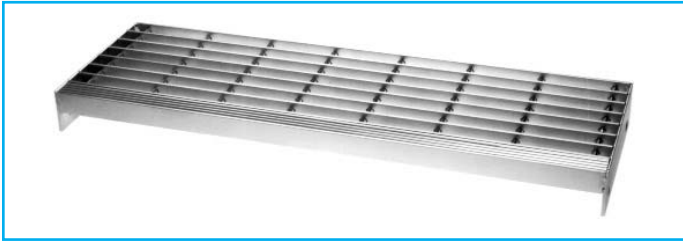
STAIR TREAD WEIGHTS (per lineal inch of tread length)

18-R-7							
No. of Bearing Bars	Nosing	Bearing Bar Size					
		1" x 1/8"	1-1/4" x 1/8"	3/4" x 3/16"	1" x 3/16"	1-1/4" x 3/16"	1-1/2" x 3/16"
5	CP	.38	.41	.42	.48	.54	.59
	CAA	.43	.43	.49	.53	.58	.64
6	CP	.45	.49	.49	.57	.64	.71
	CAA	.50	.54	.57	.62	.69	.76
7	CP	.53	.57	.57	.66	.75	.84
	CAA	.58	.62	.65	.71	.80	.89
8	CP	.60	.65	.65	.75	.85	.96
	CAA	.65	.70	.74	.80	.90	1.01
9	CP	.67	.72	.73	.85	.96	1.08
	CAA	.72	.77	.83	.90	1.01	1.13
10	CP	.74	.80	.81	.94	1.07	1.20
	CAA	.79	.85	.90	.99	1.12	1.25

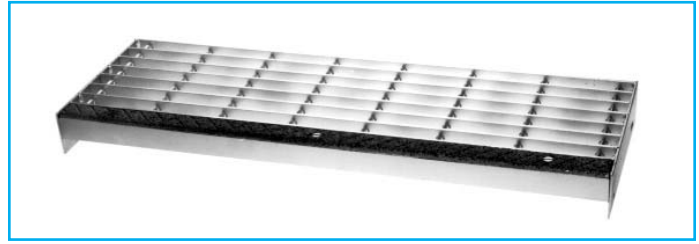
12-R-7							
No. of Bearing Bars	Nosing	Bearing Bar Size					
		1" x 1/8"	1-1/4" x 1/8"	3/4" x 3/16"	1" x 3/16"	1-1/4" x 3/16"	1-1/2" x 3/16"
6	CP	.45	.49	.47	.55	.61	.68
	CAA	.50	.54	.52	.60	.66	.73
7	CP	.52	.57	.59	.63	.71	.80
	CAA	.56	.62	.59	.68	.76	.84
8	CP	.58	.64	.62	.72	.81	.91
	CAA	.63	.69	.67	.77	.86	.96
9	CP	.65	.72	.69	.81	.91	1.02
	CAA	.70	.77	.74	.86	.96	1.03
10	CP	.72	.80	.77	.90	1.01	1.14
	CAA	.77	.85	.81	.94	1.04	1.19
11	CP	.79	.88	.84	.98	1.11	1.25
	CAA	.84	.92	.89	1.03	1.16	1.30

Stair Treads

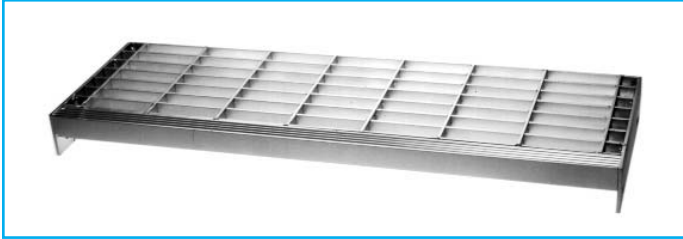
ALUMINUM/RECTANGULAR BAR SWAGE-LOCKED & PRESS-LOCKED



Swage-Locked (SR)
Corrugated Aluminum Nosing (CORR)



Swage-Locked (SR)
Cast Aluminum Abrasive Nosing (CAA)



Press-Locked (AP)
Corrugated Aluminum Nosing (CORR)



Press-Locked (AP)
Cast Aluminum Abrasive Nosing (CAA)

MAXIMUM TREAD LENGTHS

Bearing Bar Size	Bearing Bar Spacing			
	1-3/16" (19 space)		15/16" (15 space)	
	Plain	Serrated	Plain	Serrated
1" x 3/16"	2'-4"	2'-2"	2'-6"	2'-3"
1-1/4" x 3/16"	2'-10"	2'-7"	3'-1"	2'-9"
1-1/2" x 3/16"	3'-6"	3'-2"	3'-10"	3'-5"
1-3/4" x 3/16"	4'-3"	3'-10"	4'-8"	4'-3"

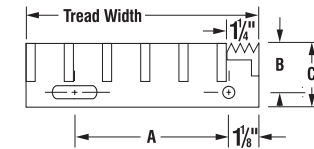
When tread length exceeds 5'-6", design tread for 300 lb concentrated loads at 1/3 points. Maximum tread length based on 300 lb concentrated load on front 5 in of tread at center of tread length and deflection limitation of 1/240 of length.

END PLATE DIMENSIONS

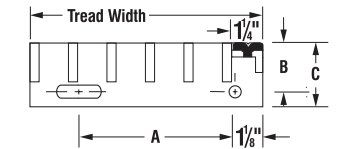
Grating Depth	"B" dimension	"C" dimension
up to 1-1/4"	1-3/4"	2-1/2"
*1-1/2" to 1-3/4"	2-1/4"	3"

See Tread Width and Bolt Hole Spacing for "A" dimension.
*and all aluminum

With Corrugated Aluminum Nosing



With Cast Aluminum Abrasive Nosing



TREAD WIDTH & BOLT HOLE SPACING

19-SR-4 and 19-AP-4		
No. of Bearing Bars and Nosing	Bearing Bar	**Bolt Hole Spacing "A"
	3/16" Tread Width	
5	6-3/16"	2-1/2"
6	7-3/8"	4-1/2"
7	8-9/16"	4-1/2"
8	9-3/4"	7"
9	10-15/16"	7"
10	12-1/8"	7"

**See drawing above.

15-SR-4 and 15-AP-4		
No. of Bearing Bars and Nosing	Bearing Bar	**Bolt Hole Spacing "A"
	3/16" Tread Width	
6	6-1/8"	2-1/2"
7	7-1/16"	4-1/2"
8	8"	4-1/2"
9	8-15/16"	4-1/2"
10	9-7/8"	7"
11	10-13/16"	7"

**See drawing above.

STAIR TREAD WEIGHTS (per lineal inch of tread length)

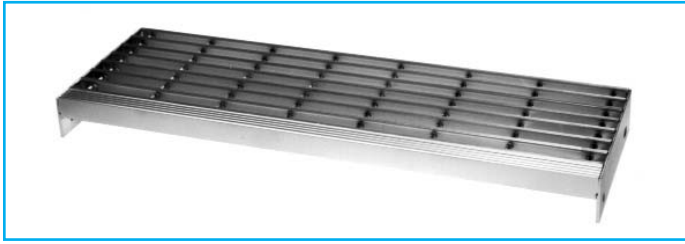
19-SR-4					
No. of Bearing Bars	Nosing	Bearing Bar Size			
		1" x 3/16"	1-1/4" x 3/16"	1-1/2" x 3/16"	1-3/4" x 3/16"
5	CORR	.15	.17	.20	.22
	CAA	.19	.21	.24	.26
6	CORR	.17	.20	.23	.26
	CAA	.21	.23	.27	.30
7	CORR	.19	.23	.27	.30
	CAA	.23	.26	.31	.33
8	CORR	.22	.25	.30	.34
	CAA	.26	.29	.34	.38
9	CORR	.24	.28	.33	.38
	CAA	.28	.32	.37	.41
10	CORR	.26	.31	.37	.41
	CAA	.30	.35	.41	.46

15-SR-4					
No. of Bearing Bars	Nosing	Bearing Bar Size			
		1" x 3/16"	1-1/4" x 3/16"	1-1/2" x 3/16"	1-3/4" x 3/16"
6	CORR	.16	.19	.23	.25
	CAA	.21	.23	.27	.29
7	CORR	.19	.22	.26	.29
	CAA	.23	.26	.30	.33
8	CORR	.21	.24	.29	.33
	CAA	.25	.29	.33	.36
9	CORR	.23	.27	.32	.36
	CAA	.27	.31	.36	.41
10	CORR	.25	.30	.35	.40
	CAA	.29	.34	.39	.44
11	CORR	.28	.33	.39	.44
	CAA	.32	.37	.43	.48

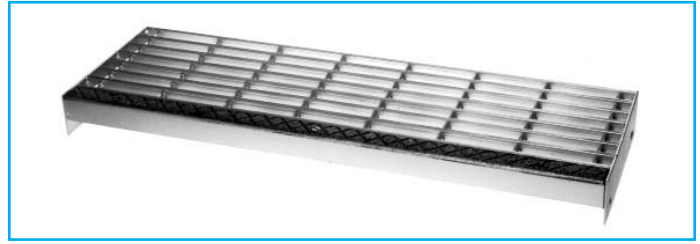
NOTE:
Weights are for Swage-Locked only. Call for Weights on Pressed-Locked.

Stair Treads

ALUMINUM/I-BAR SWAGE-LOCK



Swage-Locked (SI)
Corrugated Aluminum Nosing (CORR)



Swage-Locked (SI)
Cast Aluminum Abrasive Nosing (CAA)

MAXIMUM TREAD LENGTHS

Bearing Bar Size	Bearing Bar Spacing	
	1-3/16" (19 space)	15/16" (15 space)
1" x 1/4"	2'-4"	2'-6"
1-1/4" x 1/4"	2'-10"	3'-1"
1-1/2" x 1/4"	3'-6"	3'-10"
1-3/4" x 1/4"	4'-3"	4'-8"

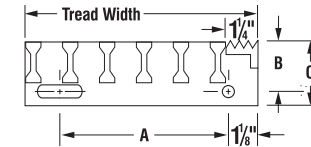
When tread length exceeds 5'-6", design tread for 300 lb concentrated loads at 1/3 points. Maximum tread length based on 300 lb concentrated load on front 5 in of tread at center of tread length and deflection limitation of 1/240 of length.

END PLATE DIMENSIONS

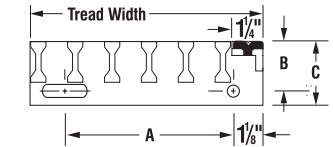
Grating Depth	"B" dimension	"C" dimension
up to 1-1/4"	1-3/4"	2-1/2"
* 1-1/2" to 1-3/4"	2-1/4"	3"

See Tread Width and Bolt Hole Spacing for 'A' dimension.
*and all aluminum

With Corrugated Aluminum Nosing



With Cast Aluminum Abrasive Nosing



TREAD WIDTH & BOLT HOLE SPACING

19-SI-4		
No. of Bearing Bars and Nosing	Bearing Bar	**Bolt Hole Spacing "A"
	1/4" Tread Width	
5	6-1/4"	2-1/2"
6	7-7/16"	4-1/2"
7	8-5/8"	4-1/2"
8	9-13/16"	7"
9	11"	7"
10	12-3/16"	7"

**See drawing above.

15-SI-4		
No. of Bearing Bars and Nosing	Bearing Bar	**Bolt Hole Spacing "A"
	1/4" Tread Width	
6	6-3/16"	2-1/2"
7	7-1/8"	4-1/2"
8	8-1/16"	4-1/2"
9	9"	4-1/2"
10	9-15/16"	7"
11	10-7/8"	7"

**See drawing above.

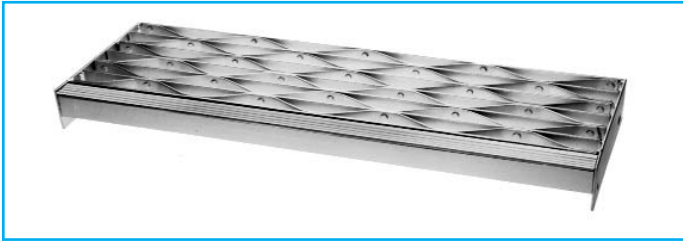
STAIR TREAD WEIGHTS (per lineal inch of tread length)

19-SI-4					
No. of Bearing Bars	Nosing	Bearing Bar Size			
		1" x 1/4"	1-1/4" x 1/4"	1-1/2" x 1/4"	1-3/4" x 1/4"
5	CORR	.13	.14	.16	.18
	CAA	.17	.18	.20	.22
6	CORR	.14	.16	.19	.21
	CAA	.18	.21	.23	.25
7	CORR	.16	.19	.21	.24
	CAA	.20	.23	.25	.28
8	CORR	.18	.21	.24	.26
	CAA	.22	.25	.28	.31
9	CORR	.20	.23	.26	.29
	CAA	.24	.27	.31	.34
10	CORR	.22	.25	.29	.33
	CAA	.26	.29	.33	.36

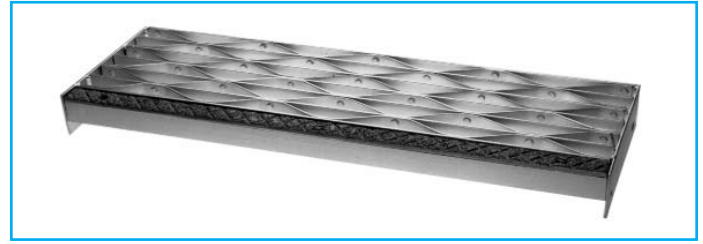
15-SI-4					
No. of Bearing Bars	Nosing	Bearing Bar Size			
		1" x 1/4"	1-1/4" x 1/4"	1-1/2" x 1/4"	1-3/4" x 1/4"
6	CORR	.14	.16	.18	.20
	CAA	.18	.20	.22	.24
7	CORR	.16	.18	.20	.23
	CAA	.20	.22	.24	.27
8	CORR	.17	.20	.22	.26
	CAA	.21	.24	.27	.29
9	CORR	.19	.22	.25	.28
	CAA	.23	.26	.29	.33
10	CORR	.21	.24	.28	.31
	CAA	.25	.28	.30	.35
11	CORR	.23	.26	.30	.33
	CAA	.27	.31	.34	.38

Stair Treads

ALUMINUM/RIVETED



Riveted (R)
Corrugated Aluminum Nosing (CORR)



Riveted (R)
Cast Aluminum Abrasive Nosing (CAA)

MAXIMUM TREAD LENGTHS

Bearing Bar Size	Bearing Bar Spacing			
	1-1/4" (18 space)		3/4" (12 space)	
	Plain	Serrated	Plain	Serrated
1" x 1/8"	2'-0"	1'-6"	2'-3"	1'-8"
1" x 3/16"	2'-2"	1'-7"	2'-6"	2'-1"
1-1/4" x 1/8"	2'-6"	2'-0"	2'-8"	2'-3"
1-1/4" x 3/16"	2'-7"	2'-2"	3'-1"	2'-6"
1-1/2" x 3/16"	3'-2"	2'-7"	3'-10"	3'-1"

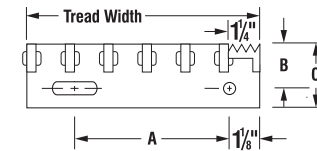
When tread length exceeds 5'-6", design tread for 300 lb concentrated loads at 1/3 points. Maximum tread length based on 300 lb concentrated load on front 5 in of tread at center of tread length and deflection limitation of 1/240 of length. Maximum lengths for serrated apply only if bearing bars are serrated.

END PLATE DIMENSIONS

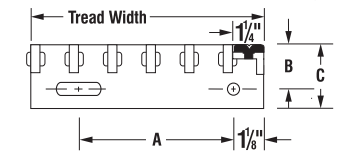
Grating Depth	"B" dimension	"C" dimension
up to 1-1/4"	1-3/4"	2-1/2"
1-1/2" to 1-3/4"	2-1/4"	3"

*See Tread Width and Bolt Hole Spacing for "A" dimension.
*and all aluminum

With Corrugated Aluminum Nosing



With Cast Aluminum Abrasive Nosing



TREAD WIDTH AND BOLT HOLE SPACING

No. of Bearing Bars and Nosing	Bearing Bar		**Bolt Hole Spacing "A"
	1/8"	3/16"	
	Tread Width		
5	6-3/8"	6-11/16"	2-1/2"
6	7-5/8"	8"	4-1/2"
7	8-7/8"	9-5/16"	4-1/2"
8	10-1/8"	10-5/8"	7"
9	11-3/8"	11-15/16"	7"
10	12-5/8"	13-1/4"	7"

**See drawing above.

No. of Bearing Bars and Nosing	Bearing Bar		**Bolt Hole Spacing "A"
	1/8"	3/16"	
	Tread Width		
6	5-3/4"	6-1/8"	2-1/2"
7	6-5/8"	7-1/16"	4-1/2"
8	7-1/2"	8"	4-1/2"
9	8-3/8"	8-15/16"	4-1/2"
10	9-1/4"	9-7/8"	7"
11	10-1/8"	10-13/16"	7"

**See drawing above.

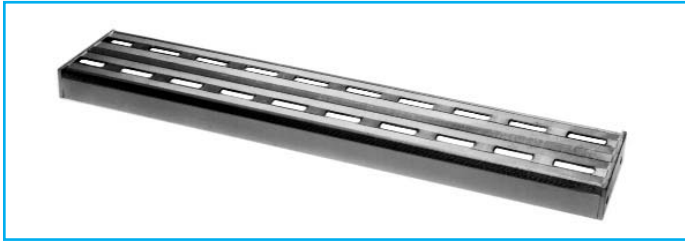
STAIR TREAD WEIGHTS (per lineal inch of tread length)

No. of Bearing Bars	Nosing	Bearing Bar Size				
		1" x 1/8"	1-1/4" x 1/8"	1" x 3/16"	1-1/4" x 3/16"	1-1/2" x 3/16"
5	CORR	.14	.15	.18	.20	.22
	CAA	.18	.18	.22	.23	.26
6	CORR	.17	.18	.21	.24	.26
	CAA	.20	.22	.25	.27	.30
7	CORR	.20	.21	.24	.28	.31
	CAA	.23	.25	.28	.32	.35
8	CORR	.22	.24	.28	.32	.36
	CAA	.26	.28	.32	.35	.39
9	CORR	.25	.27	.32	.36	.40
	CAA	.29	.30	.35	.39	.44
10	CORR	.27	.30	.35	.40	.44
	CAA	.31	.33	.39	.43	.48

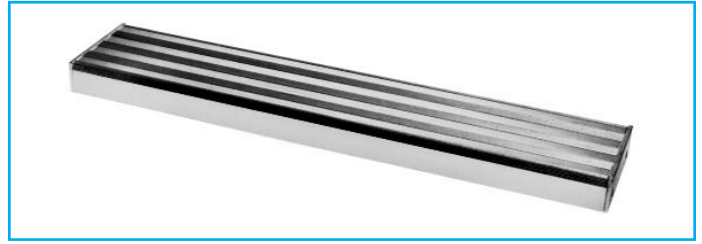
No. of Bearing Bars	Nosing	Bearing Bar Size				
		1" x 1/8"	1-1/4" x 1/8"	1" x 3/16"	1-1/4" x 3/16"	1-1/2" x 3/16"
5	CORR	.17	.18	.20	.23	.25
	CAA	.20	.22	.24	.26	.29
6	CORR	.19	.21	.23	.26	.30
	CAA	.23	.25	.27	.30	.33
7	CORR	.21	.24	.27	.30	.34
	CAA	.25	.27	.30	.34	.37
8	CORR	.24	.27	.30	.34	.38
	CAA	.28	.30	.34	.37	.41
9	CORR	.27	.30	.33	.37	.42
	CAA	.30	.33	.37	.41	.46
10	CORR	.29	.33	.36	.41	.46
	CAA	.33	.36	.40	.45	.50

Stair Treads

ALUMINUM/DUO-GRIP™



Duo-Grip™ (DG) Punched



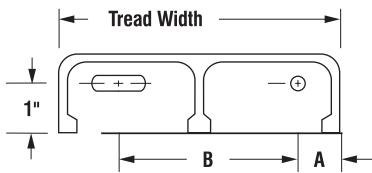
Duo-Grip™ (DG) Unpunched

TREAD APPLICATIONS

Tread Widths	Maximum Tread Length	A	B	Wt. Unpunched
3" x 1-3/4"	4'-3"	3/4"	1-1/4"	.10 plf
4" x 1-3/4"	5'-0"	3/4"	2-1/4"	.15 plf
6" x 1-3/4"	5'-5"	1-1/2"	3"	.18 plf
9" x 1-3/4"	5'-6"	1-1/2"	6"	.26 plf

Maximum tread length based on 300 lb concentrated load on entire tread at center of tread length and deflection limitation of 1/240 of length.

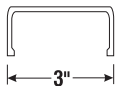

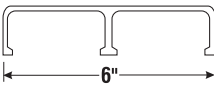
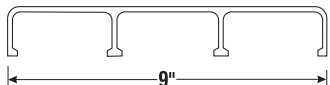
END PLATE DIMENSIONS



LOAD TABLE (plf)

Tread Width	Span (ft)							
	12"	18"	24"	30"	36"	42"	48"	54"
3"	2633	1170	658	421	293	215	165	130
4"	3346	1487	837	535	372	273	209	165
6"	3558	1581	890	569	395	290	222	176
9"	4419	1964	1105	707	491	361	276	218

PHYSICAL PROPERTIES

Section View	Symbol	Size	Weight (extrusion only)	Section Properties	
				Section Modulus (in ³)	Moment of Inertia (in ⁴)
	DG-3175	3" x 1-3/4"	1.195 plf	.3949	.4323
	DG-4175	4" x 1-3/4"	1.696 plf	.5019	.5579
	DG-6175	6" x 1-3/4"	2.041 plf	.5337	.6532
	DG-9175	9" x 1-3/4"	2.892 plf	.6629	.8445