

# Fire-rated Aluminum Curtain Wall System

ALUFLAM® has pioneered the innovative solution to what was long considered an impossible dream (and a barrier to truly beautiful commercial architectural design), the development of rugged, versatile aluminum framing technology for fire-rated commercial curtain wall applications.

The ALUFLAM system has been tested and approved and is available to the architectural and construction communities worldwide.



## Features:

- The clean, sharp lines of narrow stile aluminum framing
- Large, wire-free glass areas
- Barrier to radiant heat through insulated frame and glazing. ASTM E119 compliant
- Increased design freedom
- Tested and approved to national and international fire codes
- Multitude of finish options
- Simple to install
- High impact resistance
- No corrosion
- Energy efficient
- Reduced noise transmission
- Interior and exterior installation
- 60 min. rating

## Framing:

The revolutionary all-aluminum framing system is based on high quality extruded profiles, filled with a proprietary insulating compound.

## Glazing:

Alufam incorporates Vetrotech Saint Gobain clear laminated fire glazing. Glazing conforms to CPSC 16CFR1201 (CAT I & II) standards for impact while providing excellent clarity and sound reduction. The Alufam system is approved with both Swissflam and Contraflam glazing which feature superior heat barrier properties.

## Finishes:

Alufam can offer a number of factory prefinished coatings for its fire-rated aluminum products.

These include:

- Anodizing
- Powder coating
- Architectural paint finishes

## Listings:

These curtain wall assemblies are Classified by Underwriters Laboratories Inc. to ANSI/UL 263. UL File Number U544. ASTM E119 compliant. City of New York approved - MEA 248-08-M

## Documentation:

Go to [www.alufam-usa.com/specs/](http://www.alufam-usa.com/specs/) for:

- CAD drawings
- CSI specifications
- Installation instructions

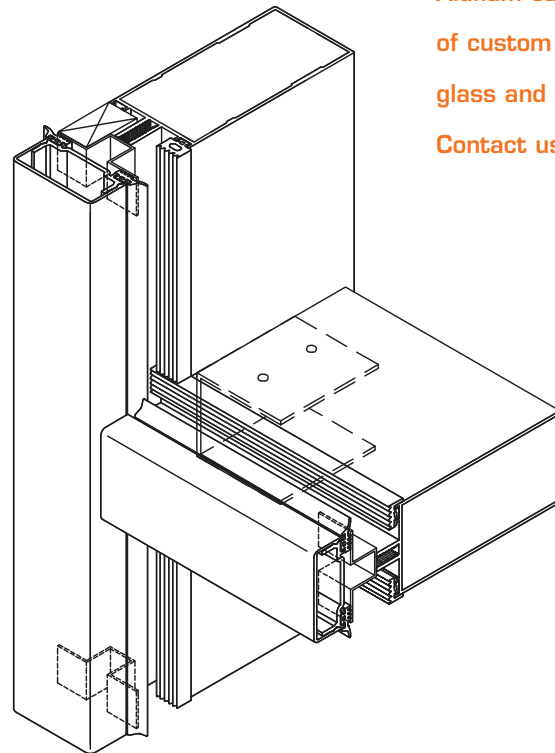
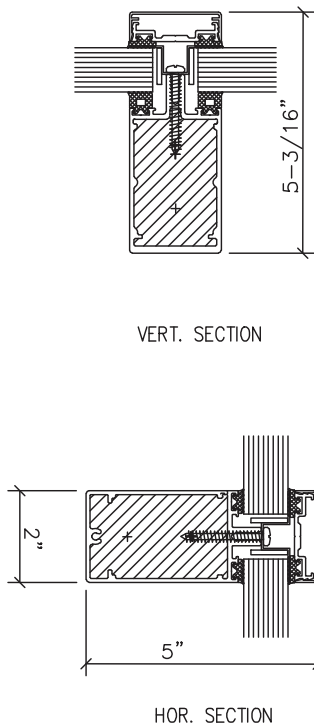
# Fire-rated Aluminum Curtain-wall System

## Description

Series	CW-EI60	CW2-EI60
Fire rating	60 min.	60 min.
Maximum exposed glass area (per lite)	4996 in <sup>2</sup>	4996 in <sup>2</sup>
Maximum exposed width (per lite)	94-1/2 in	94-1/2 in
Maximum exposed height (per lite)	94-1/2 in	94-1/2 in
Frame section	2 x 5-3/16 in	2 x 7-5/8 in
Frame weight	4 lbs/ft.	4.5 lbs/ft.
Fire-rated glass weight	10.6 lbs/ft. <sup>2</sup>	10.6 lbs/ft. <sup>2</sup>

Alufam curtain walls are tested and approved to North American fire standards, and can be integrated with Alufam's fire-rated doors.

## Framing



Looking for custom solutions:  
Alufam can provide a variety  
of custom solutions- both on  
glass and framing.  
Contact us for details!

Note: Depth based on 1" glass thickness for interior installation

See our website for our full range of design options : [www.alufam-usa.com](http://www.alufam-usa.com)

Contact: Alufam North America - A complete list of approved Alufam  
representatives is available online at [www.alufam-usa.com](http://www.alufam-usa.com)

E-mail: [info@alufam-usa.com](mailto:info@alufam-usa.com)

Member  
NGA  
National Glass  
Association

CLASSIFIED  
UL  
US



ALUFLAM NORTH AMERICA  
15551 Industry Lane Huntington Beach, California 92649  
Phone: 714.899.3990 Fax: 714.899.3993 [www.alufam-usa.com](http://www.alufam-usa.com)  
Copyright © 2011 Alufam North America

**alufam**  
architectural fire-rated solutions