

10 71 13 – 10705 EXTERIOR SUN CONTROL DEVICES
10 71 13.13 – 10710 EXTERIOR SHUTTER

ASP BAHAMA SHUTTER AWNINGS

Extruded Aluminum Construction

Fluoropolymer & Powder Coat Finishes

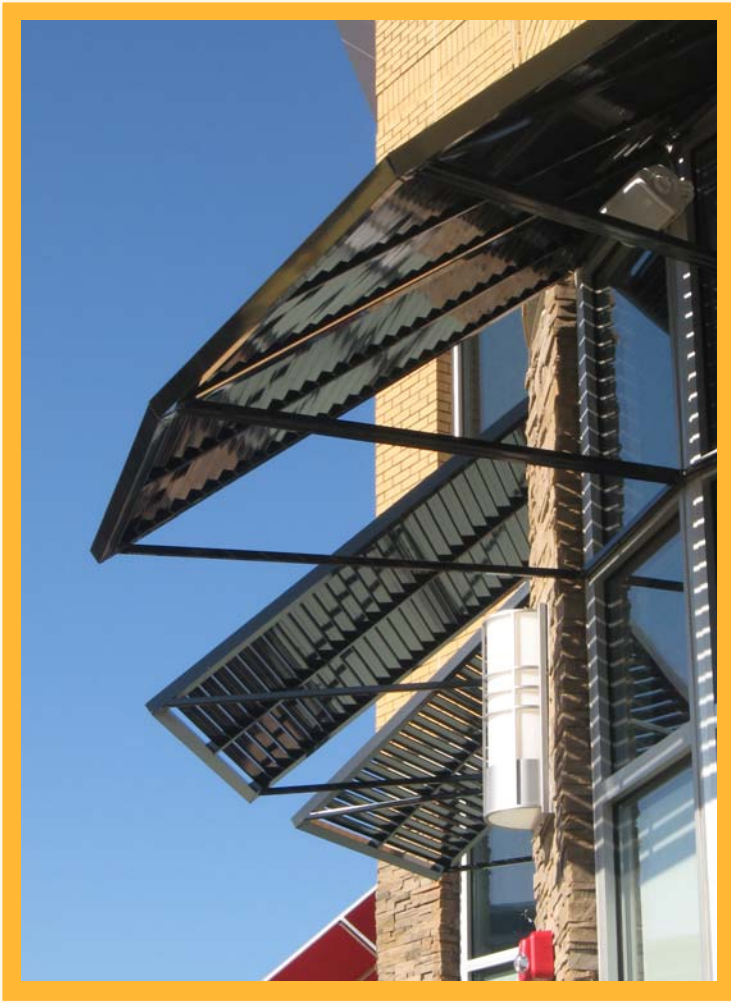
Wide Range of Size & Installation Options



BERKELEY HEIGHTS SHOPPING CENTER — ATLANTA, GA

ARCHITECTURAL
SHADE
PRODUCTS

AWNINGS, CANOPIES AND
SUN CONTROL DEVICES
SINCE 1988



LET ASP BAHAMA SHUTTER AWNINGS ADD STYLE AS WELL AS WEATHER AND SUN PROTECTION TO YOUR RETAIL, MIXED USE, OFFICE, CONDOMINIUM, OR OTHER COMMERCIAL PROJECT. SUNLIGHT FILTERS THROUGH THE LOUVER OPENINGS PROVIDING A SIZABLE REDUCTION IN A/C ENERGY USE AND A CHARMING ELEGANCE REMINISCENT OF THEIR NAMESAKE ISLANDS.

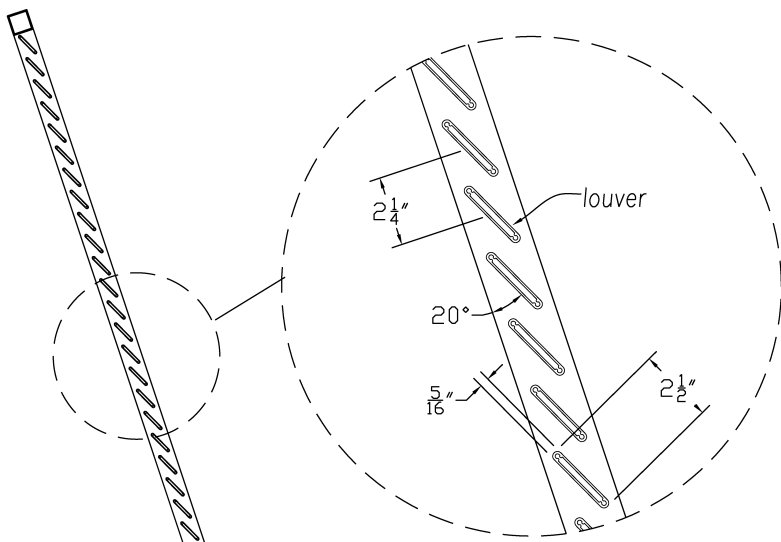
ASP BAHAMA SHUTTER AWNINGS CREATE A CASUAL YET UPSCALE LOOK THAT ADDS VISUAL INTEREST AND FUNCTIONAL SUN CONTROL TO ALMOST ANY TYPE OF BUILDING.

WHAT'S MORE, THEY'RE EXTREMELY DURABLE, DELIVERING YEARS OF LOW MAINTENANCE BEAUTY.

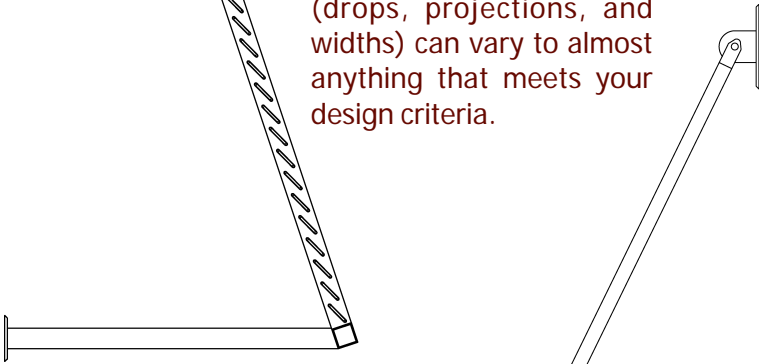
AND, THEY'LL ARRIVE AT YOUR JOB SITE FABRICATED AND PREFINISHED FOR QUICK INSTALLATION.

TOWNPARK VILLAGE — KENNESAW, GA

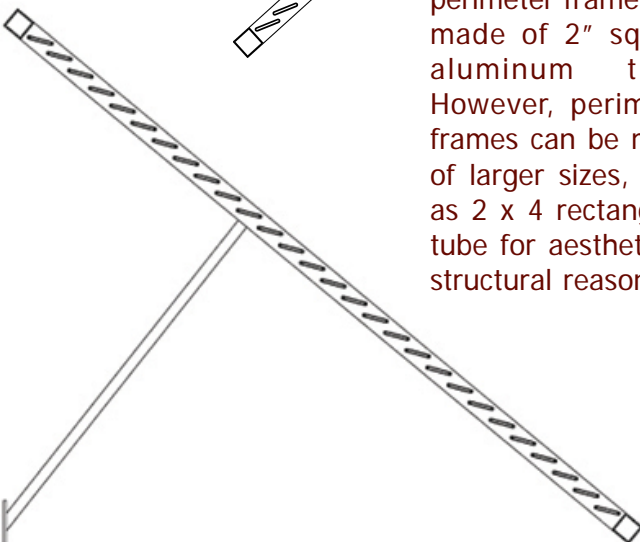




Overall shutter dimensions (drops, projections, and widths) can vary to almost anything that meets your design criteria.



As these drawings illustrate, shutter support arms can be located above or below the shutter and can be made using a variety of materials, although most are 1" square aluminum tube.



Standard shutter perimeter frames are made of 2" square aluminum tube. However, perimeter frames can be made of larger sizes, such as 2 x 4 rectangular tube for aesthetic or structural reasons.

STANDARD COLOR PALLET

Please contact Architectural Shade Products for additional powder coat as well as fluoropolymer (Kynar®, NEWLAR™, SHER-NAR®) colors. Note, nonstandard colors may require additional cost.



SIERRA TAN PSP4211W



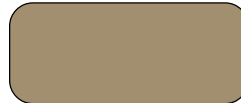
SANDSTONE PSP4210W



COLONIAL RED PSP4416K



ANODIZED SILVER 91020



CHAMPAGNE PSPY3867Y



REGAL BROWN PS4212W



PATINA GREEN 9SP4545J



COAL BLACK PSP3960D



FOREST GREEN PSP4543J



DARK BRONZE PSPY3870Y



HARTFORD GREEN PSP4542J



BURGUNDY PSP4415K

Colors shown are representations. Request actual powder coat samples for precise color.



OHANA WAIKIKI BEACHCOMBER HOTEL, HONOLULU, HI

10 71 13 - 10705 EXTERIOR SUN CONTROL DEVICES
10 71 13.13 - 10710 EXTERIOR SHUTTERS

1.0 GENERAL

1.01 DESCRIPTION

- A. This section includes Bahama Shutter style sun control awnings.

1.02 STANDARDS

- A. All work and materials shall conform to the following standards.
1. ASTM
 2. American Welding Society
 3. National Fire Protection Agency
 4. Society of Protective Coatings

1.03 SUBMITTALS: Drawings - Provide four (4) complete sets of the following:

- A. Shop Drawings
1. Drawings showing all frame dimensions
 2. Awning locations
 3. Cross sections showing louver sizes, angles and spacing
 4. Connection Details
 5. Product Information
- B. Materials - Frame
1. Provide 8" piece of louver material
 2. Weld Samples
- C. Frame Finish
1. Manufacturer's color chart of specified color(s)

1.04 WARRANTY

- A. Awning System
1. Aluminum frame and powder coat finish shall be warranted for five (5) years.
 2. Awning installation shall be warranted for one (1) year.

2.0 PRODUCTS

2.01 MANUFACTURERS

- A. Acceptable Manufacturer: Architectural Shade Products, 2575-C Cobb International Blvd., Kennesaw, GA 30152; p: (770) 590-1230, f: (770) 590-8078

2.02 MATERIALS

- A. Frame Structure
1. To be of 6063-T6 aluminum extrusions
 2. Louvers shall be extruded 2.5" wide, oval shape, .310" thick, with .062" sidewall. Perimeter frame members to be 2" square tube unless otherwise indicated in project documents. Center mullions to be 1-1/2" x 2" I-Beam unless otherwise noted in project documents. Aluminum framing profiles shall be sized to withstand all live, dead and superimposed loads.
 3. The frame design shall meet regional code restrictions. Fasteners shall be noncorrosive, nonstaining bolts, shims and accessory items.

2.03 FRAME FINISH: Powder Coat Finish

- A. General
1. All aluminum frame surfaces shall be powder coated to comply with NAAMM's "Metal Finishes Manual for Architectural and Metal Products".
- B. Pre-Assembly
1. Before powder coating, awning frames shall be fully assembled, with welded joints, to the largest size(s) that can be accommodated by the powder coater.
- C. Coating performance
1. When tested in compliance with ASTM D 3363, coating shall withstand a minimum gauge hardness of 2H.
 2. When tested in compliance with ASTM D 2794, pass up to 80 lbs.
 3. Coated frame shall have a minimum salt spray resistance of 500 hours, using ASTM B117, without loss of paint adhesion.

3.0 EXECUTION

3.01 FRAME

- A. All perimeter, mullion and support frame members to be joined by welding in compliance with ASW standards.
- B. Welds to be 1/4" fillet welds, welded with 4043 aluminum welding rod.
- C. Each joint to be welded on at least three (3) sides.
- D. All members to be cut so as to form tight joints with no gaps.
- E. Remove all burrs from cut edges.
- F. Louvers to be securely held in place, inserted into slots cut in vertical perimeter frame members and mullions. Slots to be sized with precision as required to prevent rattling of louvers.

3.02 INSTALLATION

- A. Awning(s) to be installed in position(s) indicated by shop drawings, securely connected to supports.
- B. Number and size of fasteners shall be sufficient to meet required loads.
- C. Installation shall be structurally sound, level, plumb and leak free.



ARCHITECTURAL SHADE PRODUCTS manufactures and installs awnings, canopies, and sun control devices that offer protection from the elements as well as visual enhancement for your building.

ARCHITECTURAL SHADE PRODUCTS works with a variety of materials, including aluminum and steel, canvas and vinyl fabrics, standing seam and polycarbonate roofing.

We also offer a variety of metal finishes, including powder coating and anodizing.

Contact us today and allow us help you with the right **ARCHITECTURAL SHADE PRODUCTS** for your project.

Since 1988!

