

ASP EXTRUDED ALUMINUM CANOPY SYSTEM



a high quality, prefabricated,
customizable canopy at an
affordable price

ARCHITECTURAL
SHADE
PRODUCTS



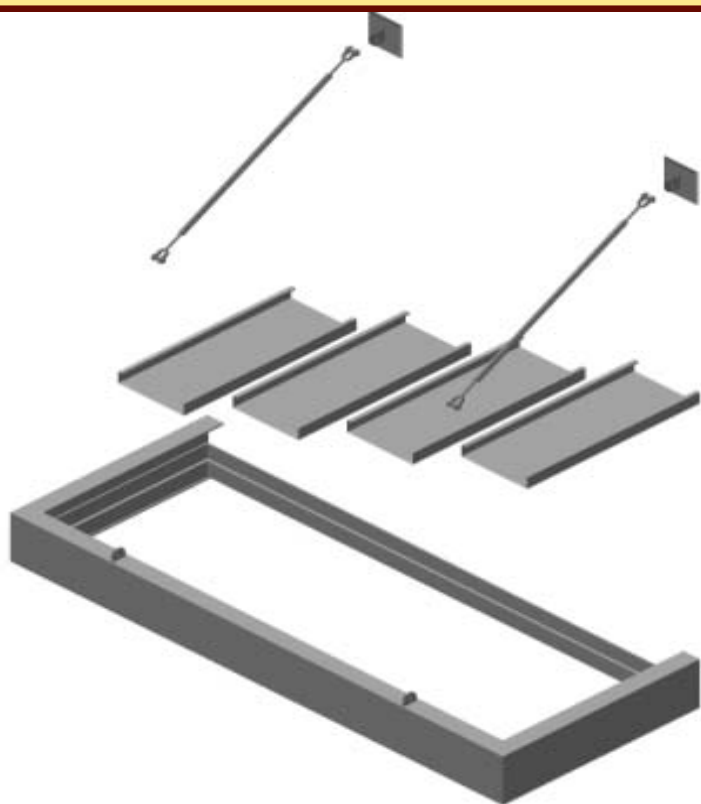
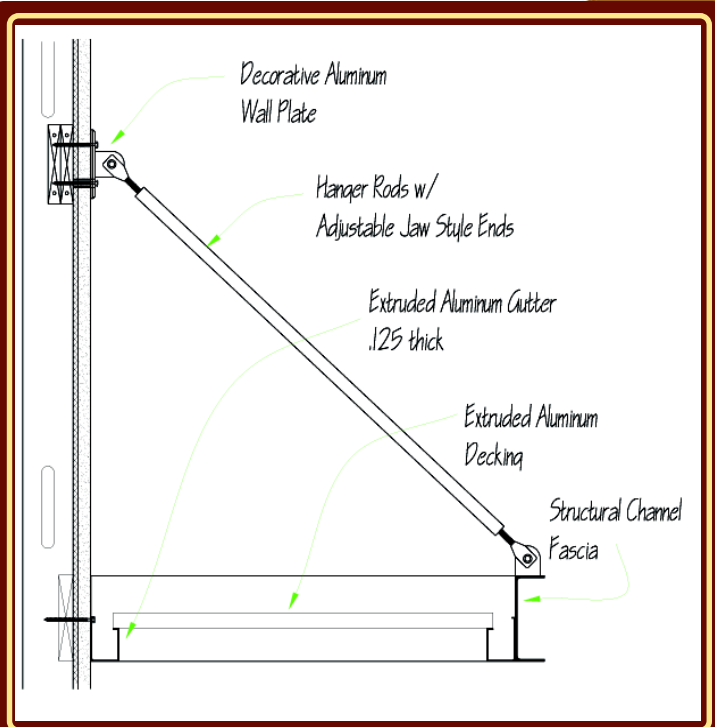
The *ASP Extruded Aluminum Canopy System* has been engineered to maximize efficiency of production, thus providing an excellent value while still allowing a wide range of attractive design options. We combine structural channels, tubes and angles to fabricate virtually any fascia design. Canopies feature integrated gutters with your choice of downspouts or scuppers. Canopies can be cantilevered from building walls or





Also available
with translucent
vinyl fabric featuring
10-yr warranty!

supported by adjustable hanger rods. Hanger rod mounting plates come in a variety of standard precision machined designs, or can be engineered to your own custom specification. Finish choices include TGIC Polyester powder coating, anodizing and fluoropolymer coatings with warranties up to 20 yrs.



Prefabricated Components Help Shorten Your Construction Schedule

- **Canopy Body:** Complete Welded Assembly, Including Fascia and Integrated Perimeter Gutter with Scuppers or Downspouts
- **Pre-cut Aluminum Decking Panels**
- **Support Rods:** With Jaw Style Adjustable End and Pins for Connection to Wall Plates and Canopy Body
- **Wall Plates:** Pre-Drilled for Wall Fasteners and Clevis Pins



ASP Extruded Aluminum Canopies are substantial and built to last. They are made of 6063-T6 aluminum (hanger rods are available in both steel and aluminum). They are decked with our .078 inch thick interlocking pans which appear flush when viewed from beneath. Fascia material choices include structural channel up to 12" tall.





- THE LOOK OF STRUCTURAL STEEL, WITHOUT THE RUST
- HIGH LEVEL OF FINISH UNACHIEVABLE WITH FIELD APPLIED PAINT
- PREFABRICATED IN MAJOR COMPONENTS FOR QUICK INSTALLATION



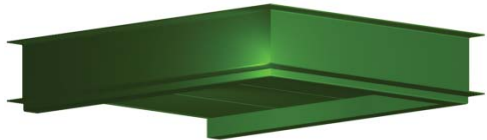
Multiple Fascia Options:

Shown are just a small sample of the fascia design possibilities. Please feel free to contact us if you'd like assistance in designing a fascia style not shown.

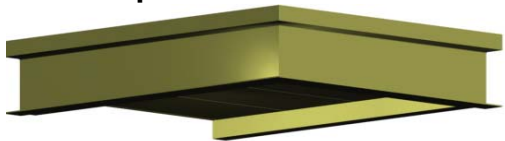
Fascia Channel Facing Out



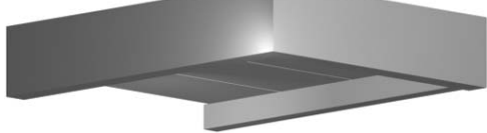
Fascia Channel Facing Out with Bottom Trim



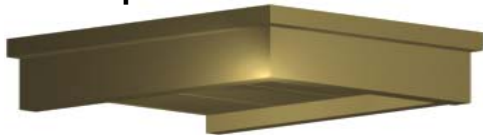
Fascia Channel Facing Out with Top Trim



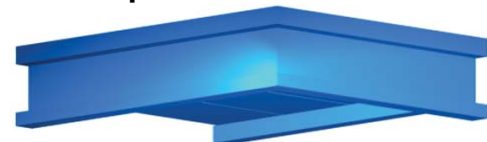
Smooth Fascia Surface Channel Facing In



Fascia Channel Facing In with Top Trim

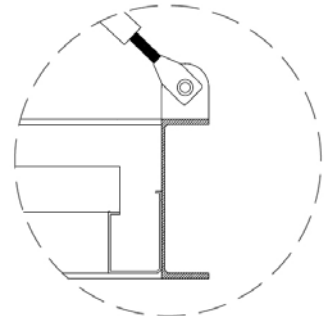
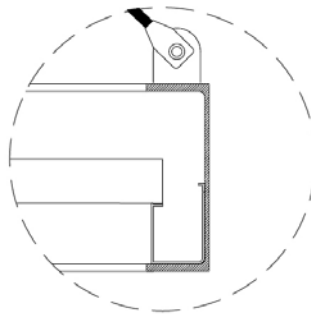


Fascia Channel Facing In with Top and Bottom Trim



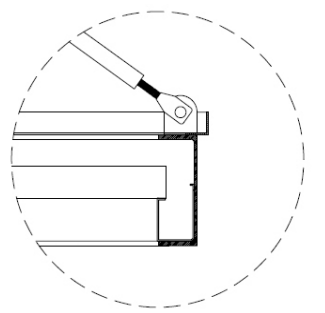
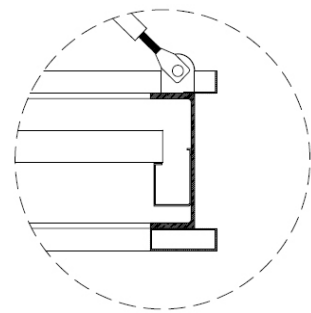
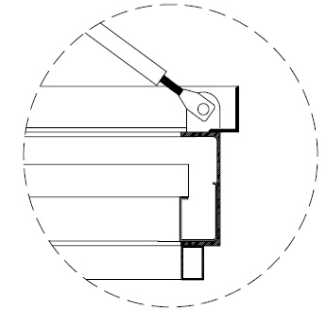
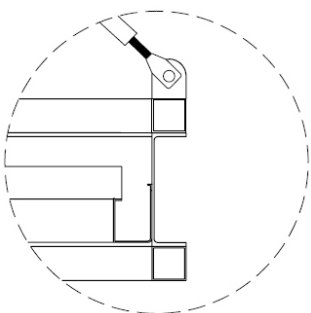
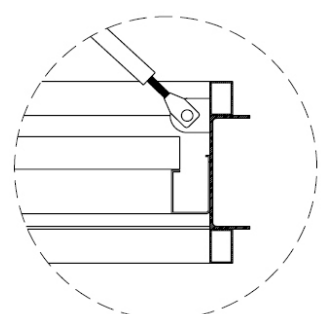
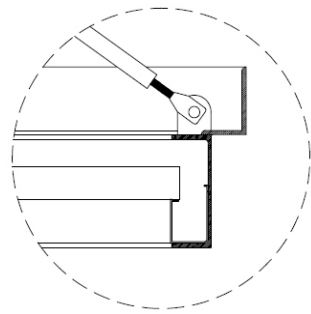
Choose Channel In or Out ...

- 6-inch face • 8-inch face • 10-inch face • 12-inch face • Custom sizes



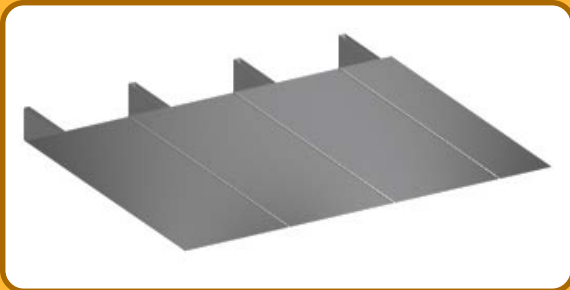
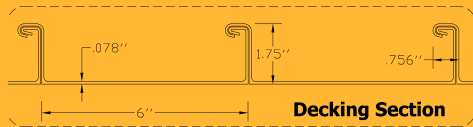
... or a Custom Fascia Style

- Combine our structural channel with various angles and tube shapes to create your own unique fascia profile in almost any configuration

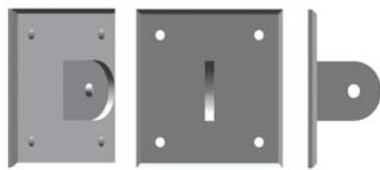


Extruded Aluminum Decking

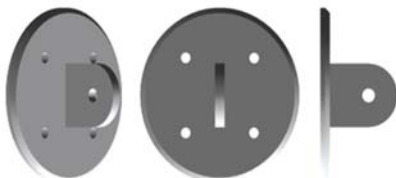
engineered to span up to 10'



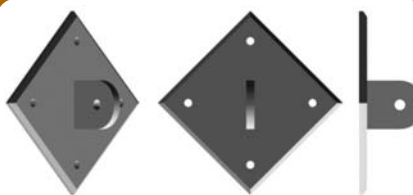
Attractive and Strong Wall Brackets



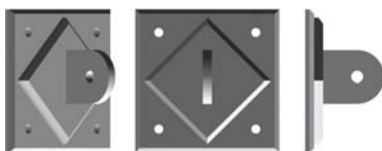
Square Bracket



Circular Bracket



Diamond Bracket



Diamond in Square

Shown are standard hanger rod support brackets machined from 1/2" thick aluminum. Don't see the exact look you had in mind? Contact ASP for a custom designed solution.

STANDARD COLOR PALLET

Please contact Architectural Shade Products for additional powder coat as well as fluoropolymer (Kynar®, NEWLAR™, SHER-NAR®) colors. Note, nonstandard colors may require additional cost.



SIERRA TAN PSP421IW



SANDSTONE PSP4210W



COLONIAL RED PSP4416K



ANODIZED SILVER 91020



CHAMPAGNE PSY3867Y



REGAL BROWN PS4212W



PATINA GREEN 9SP4545J



COAL BLACK PSP3960D



FOREST GREEN PSP4543J



DARK BRONZE PSY3870Y



HARTFORD GREEN PSP4542J



BURGUNDY PSP4415K

Colors shown are representations. Request actual powder coat samples for precise color.



1.0 GENERAL**1.01 DESCRIPTION OF WORK**

- A. Work in this section includes fabrication and installation of *ASP Extruded Aluminum Canopies* as manufactured by Architectural Shade Products, Kennesaw, GA.
- B. Related Items and Considerations
 - 1. Plan for proper attachment to wall construction including fastener type, size and locations. Coordinate for blocking or additional interior wall structure as required to support canopy loads.
 - 2. Provide for water drainage through scuppers or downspouts per project drawings.

1.02 STANDARDS

- A. Products meeting these specifications and established standard of quality as required by Architectural Shade Products, Kennesaw, GA.
- B. All work and materials shall conform to the following standards:
 - 1. ASTM
 - 2. American Welding Society
 - 3. National Fire Protection Agency
 - 4. National Association of Architectural Metal Manufacturers
- C. Performance requirements
 - 1. Canopy must conform to local building codes.
- D. Determine if specific load requirements have been established for canopies and if stamped calculations are required for location in which canopy is installed.
- E. Installer Qualifications: Must have at least 3 years experience in installation of canopies of type and installation method similar to work in this section.

1.03 SUBMITTALS

- A. Shop Drawings
 - 1. Drawings showing all frame dimensions
 - 2. Canopy locations
 - 3. Connection Details
 - 4. Product Information
- C. Frame Finish
 - 1. Manufacturer's color chart of specified color(s)

1.04 WARRANTY (following warranty is based on standard powder coat finish)

- A. Canopy
 - 1. Manufacturer shall warrant all manufacturer supplied components against defects in labor and materials for a period of one year commencing on the date of substantial completion.
- B. Installation
 - 2. Installer shall warrant entire scope of installation including connection of canopies to building, caulking or flashing of canopies and installation of decking panels, against defects in all labor and materials for a period of one year commencing on the date of substantial completion.

2.0 PRODUCTS**2.01 MANUFACTURERS**

- A. Acceptable Manufacturer: Architectural Shade Products, 2575-C Cobb International Blvd., Kennesaw, GA 30152; toll free (877) 723-2272, local (770) 590-1230, fax: (770) 590-8078, email rfi@architecturalshade.com

2.02 MATERIALS

- A. Decking shall be interlocking, self supporting (up to connection to gutters), 6" wide pans, flat on underside with 1-3/4" tall ribs; shall be 6063-T6 extruded aluminum; shall be leak free; shall attach to gutters as to direct water into gutter from each end.
- B. Fascia to be 6063-T6 extruded aluminum structural channel and trims to match profiles indicated in project drawings.
- B. Gutters to be 6063-T6 extruded aluminum minimum 4" x 3-1/2" with minimum sidewall thickness of 1/8". Gutters to form self-contained "loop" spanning back, sides and fronts of canopies.
- C. Hanger rods to be galvanized steel tube sized as required by applicable building codes or project documents, whichever is greater. Hanger rods to have adjustable jaw style galvanized steel ends.
- D. Fasteners shall be noncorrosive, nonstaining bolts, shims and accessory items.

2.03 FRAME FINISH: Powder Coat Finish (following finish specification is based on standard powder coat finish)

- A. General
 - 1. Canopies to be powder coated to comply with NAAMM's "Metal Finishes Manual for Architectural and Metal Products".
- B. Pre-Assembly
 - 1. Before powder coating, canopy fascia/gutter assemblies shall be fully assembled, with welded joints.
- C. Coating performance
 - 1. When tested in compliance with ASTM D 3363, coating shall withstand a min. gauge hardness of 2H.
 - 2. When tested in compliance with ASTM D 2794, pass up to 80 lbs.
 - 3. Coated frame shall have a minimum salt spray resistance of 2000 hours, using ASTM B117, without loss of paint adhesion.

2.04 FABRICATION

- A. Aluminum Components
 - 1. To be joined by welding in compliance with ASW standards. All members to be cut so as to form tight joints with no gaps.
 - 2. Use clean, straight, smooth material that complies with approved plans and shop drawings.
- B. Hanger Hardware
 - 1. Wall plates to be precision machined with bevelled edges and radiused clevis plate as per approved drawings and manufacturer's product literature.
 - 2. Hanger rods to be prefabricated assemblies straight and true, welded in compliance with ASW standards.
- C. Decking
 - 1. Decking panels to be prefinished, cut to length and width and marked for assembly.

3.0 EXECUTION**3.01 INSPECTION**

- A. Installer shall confirm dimensions prior to fabrication.
- B. Confirm surrounding area is ready for canopy installation.

3.02 INSTALLATION

- A. Install canopies in positions indicated in manufacturer's shop drawings.
- B. Installation shall be structurally sound, level, plumb and leak free.
- C. Installer to protect finish during handling, erection and complete installation.



ARCHITECTURAL SHADE PRODUCTS manufactures and installs awnings, canopies, and sun control devices that offer protection from the elements as well as visual enhancement for your building.

ARCHITECTURAL SHADE PRODUCTS works with a variety of materials, including aluminum and steel, canvas and vinyl fabrics, standing seam and polycarbonate roofing.

We also offer a variety of metal finishes, including powder coating and anodizing.

Contact us today and let us help you with the right **ARCHITECTURAL SHADE PRODUCTS** for your project.

Since 1988!

